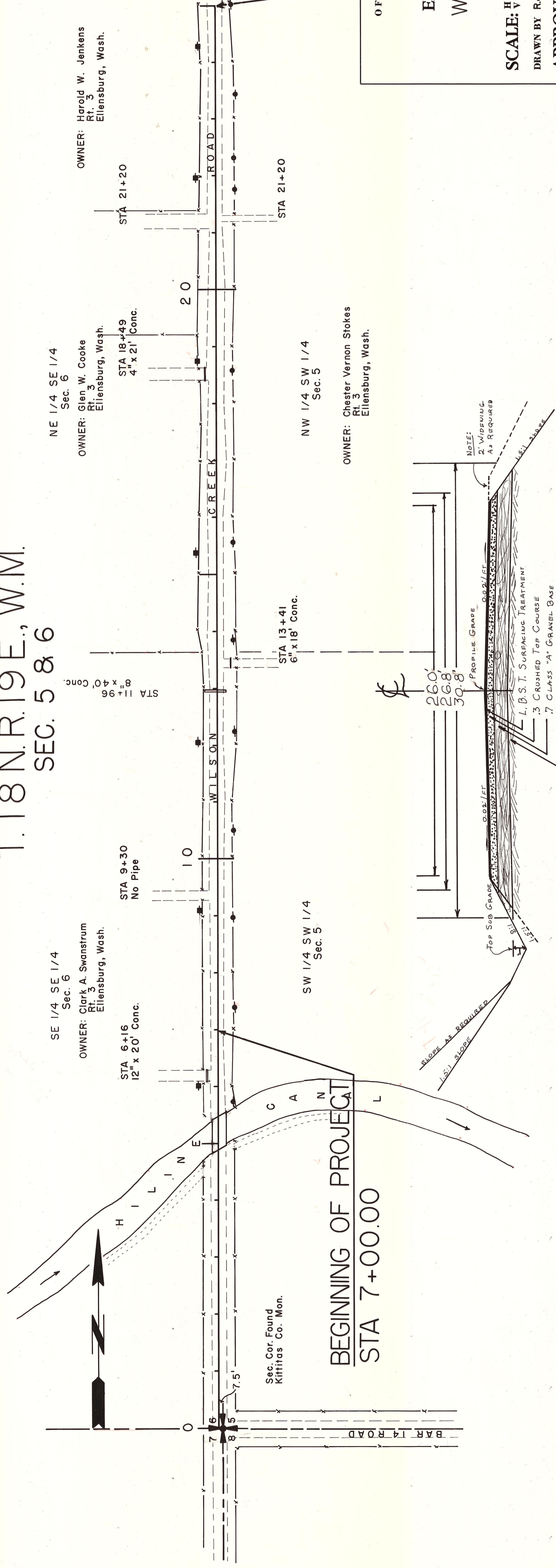


# T. 18 N. R. 19 E., W.M. SEC. 5 & 6



OFFICE OF COUNTY ROAD ENGINEER  
**KITTITAS COUNTY**  
ELLENSBURG, WASHINGTON  
WILSON CREEK ROAD  
(SPOT IMPROVEMENT)

**SCALE: 1" = 100'**  
**CRP**  
Length .34 Mile  
(SPOT IMPROVEMENT)

**DRAWN BY R.J.R. DATE Sept. 1977**

**APPROVED: 9/29/77**  
DATE

**R. E. BLOSSOM**  
COUNTY ROAD ENGINEER

SHEET 1 OF 1

DATE	REVISIONS	BY
10/1/77	GRADE REVISION	RJR

