

4
T-2-51

KITTITAS COUNTY,
WASHINGTON.

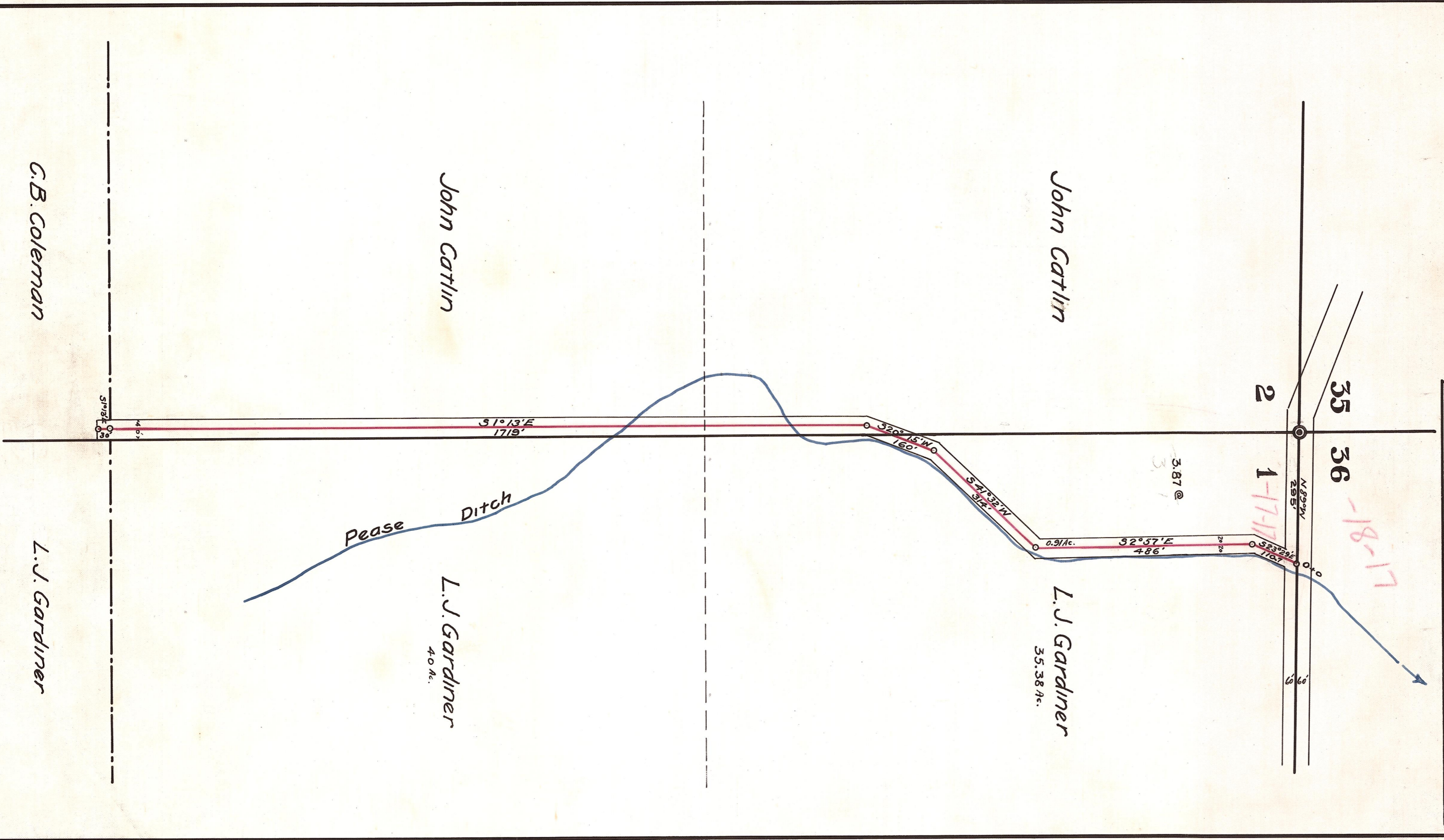
MAP OF C.B. COLEMAN ROAD NO. 156
IN TOWNSHIP 17N., RANGE 17E. WM.
ELLENSBURG, WASH. SEPT. 21, 1914.
Scale: 1 in. = 200 ft.

Correct:

County Engineer

M.

CATLIN RD. 15-11



15-11-15
7-8-2-19-1