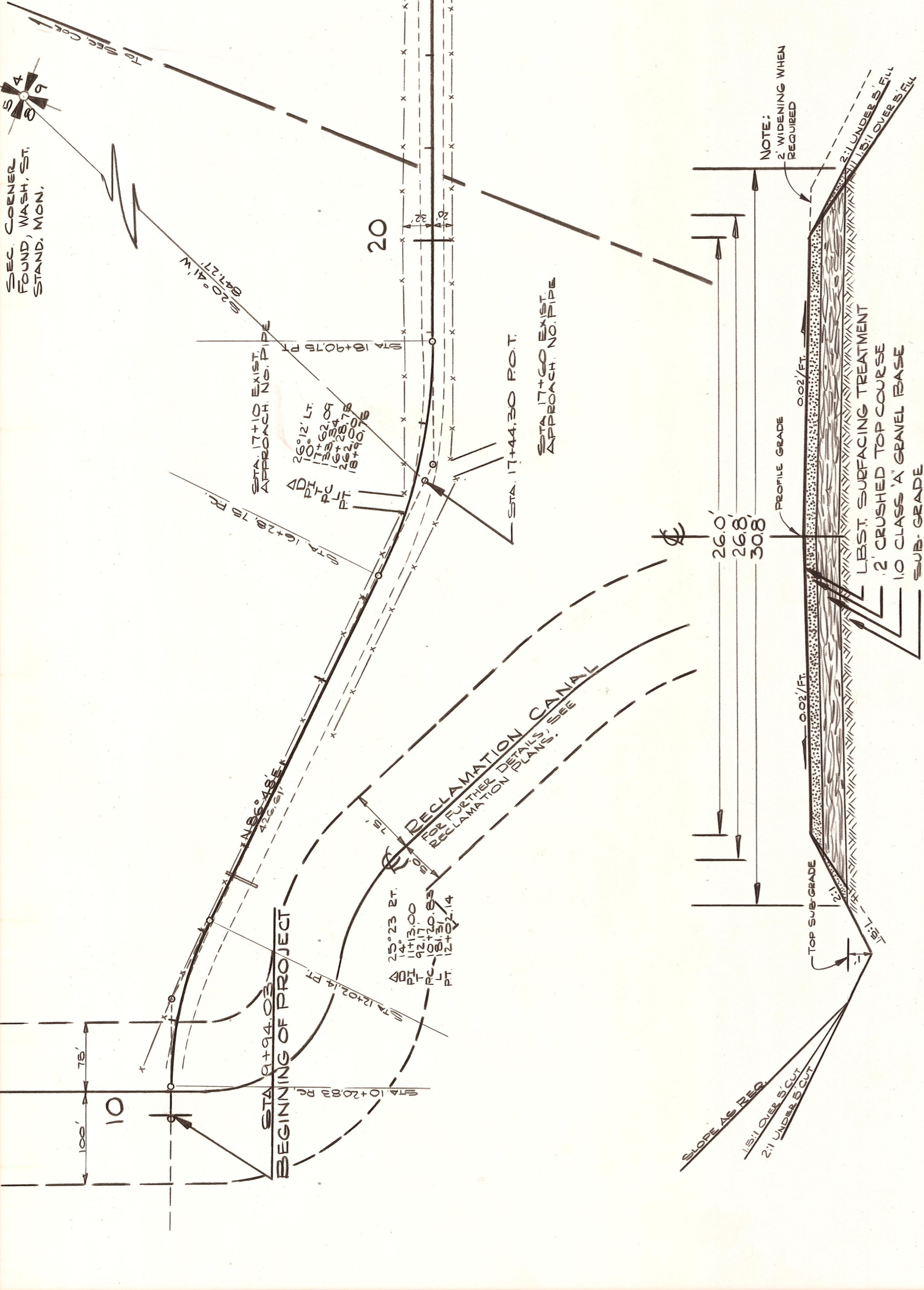


T.18 NR.17E. WM.

NW 1/4 NW 1/4 Sec. 9

NW 1/4 NW 1/4 Sec. 9



OFFICE OF COUNTY ROAD ENGINEER
KITTITAS COUNTY
 ELLENSBURG, WASHINGTON
WATT CANYON ROAD
 LENGTH: 1.02 MILE

SCALE: H 1"=100'
 V 1"=10'

DRAWN BY *SAV* DATE Nov 1972
 APPROVED: *12-26-72* DATE _____

PROJECT NO. _____ SHEET 1 OF 2



ROADWAY SECTION
 SCALE 1"=4'

