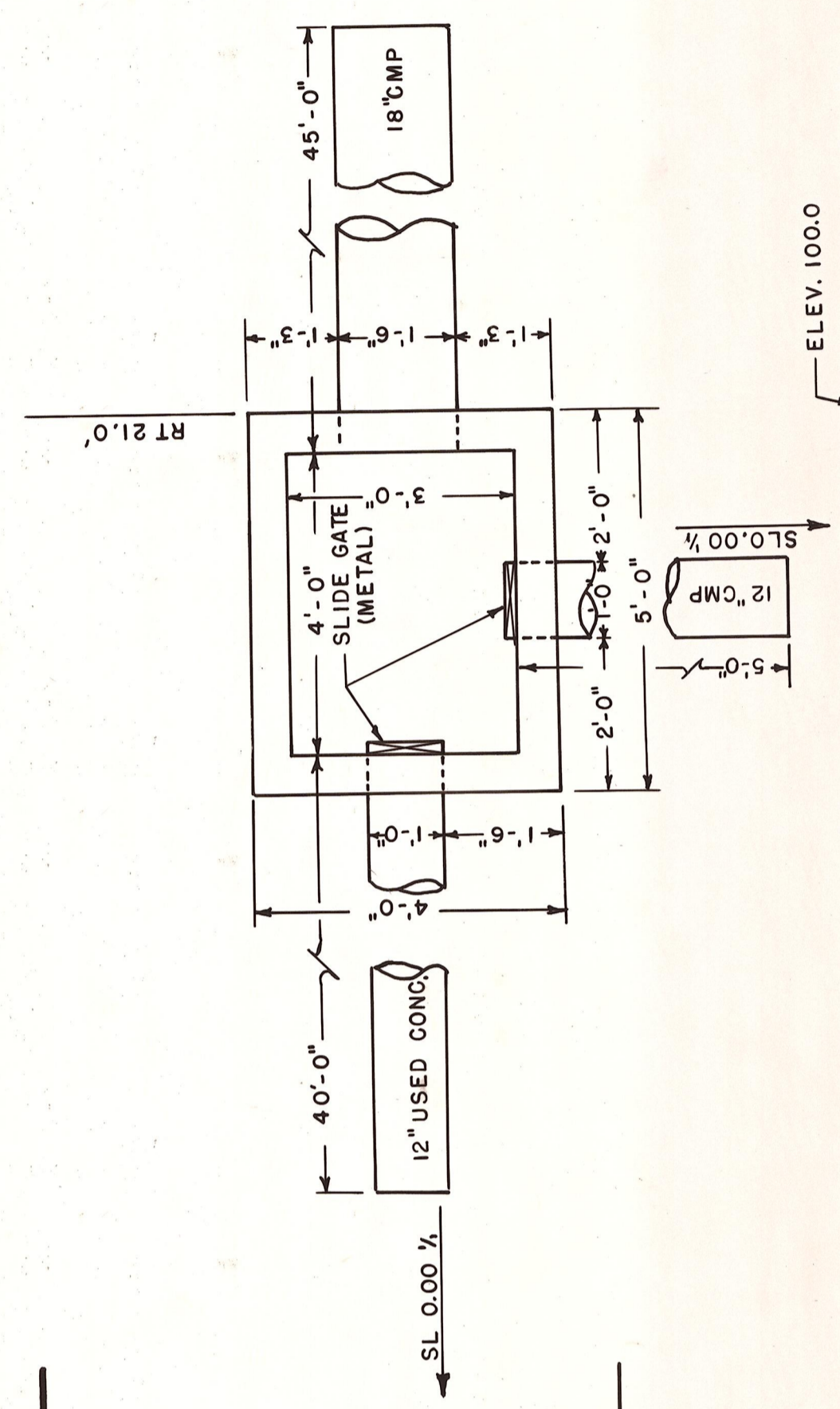
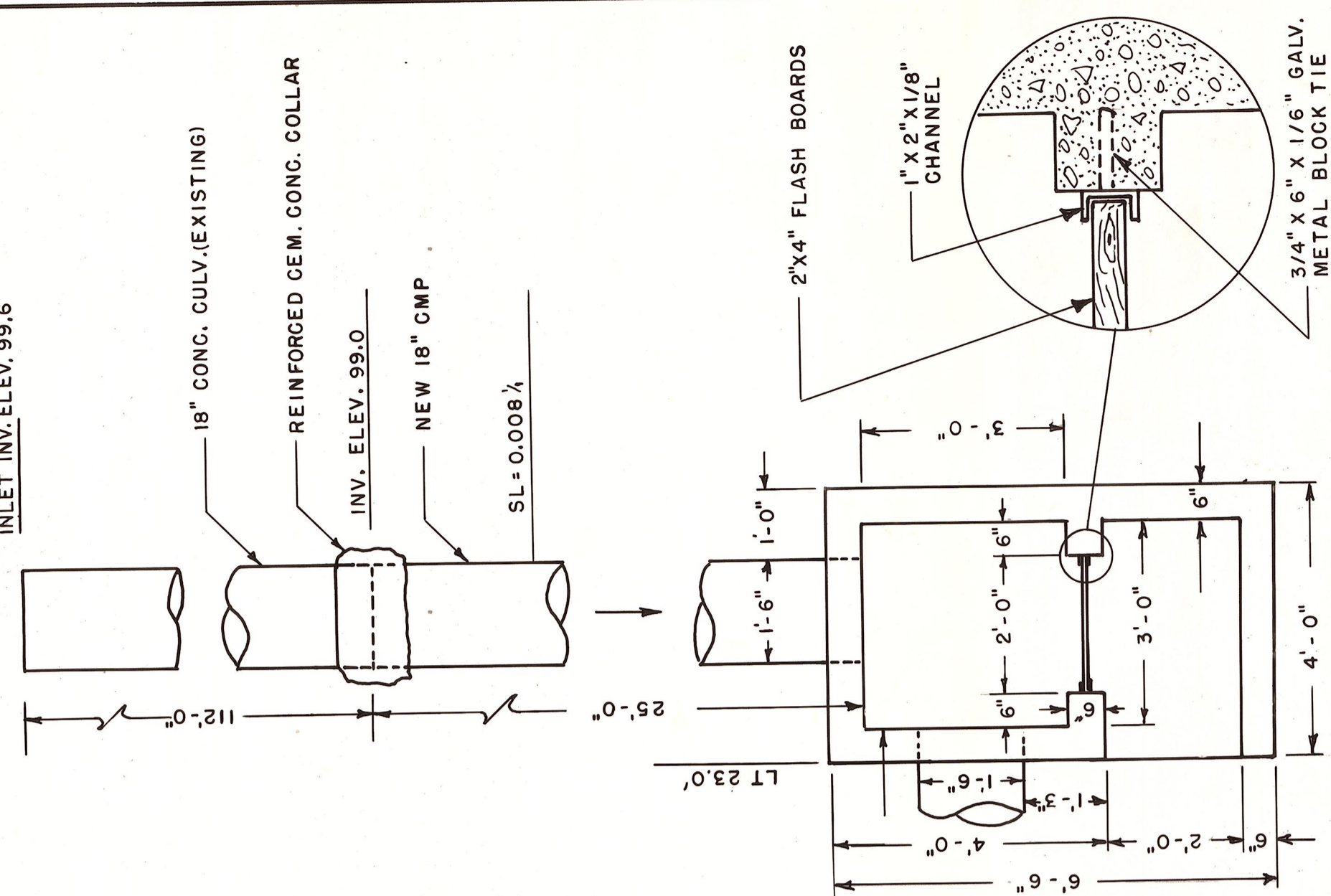
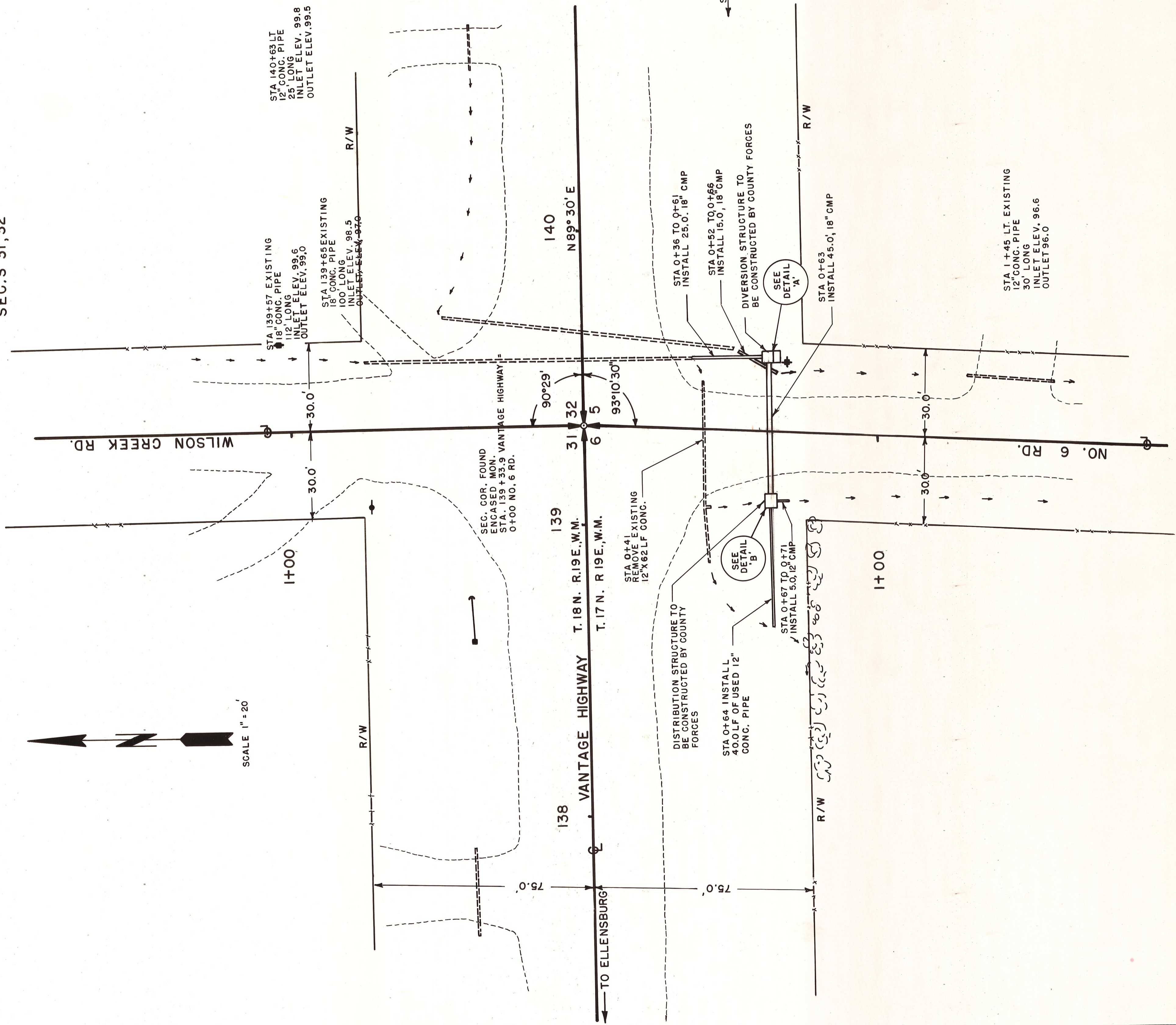
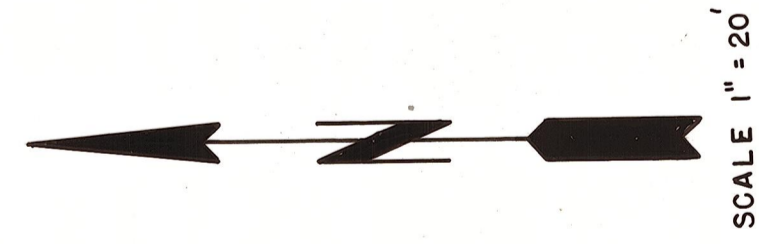
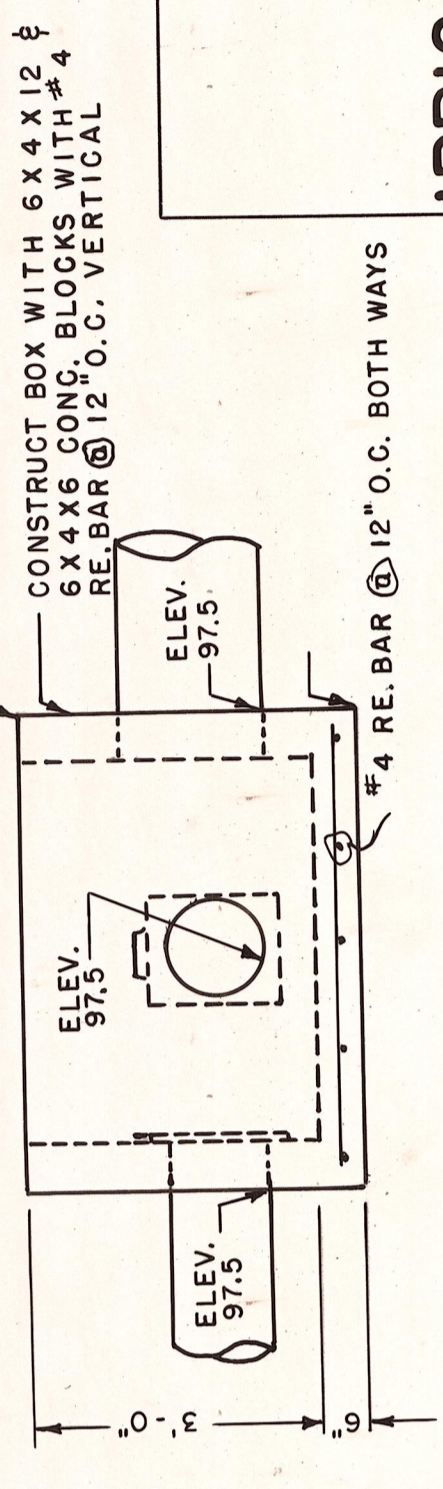


T.18 N. R.19E., W.M.
SEC'S 31, 32



DETAIL 'A'
DIVERSION STRUCTURE



DETAIL 'B'
DISTRIBUTION STRUCTURE

KITTITAS COUNTY DEPARTMENT OF PUBLIC WORKS
KITTITAS COUNTY
ELLENSBURG, WASHINGTON
IRRIGATION STRUCTURE REVISION
 VANTAGE HWY. @ #6 &
 WILSON CREEK RD.

SCALE: H AS SHOWN CRP
 DRAWN BY DML DATE 4-8-83 SHEET 1 OF 1
 APPROVED: *[Signature]* DATE 4/12/83 DIRECTOR OF PUBLIC WORKS

DATE	REVISION	BY

