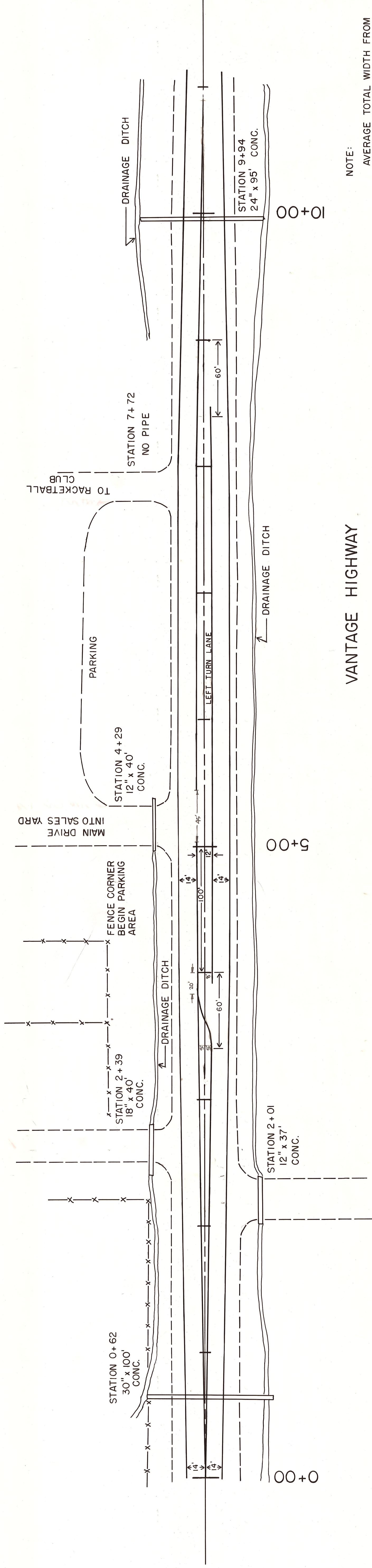




SCALE 1" = 40'



VANTAGE HIGHWAY

DEPT. OF PUBLIC WORKS

KITTITAS COUNTY
ELLENSBURG, WASHINGTON

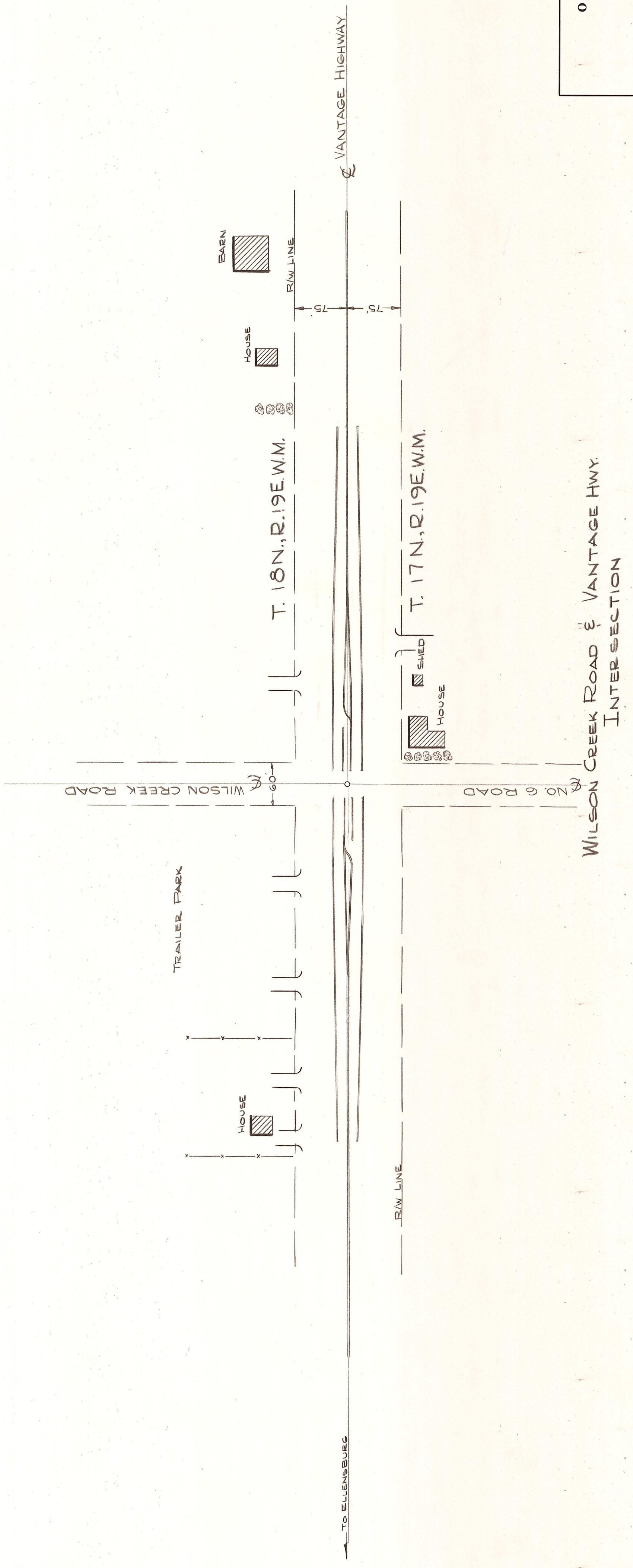
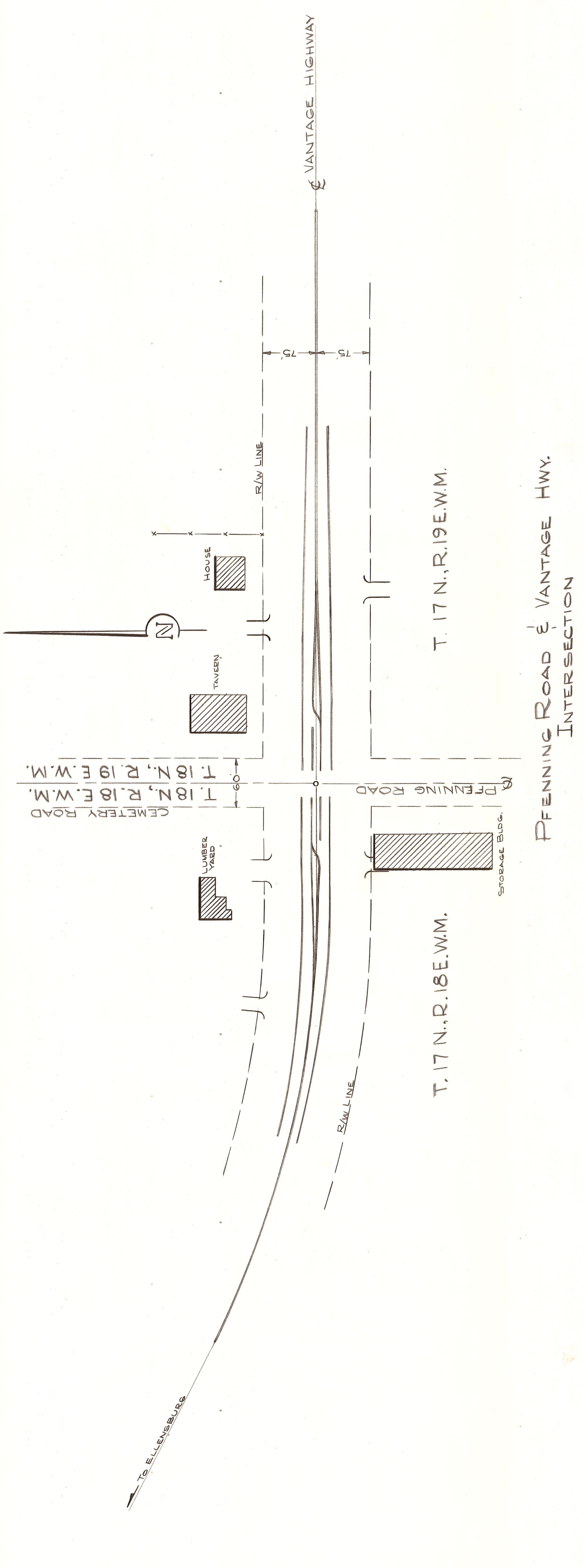
STACKING LANE
VANTAGE HIGHWAY

SCALE: $\frac{H}{V} = \frac{1}{40}$ CRP

DRAWN BY DLT DATE MAY 14, 1981 SHEET 1 OF 1

APPROVED: _____

DATE _____ DIRECTOR OF PUBLIC WORKS

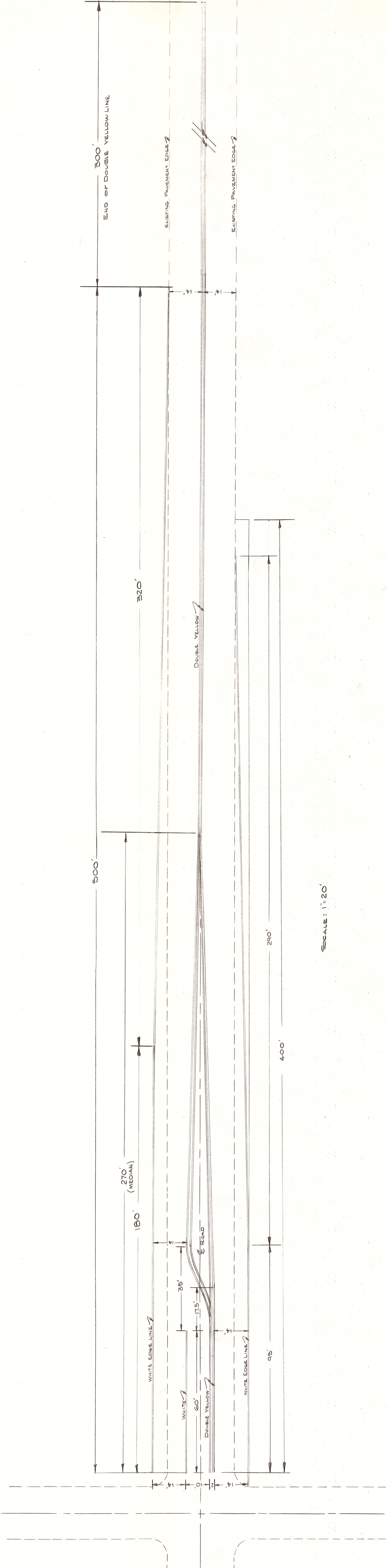


NOTE: SEE DETAIL SHEET 2 FOR DIMENSIONS AND STRIPING DETAILS

OFFICE OF COUNTY ROAD ENGINEER
KITTITAS COUNTY
 ELLENSBURG, WASHINGTON
 VANTAGE HIGHWAY
 STACK-UP LANES
 PFENNING RD. & WILSON CR. RD. CONTINUATIONS

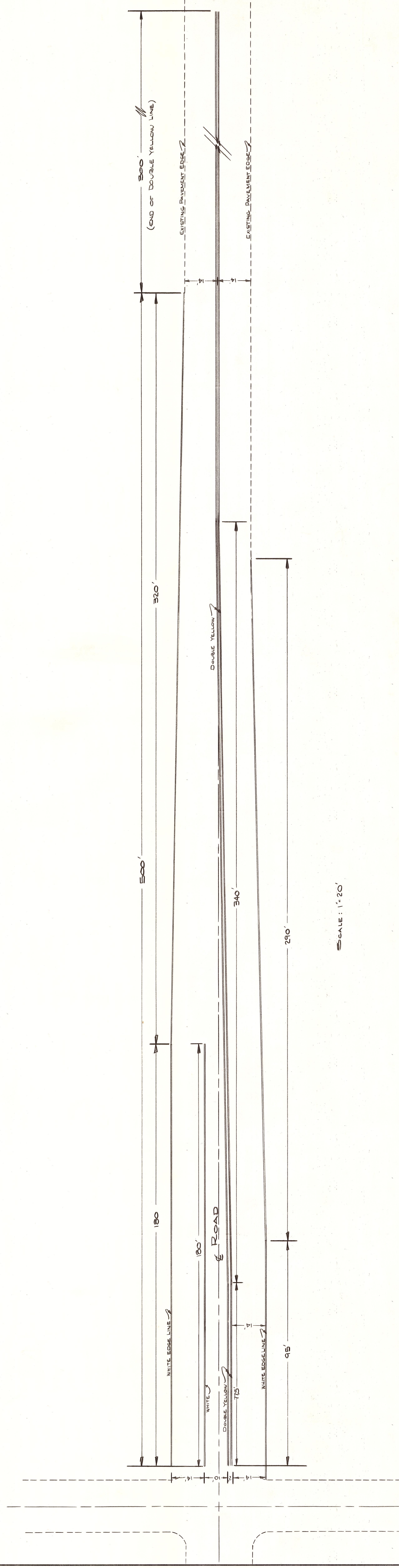
SCALE: H 1"=100' CRP
 DRAWN BY SAY DATE AUG. 1972 SHEET 2 OF 2
 APPROVED: 8/16/72 *Ernest S. Blossom* COUNTY ROAD ENGINEER





SCALE: 1" = 20'

OFFICE OF COUNTY ROAD ENGINEER
KITTITAS COUNTY
 ELLENSBURG, WASHINGTON
VANTAGE HIGHWAY
 STACK-UP STORAGE LANES INTERSECTIONS
 PFENNING RD. & WILSON CR. ROAD INTERSECTIONS
 SCALE: H AS SHOWN CRP
 DRAWN BY SAY DATE AUG. 1972 SHEET 2 OF 2
 APPROVED: *[Signature]* 8/16/72 DATE
 COUNTY ROAD ENGINEER



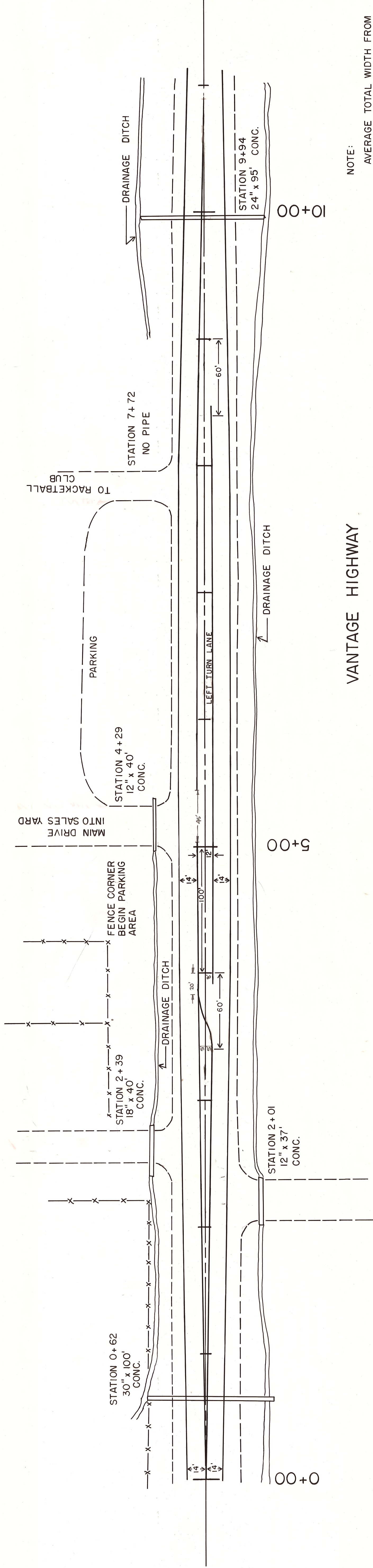
SCALE: 1" = 20'

OFFICE OF COUNTY ROAD ENGINEER
KITTITAS COUNTY
 ELLENSBURG, WASHINGTON
VANTAGE HIGHWAY
 STACK-UP STORAGE LANES

SCALE: $\frac{1}{2}$ " AS SHOWN CRP
 DRAWN BY SAJ DATE AUG, 1973 SHEET 1 OF 1
 APPROVED: _____ DATE _____ COUNTY ROAD ENGINEER



SCALE 1" = 40'



VANTAGE HIGHWAY

NOTE:

AVERAGE TOTAL WIDTH FROM
SHOULDER TO SHOULDER IS 50'.

DEPT. OF PUBLIC WORKS

KITTITAS COUNTY
ELLENSBURG, WASHINGTON

STACKING LANE
VANTAGE HIGHWAY

SCALE: $\frac{H}{V} = \frac{1}{40}$ CRP

DRAWN BY DLT DATE MAY 14, 1981 SHEET 1 OF 1

APPROVED: _____

DATE _____ DIRECTOR OF PUBLIC WORKS