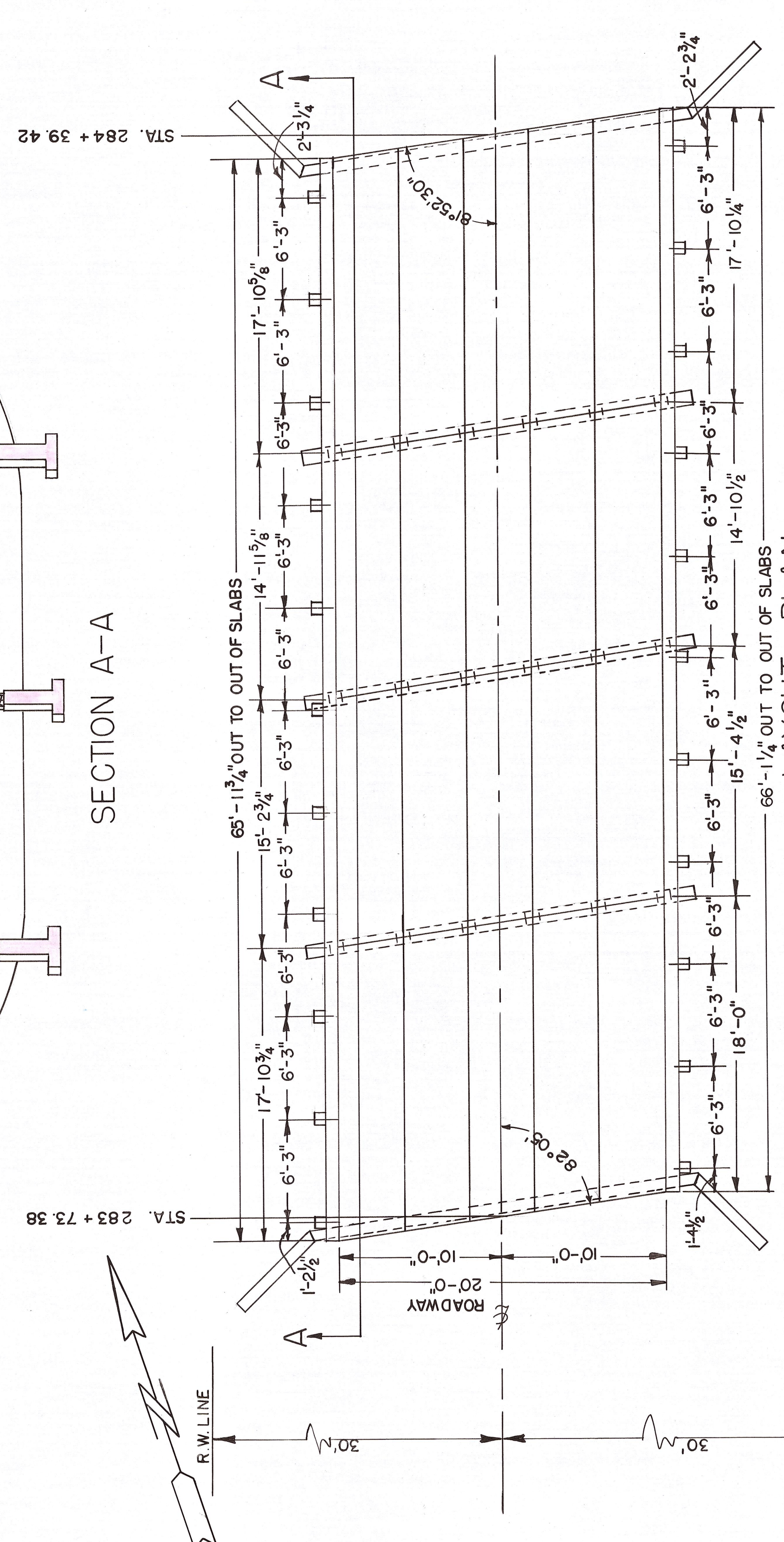
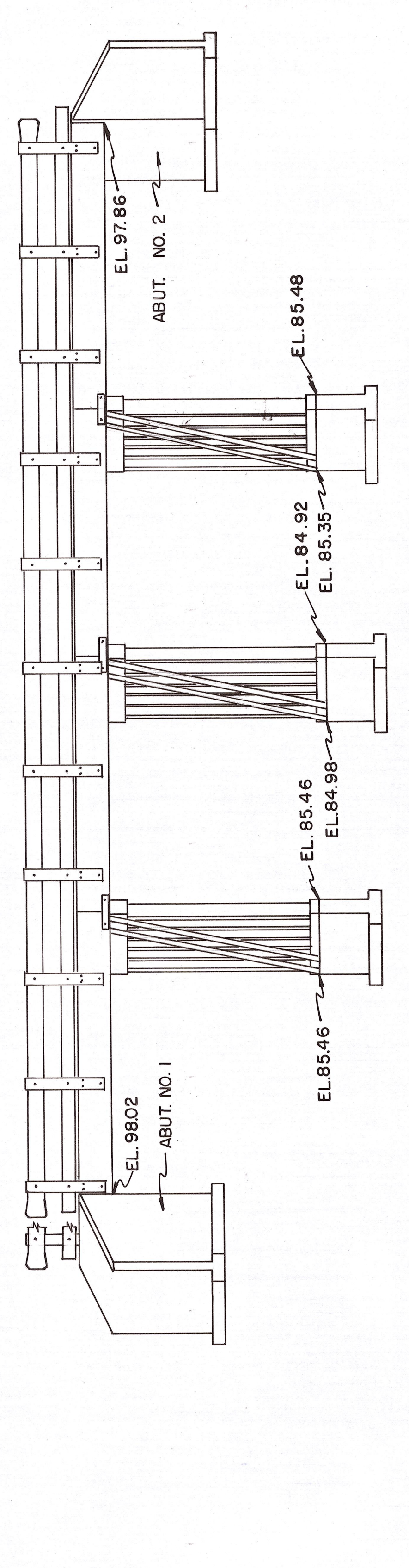


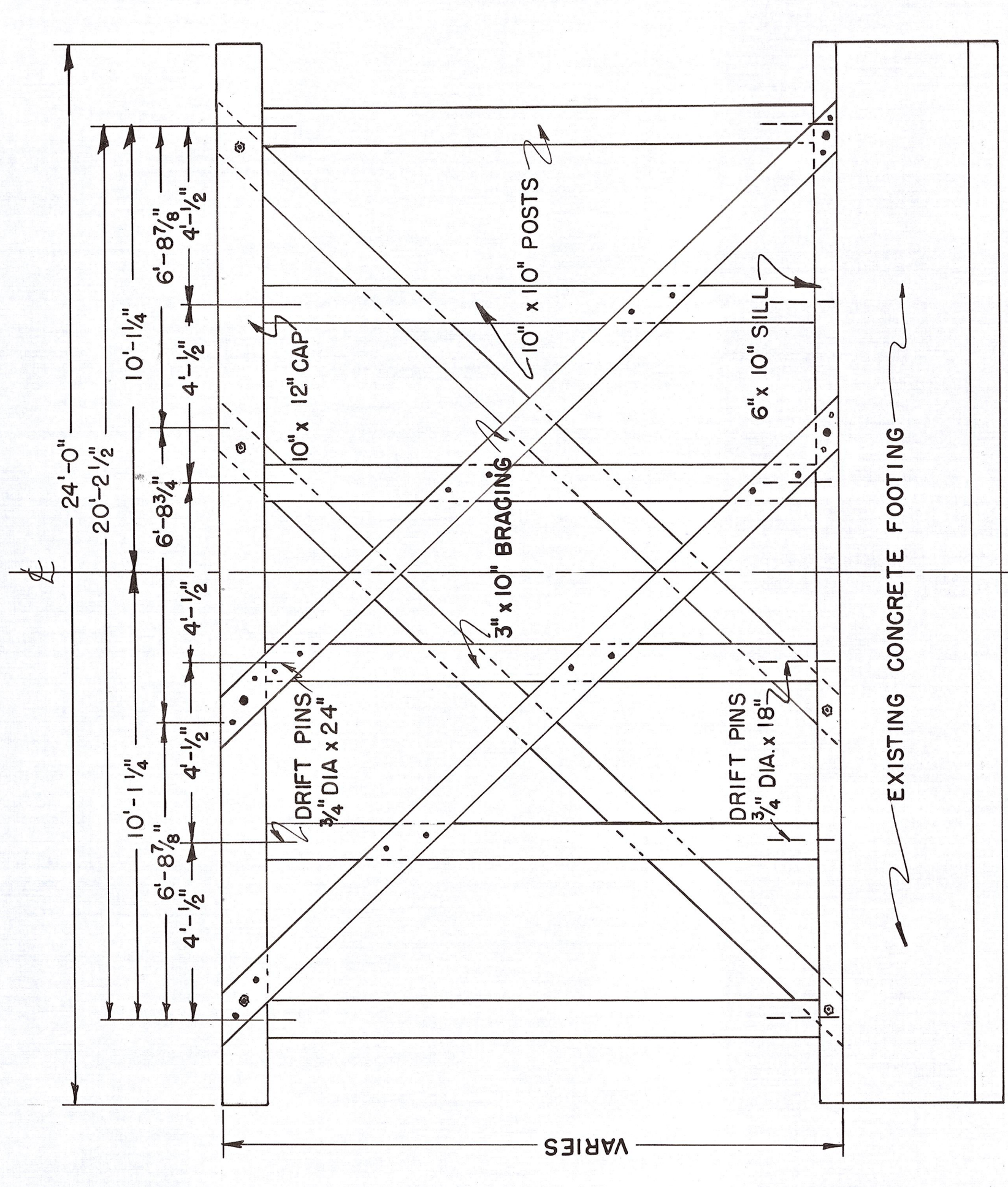
SECTION A-A



LAYOUT PLAN  
SCALE 3/16" = 1'-0"

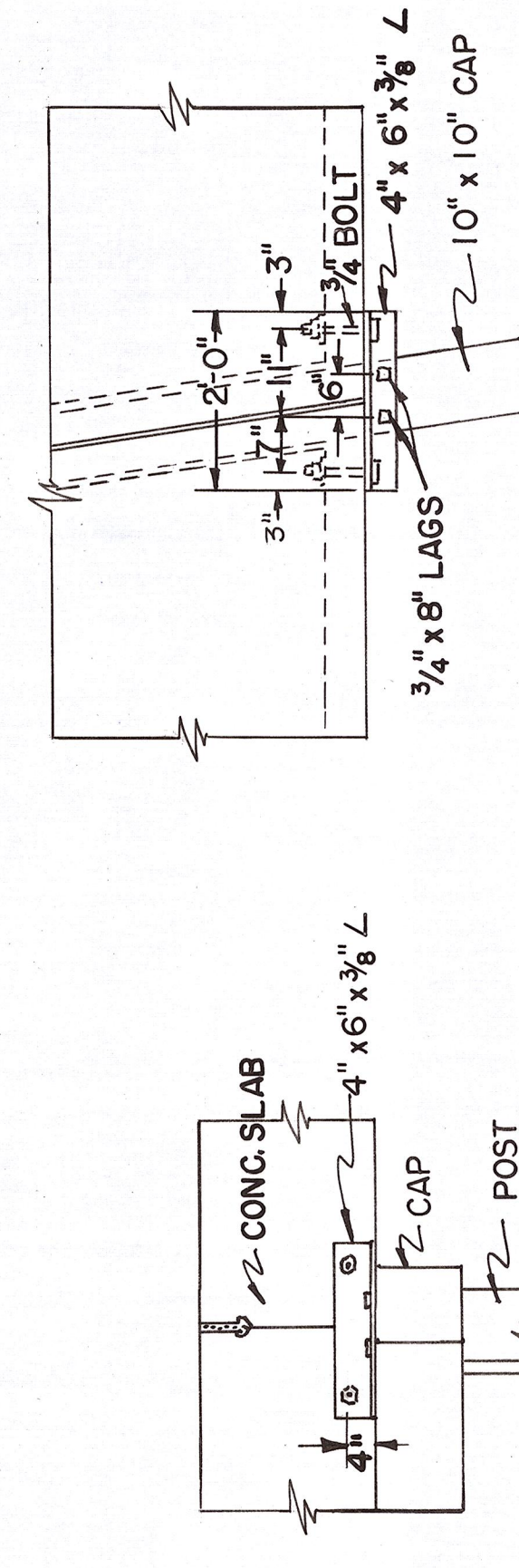


ELEVATION



BENT ELEVATION  
SCALE - 3/8" = 1'-0"

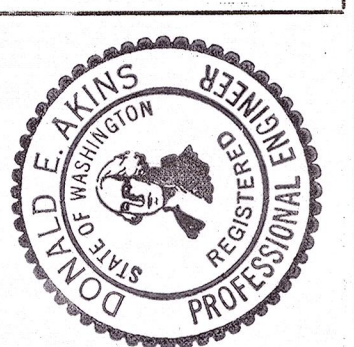
NOTE - ALL "X" BRACING SHALL BE FASTENED AT EACH END WITH 1 - 3/4" FLAT HEAD BOLT AND 2 - 3/8" x 8" BOAT SPIKES. FASTEN INTERMEDIATE POINTS WITH 2 - 3/8" 8" BOAT SPIKES.



DETAIL OF BENT ENDS  
SCALE - 1/2" = 1'-0"

OFFICE OF COUNTY ROAD ENGINEER  
**KITTITAS COUNTY**  
 ELLENSBURG, WASHINGTON  
**HILINE CANAL BRIDGES**  
 F.A.S. - 0563(2)

BRIDGE NO. 96091  
 SCALE: 1/4" AS SHOWN CRP 9-61  
 DRAWN BY MFG DATE JUNE, 1961 SHEET 5 OF 6  
 APPROVED: JUNE 26, 1961 DATE  
 COUNTY ROAD ENGINEER



# SUMMARY OF QUANTITIES

ITEM NO.	ITEM	BR. NO.		BR. NO.		BR. NO.		TOTAL QUANTITY		UNIT
		L.S.	L.S.	L.S.	L.S.	LUMP SUM	L. S.			
1	REMOVING EXISTING TIMBER STRUCTURES (4)	95021	95011	96082	96091					
2	TREATED TIMBER	3	6	3	3			15		M B M
3	PRECAST REINF. CONC. DECK SLABS	L.S.	L.S.	L.S.	L.S.			LUMP SUM		L. S.
4	GUARD RAIL	132	206	132	132			602		LIN. FT.

BRIDGE NO. 95021 STA. 81+51.36 TO 82+16.64  
 BRIDGE NO. 95011 STA. 123+02.87 TO 124+07.52  
 BRIDGE NO. 96082 STA. 241+49.34 TO 242+15.46  
 BRIDGE NO. 96091 STA. 283+73.38 TO 284+39.42

PROJECT LIMITS  
 65.28 FT. TOTAL LENGTH  
 104.65 FT. 302.09 FT.  
 66.12 FT.  
 66.04 FT. 0.057 MILE

NOTE: FOR SPECIAL FEATURES, SEE SPECIAL PROVISIONS.

## GENERAL NOTES

ALL MATERIALS AND WORKMANSHIP SHALL BE IN ACCORDANCE WITH THE REQUIREMENTS OF THE STATE OF WASHINGTON, DEPARTMENT OF HIGHWAYS, STANDARD SPECIFICATIONS FOR ROAD AND BRIDGE CONSTRUCTION, DATED JULY, 1957 AND THE ATTACHED SPECIAL PROVISIONS.

LOCATION, ELEVATIONS, ANGLES, AND ALL DIMENSIONS OF EXISTING ABUTMENTS AND FOOTINGS ARE TO BE CHECKED IN THE FIELD BEFORE PRECAST CONCRETE DECK UNITS ARE CAST. IT SHALL BE THE SOLE RESPONSIBILITY OF THE CONTRACTOR TO SEE THAT ALL DIMENSIONS ARE CHECKED IN THE FIELD BEFORE ORDERING MATERIALS.

GROUT TO BE FURNISHED BY THE CONTRACTOR WILL BE IN ACCORDANCE WITH SECTION 42-309 OF THE STANDARD SPECIFICATIONS.

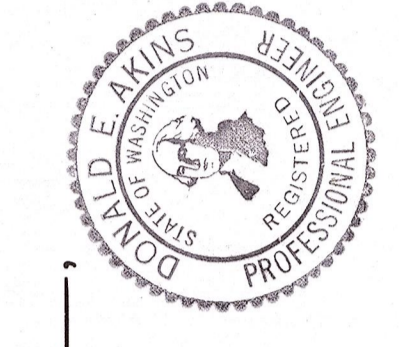
ALL LUMBER AND TIMBER SHALL BE CONSTRUCTION GRADE DOUGLAS FIR COAST REGION NO. 1 S4S.

ALL LUMBER AND TIMBER, EXCEPT THAT USED IN THE CURB AND GUARD RAIL, SHALL BE TREATED BY THE EMPTY CELL PROCESS TO PROVIDE A MINIMUM RETENTION OF 10 POUNDS OF CREOSOTE OIL IN ACCORDANCE WITH THE STANDARD SPECIFICATIONS. THE LUMBER USED IN THE CURB AND GUARD RAIL ASSEMBLY SHALL RECEIVE A WOLMAN SALT TREATMENT WITH A MINIMUM RETENTION OF 0.55 LB. PER CU. FT. IN ACCORDANCE WITH THE STANDARD SPECIFICATIONS.

ALL HARDWARE SHALL BE GALVANIZED (A.S.T.M. DESIGNATION A-153).

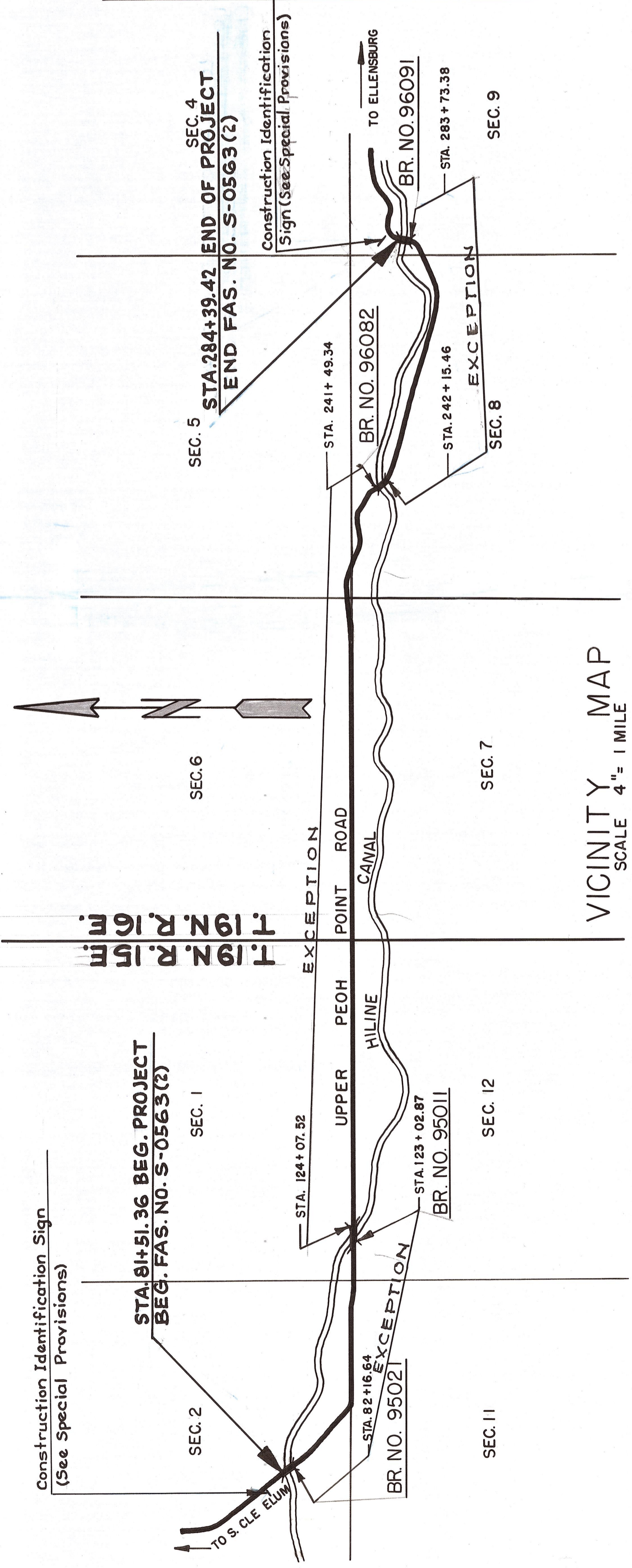


W. S. S. S.  
 DIRECTOR OF HIGHWAYS  
 SHEETS 1 TO 6 INCL.  
 APPROVED JULY 25, 1961

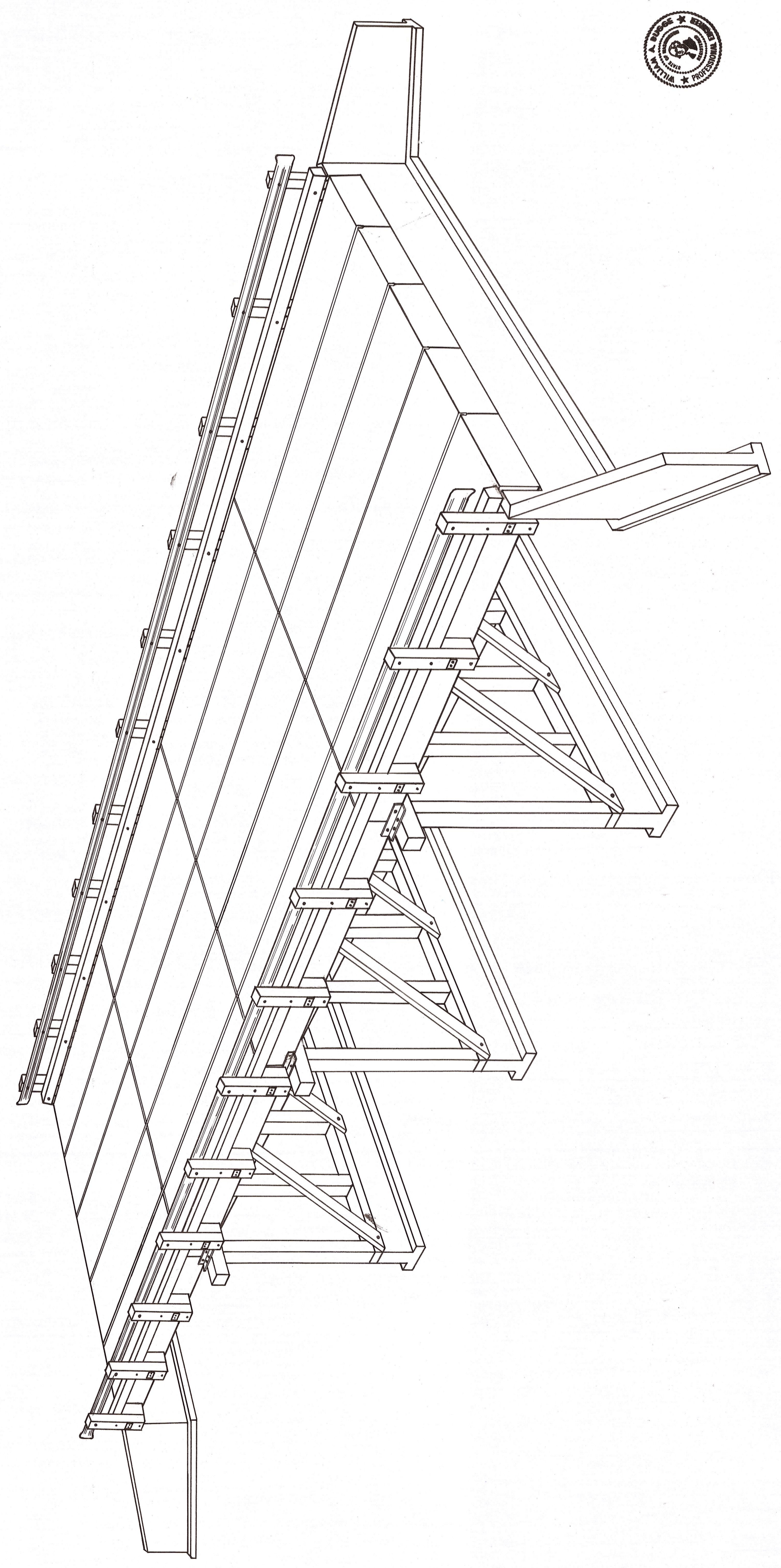


APPROVED THIS 26 DAY OF JUNE, 1961, BY THE BOARD OF KITTITAS COUNTY COMMISSIONERS.  
 JOE MCMANAMY, CHAIRMAN

OFFICE OF COUNTY ROAD ENGINEER  
**KITTITAS COUNTY**  
 ELLENSBURG, WASHINGTON  
 HILINE CANAL BRIDGES  
 F.A.S.-0563(2)  
 LOCATION SHEET  
 SCALE: AS SHOWN CRP 9-61  
 DRAWN BY MFG DATE JUNE, 1961 SHEET 1 OF 6  
 APPROVED: JUNE 26, 1961  
 COUNTY ROAD ENGINEER



VICINITY MAP  
 SCALE 4" = 1 MILE



TYPICAL PRECAST CONCRETE BRIDGE  
 SKEWS NOT SHOWN  
 LOADING - H-15, S-12