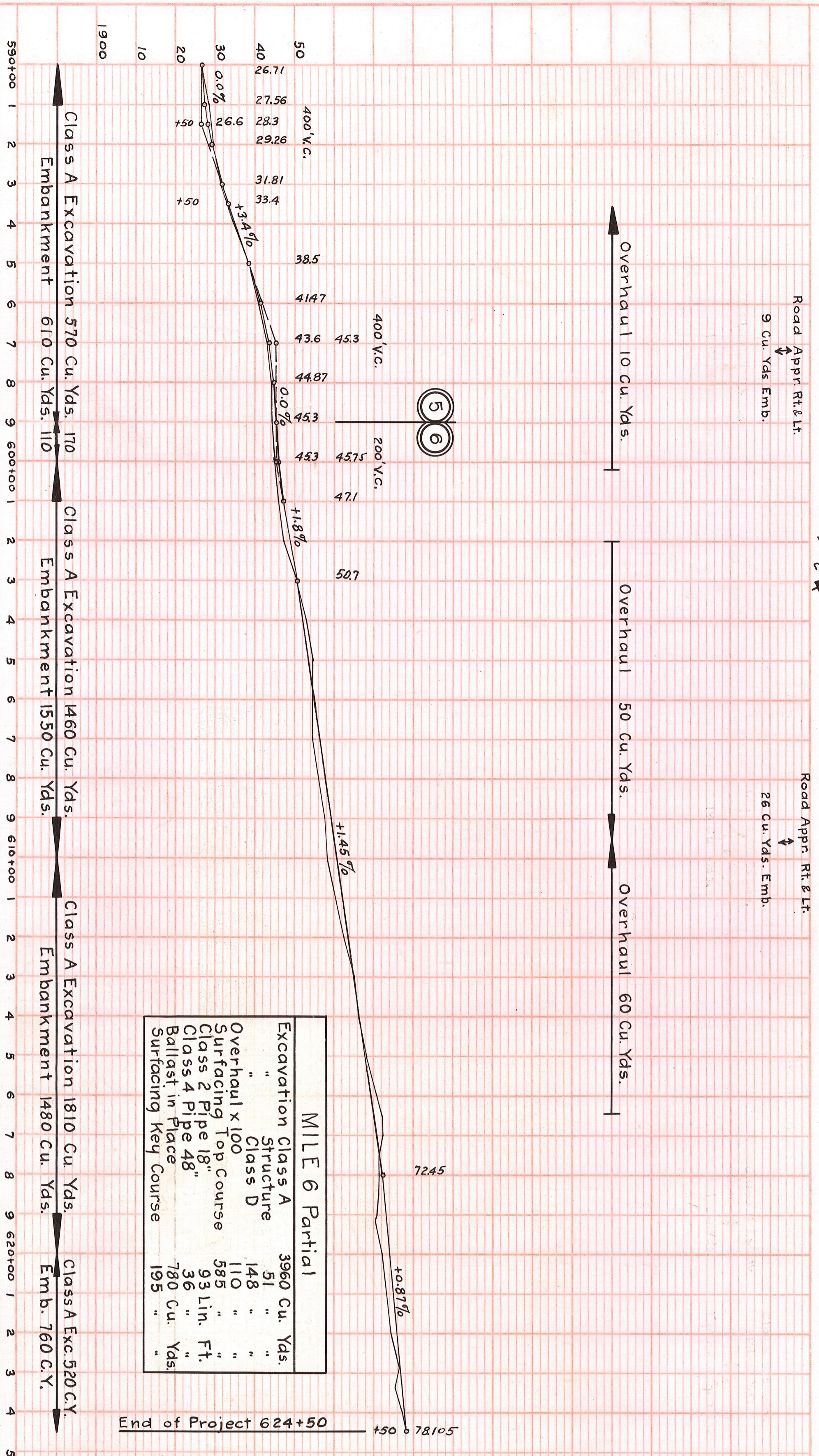


PROFILE	SURVEYED	BY	DATE
NOTE BOOK NO.	PLOTTED		
	GRADES CHECKED		
	BY M.S. NOTED		
	STRUCTURE NOTATIONS CHECKED		

PLAN	SURVEYED	BY	DATE
NOTE BOOK NO.	PLOTTED		
	ALIGNMENT CHECKED		
	BY M.S. NOTED		
	RT. OF WAY CHECKED		

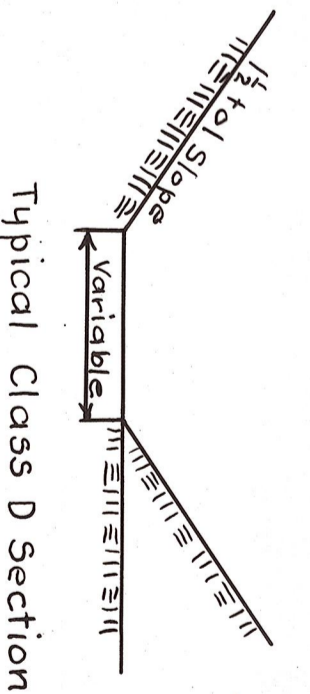
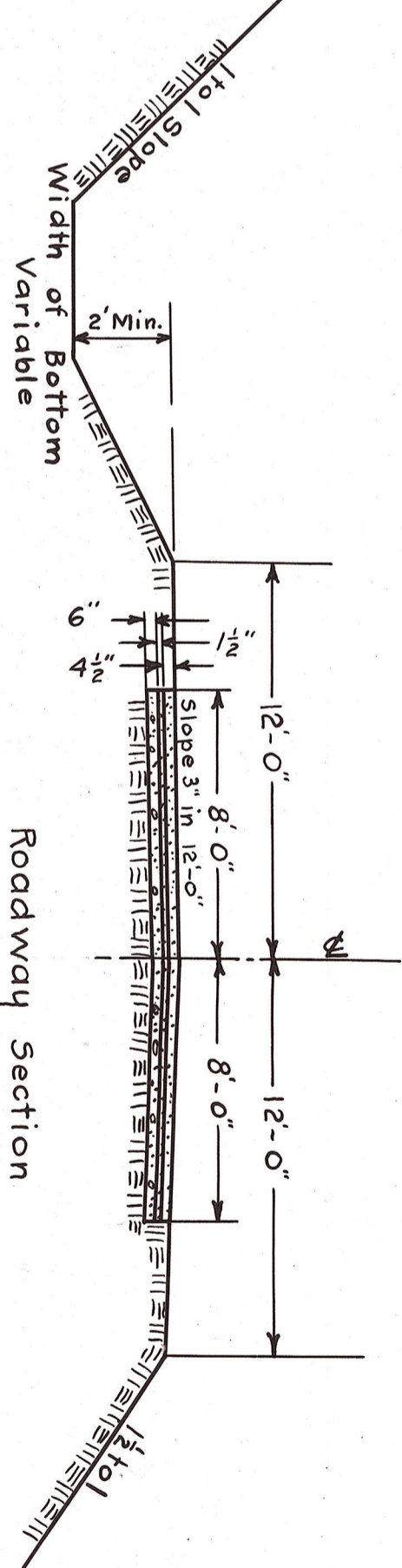
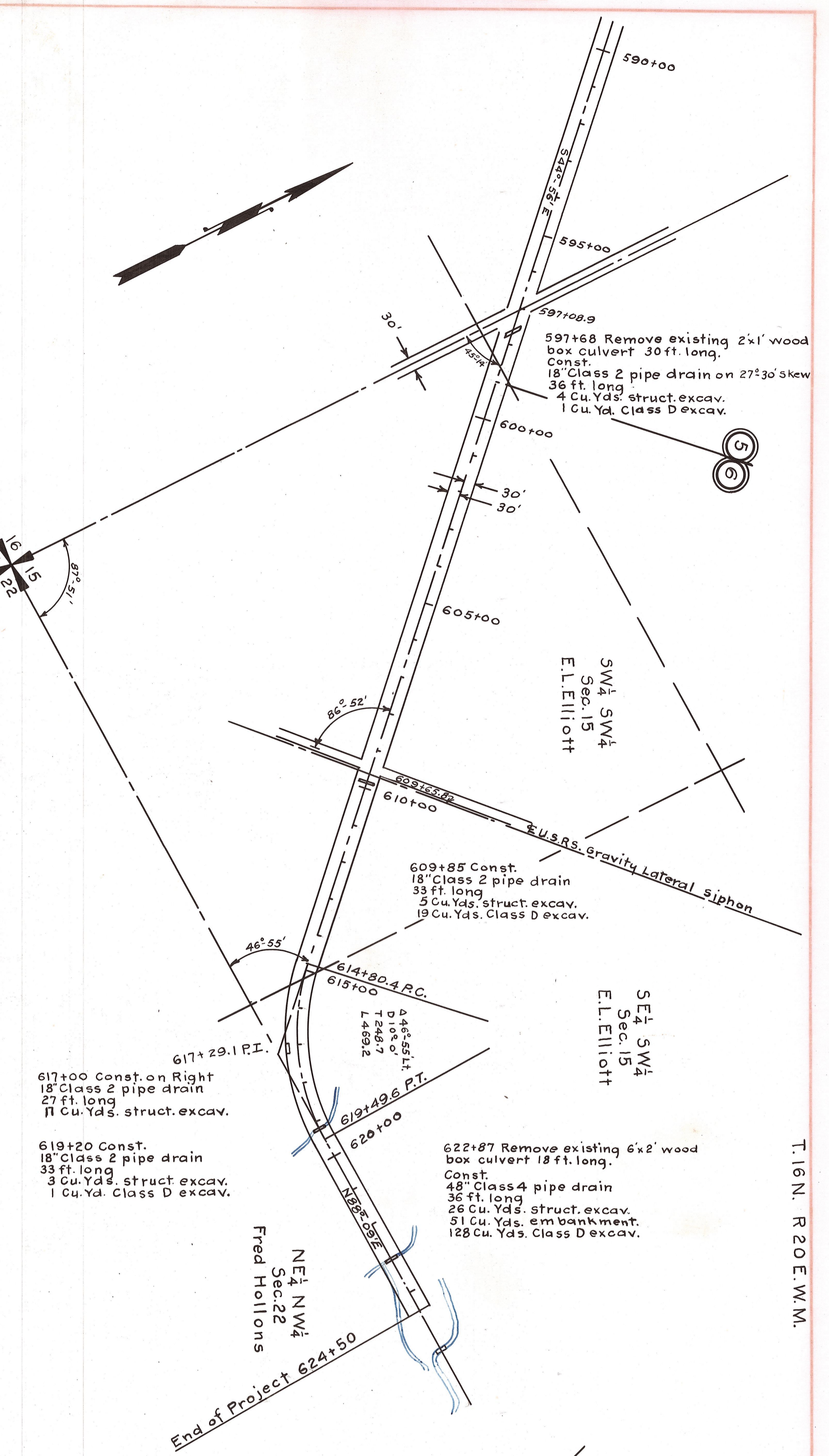


**MILE 6 Partial**

Excavation Class A	3960 Cu. Yds.
Structure Class D	31 "
Overhaul x 100	148 "
Surfacing Top Course	110 "
Class 2 Pipe 18"	585 "
Class 4 Pipe 48"	93 Lin. Ft.
Ballast in Place	36 "
Surfacing Key Course	780 Cu. Yds.
	195 "

**Sta. 395+00 to 624+50 Summary of Quantities Miles 5.48**

MILE	Excavation Class A Cu. Yds.	Excavation Class D Cu. Yds.	Overhaul Ballast Cu. Yds.	Surfacing in Roadway Top Course	Surfacing in Roadway Key Course	Class 3 Pipe Lin. Ft.	Class 4 Pipe Lin. Ft.	Hand Placed Ballast Cu. Yds.
1	683	0	68	4	2630	1590	1190	400
2	926	0	57	180	2170	1560	1185	395
3	5424	55	33	1320	1560	1170	390	117
4	10000	69	740	1490	1580	1180	400	186
5	7800	41	46	670	1580	1180	400	177
6	3960	51	148	110	780	585	195	93
Total	43274	341	1151	8390	8670	6490	2180	18
						870	30	30
						252	36	22



Standard super-elevation and widening used on curves. Surfacing shall be placed in three courses, i.e. Ballast course 6" thick - 5/8" run gravel. Top course 1 1/2" thick - 1/2" max. crushed stone. Top course 4 1/2" thick - 3/4" max. crushed stone. Ballast 1560 Cu. Yds. per mile. Key course 390 Cu. Yds. per mile. Top course 1170 Cu. Yds. per mile. Gravel trench to be formed by graders. For special features see Special Provisions.

**MAP AND PROFILE**  
**SECONDARY ROAD PROJECT NO. 4.**  
**KITTITAS COUNTY**

APPROVED:  
SCALE: HORIZ. ONE IN. = 200 FT. VERT. ONE IN. = 20 FT.  
SHEET 5 OF 5 SHEETS

W.T. BOWMAN  
County Engineer