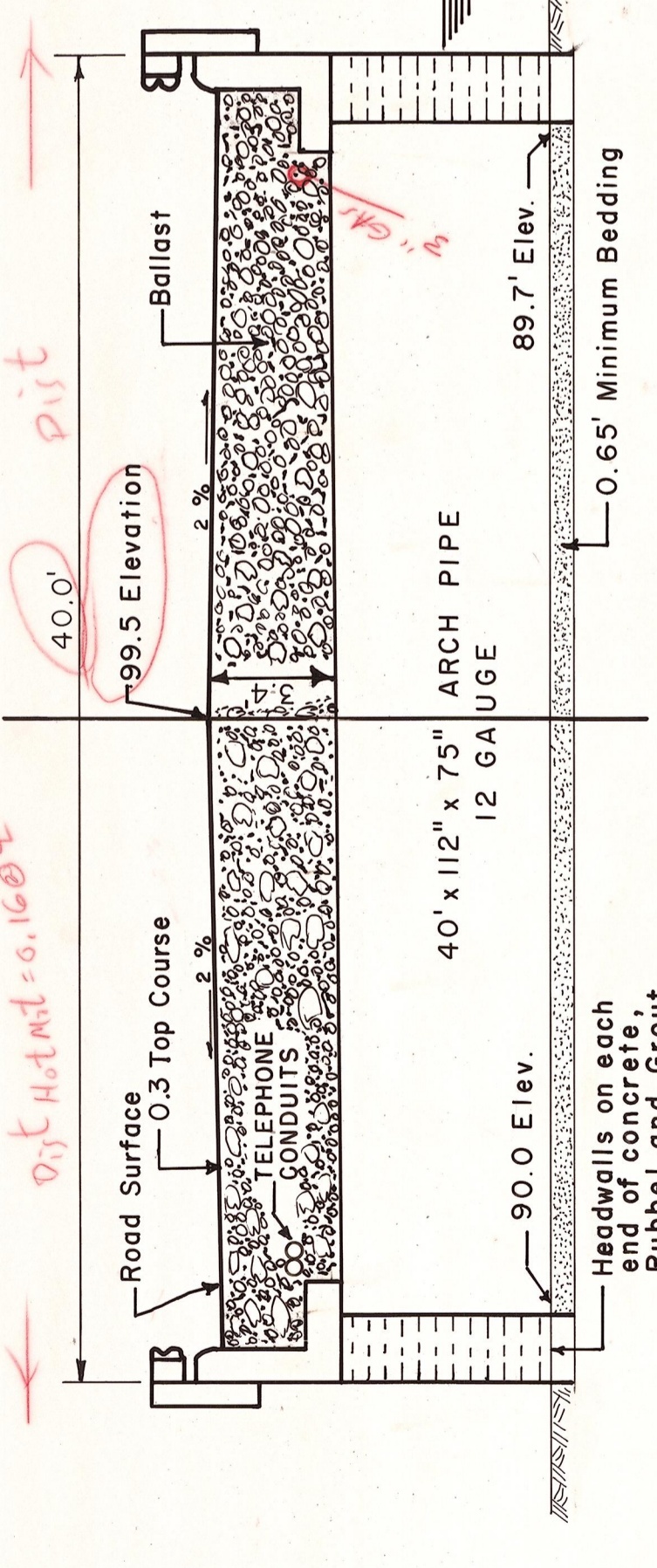


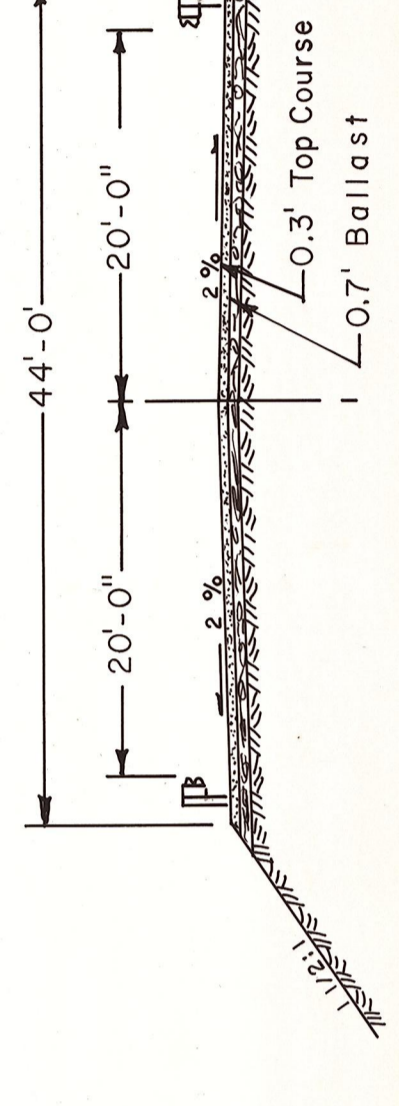
NOTES

- Existing wood piling to be cut off level with bottom of excavation
- Existing wood bridge to be removed
- Construction will conform to State of Washington Standard Specifications for Bridge and Road Construction, 1980 Edition
- U.G. - Underground Gas Line

PLAN
Scale: 1" = 5'

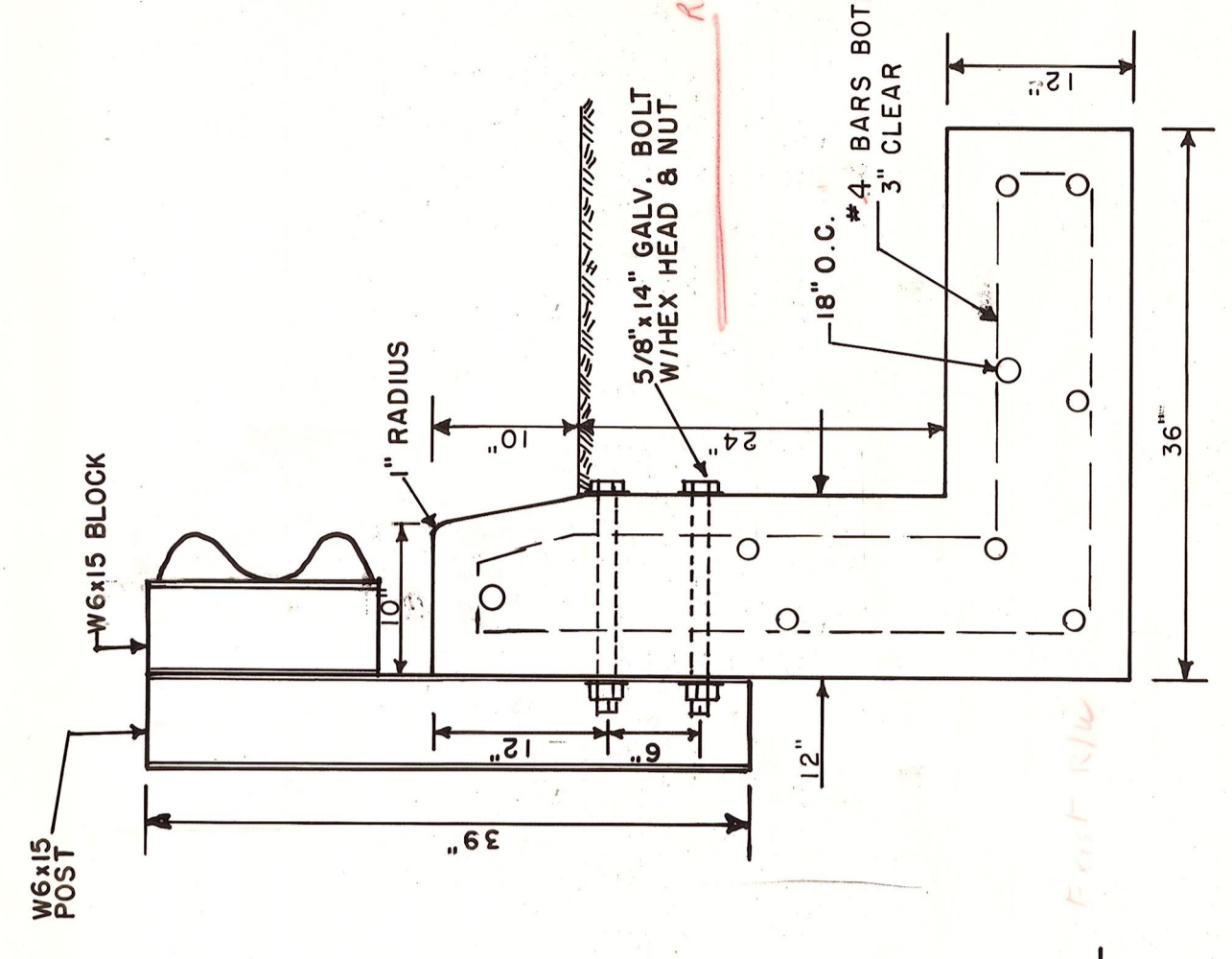


SECTION A-A
Scale: 1" = 5'



ROADWAY SECTION
Scale: 1" = 10'

- MATERIALS LIST**
- 80 LF 112" x 75" Arched CMP-12 Gauge
 - 175 LF Type I Beam Guardrail
 - 10 EA Double Beam Guardrail
 - 10 EA Galv. Steel Guardrail Posts
 - 28 EA Galv. Steel Guardrail Blocks
 - 28 EA Wood Guardrail Blocks
 - 24 EA Design C Terminal Sections
 - 24 EA 2' x 2' x 6' Concrete Bunker Blocks
 - 210 CY 1/4" Bedding Material
 - 1500 CY Pit Run Ballast
 - 200 CY Top Course (Sta 59+25 to Sta 62+25)
 - 15 CY Rip Rap Energy Dissipator



RETAINING WALL DETAIL
Scale: 1" = 1'

4-27-82	AS BUILT - LOCATION UG TELEPHONE LINES	RJR
3-24-82	REVISIONS	RJR
DATE	BY	BY

KITTITAS COUNTY DEPARTMENT OF PUBLIC WORKS
KITTITAS COUNTY
ELENSBURG, WASHINGTON
DAMMAN ROAD
 REPLACE BRIDGE NO. 78112 WITH
 2 112" x 75" x 40' ARCH PIPES
 SCALE: H AS SHOWN CRP
 DRAWN BY RJR DATE MAR. 1982 SHEET 1 OF 1
 APPROVED: *[Signature]* DATE 3/19/82 DIRECTOR OF PUBLIC WORKS

AS BUILT PLANS

ELEVATION
Scale: 1" = 5'