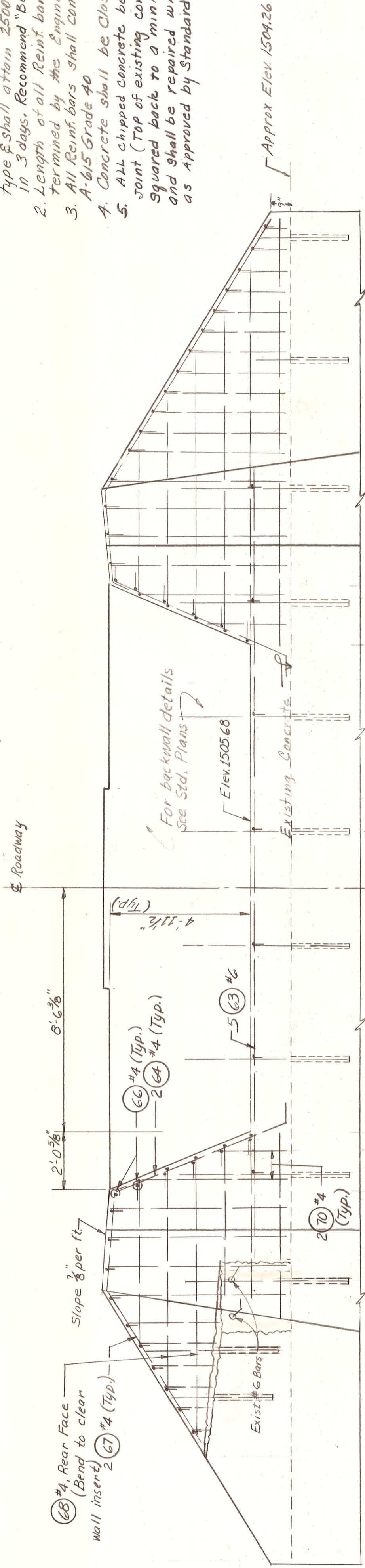
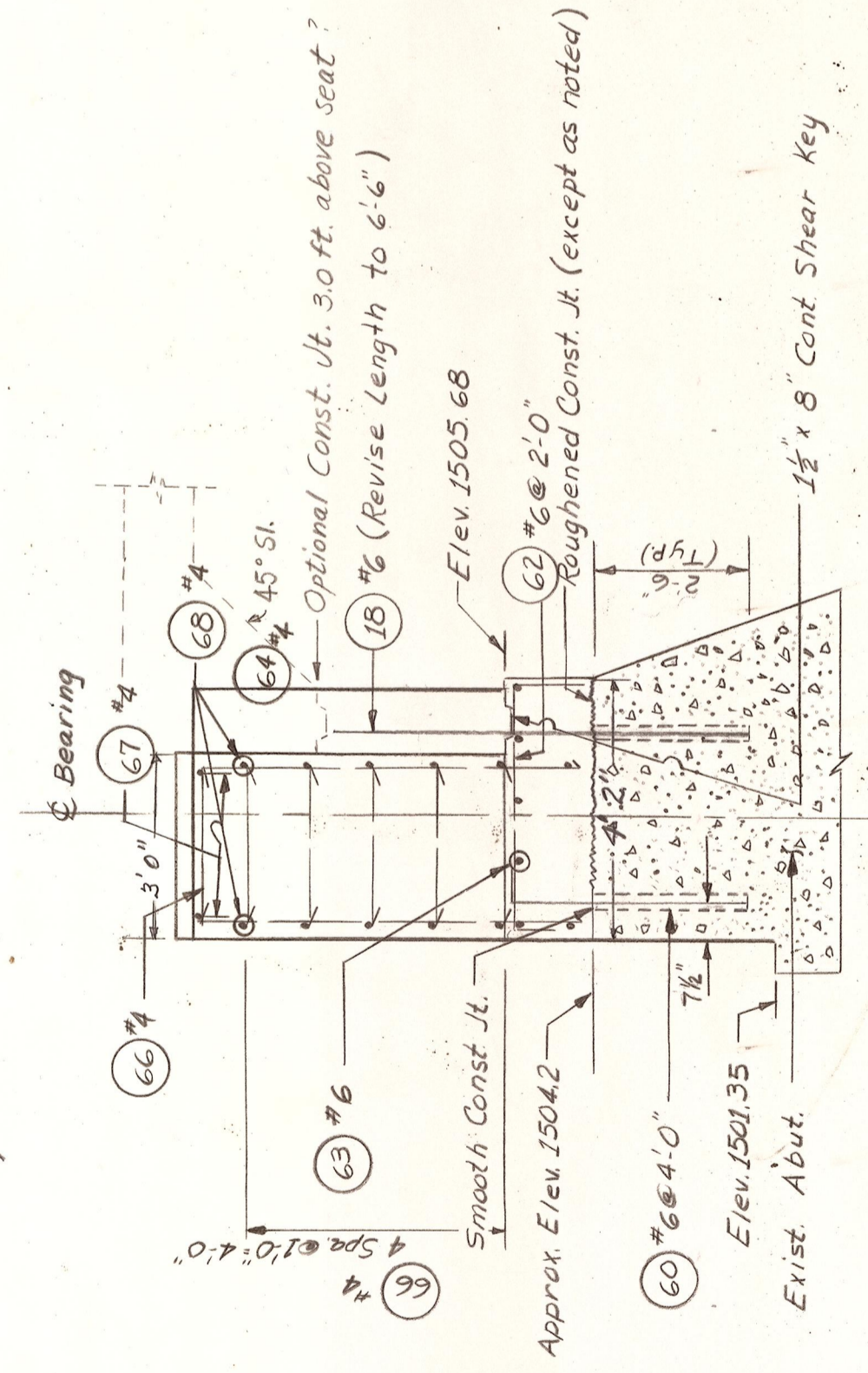


PLAN - ABUTMENT NO. 1
Shown Looking Back on Stationing

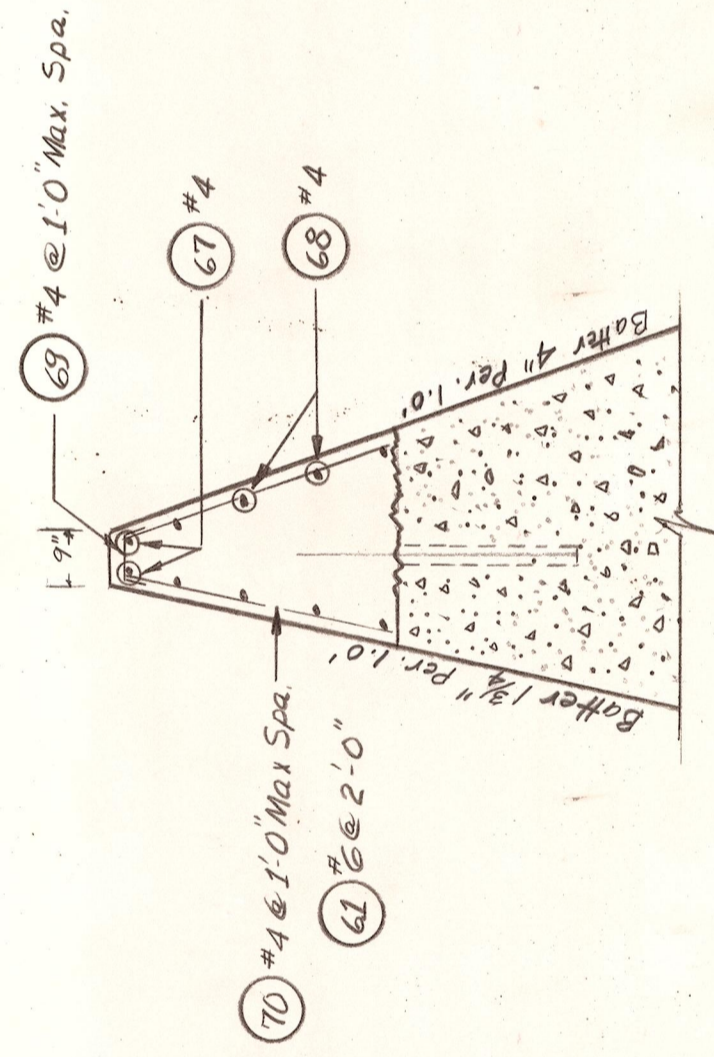
- Notes
- 2"Ø Holes shall be drilled for #6 Dowels in existing Abutment and then grouted. Grout shall be a non-shrink type & shall attain 2500 psi min strength in 3 days. Recommend "Burke's Metallic Grout."
 - Length of all Reinf. bars shall be determined by the Engineer.
 - All Reinf. bars shall conform to A.S.T.M. A-615 Grade 40
 - Concrete shall be Class B
 - All chipped concrete below old construction joint (Top of existing concrete) is to be squared back to a minimum depth of 2" and shall be repaired with an epoxy method as approved by Standard Specifications.



Note: #4 Bars may be cut and lapped where necessary (2'-0" Min. Lap).



SECTION A-A



SECTION C-C
For details not shown, See Section A-A

OFFICE OF COUNTY ROAD ENGINEER
KITITAS COUNTY
ELLENSBURG, WASHINGTON

F.A.S. - 0432 (1)
LOWER YAKIMA RIVER BRIDGE
ABUTMENT NO. 1

SCALE: $\frac{1}{8}'' = 1'-0''$ CONTRACT NO. 9187

DRAWN BY *Sey* DATE July, 1972 Supplemental Sht. No. 4 A
APPROVED: *Garland J. Blomquist* COUNTY ROAD ENGINEER
DATE 7/17/72