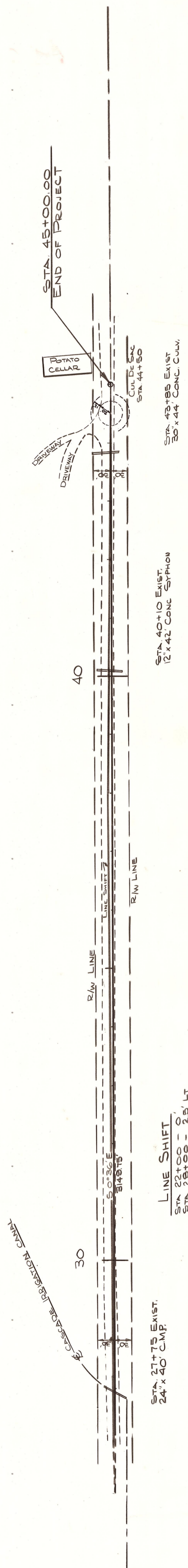


T 17 N.R. 19E.W.M.



LINE SHIFT

STA 22+00 - 28+00	5' AP
STA 28+00 - 30+00	7' AP
STA 30+00 - 40+00	0'
STA 40+00 - 45+00	0'

STA. 27+75 EXIST.  
24' x 40' CMP.

STA. 40+10 EXIST.  
12' x 42' CONC. SAPHON

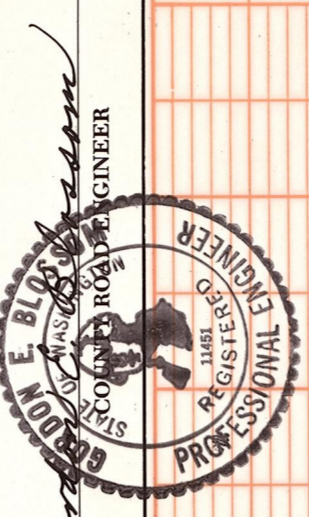
STA. 43+85 EXIST.  
30' x 44' CONC. CULV.

OFFICE OF COUNTY ROAD ENGINEER  
KITITAS COUNTY  
ELLENSBURG, WASHINGTON  
TOZER ROAD  
LENGTH .85 MILE

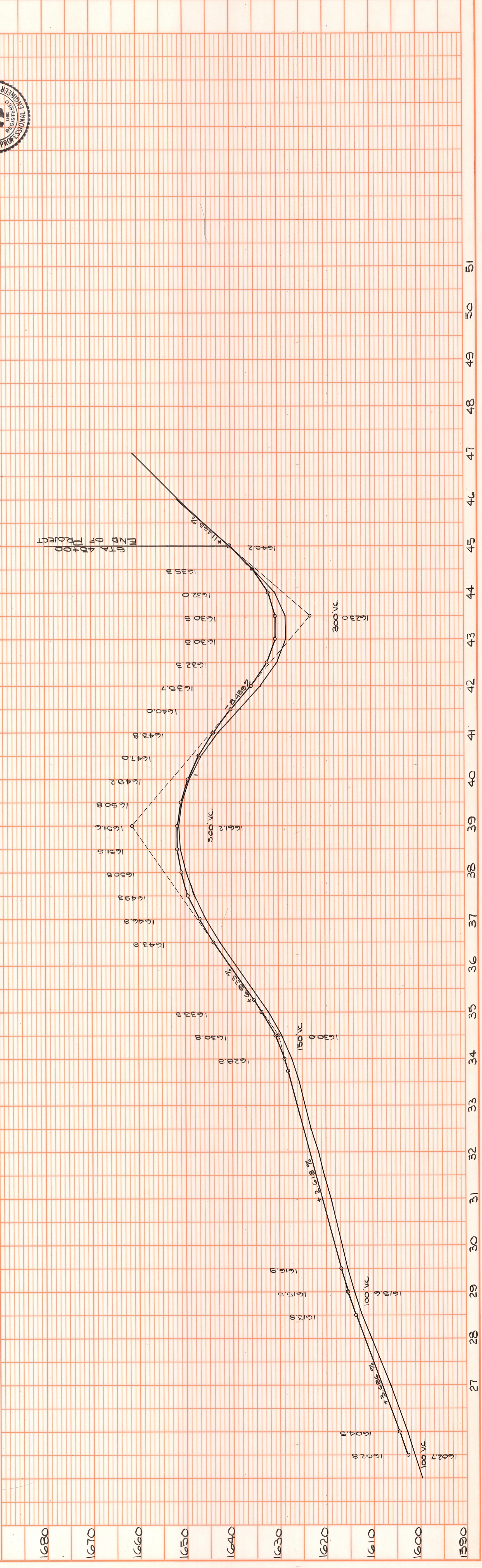
SCALE: H 1"=100'  
V 1"=10'

DRAWN BY S.S. DATE DECEMBER, 1971 SHEET 2 OF 2

APPROVED: 12/27/72 DATE



DATE	REVISIONS	BY
2/25/74	LINE SHIFTS 22+00 TO 45+00	S.S.
2/24/73	FINAL C.D. STA. 35+00 TO 45+00	S.S.



PLAN

NO. _____	DATE _____
BY _____	BY _____
REVISIONS	REVISIONS
NOTED	NOTED
ALIGNED CHECKED	ALIGNED CHECKED
NOTE BOOK	NOTE BOOK

PROFILE

NO. _____	DATE _____
BY _____	BY _____
REVISIONS	REVISIONS
NOTED	NOTED
GRADES CHECKED	GRADES CHECKED
NOTE BOOK	NOTE BOOK

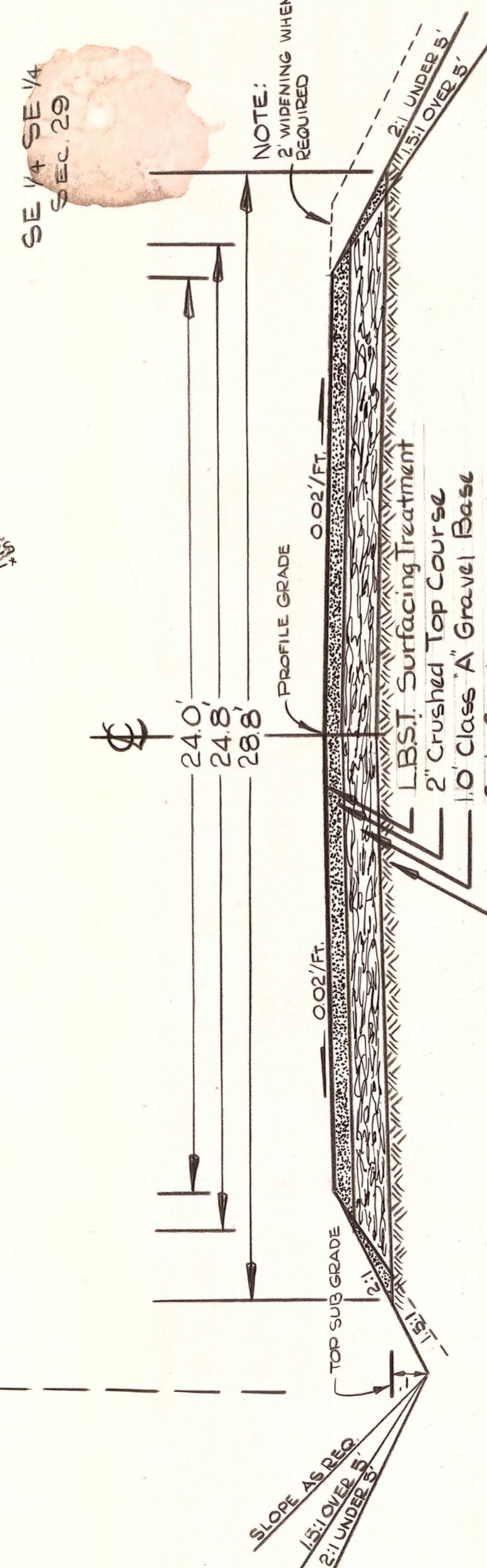
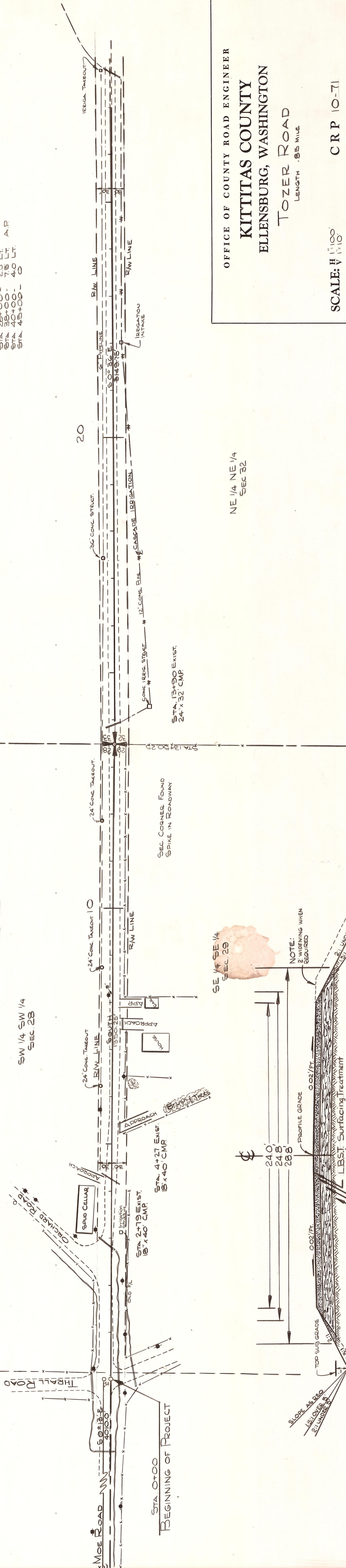
T. 17 N. R. 19 E. W.M.

LINE SHIFT  
 STA 22+00 - 0' LT  
 STA 28+00 - 25' LT AIP  
 STA 38+00 - 75' LT  
 STA 40+00 - 40' LT  
 STA 45+00 - 0'

NW 1/4 NW 1/4  
 SEC 33

SW 1/4 SW 1/4  
 SEC 28

NE 1/4 NE 1/4  
 SEC 32



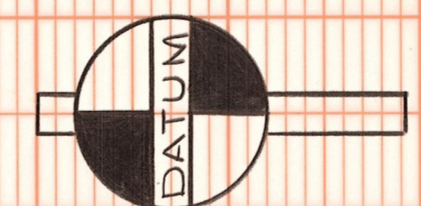
ROADWAY SECTION  
 SCALE: 1" = 4'

OFFICE OF COUNTY ROAD ENGINEER  
**KITITAS COUNTY**  
 ELLENSBURG, WASHINGTON  
**TOZER ROAD**  
 LENGTH .85 MILE

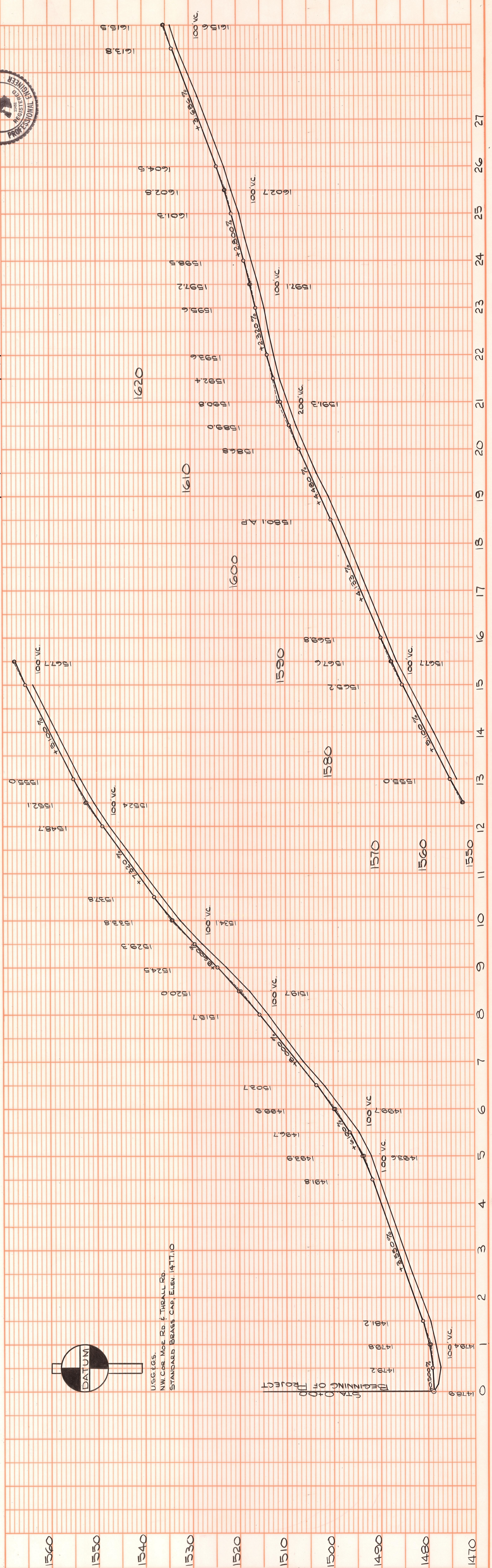
SCALE: H 1" = 100'  
 V 1" = 10'

DRAWN BY E. SAY DATE DECEMBER, 1971 SHEET 1 OF 2  
 APPROVED: *E. Say* DATE 12/21/72  
 COUNTY ROAD ENGINEER  
 PROFESSIONAL ENGINEER

DATE	REVISIONS	BY
2/28/72	LINE SHIFT 22+00 TO 45+00	BS
2/28/72	FINAL STA 38+00 TO 45+00	BS



USG TGS.  
 NW COR MOZE RD & THRALL RD.  
 STANDARD BRASS CAP ELEV 1471.0



DATE	BY	REVISIONS

DATE	BY	REVISIONS