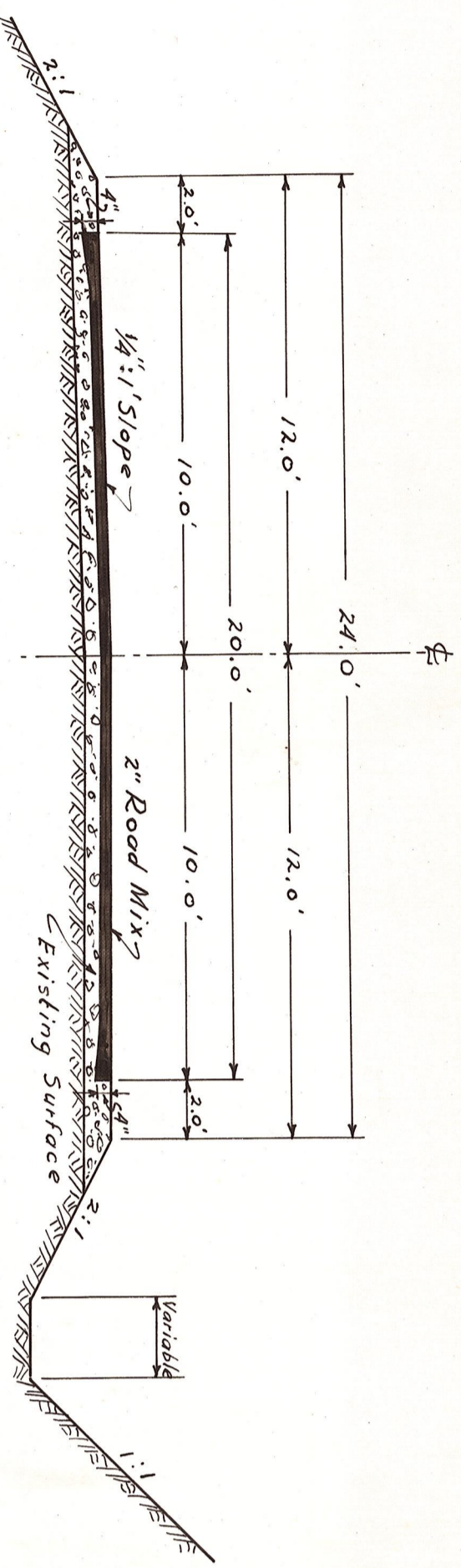
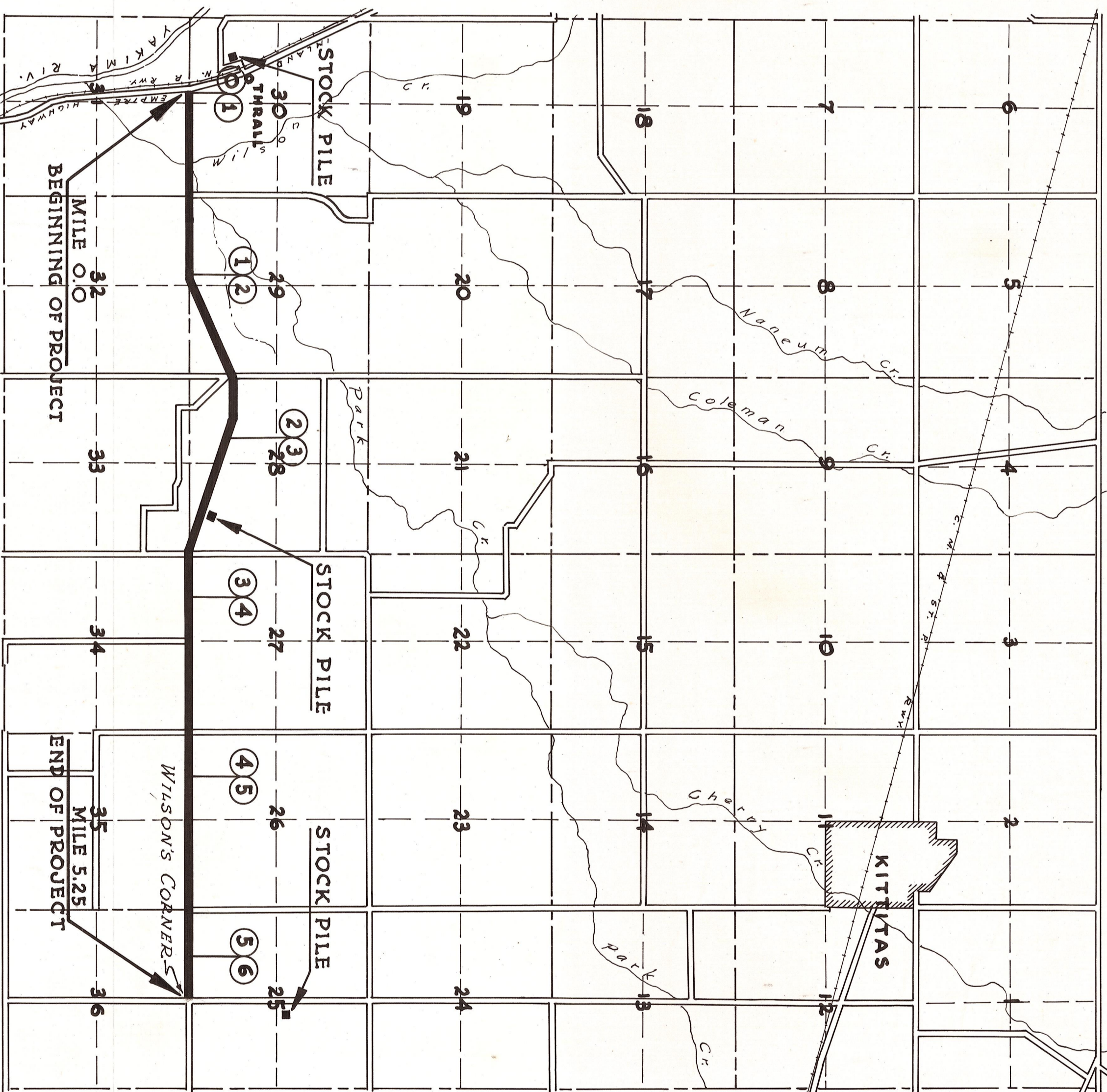


T 17N. R 19E. W.M.

Project No 21



TYPICAL SECTION



SUMMARY

M.P. 0.0 to M.P. 5.25 - THRALL TO WILSON'S CORNER - 5.25 MILES

MILE	PREPARATION AND FINISHING ROADWAY MILES	MINERAL AGGREGATE IN PLACE FROM STOCK PILE CU. YDS.	M.C.2. ROAD OIL TONS	MIXING AND FINISHING MILES	WATER IN PLACE M GALS.
1	1.0	490	71.5	1.0	5.71
2	1.0	490	71.5	1.0	5.71
3	1.0	490	71.5	1.0	5.71
4	1.0	490	71.5	1.0	5.71
5	1.0	490	71.5	1.0	5.71
6 PART	.25	120	17.5	.25	1.45
TOTALS	5.25	2570	375.0	5.25	30.00

KITTITAS COUNTY
STATE OF WASHINGTON
COUNTY ROAD PROJECT No 21

APPROVED 1939
 CHAIRMAN, *[Signature]*
 MEMBER, *[Signature]*
 MEMBER, *[Signature]*
 BOARD OF COUNTY COMMISSIONERS
 COUNTY ROAD ENGR. *[Signature]*