

T. 17 N. R. 19 E. W.M.

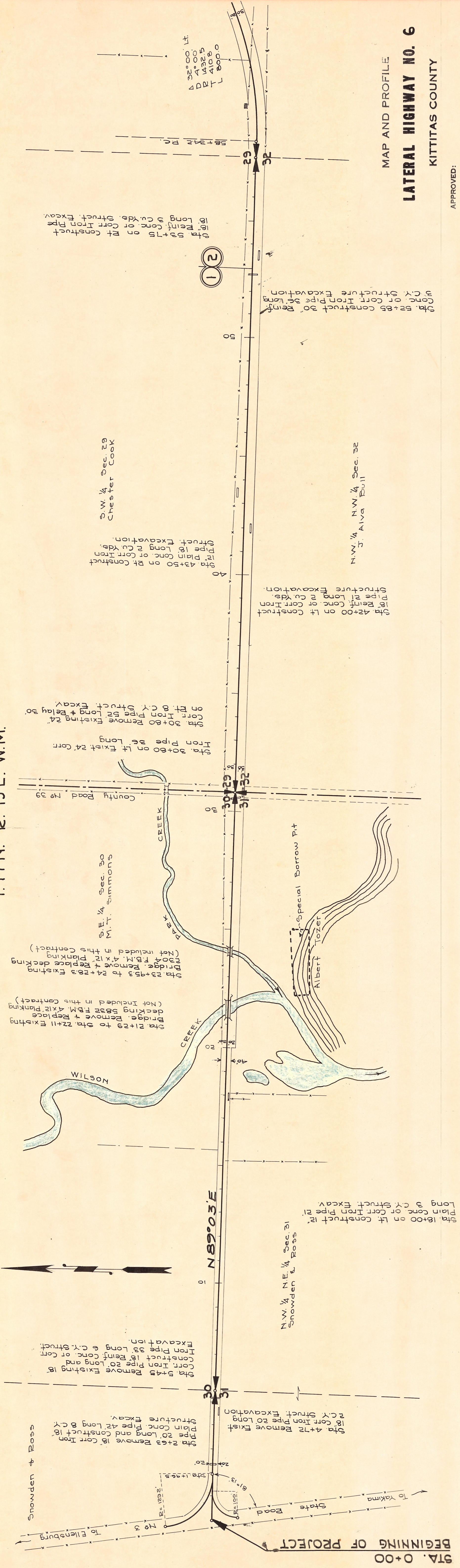
MAP AND PROFILE  
LATERAL HIGHWAY NO. 6  
KITITAS COUNTY

APPROVED:

SCALE: HORIZ. ONE IN. = 200 FT. VERT. ONE IN. = 20 FT.

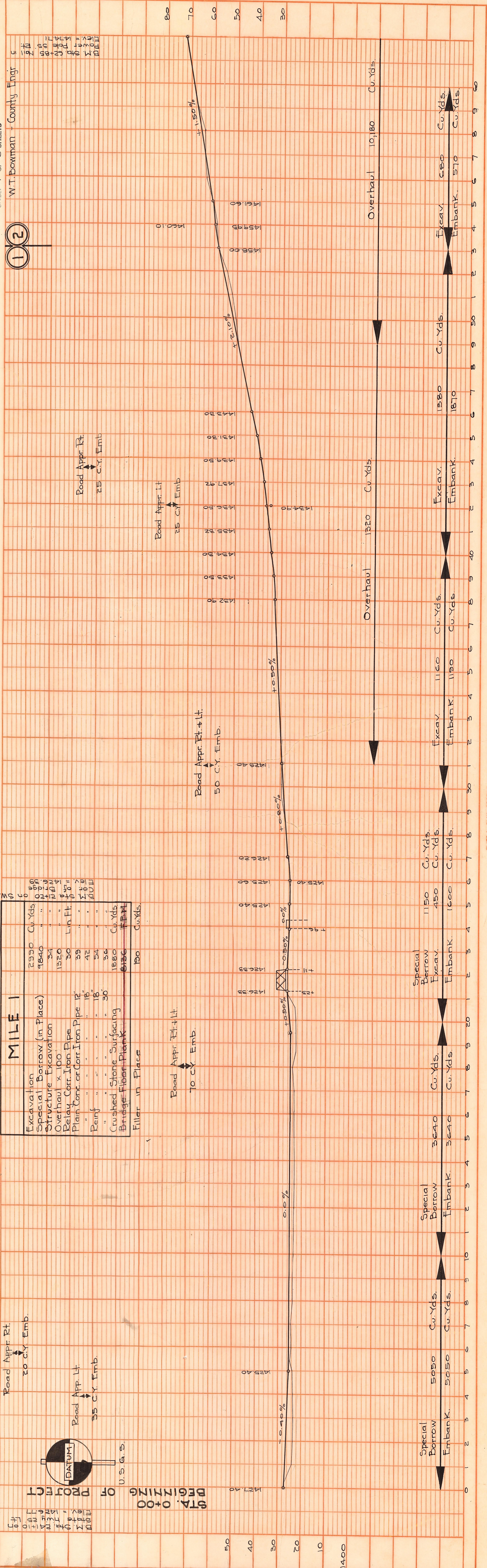
SHEET 1 OF 5 SHEETS

W.T. Bowman - County Engr



**MILE 1**

Excavation	2550	Cu. Yds.
Special Borrow (in Place)	9840	Cu. Yds.
Structure Excavation	34	Cu. Yds.
Overhaul x 100	1250	Cu. Yds.
Relay Corr. Iron Pipe	30	Lin. Ft.
Plain Conc. or Corr. Iron Pipe	39	Lin. Ft.
Paint	42	Lin. Ft.
"	54	Lin. Ft.
"	36	Lin. Ft.
Crushed Stone Surfacing	1800	Cu. Yds.
Bridge Floor Plank	8256	Sq. Ft.
Filler in Place	190	Cu. Yds.



**PLAN**

NO.	DATE
BY	
DATE	

W. T. BOWMAN  
County Engineer

**PROFILE**

NO.	DATE
BY	
DATE	