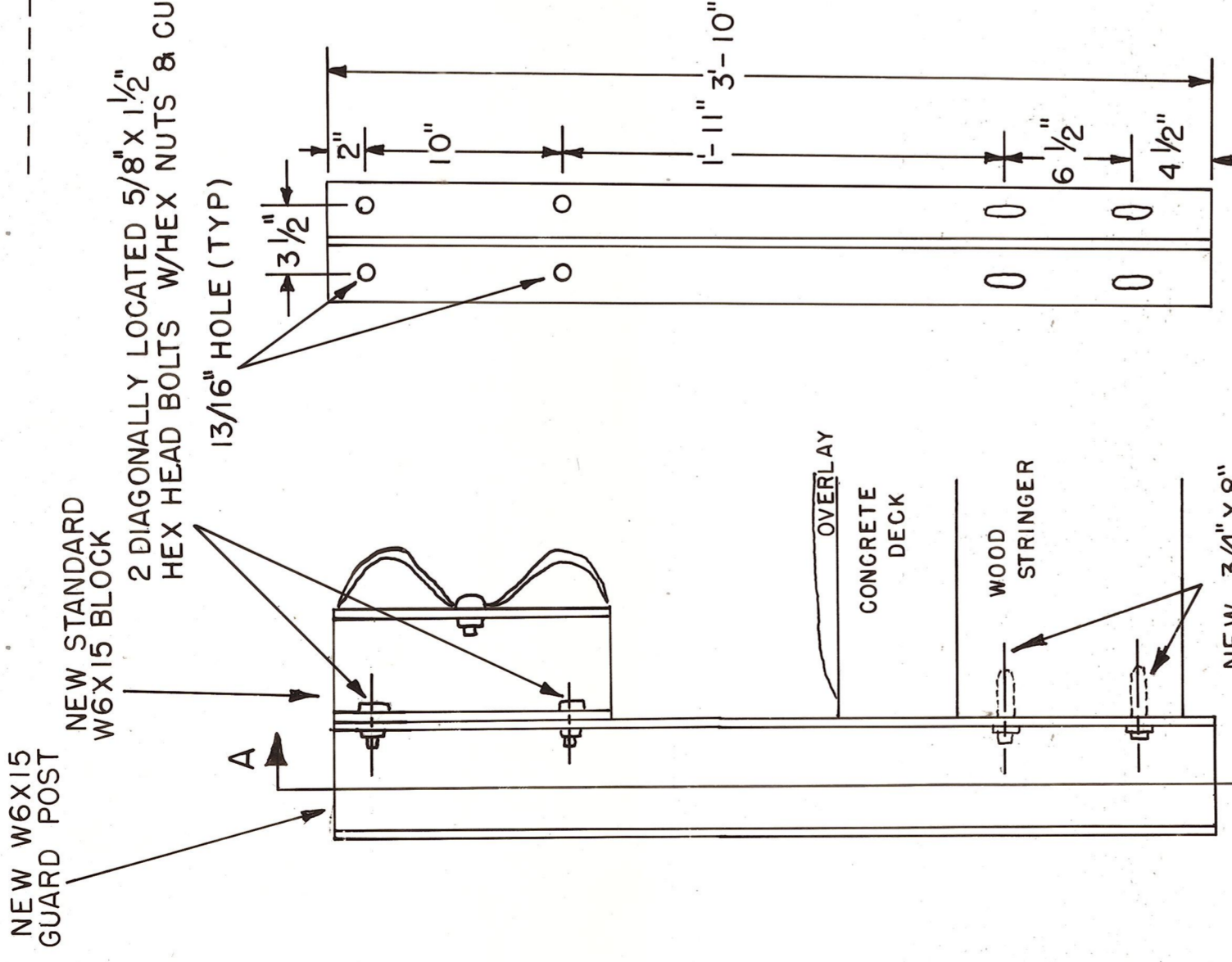
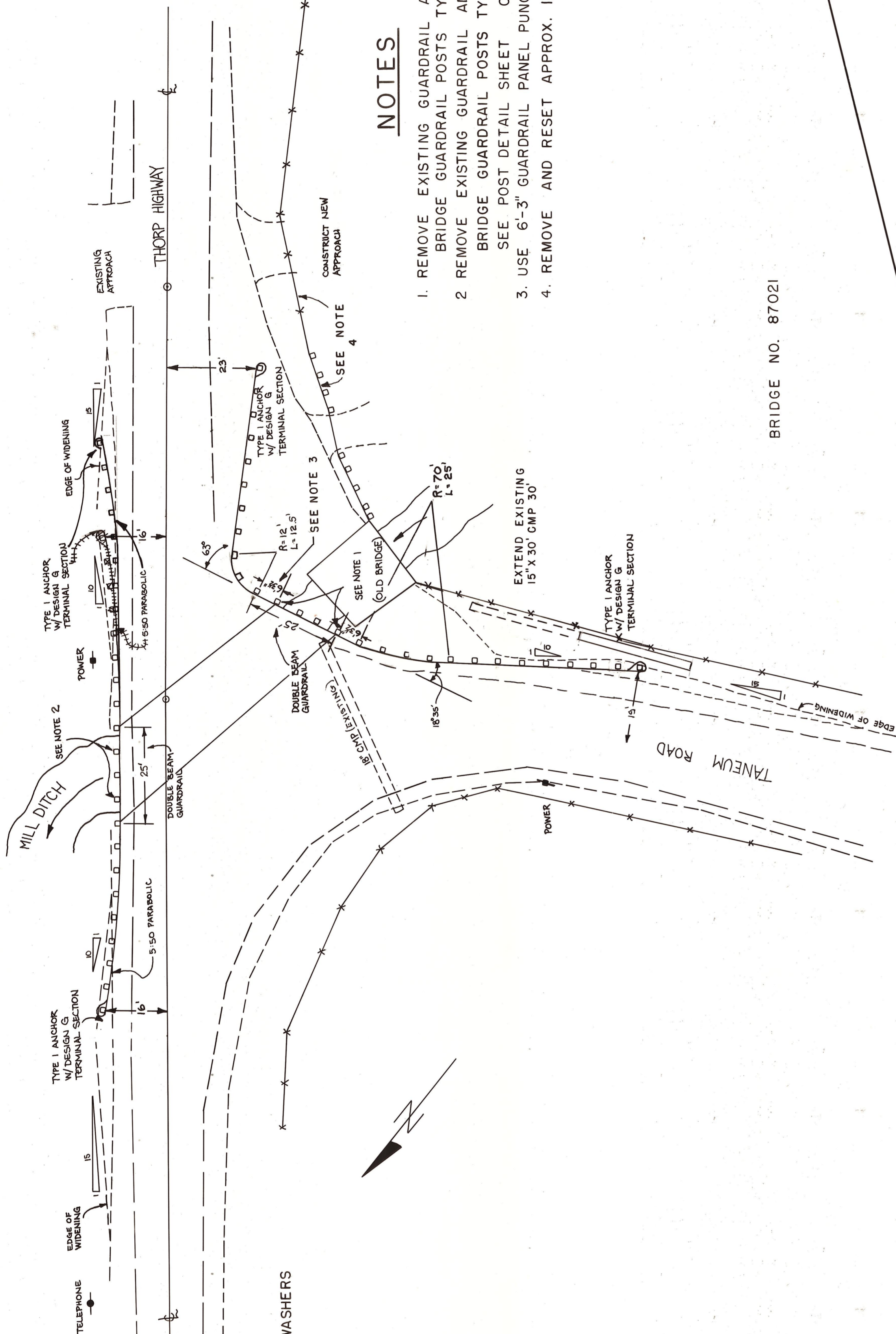


**QUANTITIES**

TYPE 1 GUARDRAIL INCLUDING TERMINAL SECTION 274.0 L.F.  
 DOUBLE BEAM GUARDRAIL 50.0 L.F.  
 BRIDGE GUARDRAIL POSTS 4 EACH  
 TYPE 2, INSTALLED 3 EACH  
 TYPE 4, INSTALLED 4 EACH  
 BEAM GUARDRAIL ANCHOR 56. C.Y.  
 TYPE 1 19 C.Y.  
 EMBANKMENT, IN PLACE 30 L.F.  
 SCHEDULE A 15" C.M.P.

**NOTES**

1. REMOVE EXISTING GUARDRAIL AND POSTS. INSTALL 4 EACH NEW W6X15 BRIDGE GUARDRAIL POSTS TYPE 2. 4 EACH AT EXISTING LOCATIONS
2. REMOVE EXISTING GUARDRAIL AND POSTS. INSTALL 3 EACH NEW W6X15 BRIDGE GUARDRAIL POSTS TYPE 4. 3 EACH IN LOCATIONS TO BE STAKED BY THE ENGINEER. SEE POST DETAIL SHEET OF
3. USE 6'-3" GUARDRAIL PANEL PUNCHED 6'-3"
4. REMOVE AND RESET APPROX. 116 L.F. OF EXISTING FENCE AND 1 GATE

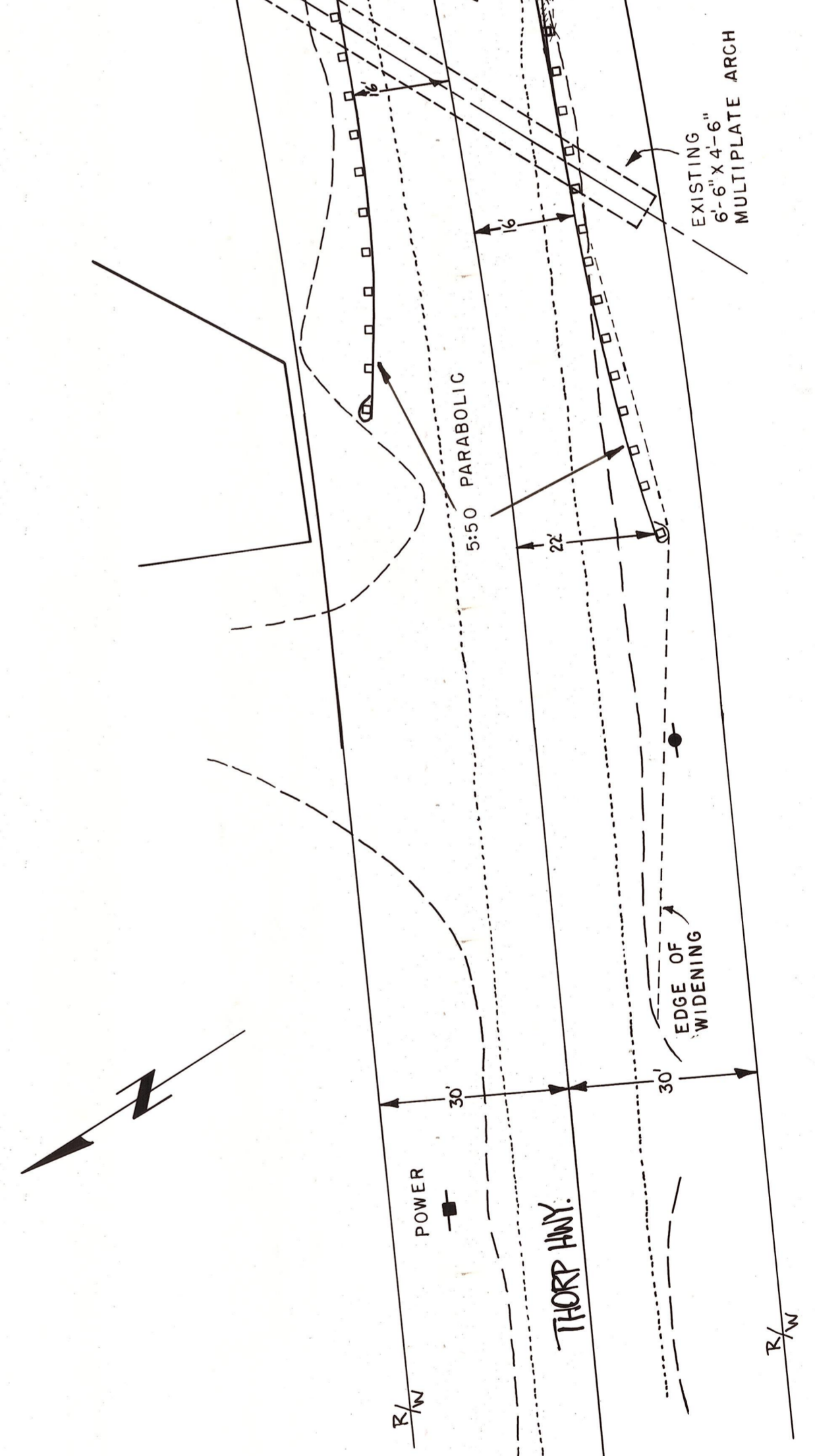


BRIDGE GUARDRAIL POST TYPE 2 SCALE 1/2" = 1'-0"

PIPE ARCH THORP HWY. MILL RACE CREEK

**QUANTITIES**

TYPE 1 GUARDRAIL INCLUDING TERMINAL SECTIONS 274.0 L.F.  
 BEAM GUARDRAIL ANCHOR 56. C.Y.  
 EMBANKMENT, IN PLACE 30 L.F.  
 TOP COURSE, IN PLACE 19 C.Y.



**NOTES**

- USE 6" X 8" TREATED TIMBER POSTS AND BLOCKS

TYPE 1 ANCHOR WIDENING SECTION (TYP) TERMINAL SECTION

EXISTING 6" X 4" - 6" MULTIPLE ARCH

AS BUILT

DEPT. OF PUBLIC WORKS

KITITAS COUNTY  
 ELLENSBURG, WASHINGTON

No. THORP HIGHWAY  
 BRIDGE #87021 (MILL RACE CREEK)  
 PIPE ARCH (MILL RACE CREEK)

SCALE: 1" = 20' CRP 54-84

DRAWN BY JN DATE 6-29-84 SHEET 6 OF 10

APPROVED: 2/1/85 DATE

DIRECTOR, DEPARTMENT OF PUBLIC WORKS

