

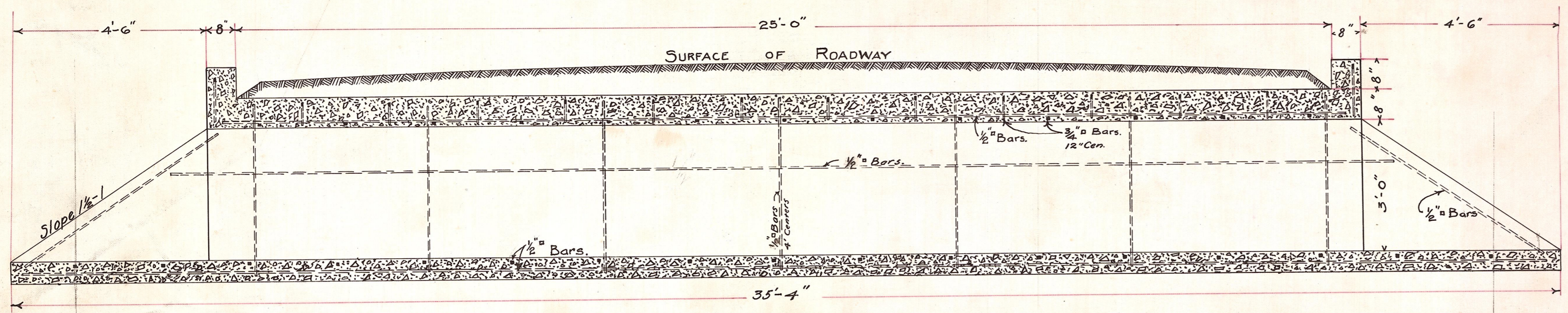
TOP VIEW.

SSH 3M

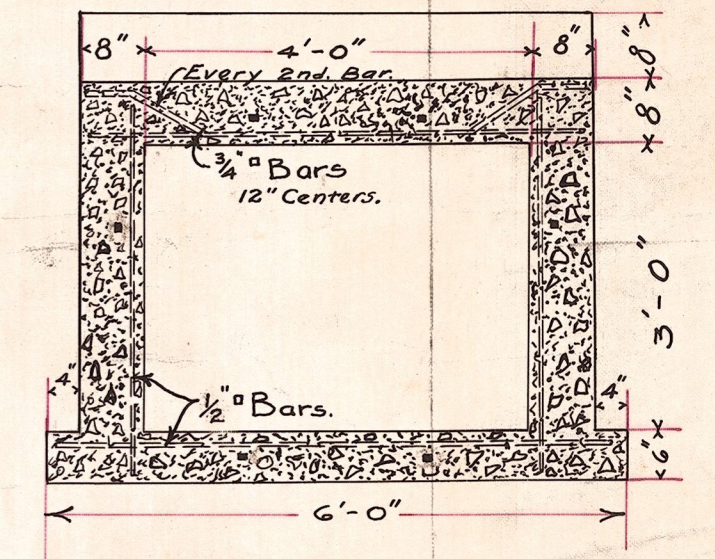
KITTITAS COUNTY,
WASHINGTON.

PLAN OF CONCRETE CULVERT
ON PERMANENT HIGHWAY No. 1.
ELLENSBURG, Wash. JUNE 24, 1912.
Scale: 1 in. = 2 ft.

Correct: _____ Approved: _____
Chas. T. Jordan _____
 County Engineer. Highway Comm'r.



LONGITUDINAL SECTION.



CROSS-SECTION.

450 lbs. Steel