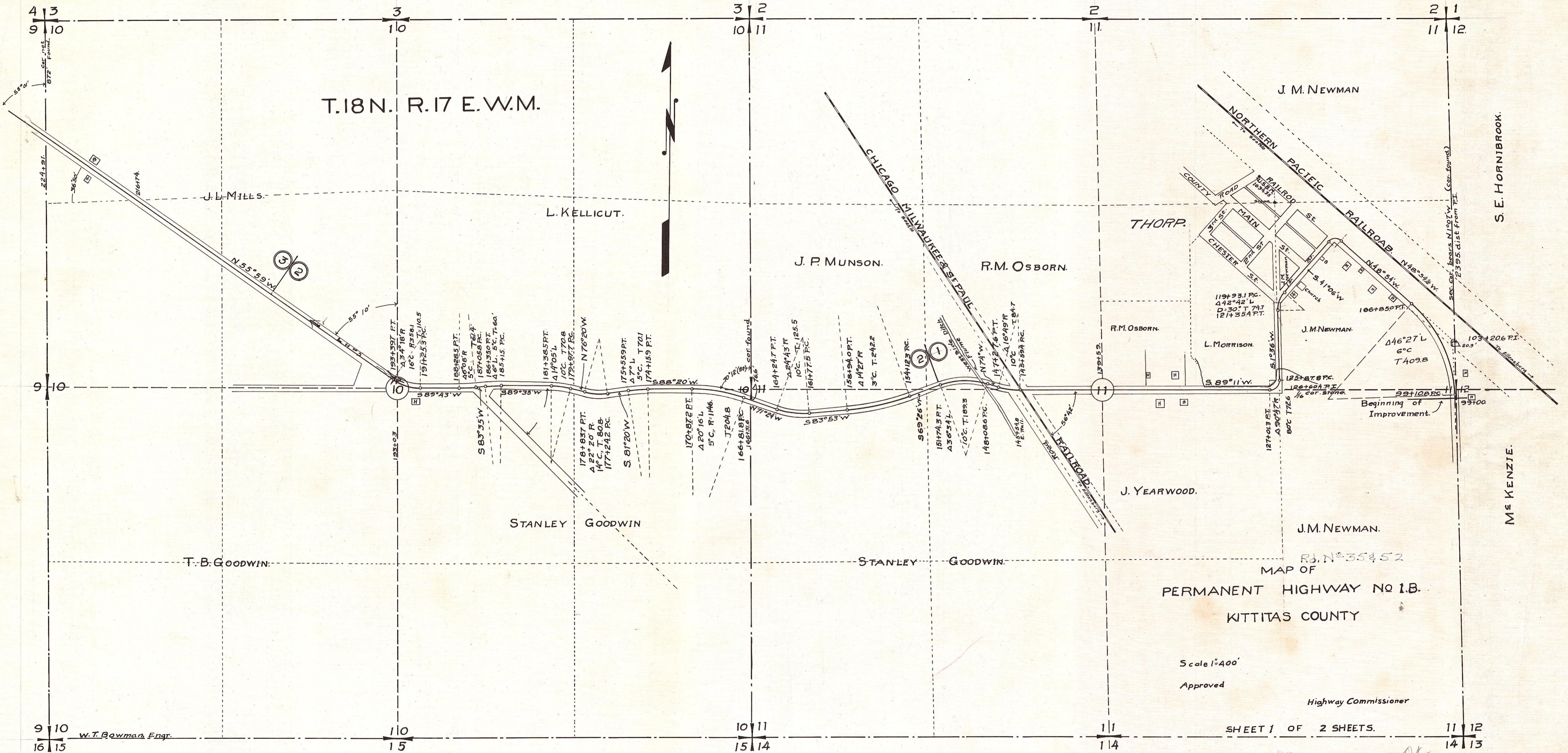


T.18N. R.17 E.W.M.



MAP OF
 PERMANENT HIGHWAY NO 1.B.
 KITTITAS COUNTY

Scale 1"=400'
 Approved
 Highway Commissioner

SHEET 1 OF 2 SHEETS.

Approved FEB 19 1911
 (Section 7, Chapter 35, Laws 1911)
S. S. Parak
 State Highway Commissioner