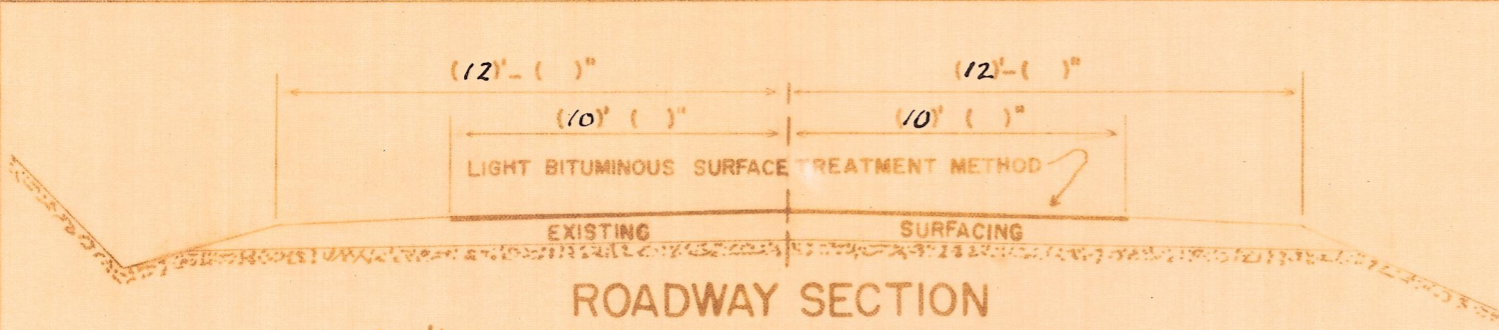


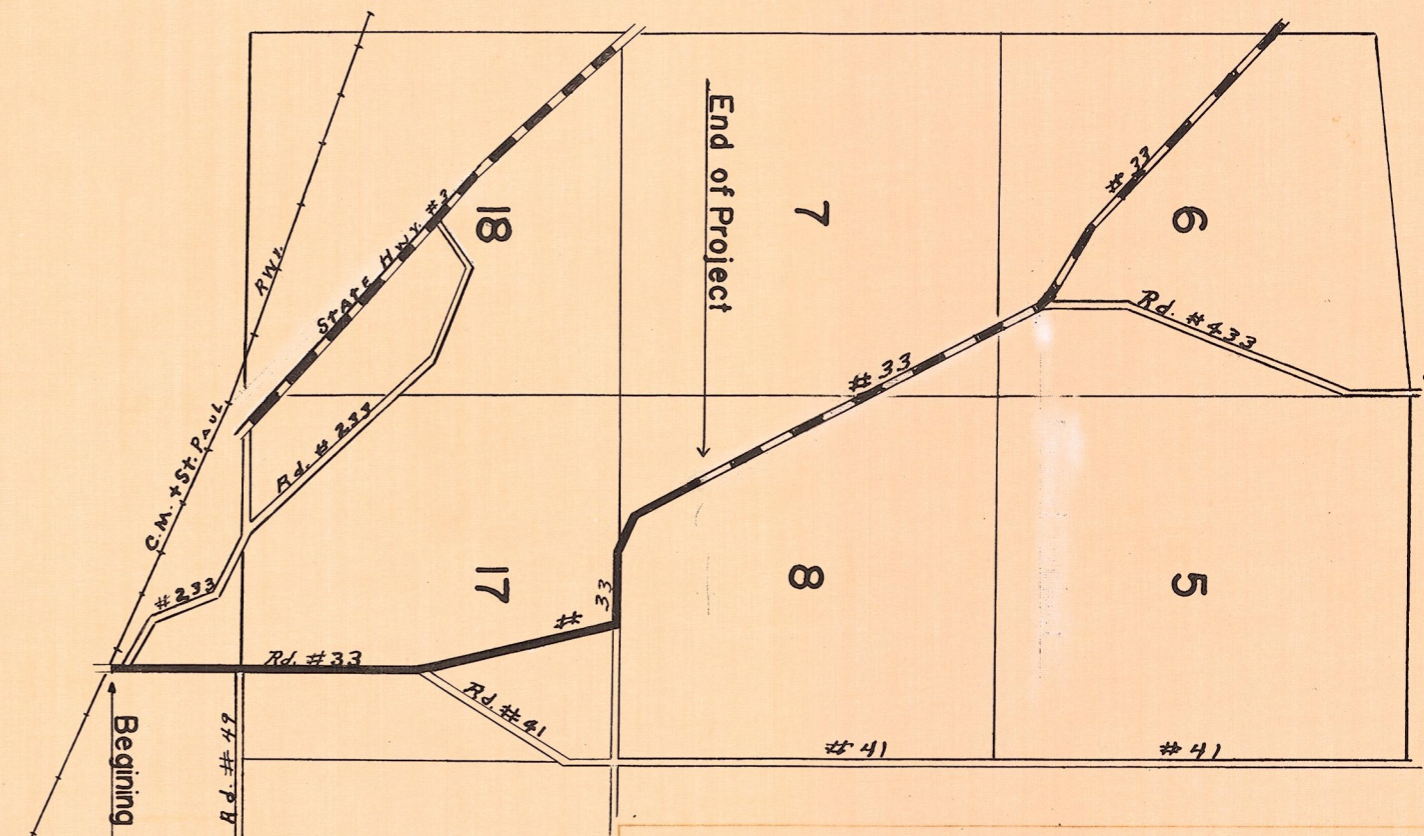
C
~~5-24-42~~
 13-6-4



ROADWAY SECTION
 (20) LIGHT BITUMINOUS SURFACE TREATMENT
 M.P. 0.0 TO M.P. 2.0

NOTE; TREATED SURFACE TO BE SUPERELEVATED AND WIDEND ON CURVES

M.P. 0.0 TO M.P. 2		SUMMARY OF QUANTITIES				LENGTH 10560 LIN. 2 MILE
SECTION	LIGHT BITUMINOUS SURFACE TREATMENT					
	PREPARATION CONSTRUCTION AND FINISHING	BITUMINOUS CEMENT	COVER STONE	WATER		
	Miles	Tons	Cu. Yd.	M. Gals.		
1	2	30	260			



TOWNSHIP 18 N., RANGE 18 E. W.M.

SPECIAL PROVISION NOTES:

The State Standard Plans and Specifications for Bituminous Surface Treatment Shall obtain in all respects except as follows;
 Cover Stone shall be Crushed Rock, 3/4" to 0"
 Rate of application of Bituminous Cement is .30 Gallons per. Sq.Yd.

COUNTY ROAD PROJECT No. 53
 ROAD No. 33
 KITTITAS COUNTY, WASHINGTON

H. J. Deimbolt
 County Road Engineer
 Approved: 5-24-1942
S. W. Brown
 Chairman, Board of County
 Comm.
 Sheet ___ of ___ Sheets