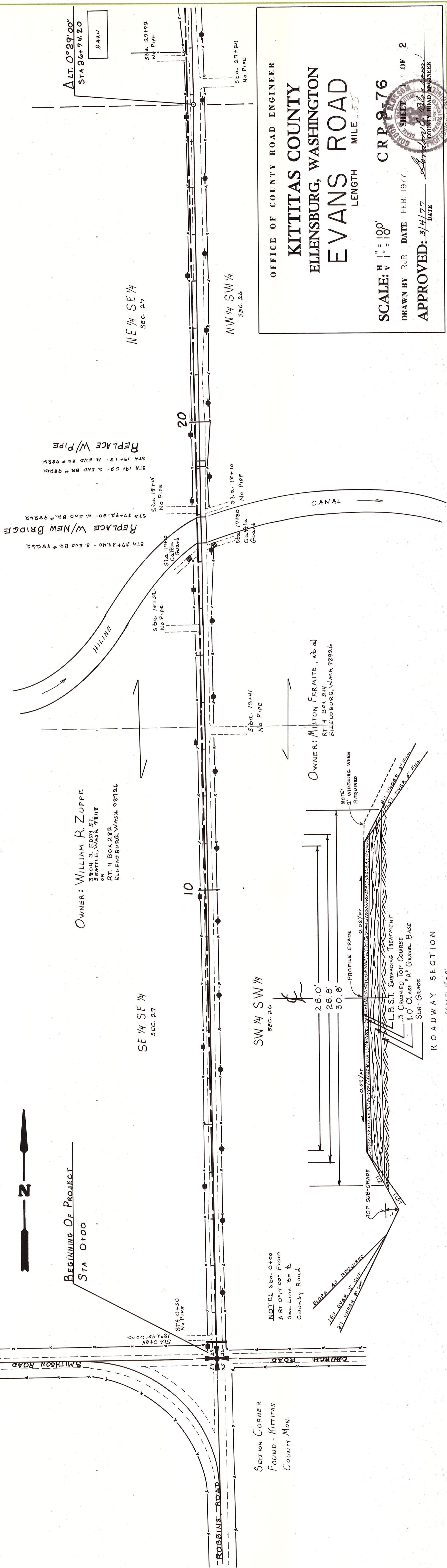


T. 19N R. 18E, W.M.  
SEC. 26-27



OFFICE OF COUNTY ROAD ENGINEER  
**KITTITAS COUNTY**  
ELLENSBURG, WASHINGTON  
**EVANS ROAD**  
LENGTH MILE .55

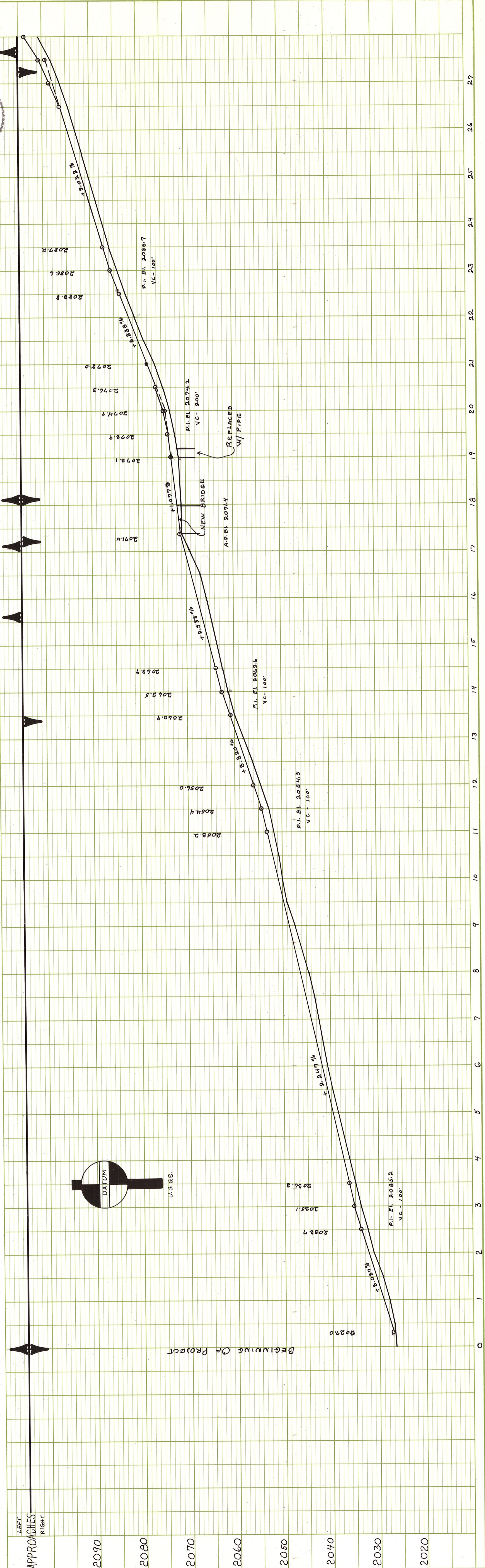
SCALE: H 1" = 100'  
V 1" = 10'

CRP 9-76 OF 2

DRAWN BY RJR DATE FEB. 1977

APPROVED: 3/11/77 DATE

SEAL: L. BRIDSON, COUNTY ROAD ENGINEER



PLAN

DATE	BY

REVISIONS

NO.	DATE	BY	REVISION

NOTE BOOK  
R. 1.5 NOTED  
ALIGNMENT CHECKED  
PLOTTED  
DATE

PROFILE

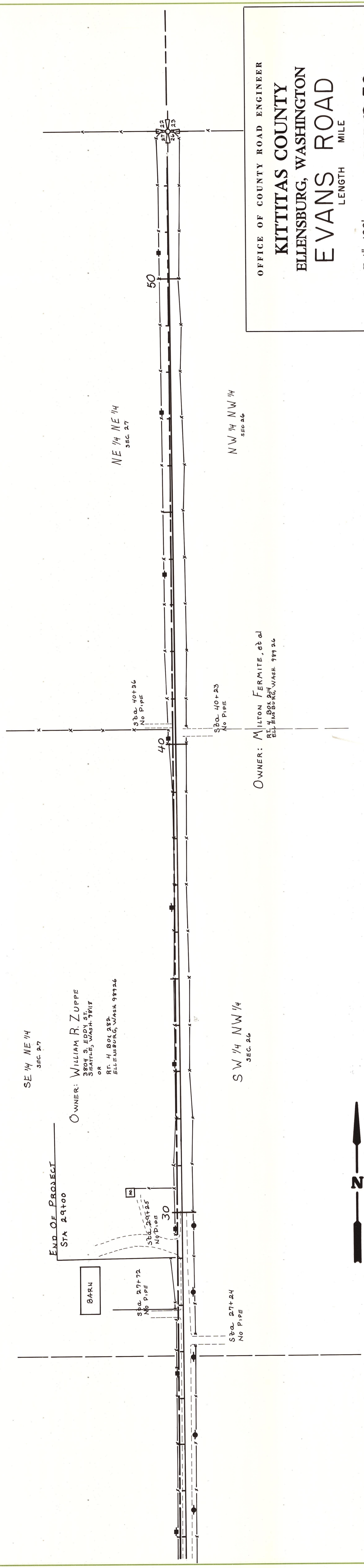
DATE	BY

REVISIONS

NO.	DATE	BY	REVISION

NOTE BOOK  
R. 1.5 NOTED  
GRADES CHECKED  
PLOTTED  
DATE

T. 19 N. R. 18 E., W.M.  
SEC. 26-27



OFFICE OF COUNTY ROAD ENGINEER  
KITITAS COUNTY  
ELLENSBURG, WASHINGTON  
**EVANS ROAD**  
LENGTH MILE

SCALE: H" = 100'  
V" = 10'

CR 1976

DRAWN BY RJR DATE FEB. 1977

APPROVED: 2/1/77 DATE

2 OF 2



NO.	DATE	BY

PLAN

REVISIONS

DATE

BY

NOTE BOOK

ALIGNED CHECKED

RT. OF WASH. CHECKED

NO.	DATE	BY

PROFILE

REVISIONS

DATE

BY

NOTE BOOK

GRADES CHECKED

STRUCTURE NOTATIONS CHECKED