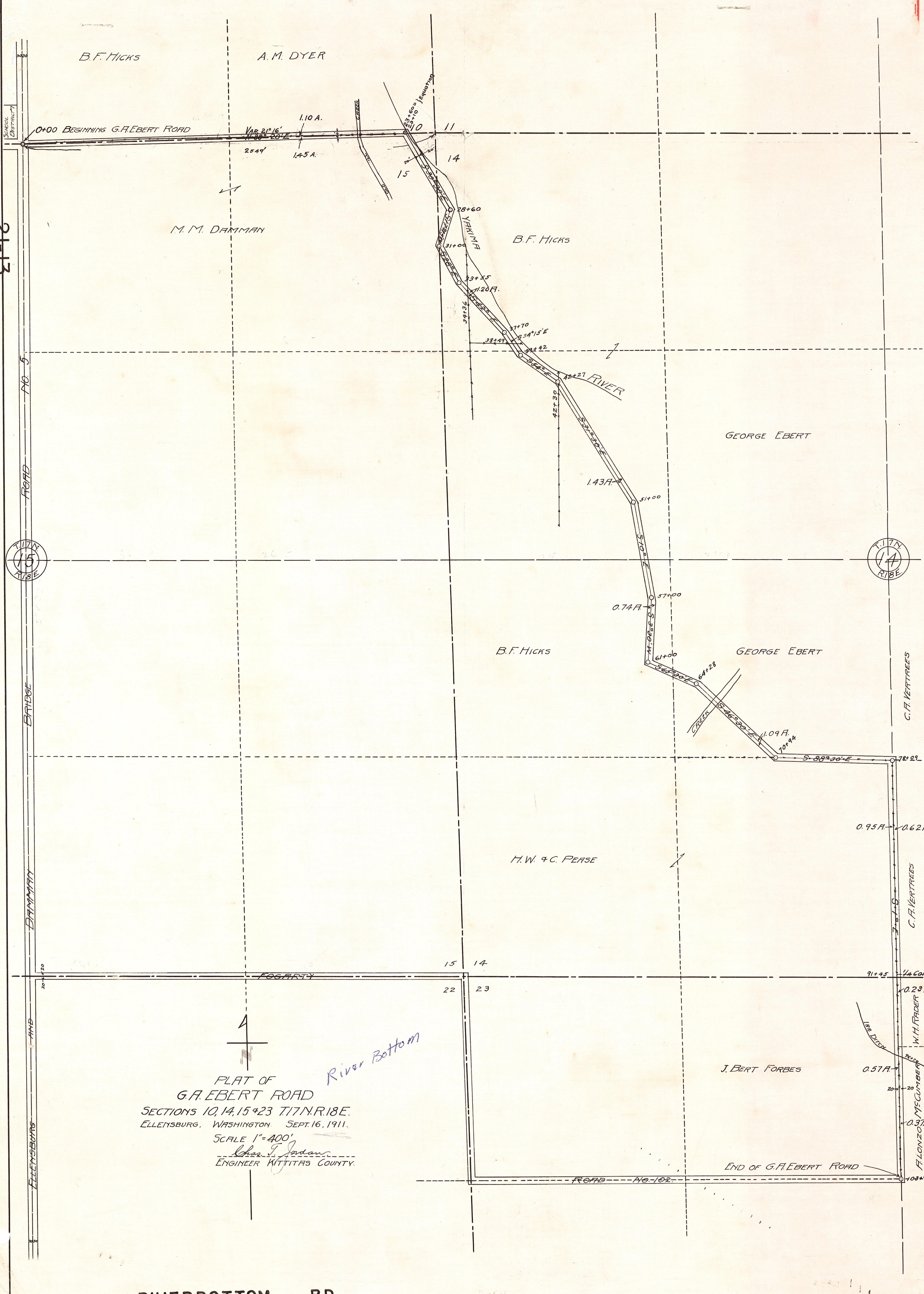


21-12

1-2-05



B.F. Hicks

A.M. DYER

M.M. DAMMAN

B.F. Hicks

GEORGE EBERT

B.F. Hicks

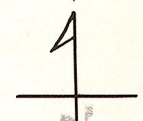
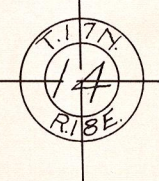
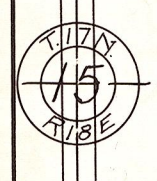
GEORGE EBERT

H.W. & C. PEASE

J. BERT FORBES

PLAT OF
 G.A. EBERT ROAD
 SECTIONS 10, 14, 15 & 23 T17N. R18E.
 ELLENSBURG, WASHINGTON. SEPT. 16, 1911.
 SCALE 1" = 400'
 Chas. T. Jordan
 ENGINEER WYTHS COUNTY.

RIVERBOTTOM RD.



River Bottom

C.F. VERTREES

C.F. VERTREES

W.H. RADER

F. LONZO M'CUMBER

103+92

SCHOOL DISTRICT

ROAD No. 5

BRIDGE

DAMMAN

AND

ELLENSBURG

ROAD No. 102

END OF G.A. EBERT ROAD

0.23 A.

0.37 A.

0.57 A.

1/4 COR.

91+45

0.95 A.

0.62 A.

78+09

0.74 A.

1.43 A.

1.20 A.

1.10 A.

1.45 A.

25+49

15

14

11

15

14

22

23

26

25

24

20+120

20+120

20+120

20+120

20+120

20+120

20+120

20+120

20+120

20+120

20+120

20+120

20+120

20+120