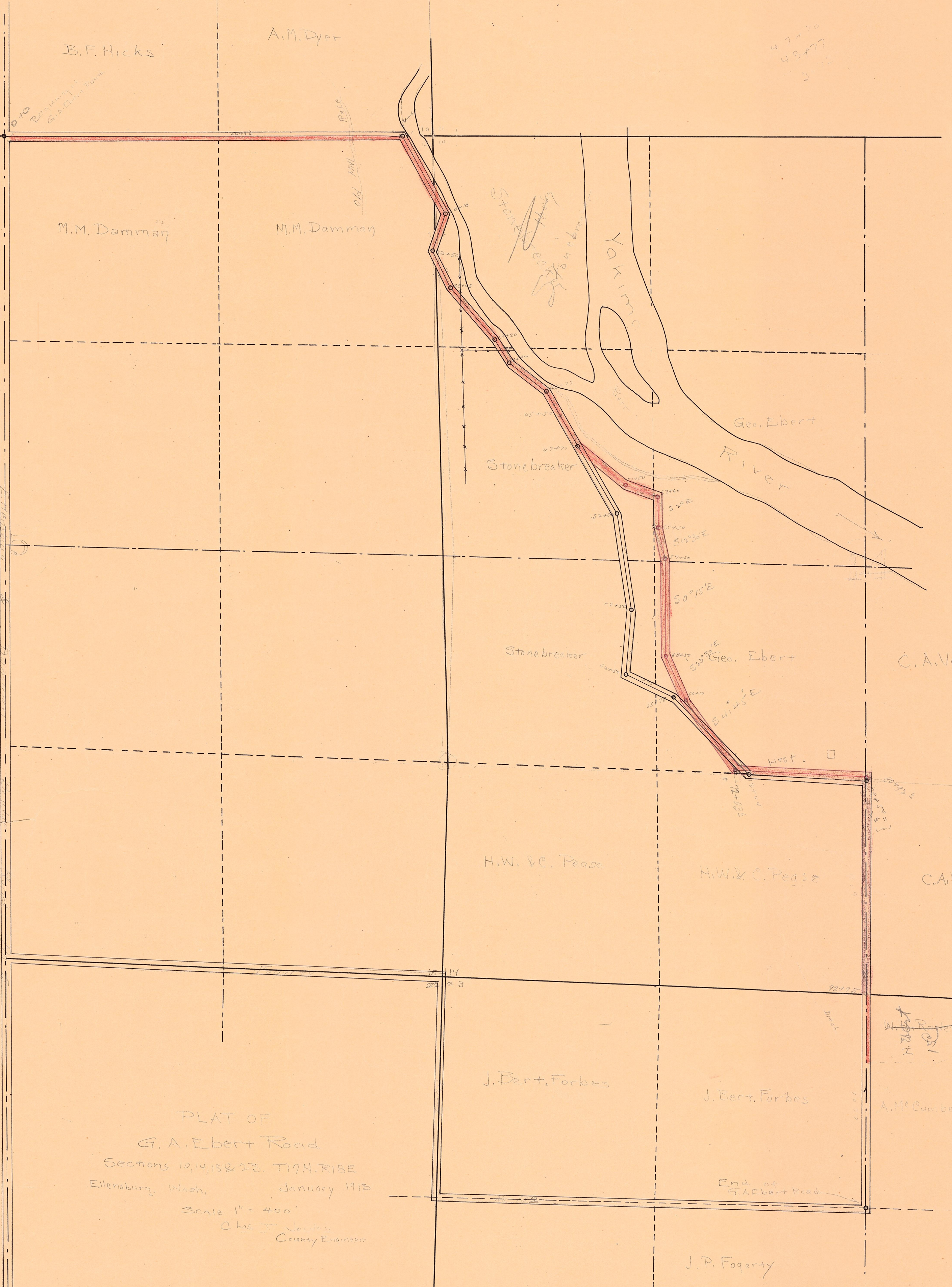


15-6-4

21-14



PLAT OF
 G. A. Ebert Road
 Sections 10, 14, 15 & 23, T17N, R18E
 Ellensburg, Wash. January 1913
 Scale 1" = 400'
 Chas. T. Jones
 County Engineer

Note: Right of Way secured
 Showing thus - ■

50-8-1

E-1 G.A. Ebert Road

RIVERBOTTOM RD.