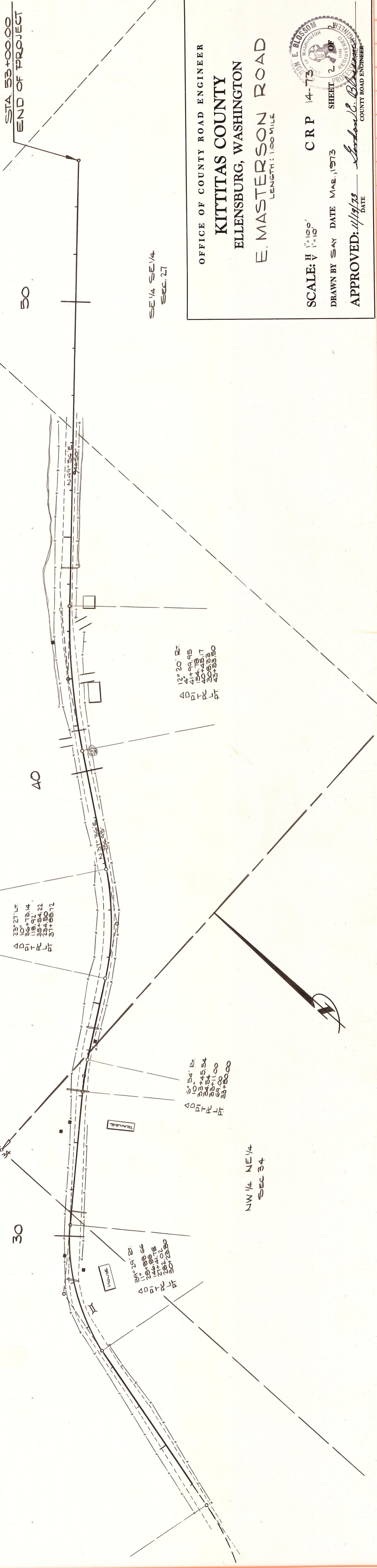


T. 20 N. R. 16 E. W.M.
SEC. 27

NE 1/4 NW 1/4
SEC. 34

SW 1/4 SE 1/4
SEC. 27

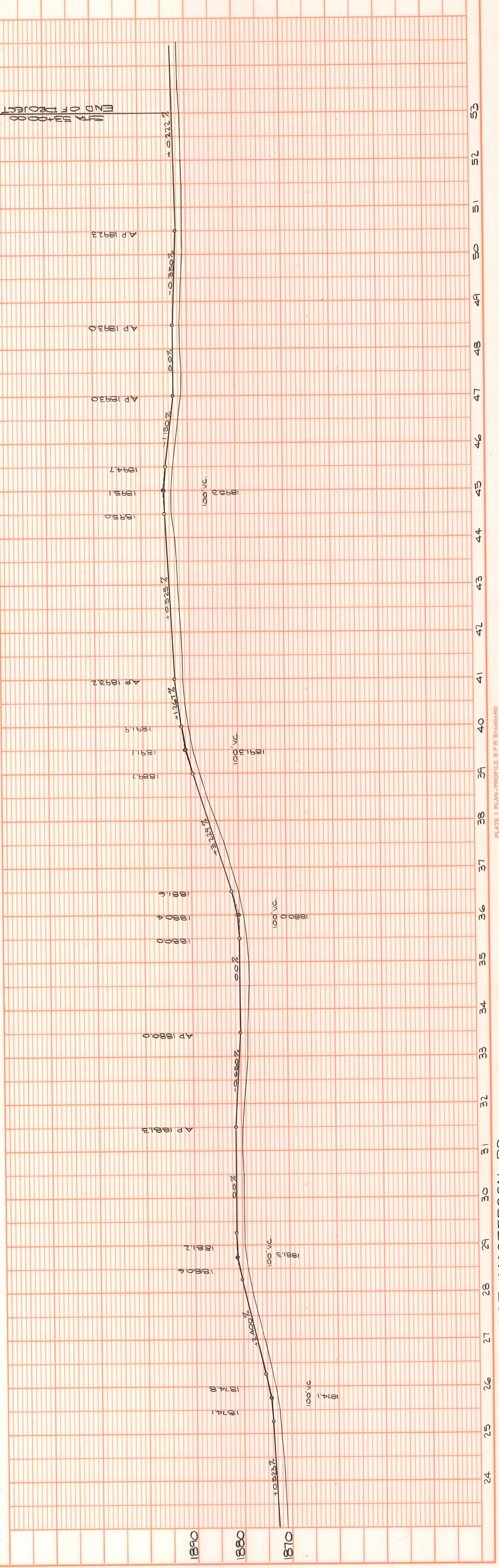


OFFICE OF COUNTY ROAD ENGINEER
KITITAS COUNTY
ELLENSBURG, WASHINGTON
E. MASTERSON ROAD
LENGTH: 1.00 MILE

SCALE: H 1"=100'
V 1"=10'
CRP 14-73

DRAWN BY SAY DATE MAR. 11 '73 SHEET 2 OF 2

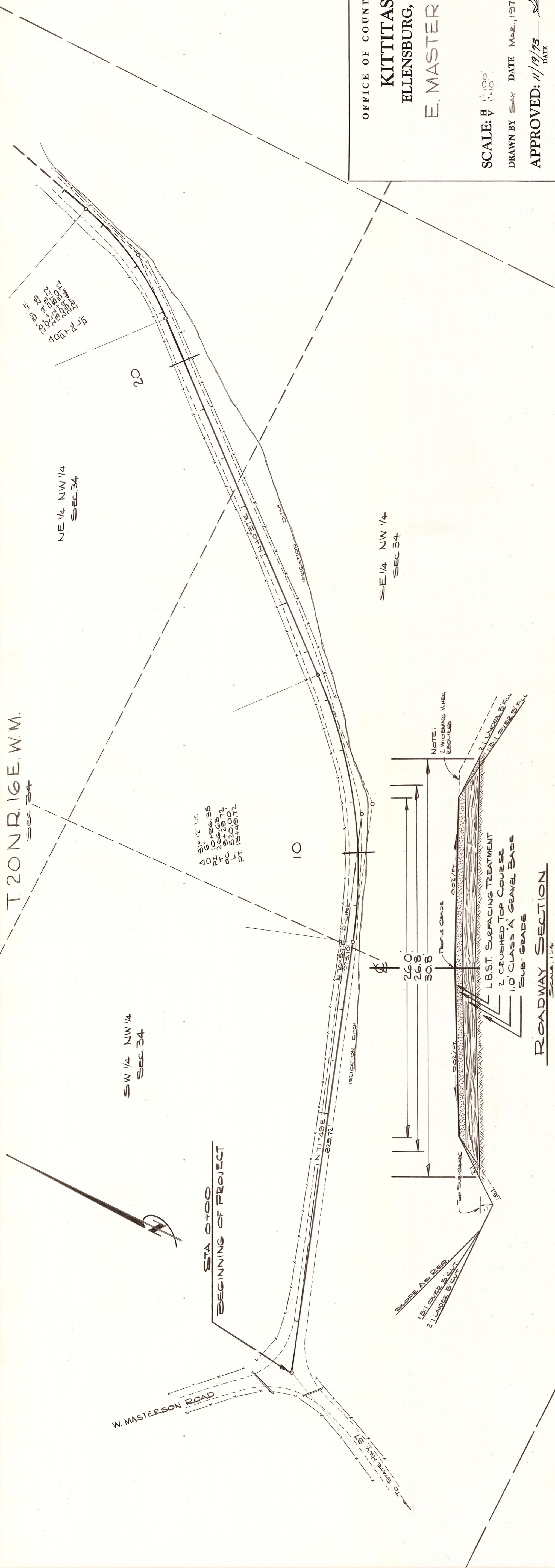
APPROVED: *E. Blossom* DATE 4/19/73
COUNTY ROAD ENGINEER



| PLAN | |
|-----------------|----|
| DATE | BY |
| REVISIONS | |
| NOTED | |
| ALIGNED CHECKED | |
| BY | |

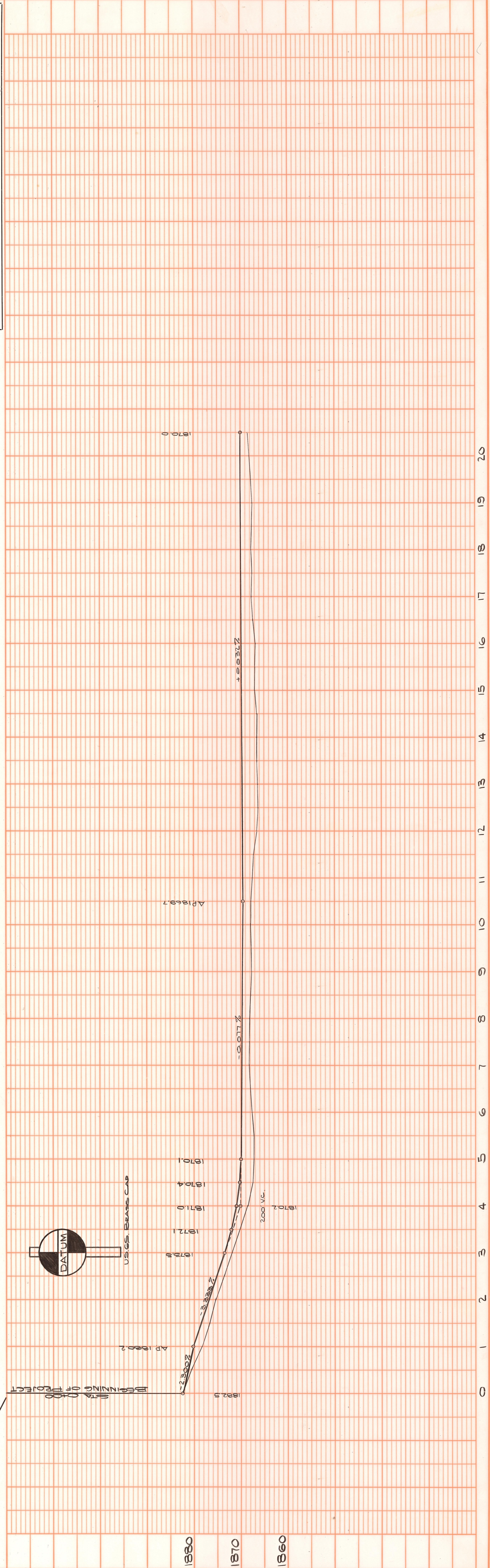
| PROFILE | |
|----------------|----|
| DATE | BY |
| REVISIONS | |
| NOTED | |
| GRADES CHECKED | |
| BY | |

T 20 NR 16 E. W.M.



OFFICE OF COUNTY ROAD ENGINEER
KITTITAS COUNTY
 ELLENSBURG, WASHINGTON
E. MASTERSON ROAD

SCALE: $\frac{1}{2}$ " = 100'
 DRAWN BY SAY DATE MAR., 1973
 APPROVED: *L. E. Robinson*
 COUNTY ROAD ENGINEER



PLAN

| | | |
|-----|------|----|
| NO. | DATE | BY |
| | | |
| | | |
| | | |
| | | |

NOTE BOOK
 ALIGNED CHECKED
 PLOTTED
 SUBMITTED

PROFILE

| | | |
|-----|------|----|
| NO. | DATE | BY |
| | | |
| | | |
| | | |
| | | |

NOTE BOOK
 GRADES CHECKED
 NOTES
 REVISIONS NOTATIONS CHECKED