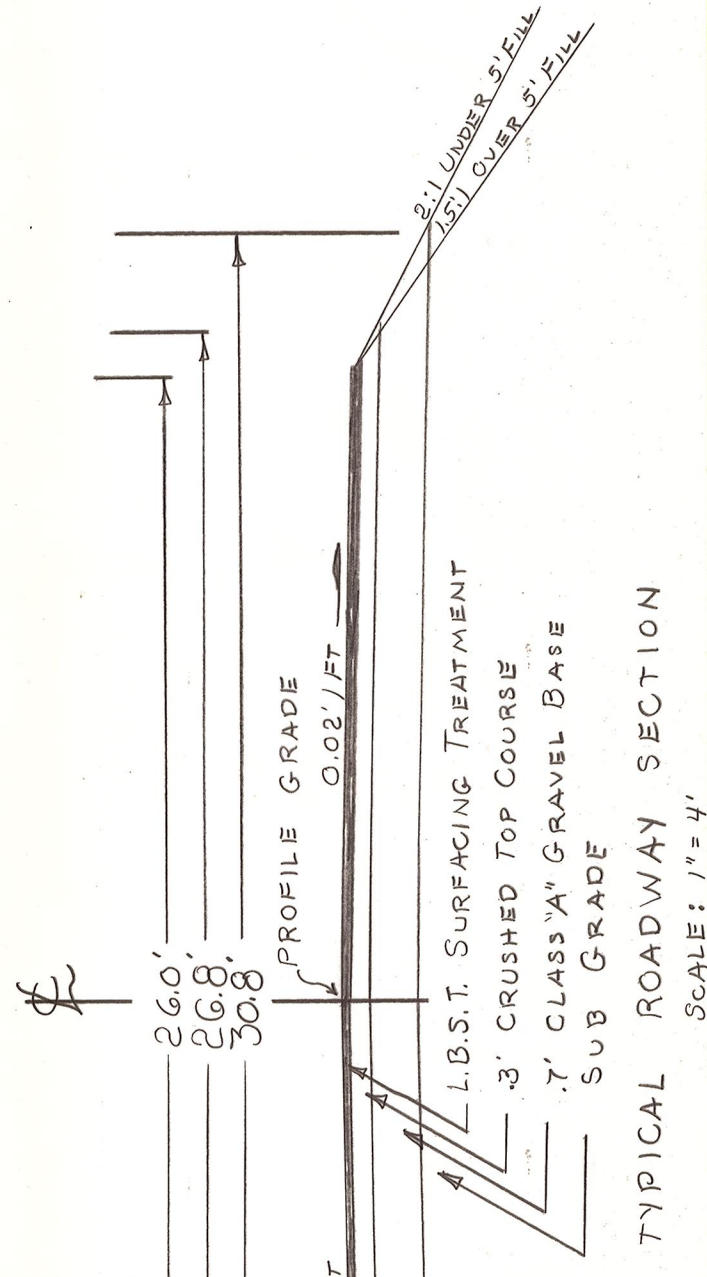
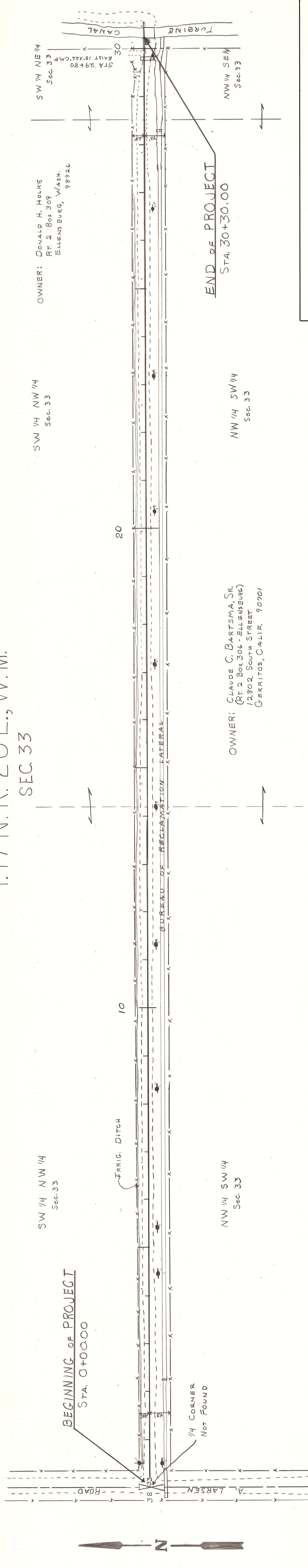


T.17 N.R. 20E., W.M.
SEC. 33

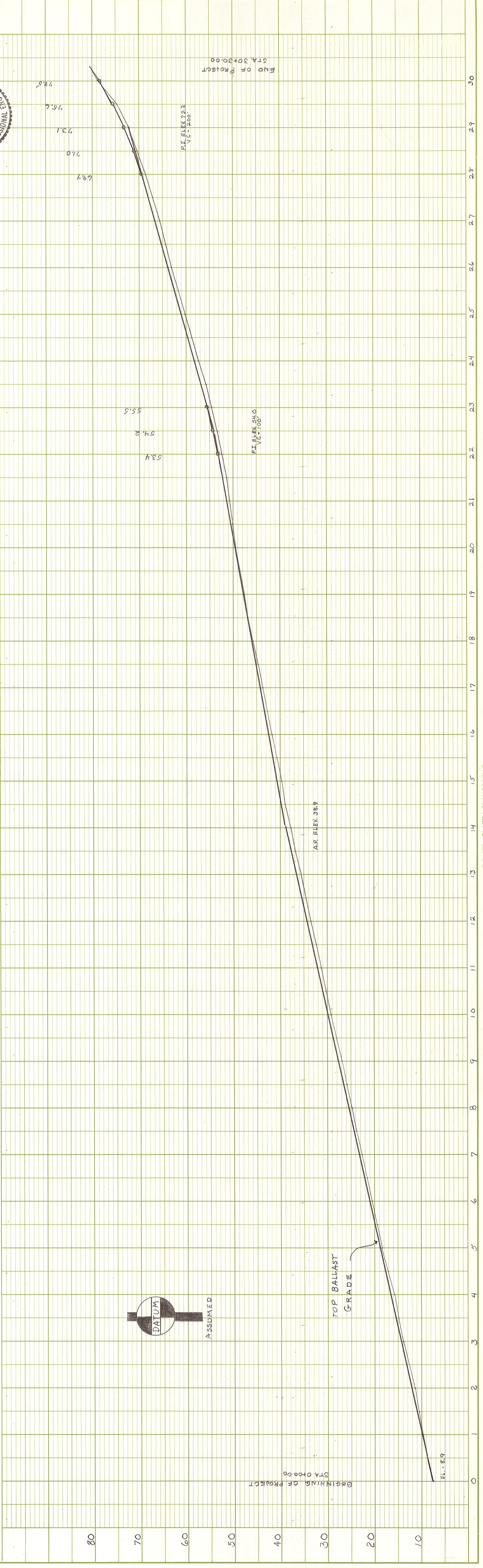


OFFICE OF COUNTY ROAD ENGINEER
KITTITAS COUNTY
ELENSBURG, WASHINGTON
PUMPING PLANT RD.
 LENGTH: .57 MILE

SCALE: H $1'' = 100'$
 V $1'' = 50'$
 CR P. 5-76

DRAWN BY R.R. DATE JAN. 1976
 APPROVED: *[Signature]* DATE 1/13/76

[Professional Engineer Seal]



PLAN	
DATE	BY
SURVED	
NOTE BOOK	
ALIGNMENT CHECKED	
RT. OF WAY CHECKED	

PROFILE	
DATE	BY
SURVED	
NOTE BOOK	
GRADES CHECKED	
E.M. NOTED	
STRUCTURE NOTATIONS CHECKED	