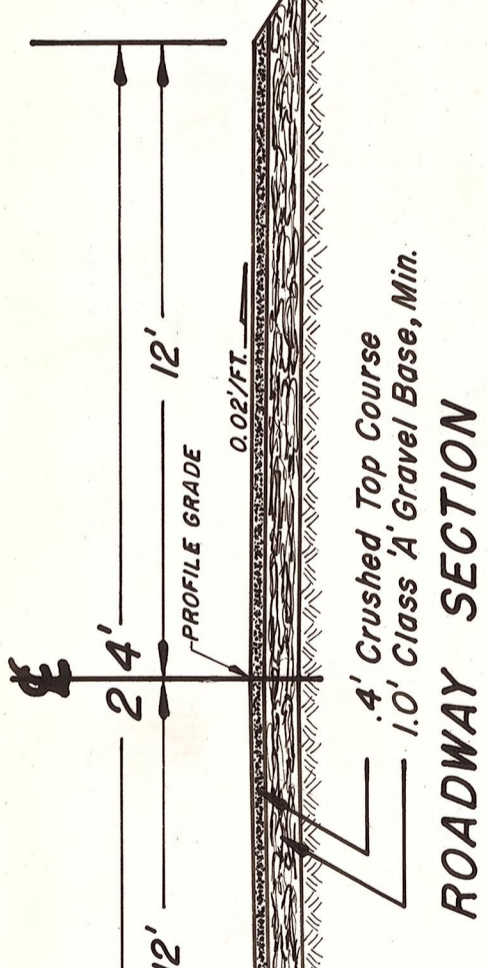
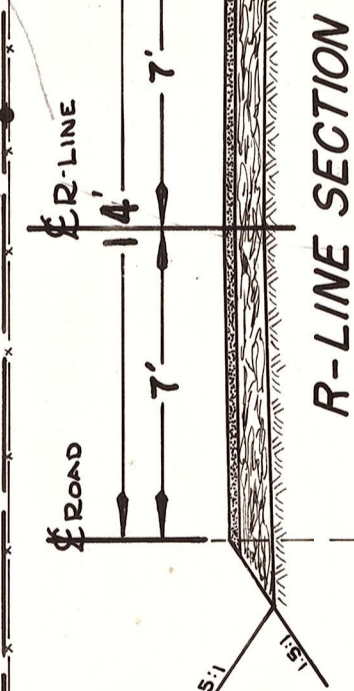
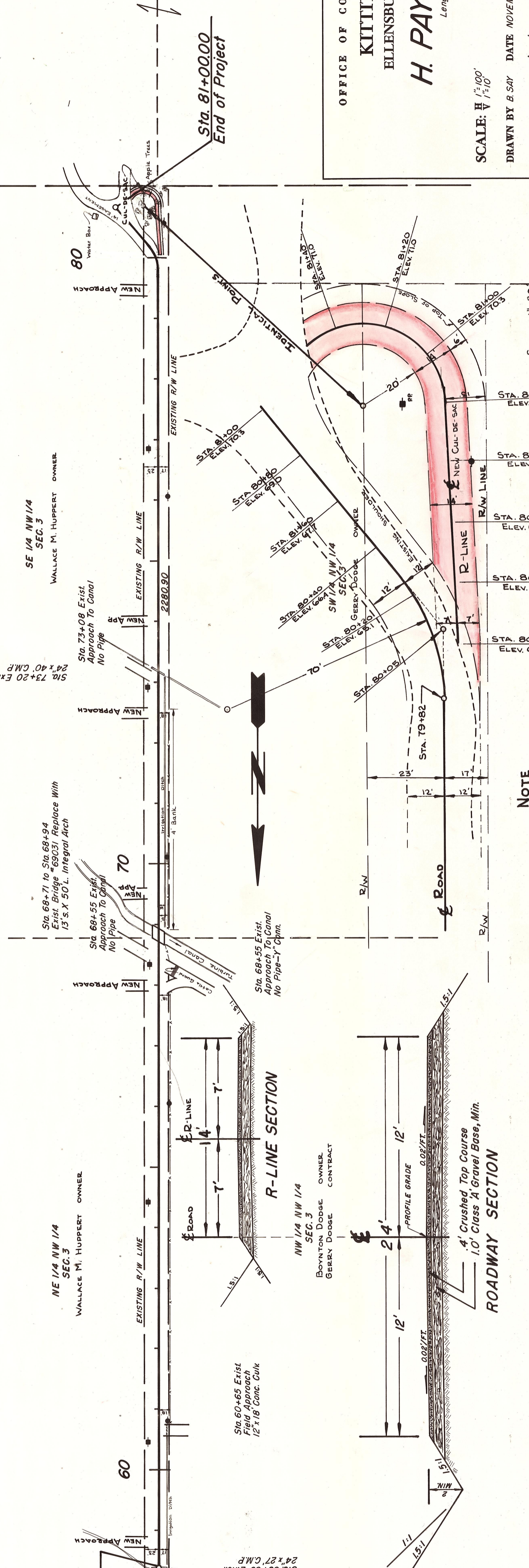


T. 16 N. R. 19 E. W.M.
SEC. 3

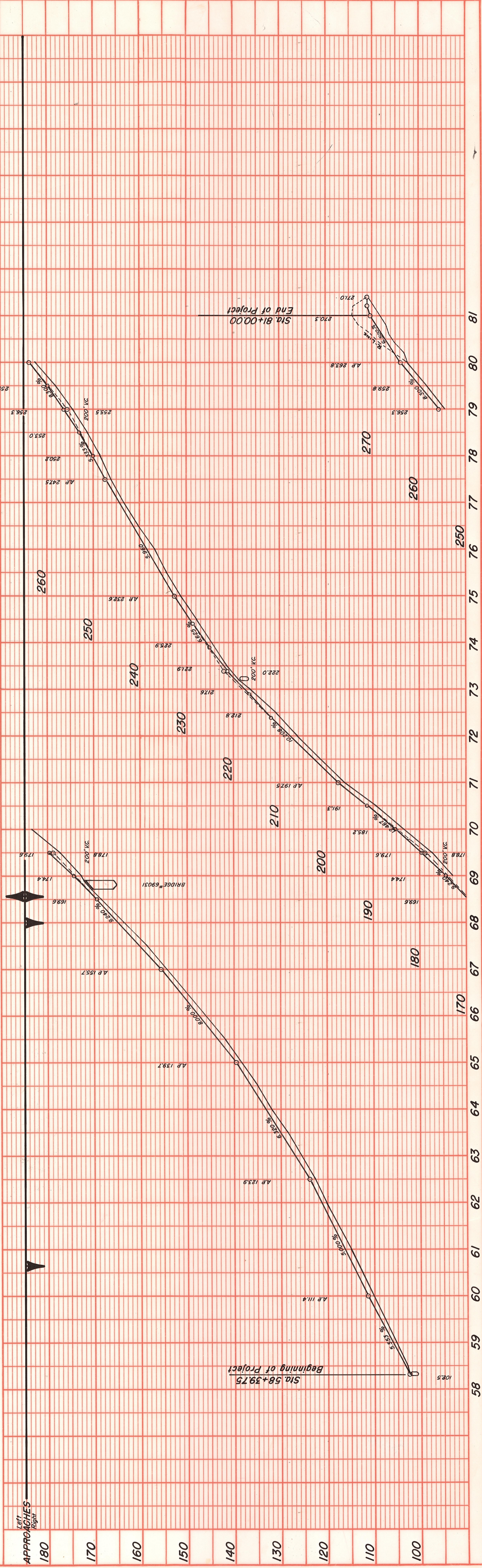
Sta. 58+39.75
Beginning of Project
(End of Previous Construction)

Sta. 81+00.00
End of Project



OFFICE OF COUNTY ROAD ENGINEER
KITITAS COUNTY
ELLENSBURG, WASHINGTON
H. PAYNE ROAD
Length - 0.43 mile

SCALE: $\frac{1}{2}'' = 100'$
DRAWN BY B.SAY DATE NOVEMBER, 1970 SHEET 1 OF 1
APPROVED: *Robert G. Diefenbach* COUNTY ROAD ENGINEER



NO.	DATE	BY

NO.	DATE	BY