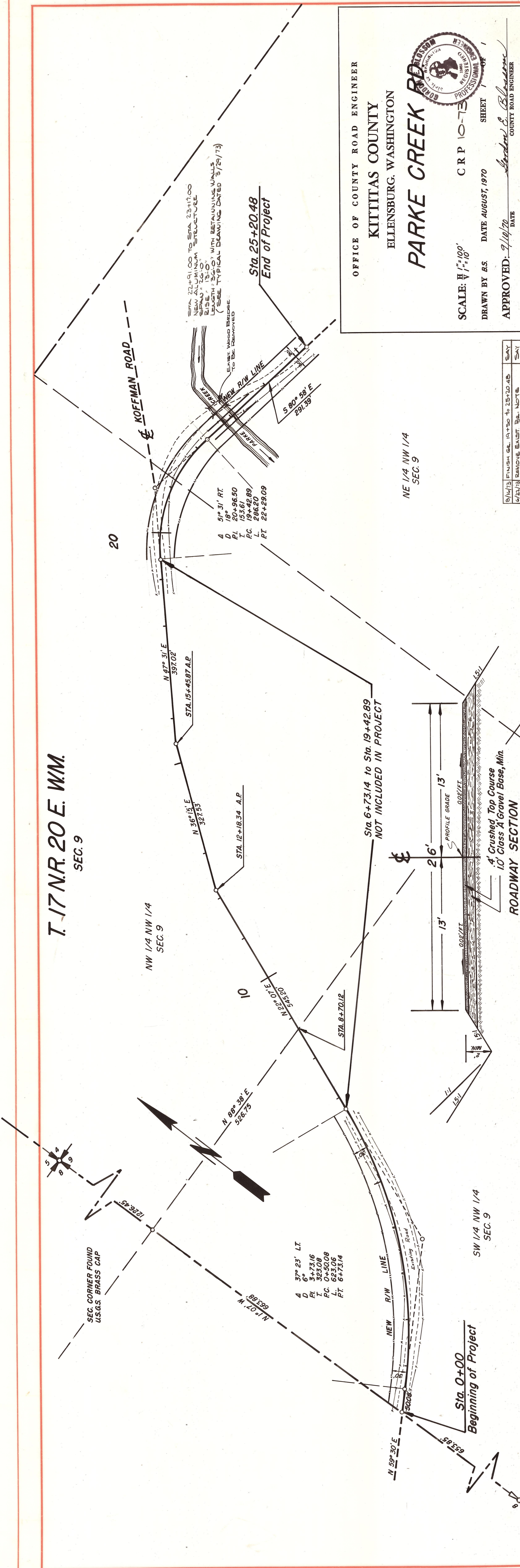


T. 17 N.R. 20 E. WM.
SEC. 9

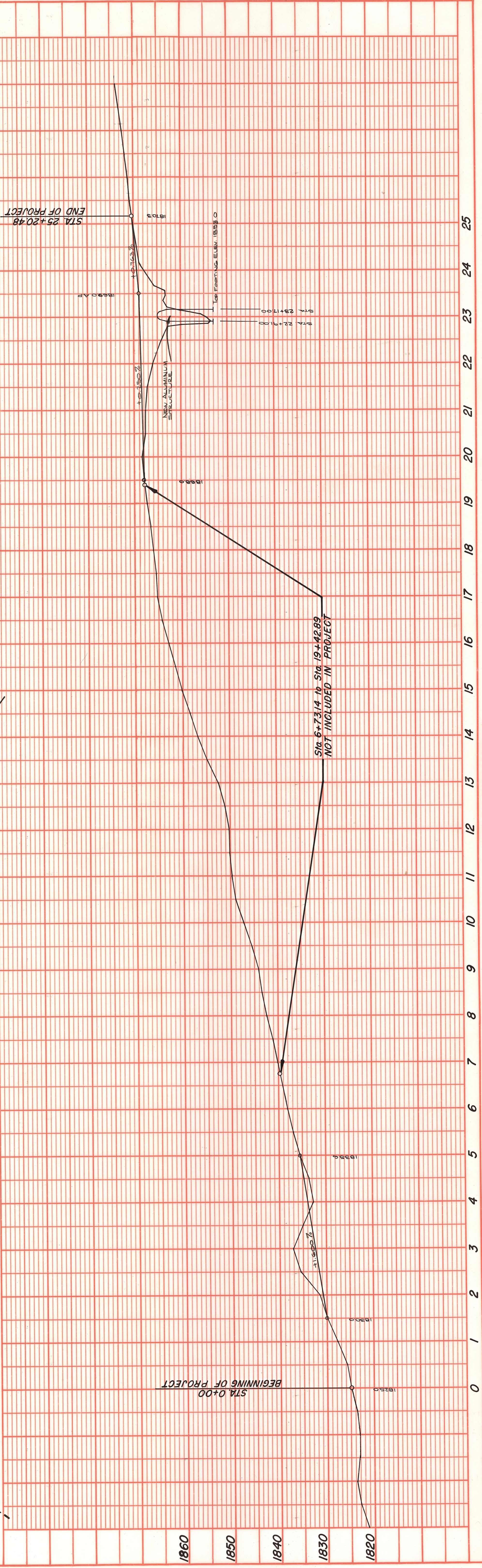


OFFICE OF COUNTY ROAD ENGINEER
KITITAS COUNTY
ELLENSBURG, WASHINGTON

PARKE CREEK RD

SCALE: $\frac{1}{2}'' = 100'$ CRP 10-73
DRAWN BY BS DATE AUGUST, 1970 SHEET 1 OF 1
APPROVED: *Andrew S. Blawie* COUNTY ROAD ENGINEER

DATE	REVISIONS	SAY	BY
5/14/73	FINISH GRADE AT STA. 25+20.48	1	BS
5/22/73	REMOVE BRASS CAP NOTE	1	BS



NO.	DATE	BY

NO.	DATE	BY