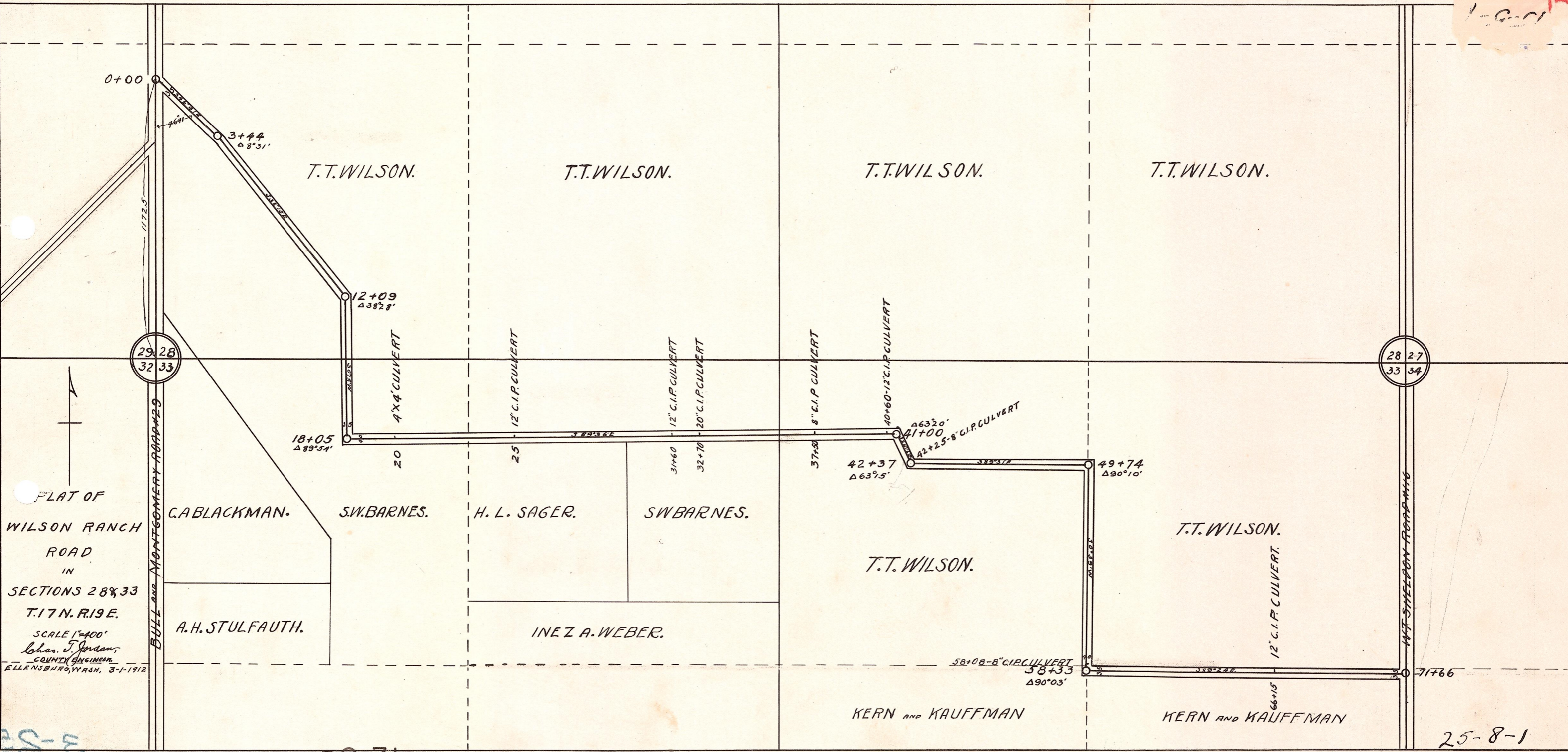


1-6-01



PLAT OF
WILSON RANCH
ROAD
IN
SECTIONS 28 & 33
T.17 N. R.19 E.
SCALE 1"=400'
Chas. J. Jordan,
COUNTY ENGINEER,
ELLENBURG, WASH., 3-1-1912

BULL and MONTGOMERY ROAD #29

MT WILSON ROAD #16

DRAFTER WYVAH NO. 2111

25-8
ORCHARD RD 20-31

25-8-1