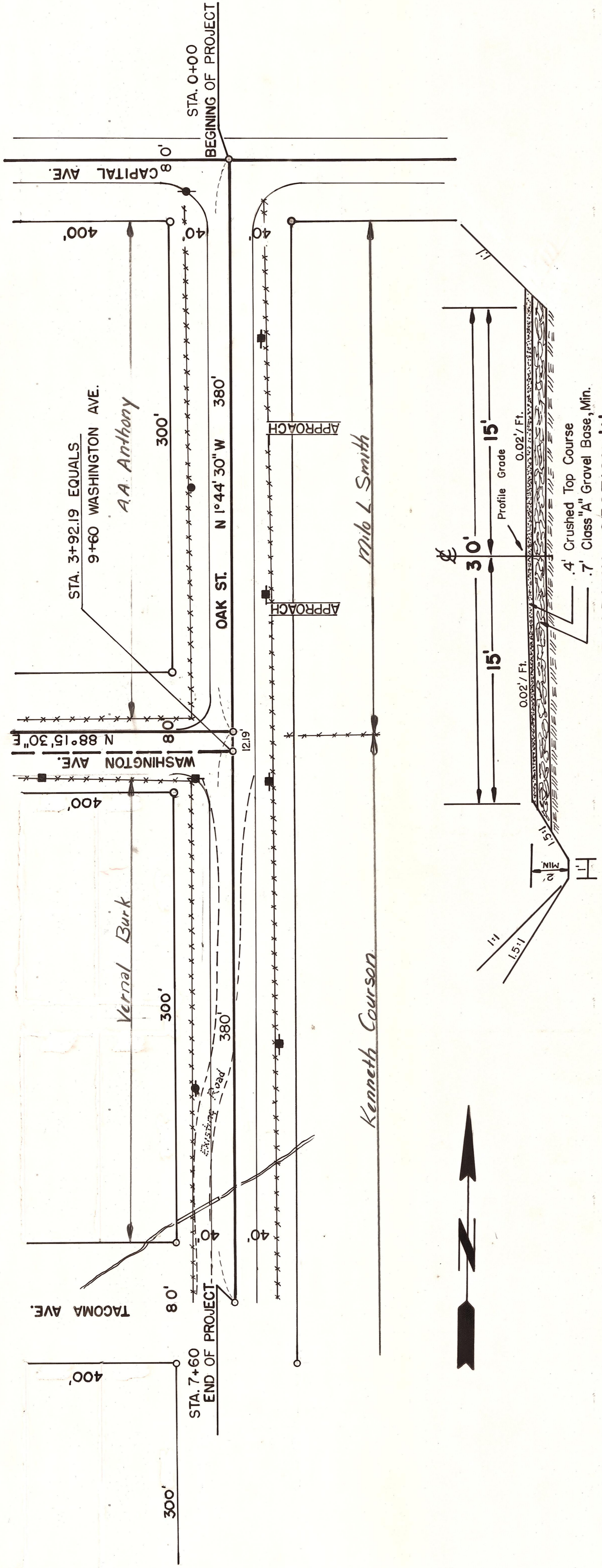


T.17N.R.18E. WM.

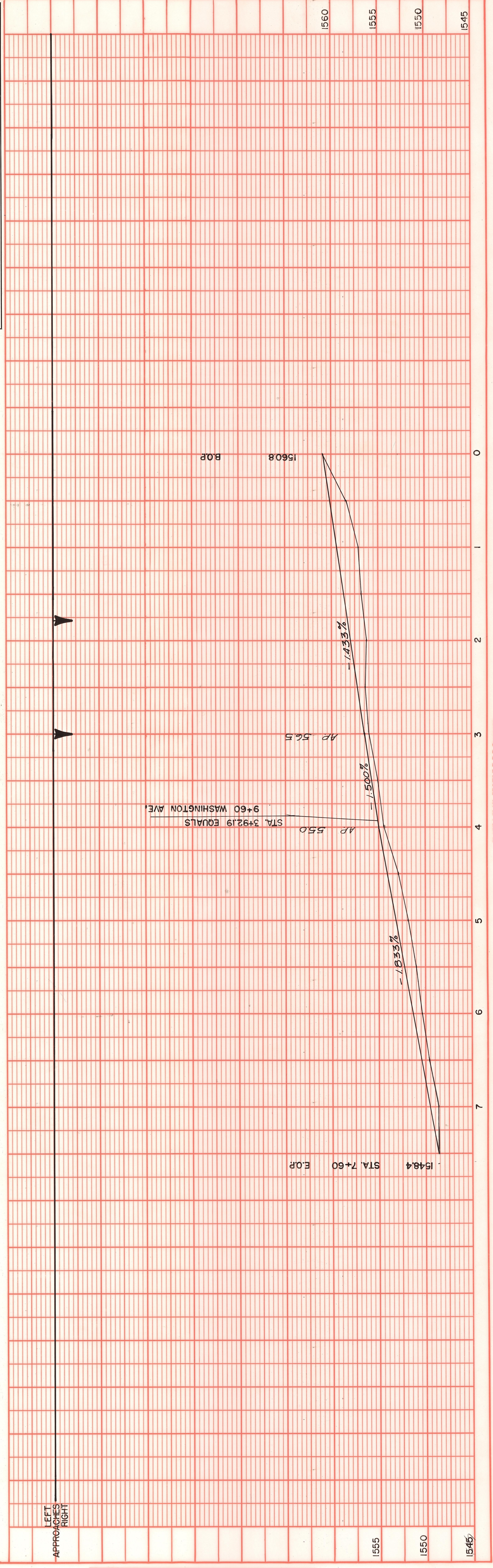


OFFICE OF COUNTY ROAD ENGINEER
 KITTITAS COUNTY
 ELLENSBURG, WASHINGTON

OAK ST.
 LENGTH .14 MILE

SCALE: $\frac{1}{2}$ " = 50'
 DRAWN BY B.S. DATE MAR. 68
 APPROVED: *[Signature]* DATE 7-3-68

SHEET 1 OF 1
 COUNTY ROAD ENGINEER



NO.	DATE	BY

PLANNING
 SURVEYED
 PLOTTED
 ALIGNMENT CHECKED
 B.M. NOTED
 STRUCTURE NOTATIONS CHECKED

NO.	DATE	BY

PROFILE
 SURVEYED
 PLOTTED
 GRADES CHECKED
 B.M. NOTED
 STRUCTURE NOTATIONS CHECKED