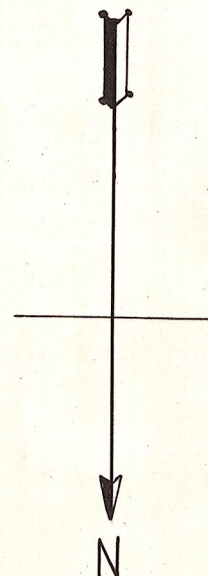
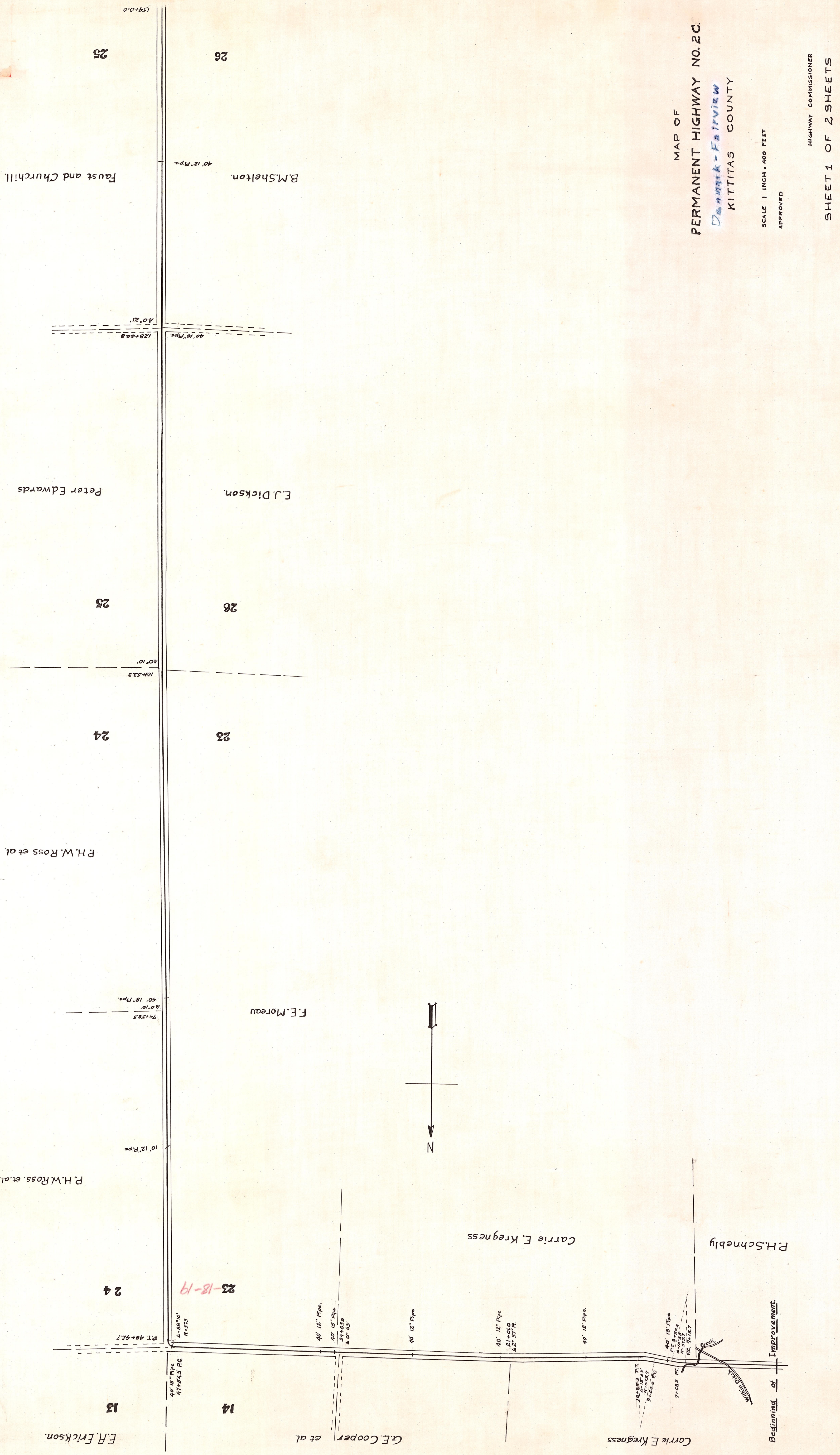


Sec. Hwy. 7-B



MAP OF  
 PERMANENT HIGHWAY NO. 2C.  
*Dunkirk-Fairview*  
 KITTITAS COUNTY

SCALE 1 INCH = 400 FEET  
 APPROVED

HIGHWAY COMMISSIONER

SHEET 1 OF 2 SHEETS

J.R. Miles

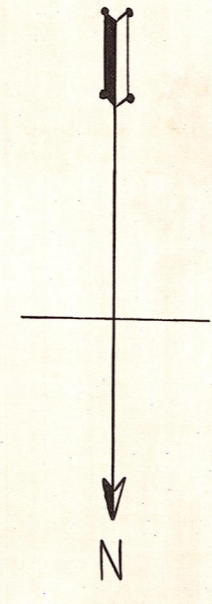
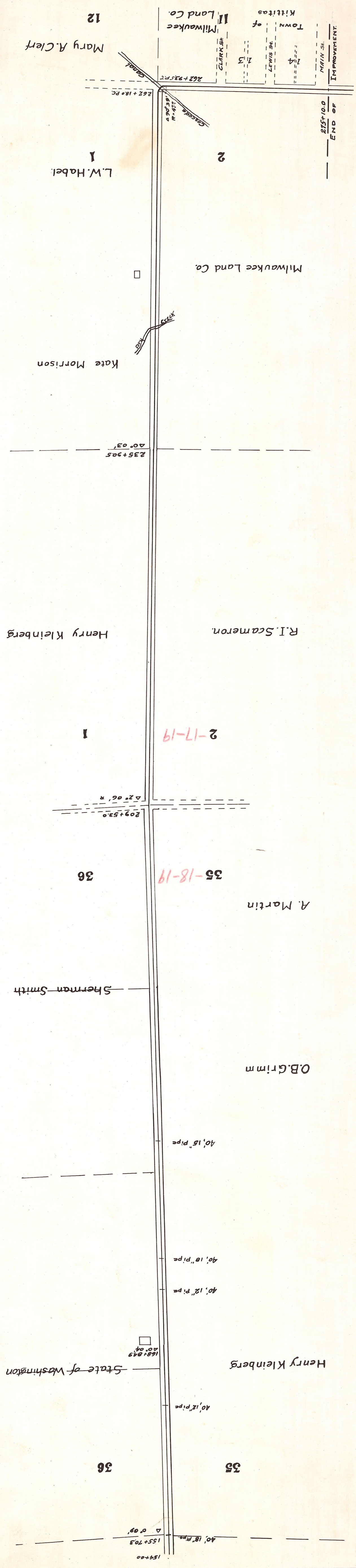
W.T. Bowman Eng'g. No. 81 RD. (ERICKSON RD.) 20-27

4-15-27



Sec. Hwy. 7-B

311-5-5



MAP OF  
 PERMANENT HIGHWAY NO. 2C.

KITTITAS COUNTY.

SCALE 1 INCH = 400 FEET  
 APPROVED

HIGHWAY COMMISSIONER

SHEET 2 OF 2 SHEETS

W.T. Bowman Eng'g.

No. 81 RD.

20-27

4-15-2

J.R. Mires