

T.17 N.R.19 E., W.M.  
SEC. 17 & 18

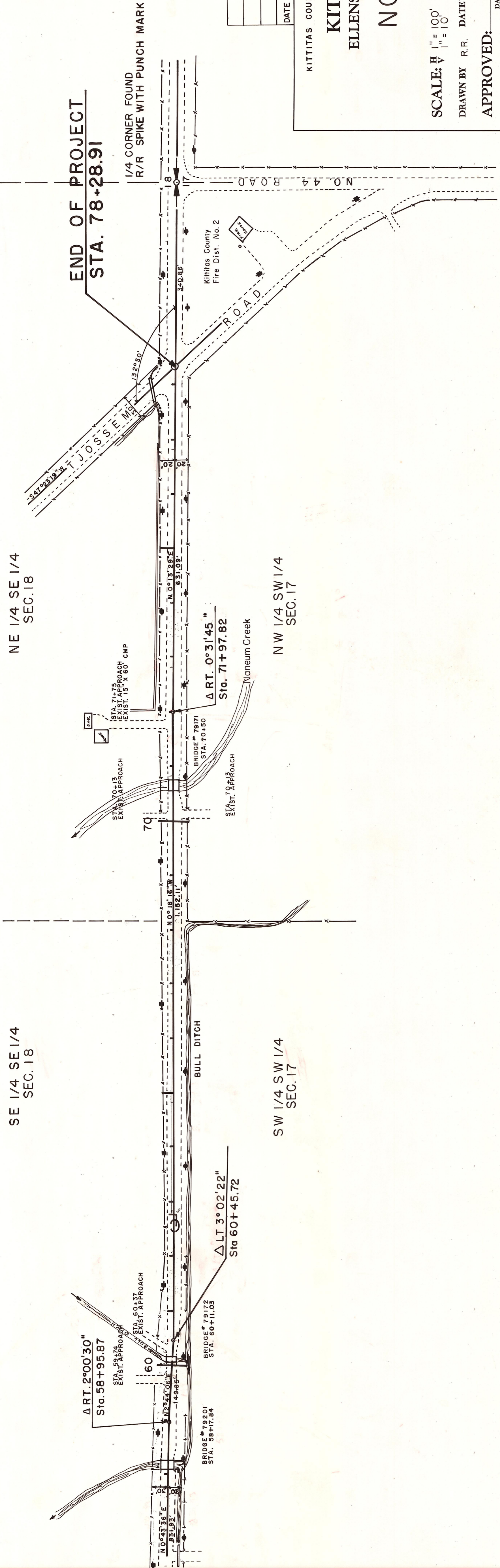
SE 1/4 SE 1/4  
SEC. 18

NE 1/4 SE 1/4  
SEC. 18

SW 1/4 SW 1/4  
SEC. 17

NW 1/4 SW 1/4  
SEC. 17

LEGEND:  
WIRE FENCE  
POWER POLE  
TELEPHONE POLE  
SHOULDER



DATE	REVISION	BY

KITTITAS COUNTY DEPARTMENT OF PUBLIC WORKS  
KITTITAS COUNTY  
ELLENSBURG, WASHINGTON

**NO. 6 ROAD**

LENGTH 1.48 MILES

CRP 5-74

SCALE:  $\frac{1"}{100'}$   
 $\frac{1"}{10'}$

DRAWN BY R.R. DATE March 1975 SHEET 3 OF 3

APPROVED: \_\_\_\_\_

DATE \_\_\_\_\_ DIRECTOR OF PUBLIC WORKS

LEFT APPROACHES  
RIGHT



U.S.G.S.  
BRASS CAP

B.M. 14  
SPIKE IN P. POLE  
DEPT. STA. 724.50  
ELEV. 1474.50

B.M. 15  
P. POLE  
DEPT. STA. 724.50  
ELEV. 1485.64

1480

1470

BRIDGE 79201  
STA. 58+17.84  
A.P. 1472.80

BRIDGE 79176  
STA. 60+11.68  
A.P. 1474.50

A.P. 1477.50

BRIDGE 79171  
STA. 70+50

A.P. 1481.70

P. POLE  
YC-300'

END OF PROJECT  
STA. 78+28.91

58 59 60 61 62 63 64 65 66 67 68 69 70 71 72 73 74 75 76 77 78

NO. 6 RD. 28-10

PLATE 1 PLAN-PROFILE B P R STANDARD  
ENGINE OFFICE CO. CHICAGO, ILL. U.S.A.

PLAN
DATE
BY
REVISION
BY
DATE
NO. OF WKT. CHECKED
BY
DATE
NOTE BOOK
NO.

PROFILE
DATE
BY
REVISION
BY
DATE
NO. OF WKT. CHECKED
BY
DATE
NOTE BOOK
NO.