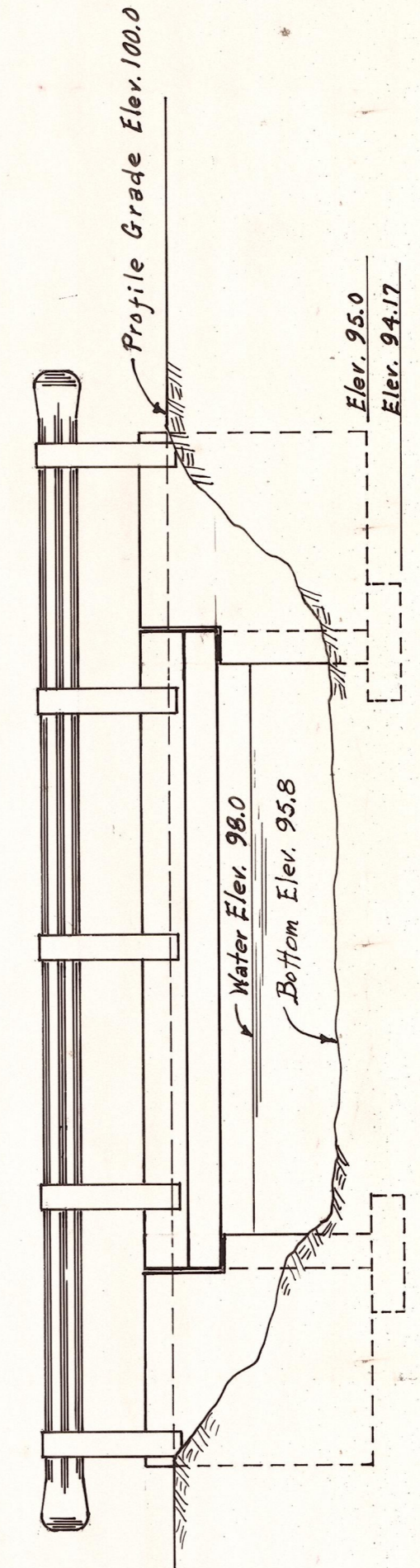
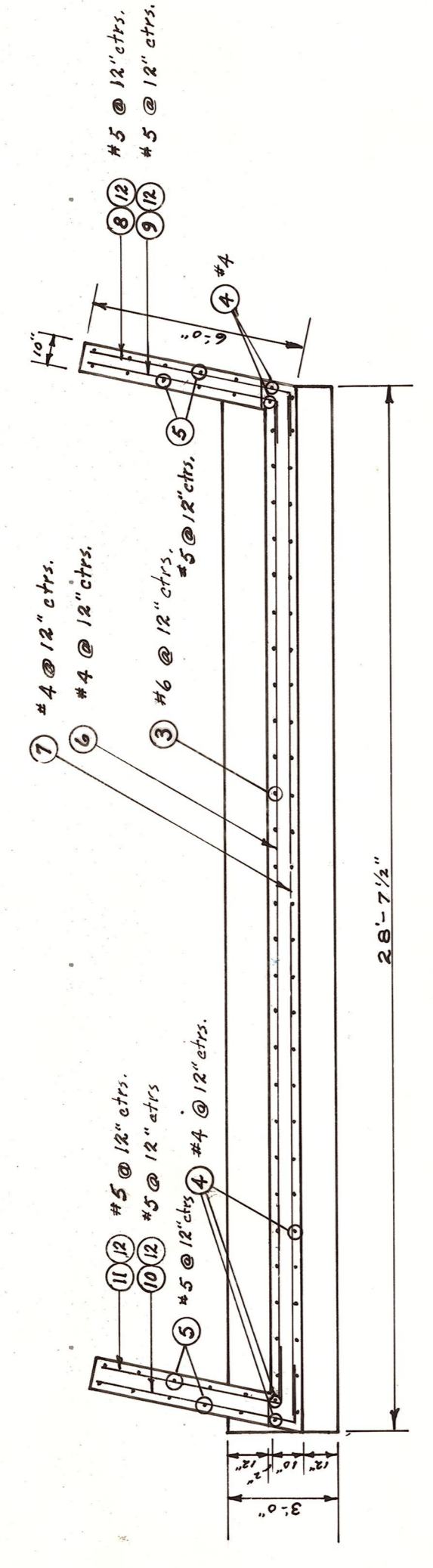


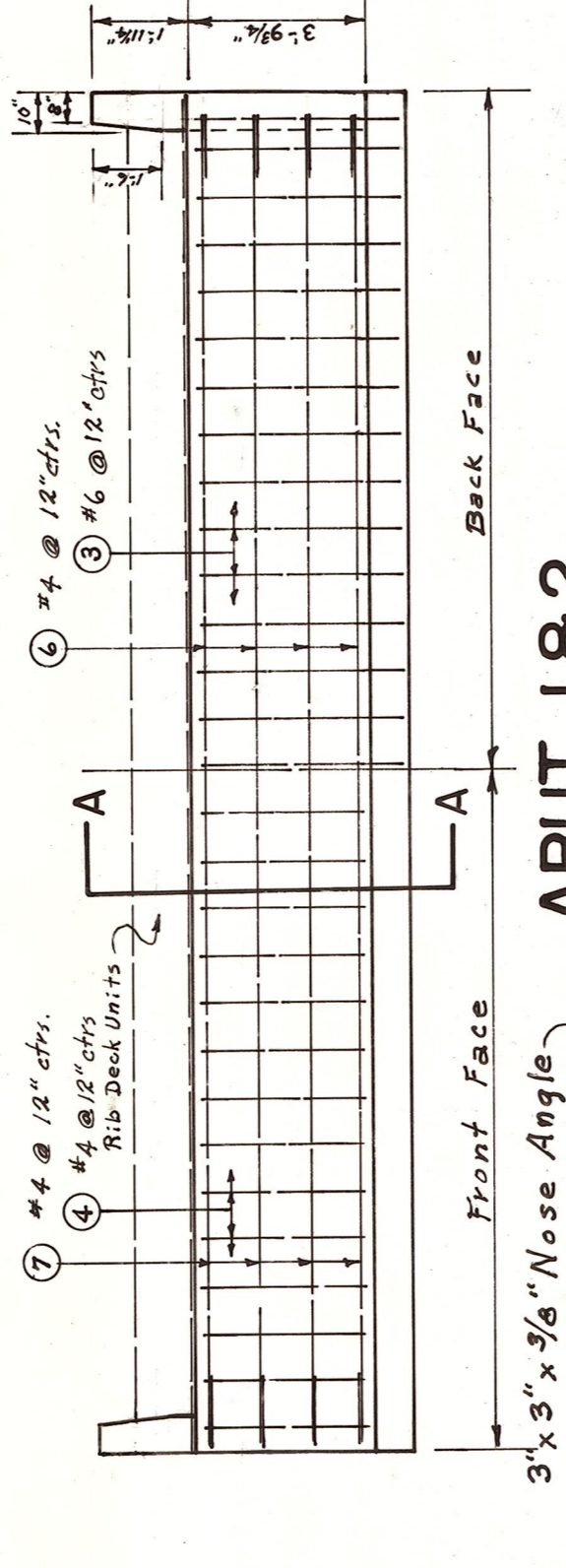
PLAN
Scale: 1/4"=1'-0"



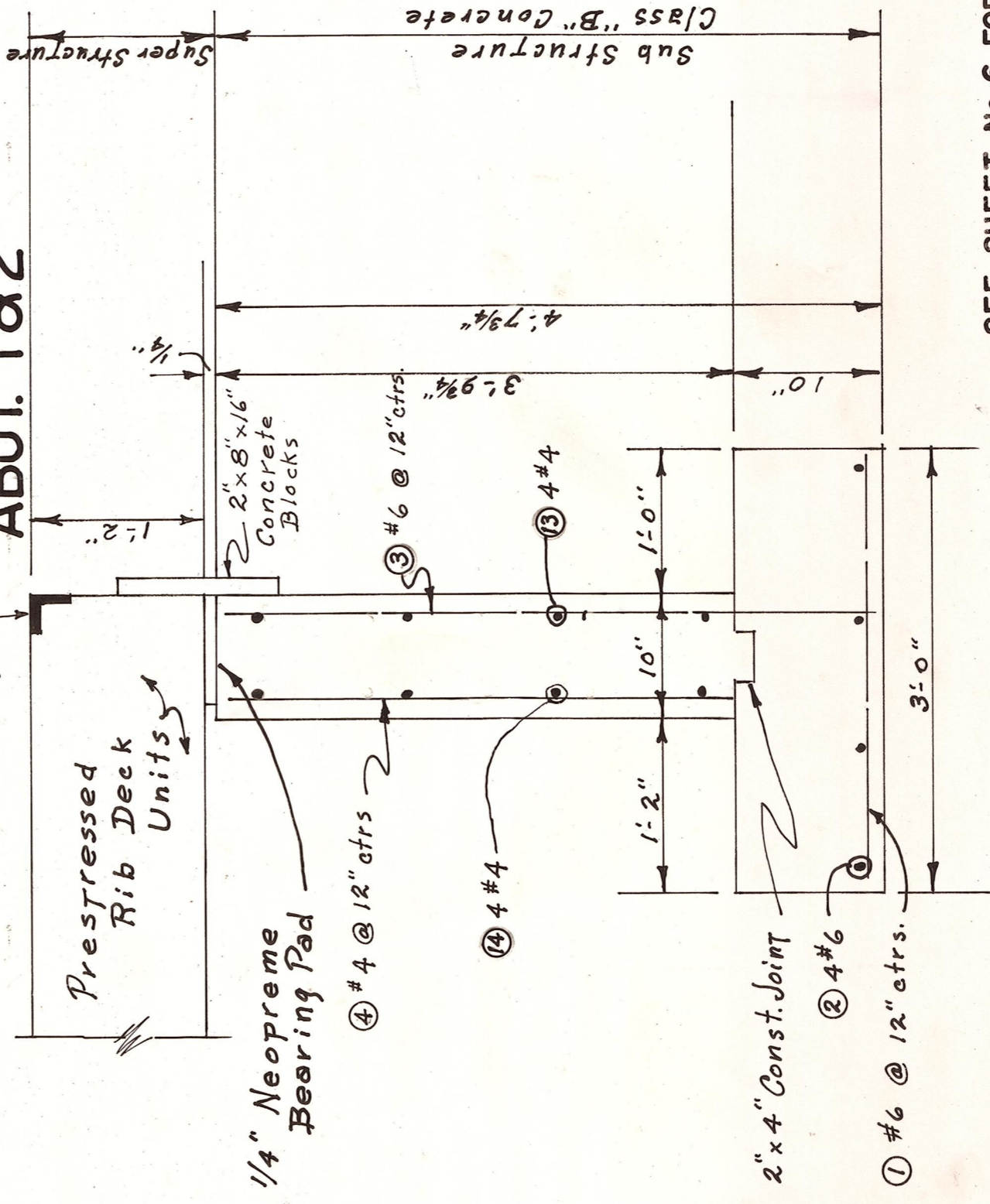
ELEVATION



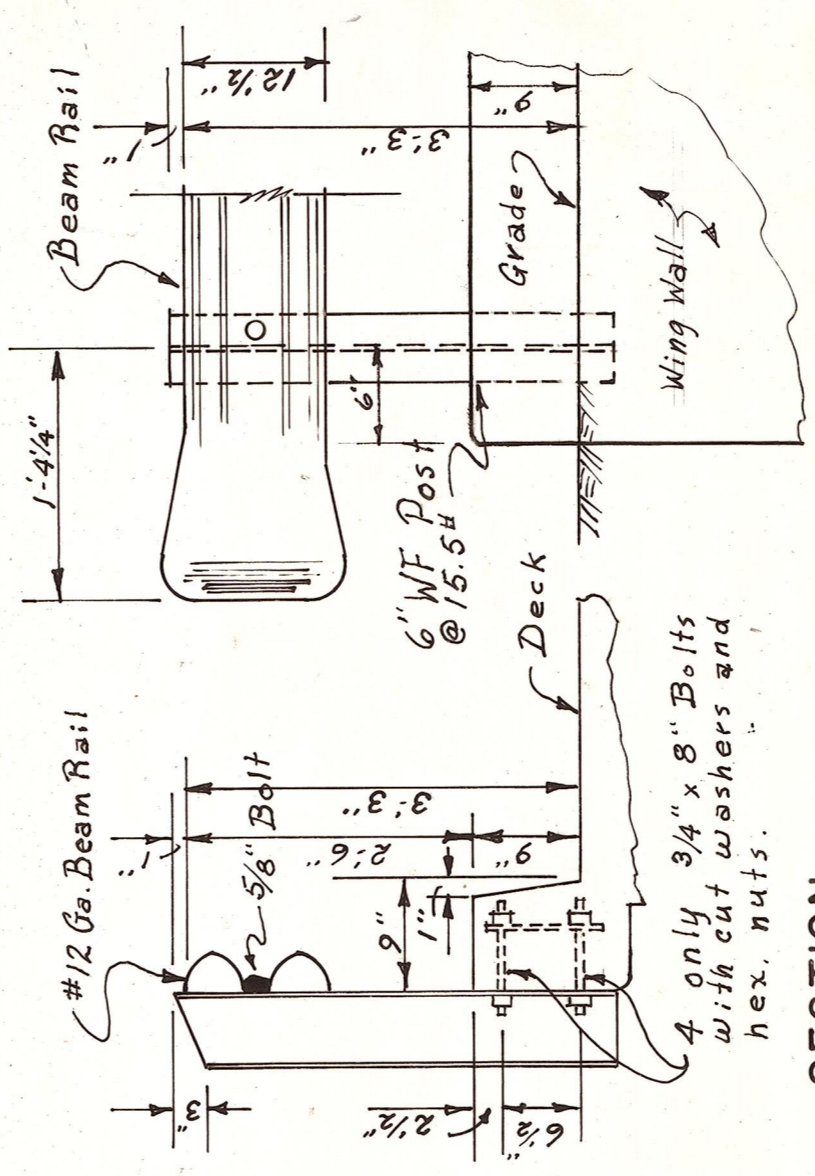
Scale: 1/4"=1'-0"



ABUT. 1&2



Scale: 1/4"=1'-0"



SECTION
BRIDGE RAILING

DETAIL-END POST

Scale: 3/4"=1'-0"

SEE SHEET No. 6 FOR GENERAL NOTES
LOADING - H 20

REINFORCING STEEL BARS			
Bar Size	Location	No.	Description
① #6	Footings	58	2'-9" str.
② #6	Abut. Wall, Vert. Back Face	8	28'-4" "
③ #6	" " " Front Face	54	4'-4" "
④ #6	Wing Walls, Vert. Front & Back	66	3'-8" "
⑤ #6	Abut. Wall, Horiz. Back Face	40	5'-6" "
⑥ #6	" " " Front Face	8	27'-3" "
⑦ #6	Wing Wall, Horiz. Front Face	8	28'-3" "
⑧ #6	" " " Back Face	8	7'-3" "
⑨ #6	" " " Front Face	8	6'-8" "
⑩ #6	" " " Back Face	8	7'-2" "
⑪ #6	" " " Front & Back	8	6'-7" "
⑫ #6	" " " Front & Back	8	4'-9" "

SUMMARY OF QUANTITIES		
Item No.	Item	Quantities
1.	Structure Excavation	75 c.y.
2.	Concrete Class "B"	155 c.y.
3.	Reinforcing Steel	1900 lbs.
4.	Superstructure, in place	Lump Sum
5.	Beam Guard Railing	55 lin. ft.
6.	Remove Existing Bridge	Lump Sum

SINGLE BEAM GUARD RAILING

OFFICE OF COUNTY ROAD ENGINEER
KITTITAS COUNTY
 ELLENSBURG, WASHINGTON
BRIDGE No. 79171
No. 6 ROAD
 SCALE: 1/4" = 1'-0"
 C.R.P. 7-68
 DRAWN BY M.F.G. DATE AUG. 1968
 APPROVED: *[Signature]* DATE *[Signature]*
 COUNTY ROAD ENGINEER

ELEVATION DATUM - ASSUMED = 100.00