

12-8-1

ROAD DIV. No.	8
STATE	WASH.
FED. AID. PROJ. No.	S-0565 (1)
FISCAL YEAR	
No.	1
SHEETS	3

CONVENTIONAL SIGNS

- STATE OR NATIONAL LINE
- COUNTY LINE
- CITY OR TOWN LINE
- TOWNSHIP LINE
- SECTION LINE
- 1/4 LINE
- 1/8 LINE
- GRANT LINE
- FENCE LINE
- UNFENCED PROPERTY
- BASE OF SURVEY LINE
- RIGHT OF WAY LINE
- TRAVELED WAY
- RAILROAD
- EXISTING CULVERT
- PROPOSED CULVERT
- GUARD RAIL
- RETAINING WALL
- POWER POLES
- TELEPHONE OR TELEGRAPH POLES
- GOVERNMENT MEANDER LINE
- MARSH

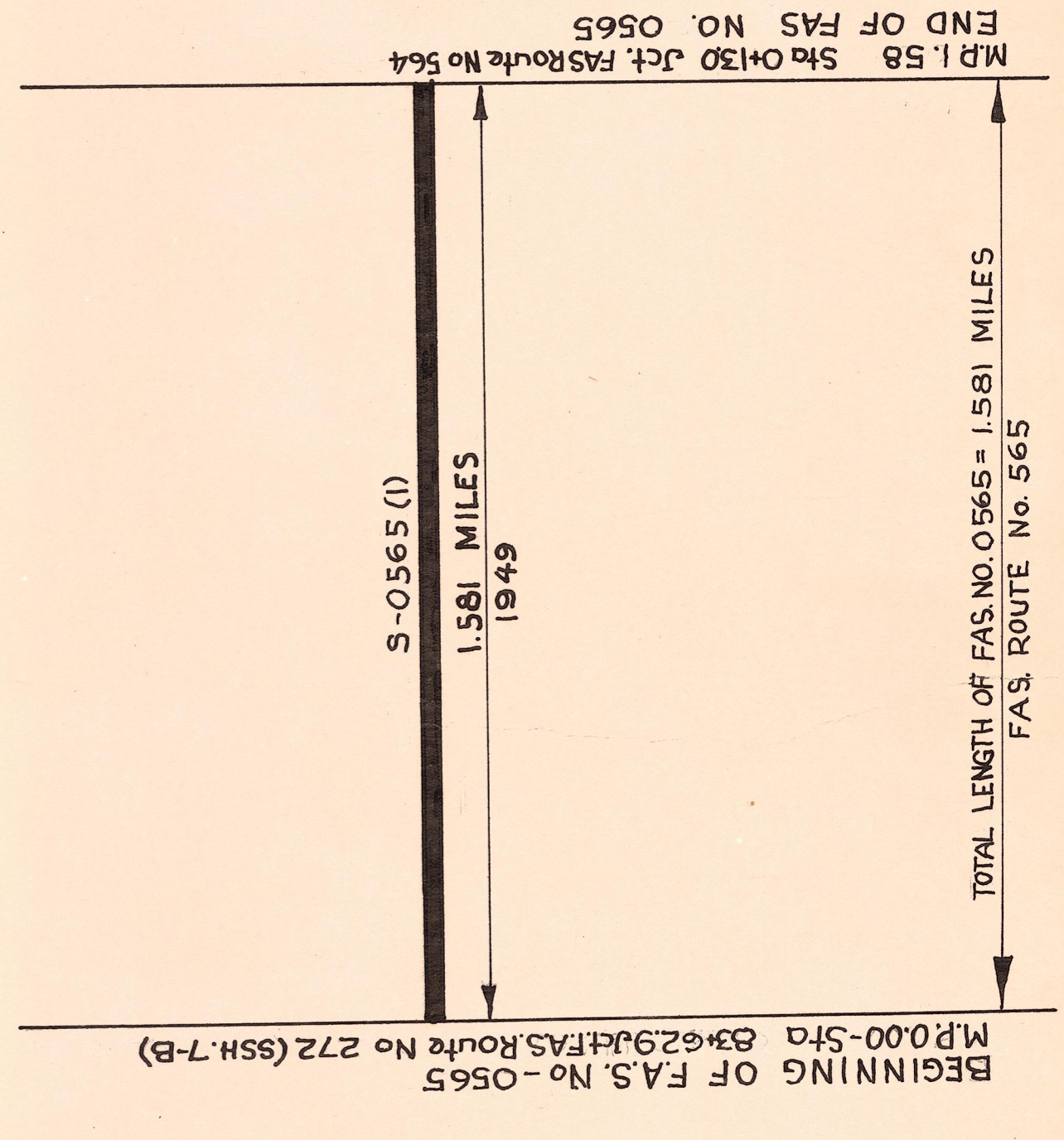
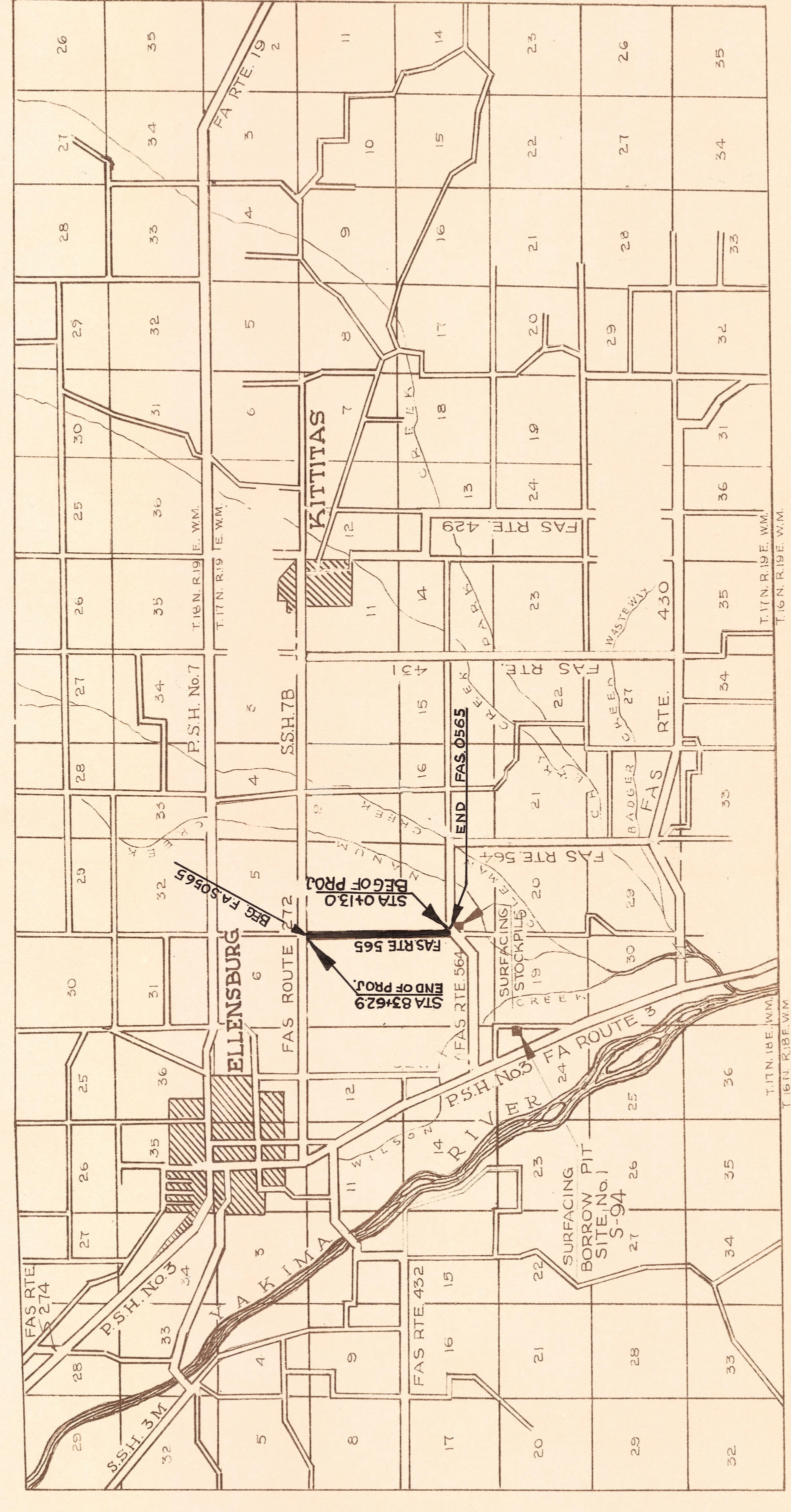
INDEX

SHEET	NO	1	TITLE & LAYOUT
"	"	2	ROADWAY SECTION & SUMMARY OF QUANTITIES
"	"	3	PLAN & PROFILE STA 0+13.0 TO STA 834+62.9

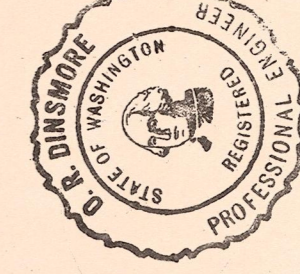
STATE OF WASHINGTON
 DEPARTMENT OF HIGHWAYS
 OLYMPIA, WASHINGTON
 COUNTY ROAD NO. 6
 FEDERAL AID SECONDARY ROUTE NO. 565
 KITTITAS COUNTY
 FEDERAL AID SECONDARY PROJECT NO. S-0565 (1)

LAYOUT

GROSS LENGTH 1.581 MILES
 EXCEPTIONS 0.000 "
 NET LENGTH 1.581 "



MAP DRAWN	DATE
MAP CHECKED	1948
GRAPH DRAWN	1948
GRAPH CHECKED	1948
PROJECT CHECKED	1948
PROJECT DESIGNED	1948
C.M.	2-49
J.L.B.	1-1



Rowland M. Jones
 COUNTY ROAD ENGINEER

APPROVED Jan. 10, 1949

Chas. B. Bain
 CLERK, BOARD OF COUNTY COMMISSIONERS

Approved Feb 16 1949

W. D. ...
 DIRECTOR OF HIGHWAYS

RECOMMENDED FOR APPROVAL	DATE
DISTRICT ENGINEER	
PUBLIC ROADS ADMINISTRATION	
FEDERAL WORKS AGENCY	
APPROVED	DATE
DIVISION ENGINEER	
PUBLIC ROADS ADMINISTRATION	
FEDERAL WORKS AGENCY	

DATE	BY
2-24-49	Sta. on graph revised
	REVISION