

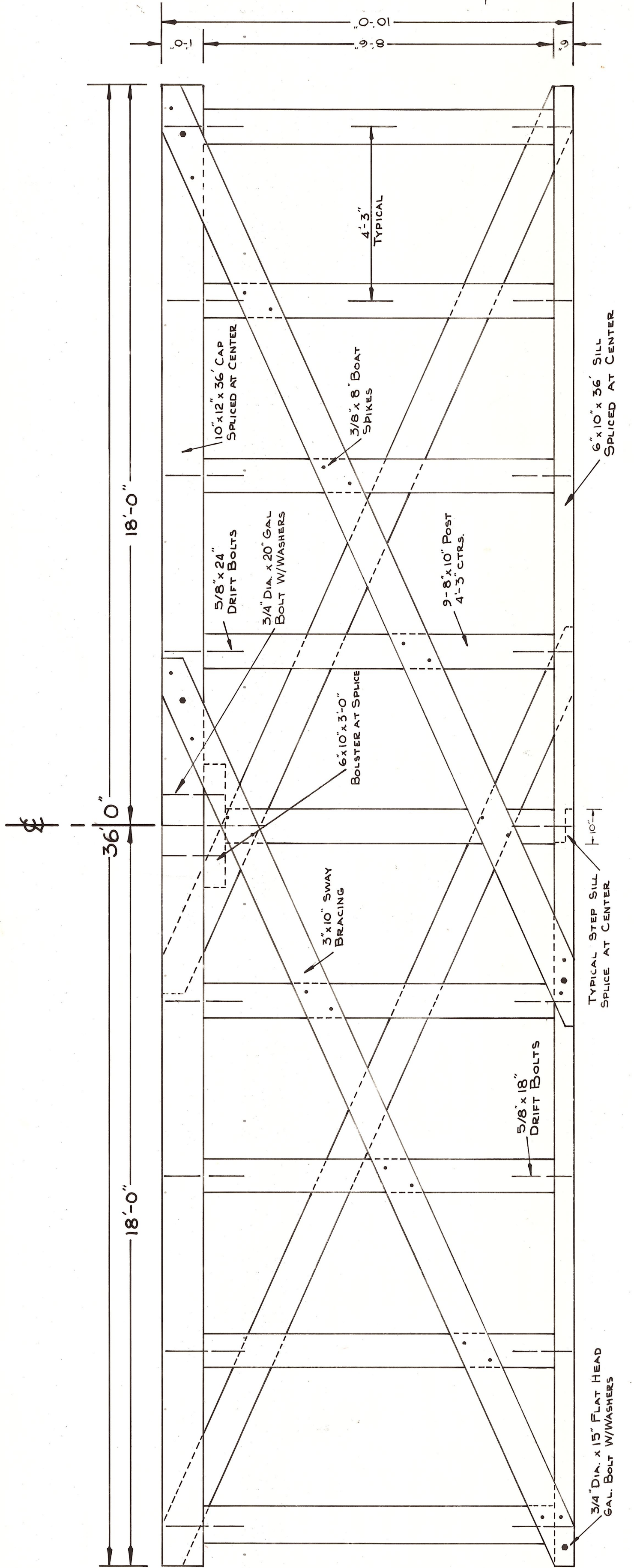
OFFICE OF COUNTY ROAD ENGINEER
 KITTITAS COUNTY
 ELLENSBURG, WASHINGTON

MOHAR RD. BRIDGE
NO. 95031

SCALE: 3/16" = 1'-0"
 DRAWN BY BS
 DATE JUNE, 1970
 SHEET 3

APPROVED: *Andrew E. Blawie*
 COUNTY ROAD ENGINEER

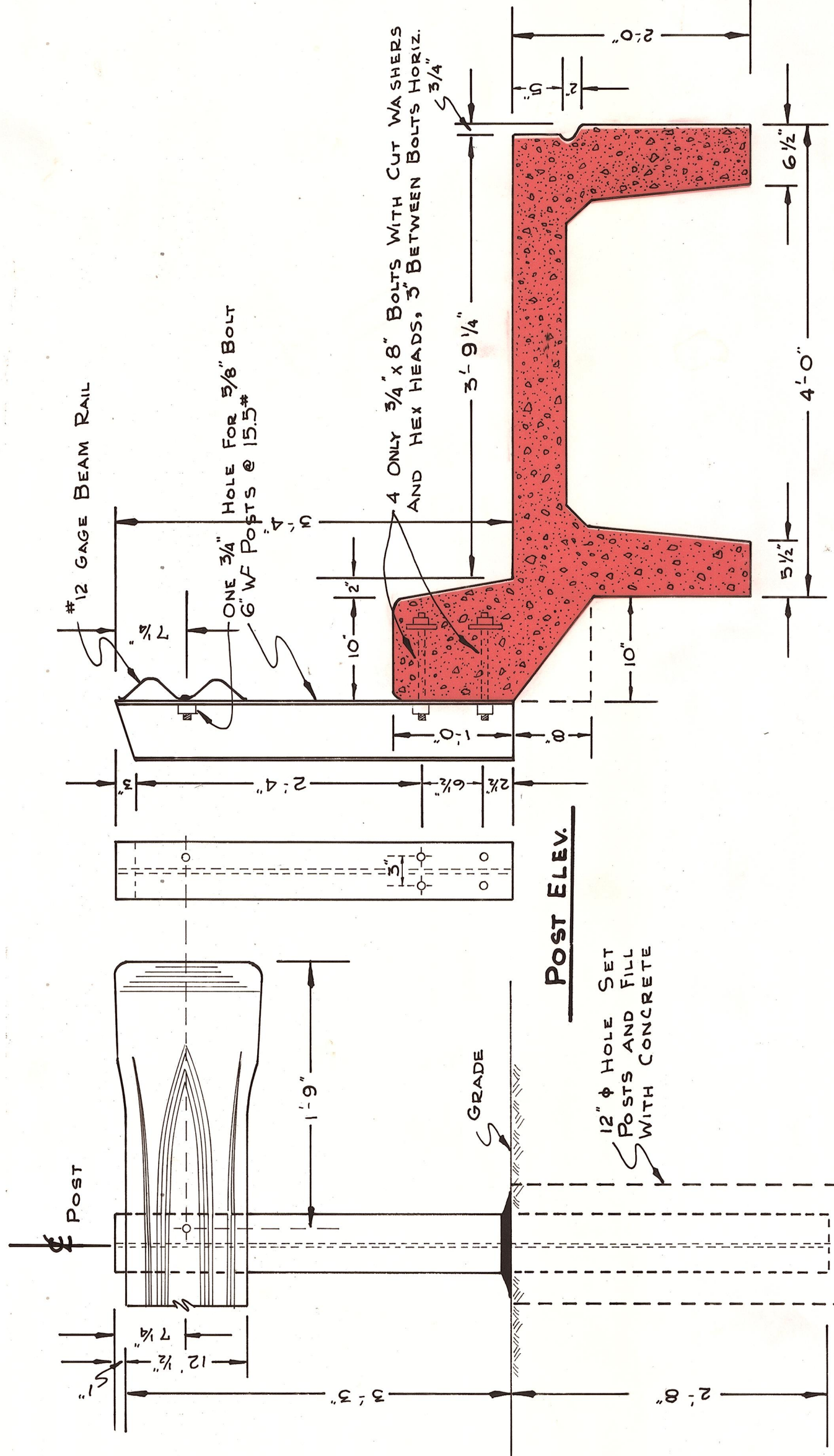
Not Built
 C R P



BENTS 1 & 2

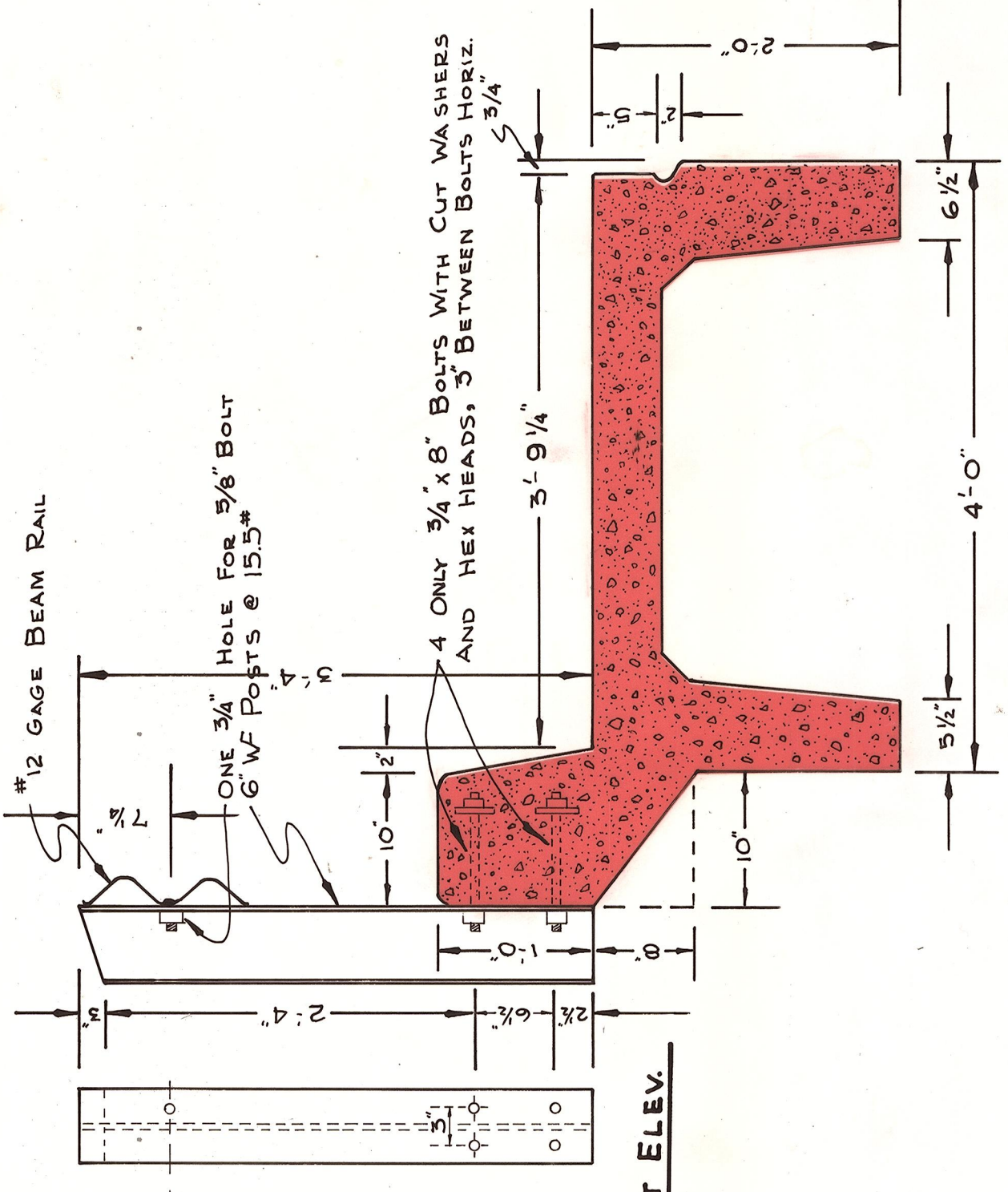
SCALE: 1/2"=1'-0"

NOTE:
WHEN ASSEMBLING BENTS, LEAVE BRACING LOOSE
UNTILL BENTS ARE SET IN PLACE AND POST PLUMBED



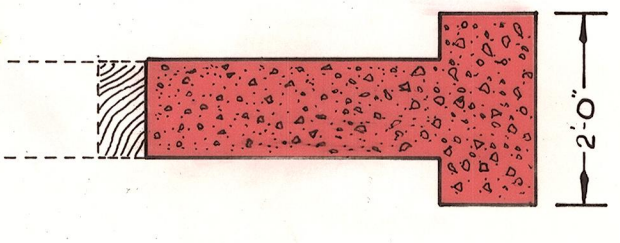
END POST DETAIL

SCALE: 1"=1'-0"



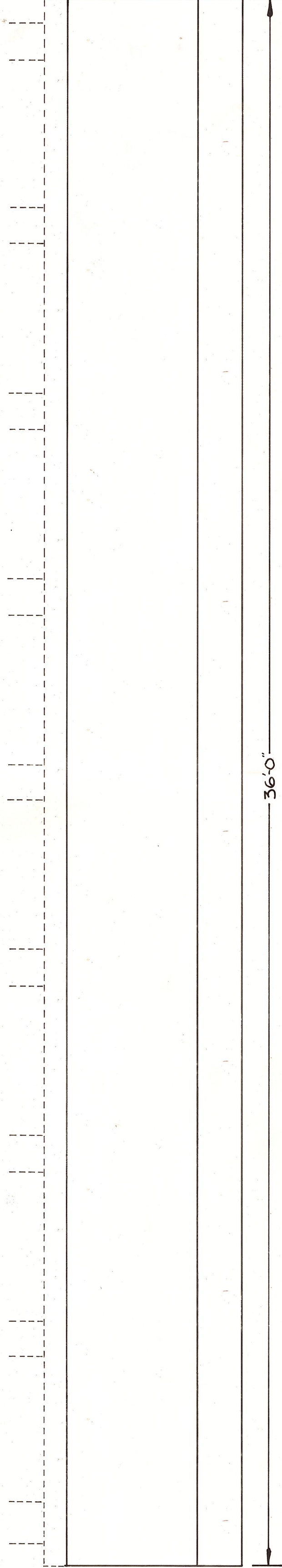
CURB AND RAILING SECTION

SCALE: 1"=1'-0"



TYPICAL SECTION BENT FOOTINGS

BENT #	ELEV. AT END OF BENTS
BENT #1	STA. 6+36.27 ELEV. 2135.81
BENT #2	STA. 6+81.73 ELEV. 2135.31
BENT #1	STA. 6+68.27 ELEV. 2135.17
BENT #2	STA. 6+93.73 ELEV. 2134.67



ELEVATION

SCALE: 1/2"=1'-0"

BENT #1	STA. 6+49.0	ELEV. 2135.56 (TOP)
BENT #2	STA. 6+81.0	ELEV. 2134.92 (TOP)

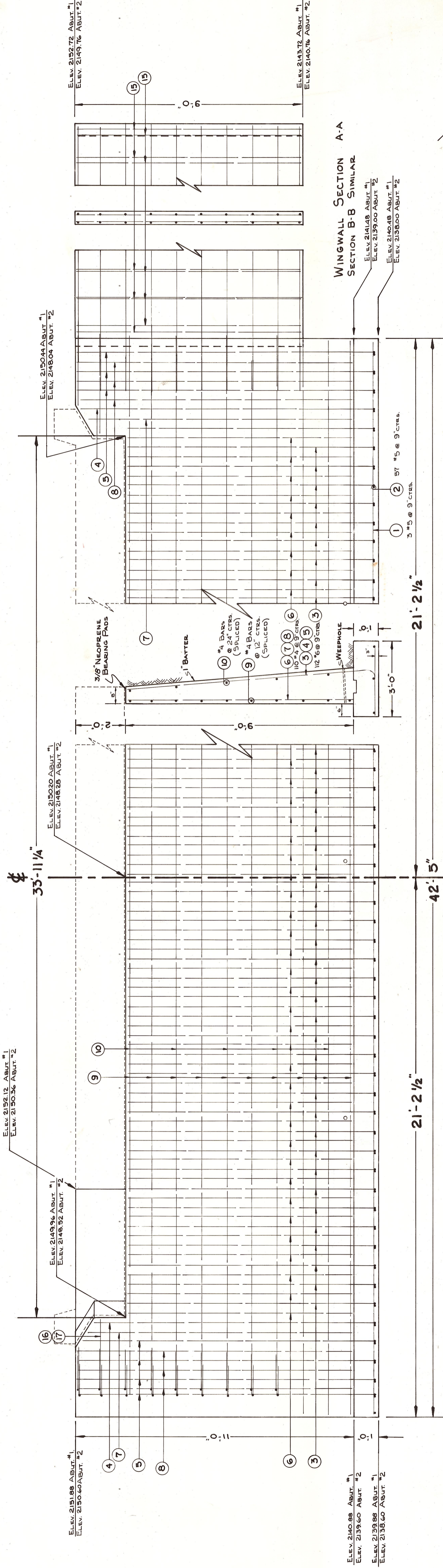


PLAN BENT FOOTINGS #1 & #2

SCALE: 1/2"=1'-0"

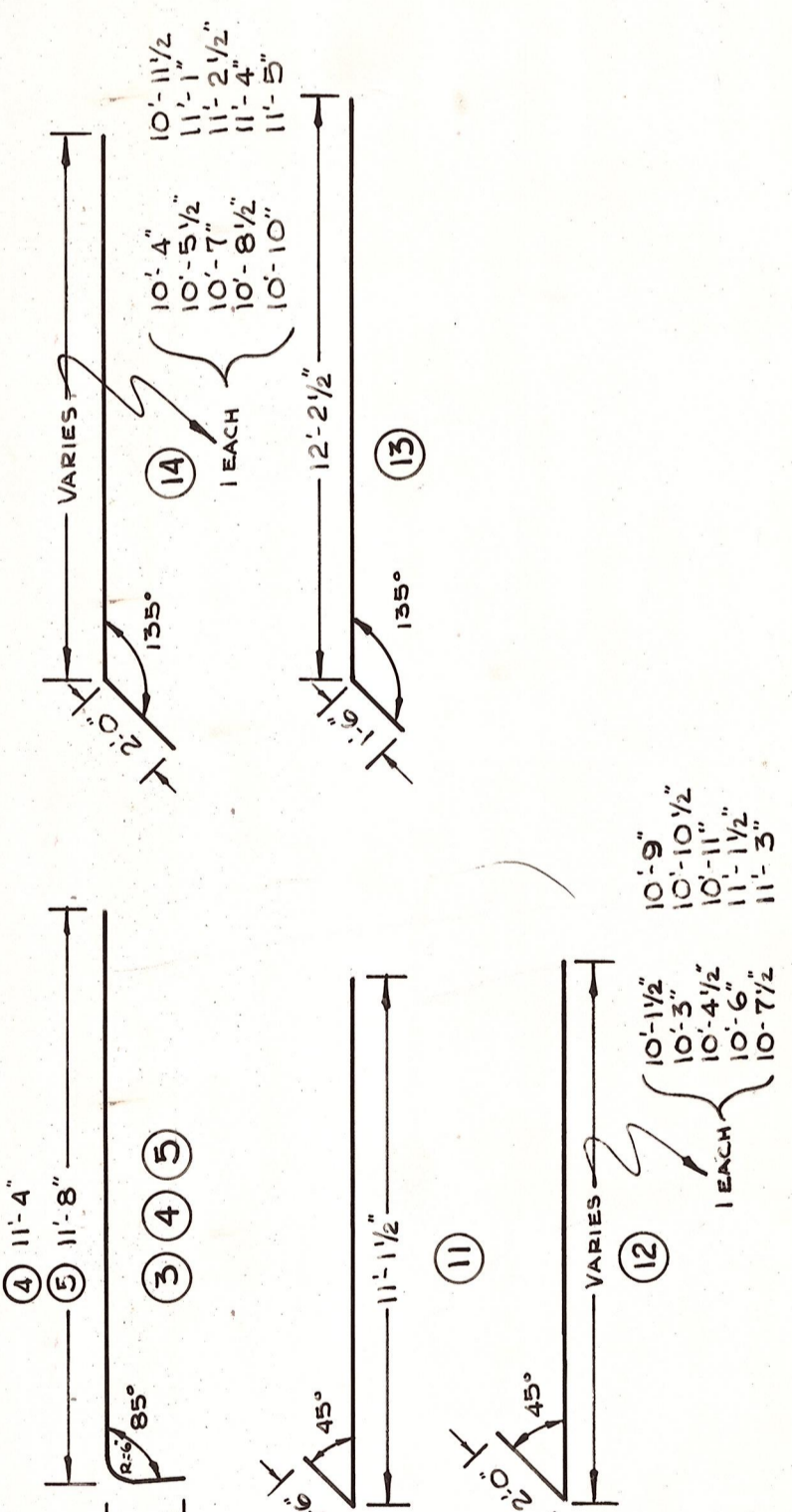
OFFICE OF COUNTY ROAD ENGINEER
 KITTITAS COUNTY
 ELLENSBURG, WASHINGTON
MOHAR RD. BRIDGE
 NO. 95031
 "NOT BUILT" CRP

SCALE: 1/2"=1'-0"
 DRAWN BY B.S. DATE: JUNE, 1970
 APPROVED: *Robert J. Blum* COUNTY ROAD ENGINEER
 SHEET 2



BAR LIST

MARK	LOCATION	NO.	LENGTH	SIZE
1	Footings Longst	12	22'-0"	#5 STR.
2	" Transv.	114	2'-9"	#5 STR.
3	Footings & Abut. Vert.	94	11'-"	#6 BENT
4	" "	4	12'-9"	#6 BENT
5	" "	12	15'-1"	#6 BENT
6	ABUT. VERT.	94	8'-10 1/2"	#4 STR.
7	" "	4	10'-6 1/2"	#4 STR.
8	" "	14	10'-10 1/4"	#4 STR.
9	" "	40	19'-0"	#4 STR.
10	" "	20	21'-9"	#4 STR.
11	WING WALL HORIZ.	20	12'-7 1/2"	#4 BENT
12	" "	20	VARIES	#4 BENT
13	" "	20	13'-8 1/2"	#4 BENT
14	" "	20	VARIES	#4 BENT
15	WING WALL VERT.	60	8'-9"	#4 STR.
16	ABUT. WALL (TOP) HORIZ.	4	2'-0"	#4 STR.
17	" "	4	2'-6"	#4 STR.



OFFICE OF COUNTY ROAD ENGINEER
KITITAS COUNTY
ELLENSBURG, WASHINGTON

MOHAR RD. BRIDGE
NO. 95031
NOT BUILT
CRP

SCALE: AS SHOWN
DRAWN BY B.S. DATE JUNE, 1970 SHEET 3
APPROVED: *[Signature]* DATE 7/14/70 COUNTY ROAD ENGINEER