

INDEX

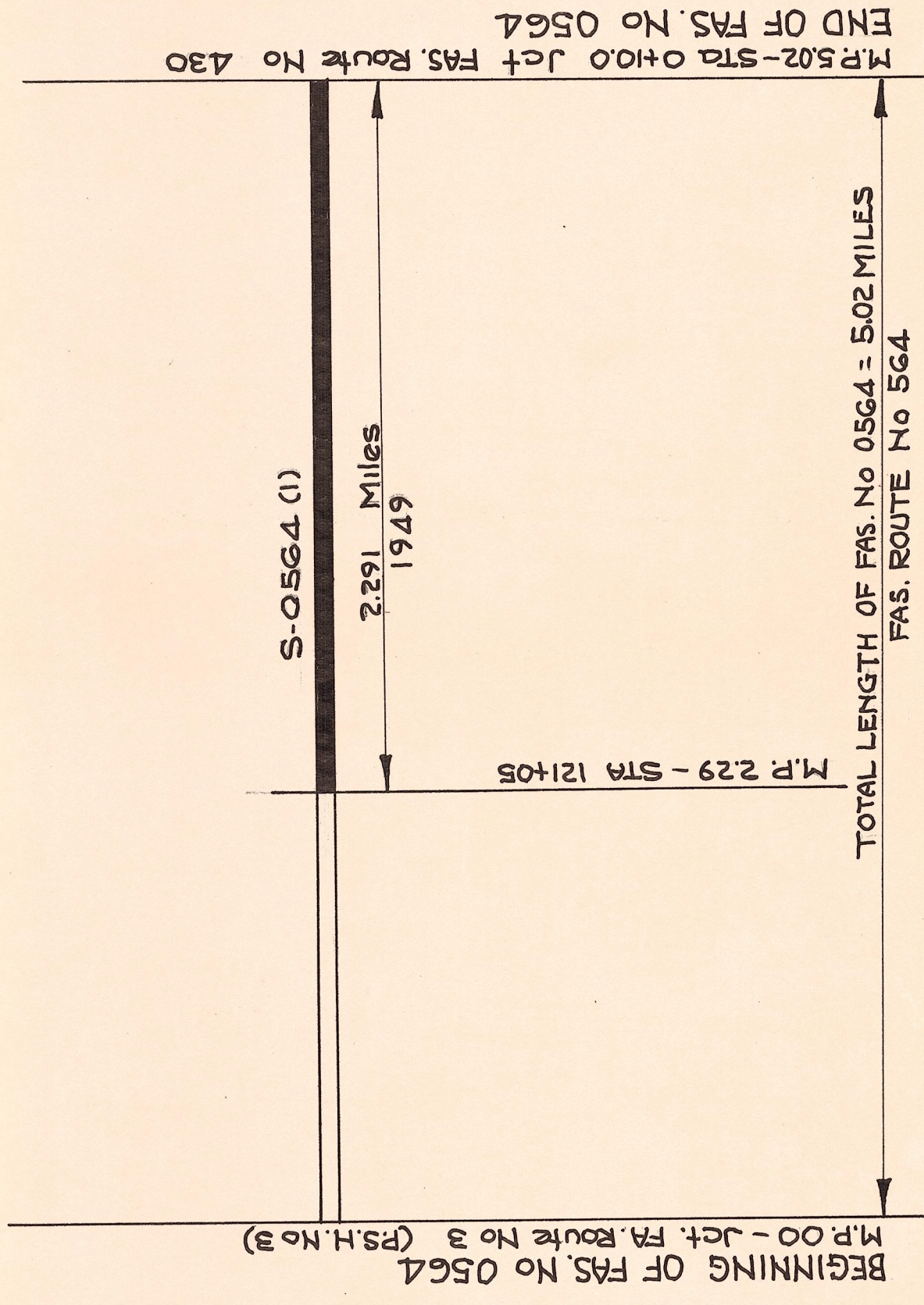
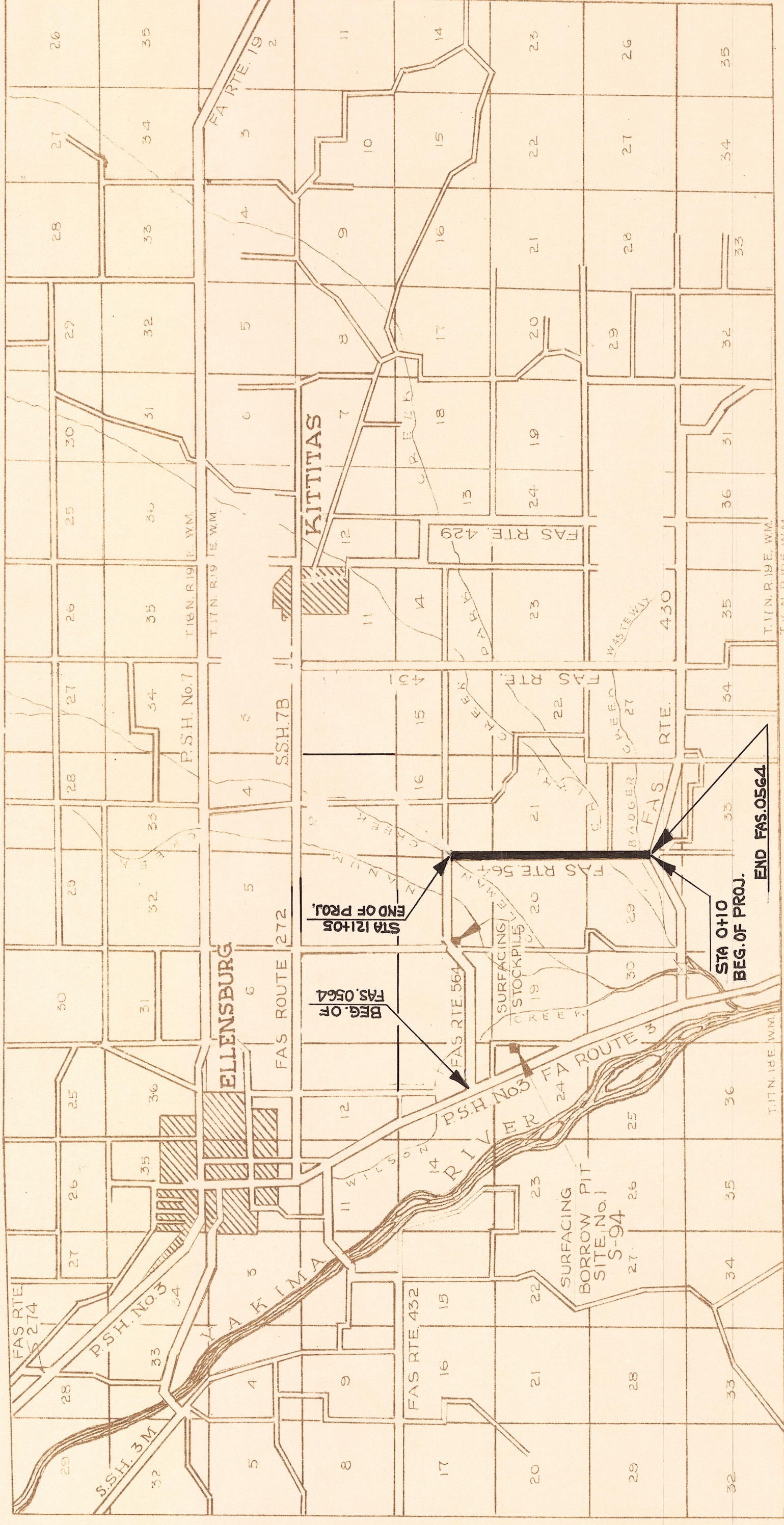
SHEET No 1 TITLE & LAYOUT
 " " 2 ROADWAY SECTION & SUMMARY OF QUANTITIES
 " " 3 PLAN & PROFILE STA 0+10.0 TO STA 12+05

**STATE OF WASHINGTON
 DEPARTMENT OF HIGHWAYS
 OLYMPIA, WASHINGTON
 COUNTY ROAD**

**MOE ROAD
 FEDERAL AID SECONDARY ROUTE NO. 564
 KITTITAS COUNTY
 FEDERAL AID SECONDARY PROJECT NO. S-0564 (1)**

LAYOUT

GROSS LENGTH	2.291	MILES
EXCEPTIONS	0.000	"
NET LENGTH	2.291	"

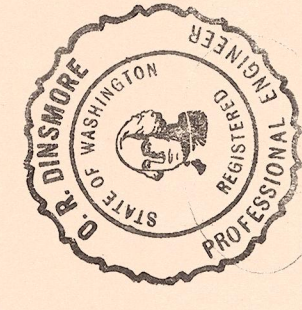


DATE	BY	MAP CHECKED	County 1948
		GRAPH DRAWN	G.M. 1949
		GRAPH CHECKED	J.L.P. 1949
		PROJECT ADDED	G.M. 2-49
		PROJECT CHECKED	J.L.P. 2-49

FED. ROAD DIV. No.	STATE	FISCAL YEAR	SHEET No.	TOTAL SHEETS
8	WASH.	S-0564(1)	1	3

CONVENTIONAL SIGNS

- STATE OR NATIONAL LINE
- COUNTY LINE
- CITY OR TOWN LINE
- TOWNSHIP LINE
- SECTION LINE
- 1/4 LINE
- 1/8 LINE
- GRANT LINE
- FENCE LINE
- UNFENCED PROPERTY
- BASE OR SURVEY LINE
- RIGHT OF WAY LINE
- TRAVELED WAY
- RAILROAD
- EXISTING CULVERT
- PROPOSED CULVERT
- GUARD RAIL
- RETAINING WALL
- POWER POLES
- TELEPHONE OR TELEGRAPH POLES
- GOVERNMENT MEANDER LINE
- MARSH



Approved Feb - 16 1949
 COUNTY ROAD ENGINEER
 APPROVED Jan. 10, 1949
 COUNTY BOARD OF COUNTY COMMISSIONERS

Approved Feb - 16 1949
 DIRECTOR OF HIGHWAYS

RECOMMENDED FOR APPROVAL	DATE
DISTRICT ENGINEER	
PUBLIC ROADS ADMINISTRATION	
FEDERAL WORKS AGENCY	
APPROVED	DATE
DIVISION ENGINEER	
PUBLIC ROADS ADMINISTRATION	
FEDERAL WORKS AGENCY	