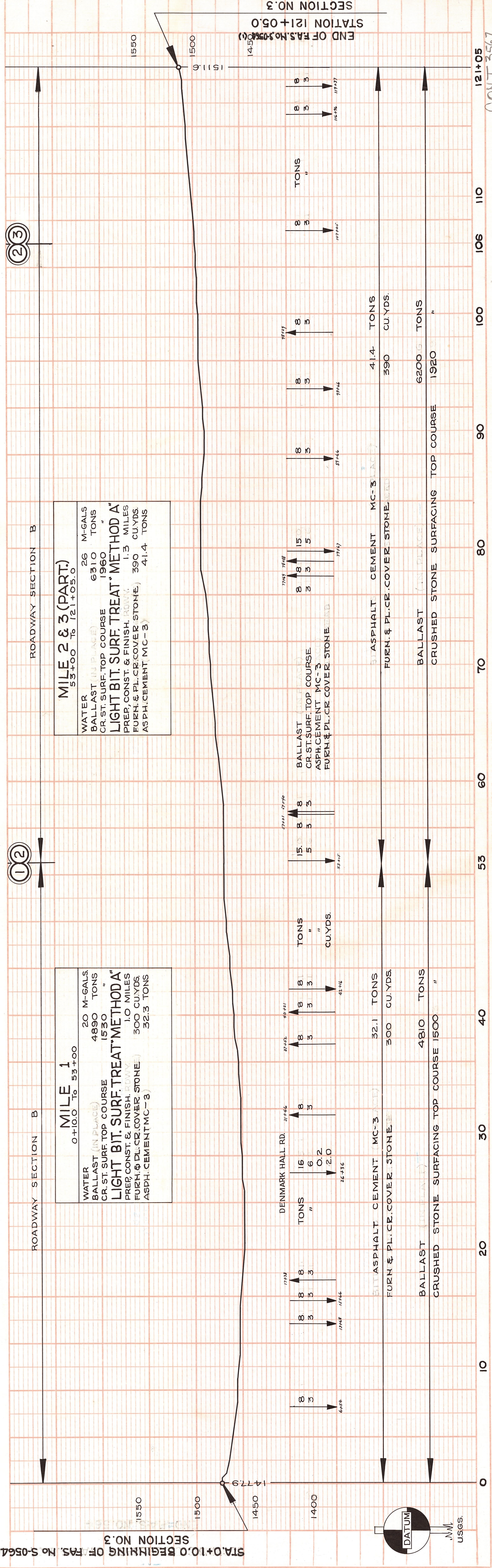
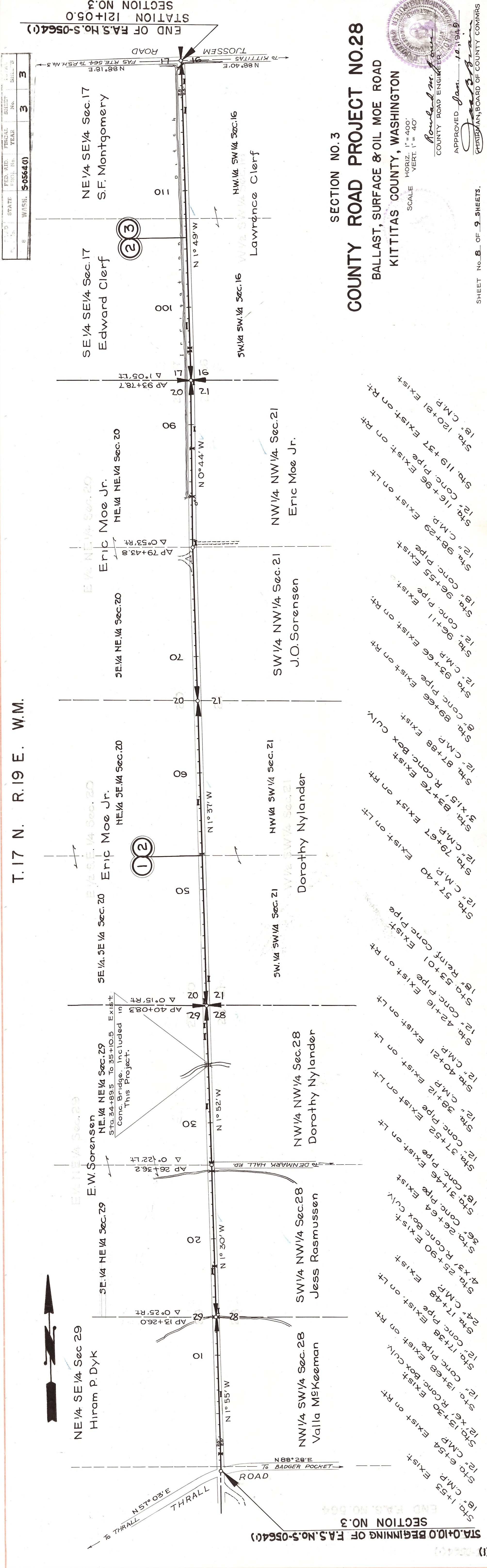


T. 17 N. R. 19 E. W.M.



**MILE 2 & 3 (PART)**  
53+00 TO 121+05.0

WATER	26	M-GALS
BALLAST (IN PLACE)	6310	TONS
CR. ST. SURF. TOP COURSE	1960	"
<b>LIGHT BIT SURF. TREAT "METHOD A"</b>		
PREP, CONST. & FINISH. ROADWAY	1.3	MILES
FURN. & PL. CR. COVER STONE	390	CU YDS.
ASPH. CEMENT (MC-3)	41.4	TONS

**MILE 1**  
0+10.0 TO 53+00

WATER	20	M-GALS
BALLAST (IN PLACE)	4890	TONS
CR. ST. SURF. TOP COURSE	1530	"
<b>LIGHT BIT SURF. TREAT "METHOD A"</b>		
PREP, CONST. & FINISH. ROADWAY	1.0	MILES
FURN. & PL. CR. COVER STONE	300	CU YDS.
ASPH. CEMENT (MC-3)	32.3	TONS

**SECTION NO. 3**  
**COUNTY ROAD PROJECT NO. 28**  
BALLAST, SURFACE & OIL MOE ROAD  
KITITAS COUNTY, WASHINGTON

APPROVED *Jan. 14, 1949*  
COUNTY ROAD ENGINEER  
KITTITAS COUNTY, WASHINGTON  
SCALE: HORIZ. 1" = 400'  
VERT. 1" = 40'

STATION 121+05.0  
END OF F.A.S. NO. S-0564(1)  
SECTION NO. 3

STATION 121+05.0  
END OF F.A.S. NO. S-0564(1)  
SECTION NO. 3

**PLAN**

DESIGNED BY	R.C. Shank
PLANNED BY	R.L. Besaw
CHECKED BY	O.K. Welborn
DATE	12-48

**PROFILE**

DESIGNED BY	R.C. Shank
PLANNED BY	R.L. Besaw
CHECKED BY	O.K. Welborn
DATE	12-48