

T.18 N.R. 18 E. W.M.
SEC. 18

SE 1/4 NE 1/4
SEC. 18
Hand & McManamy - owners

Bill Dean Newkirk - owner
Marvin D. Kelley - contract

NE 1/4 NW 1/4
SEC. 18

A.D. Stevens - owner
Loy C. Wilrow - contract
Jan M. Covello - 1st contract

A.D. Stevens - owner
Loy C. Wilrow - contract
Jan M. Covello - 1st contract

SE 1/4 NW 1/4
SEC. 18
A.D. Stevens - owner

Sta. 0+00 Co. =
Sta. 770+36.08 P.S.H. # 3
Beginning of Project

A.D. Stevens - owner

EDUCATION IN BEARING
S 44° 52' E COUNTRY
S 44° 54' E STATE

1/2" = 100'

1" = 200'

2" = 400'

4" = 800'

8" = 1600'

16" = 3200'

32" = 6400'

64" = 12800'

128" = 25600'

256" = 51200'

512" = 102400'

1024" = 204800'

2048" = 409600'

4096" = 819200'

8192" = 1638400'

16384" = 3276800'

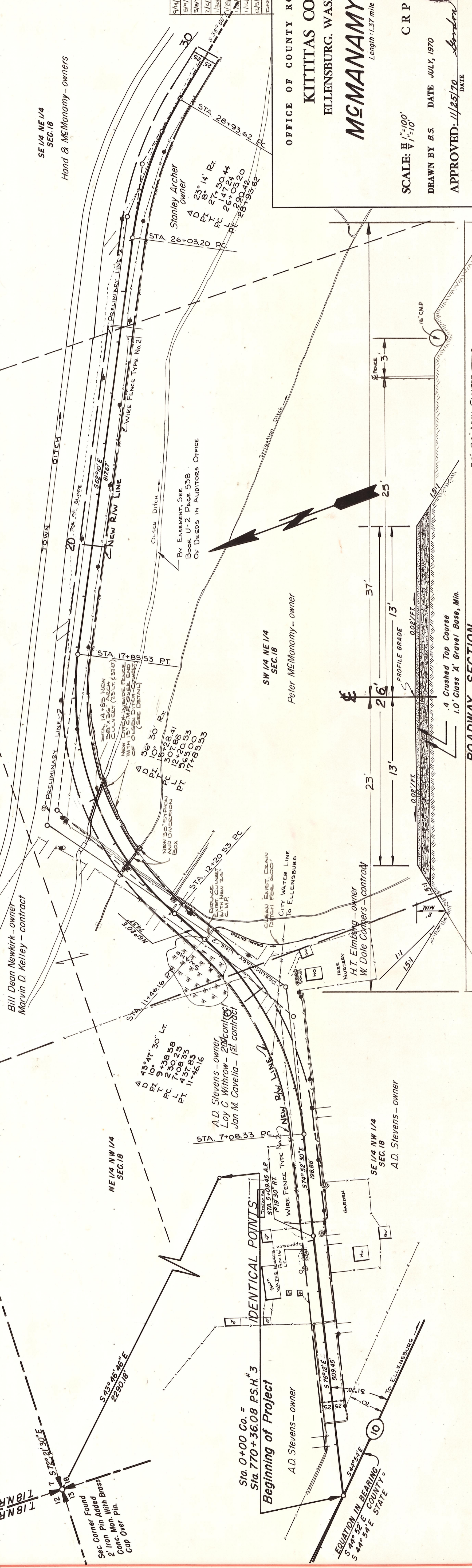
32768" = 6553600'

65536" = 13107200'

131072" = 26214400'

262144" = 52428800'

524288" = 104857600'



OFFICE OF COUNTY ROAD ENGINEER
KITITAS COUNTY
ELLENSBURG, WASHINGTON
McMANAMY ROAD
Length 1.37 mile

SCALE: H 1"=100'
V 1"=10'
DRAWN BY B.S. DATE JULY, 1970 OF 3
APPROVED: 11/25/70 DATE
B.S. DATE



NO.	DATE	REVISIONS	BY
1/1	7/1/70	PRELIMINARY PLAN	B.S.
2/1	7/1/70	FINAL PLAN	B.S.
3/1	7/1/70	FINAL PLAN	B.S.
4/1	7/1/70	FINAL PLAN	B.S.
5/1	7/1/70	FINAL PLAN	B.S.
6/1	7/1/70	FINAL PLAN	B.S.
7/1	7/1/70	FINAL PLAN	B.S.
8/1	7/1/70	FINAL PLAN	B.S.
9/1	7/1/70	FINAL PLAN	B.S.
10/1	7/1/70	FINAL PLAN	B.S.
11/1	7/1/70	FINAL PLAN	B.S.
12/1	7/1/70	FINAL PLAN	B.S.
13/1	7/1/70	FINAL PLAN	B.S.
14/1	7/1/70	FINAL PLAN	B.S.
15/1	7/1/70	FINAL PLAN	B.S.
16/1	7/1/70	FINAL PLAN	B.S.
17/1	7/1/70	FINAL PLAN	B.S.
18/1	7/1/70	FINAL PLAN	B.S.
19/1	7/1/70	FINAL PLAN	B.S.
20/1	7/1/70	FINAL PLAN	B.S.
21/1	7/1/70	FINAL PLAN	B.S.
22/1	7/1/70	FINAL PLAN	B.S.
23/1	7/1/70	FINAL PLAN	B.S.
24/1	7/1/70	FINAL PLAN	B.S.
25/1	7/1/70	FINAL PLAN	B.S.
26/1	7/1/70	FINAL PLAN	B.S.
27/1	7/1/70	FINAL PLAN	B.S.
28/1	7/1/70	FINAL PLAN	B.S.
29/1	7/1/70	FINAL PLAN	B.S.
30/1	7/1/70	FINAL PLAN	B.S.



0 1 2 3 4 5 6 7 8 9 10 11 12 13 14 15 16 17 18 19 20 21 22 23 24 25 26 27 28 29 30

McMANAMY RD.

PLATE 1 PLAN - PROFILE B P 8 STANDARD
ENGINE BROTHER CO. CHICAGO - 1970

18-48

DATE	BY	PLANNED	NOTED	NO.

DATE	BY	PLANNED	NOTED	NO.