

T.17 N.R.19E. W.M.

LINE SHIFT

5' RIGHT
Sta. 0+00 Thru
Sta. 13+64.20

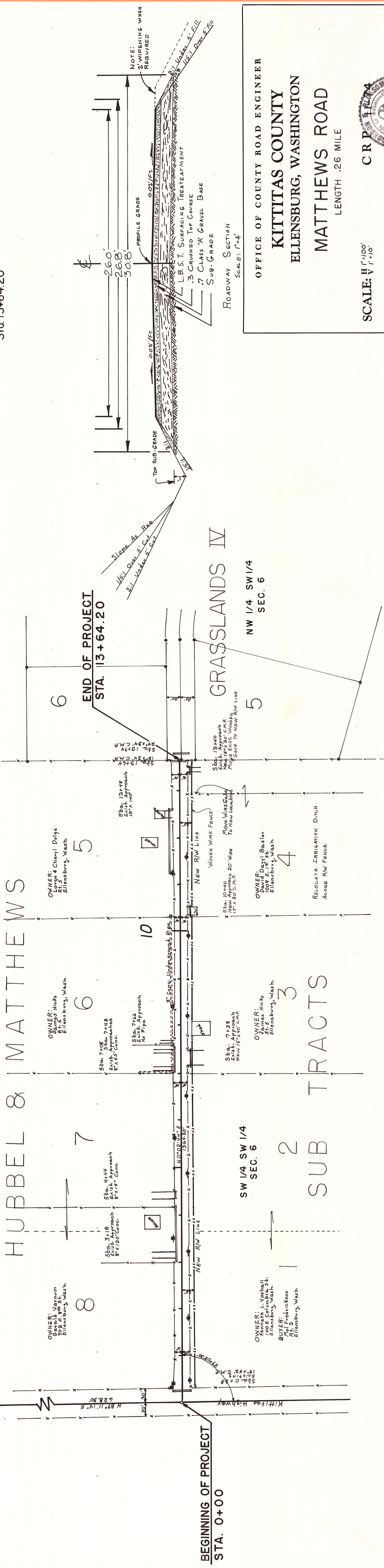
SECTION CORNER
FOUND STEEL PIN

T.17 N.R.18 E.W.M.
T.17 N.R.19 E.W.M.

HUBBEL & MATTHEWS

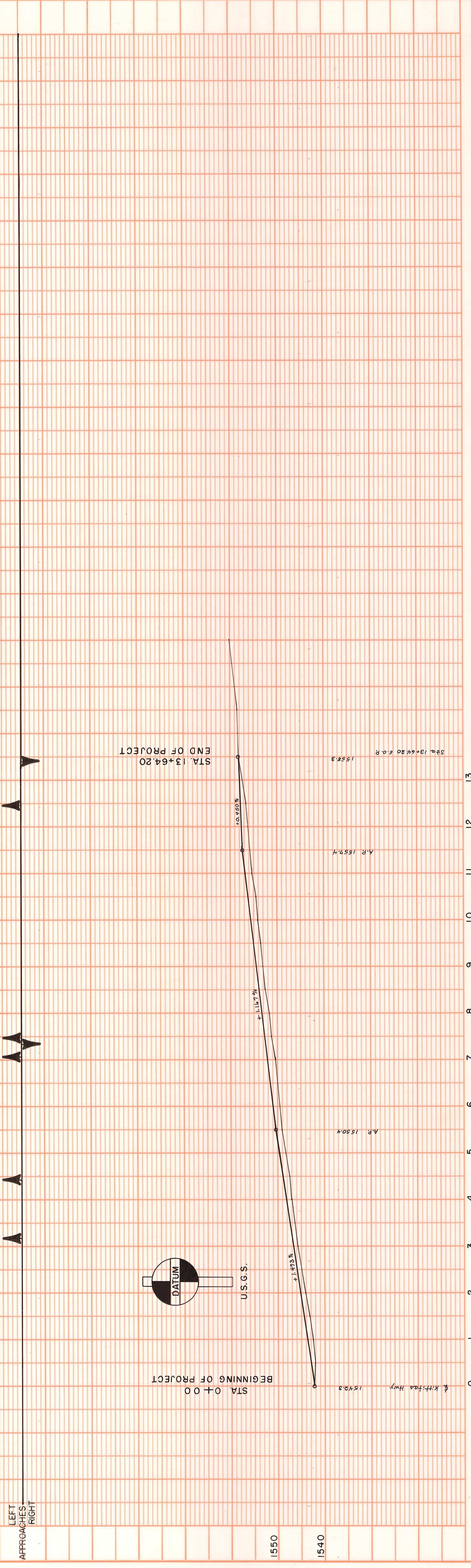
2 TRACTS

GRASSLANDS IV



OFFICE OF COUNTY ROAD ENGINEER
KITITAS COUNTY
ELLENSBURG, WASHINGTON
MATTHEWS ROAD
LENGTH .26 MILE

SCALE: H 1"=100'
V 1"=16'
DRAWN BY R.R. DATE FEB. 1974
APPROVED: 3-3-75 DATE
CRP 1144
SHEET OF 1
COUNTY ROAD ENGINEER



PLAN	
DATE	BY
REVISION	BY
NOTES	
APPROVED	
DATE	

PROFILE	
DATE	BY
REVISION	BY
NOTES	
APPROVED	
DATE	