

Sec. 11 T.18N., R17E., W.M.

- LEGEND**
- WATER METER
 - WATER VALVE
 - ⊕ FIRE HYDRANT
 - EDGE OF PAVEMENT
 - - - R/W LINE
 - IRRIGATION DITCH
 - IRRIGATION WATER CHECK

DEPARTMENT OF PUBLIC WORKS

KITTITAS COUNTY
ELENSBURG, WASHINGTON
MAIN STREET NO. 56400
THORP TOWNSITE

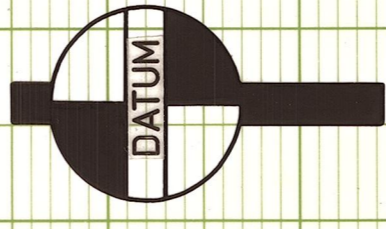
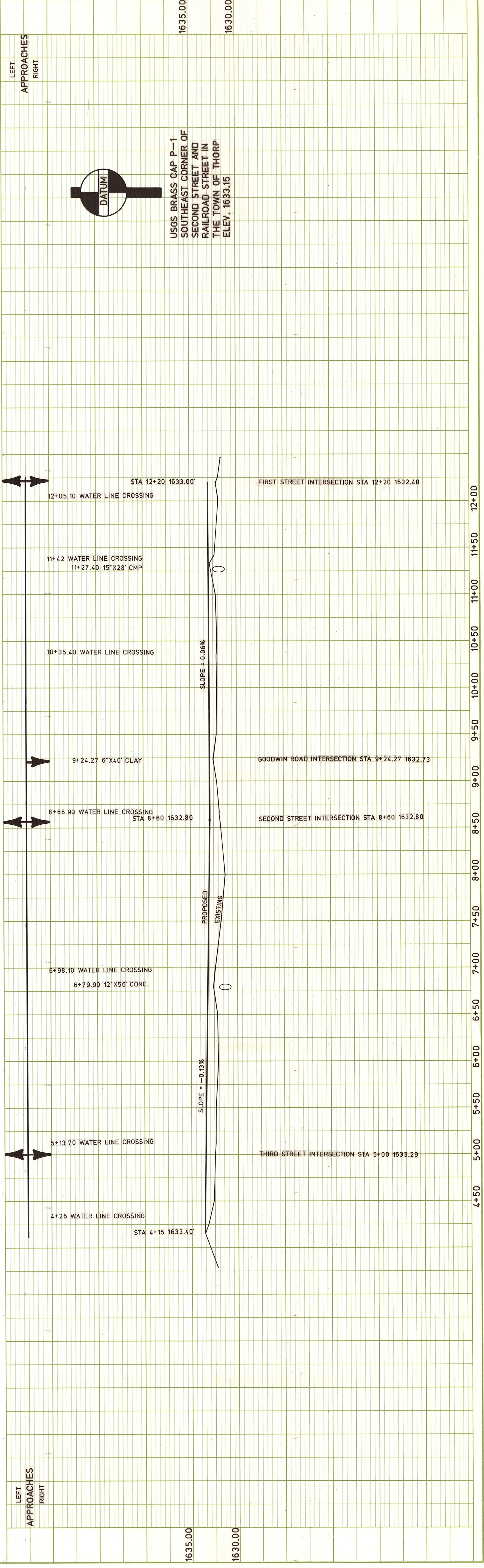
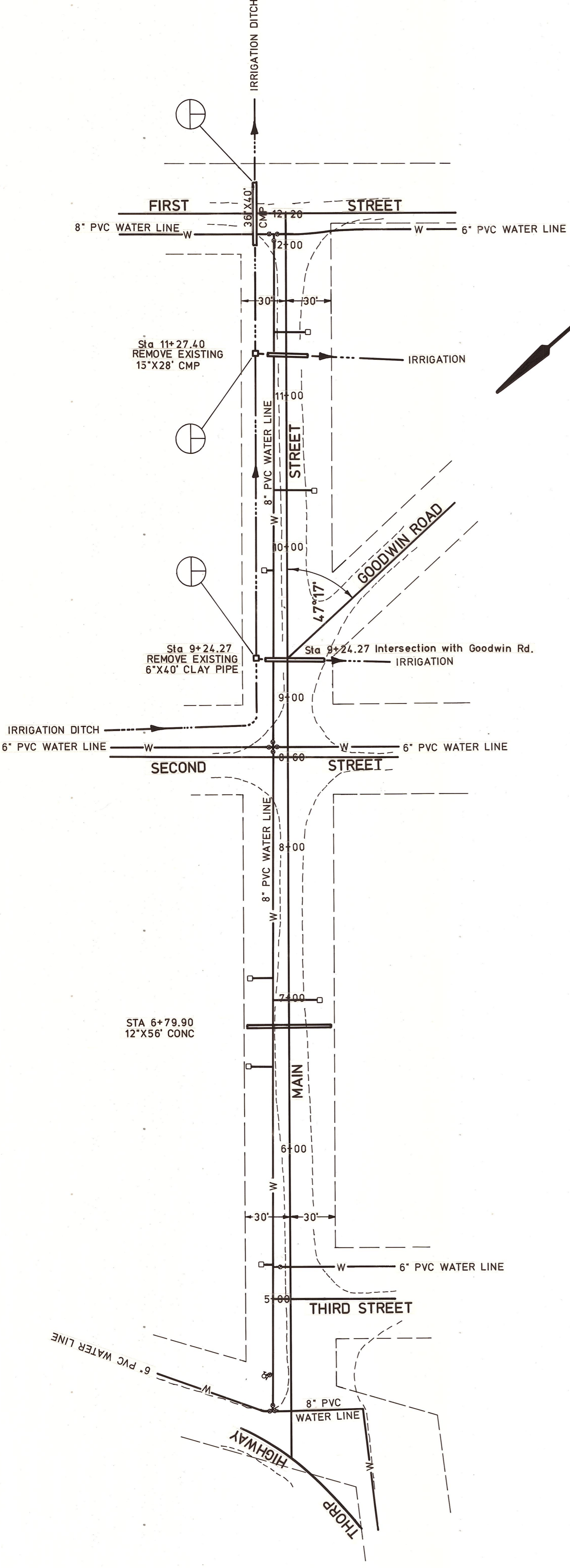
SCALE: H 1"=50'
 V 1"=5'

CRP 74-87

DRAWN BY J.N. DATE OCT. 1987 SHEET OF

APPROVED:

DATE PUBLIC WORKS DIRECTOR



USGS BRASS CAP P-1
 SOUTHEAST CORNER OF
 SECOND STREET AND
 RAILROAD STREET IN
 THE TOWN OF THORP
 ELEV. 1633.15

No.	DATE	BY
NOTE BOOK	ALIGNED CHECKED	PLOTTED
NOTE BOOK	ALIGNMENT CHECKED	PLOTTED
NO. OF WAT. CHECKED		

No.	DATE	BY
NOTE BOOK	GRADES CHECKED	PLOTTED
NOTE BOOK	GRADES CHECKED	PLOTTED
STRUCTURE NOTATIONS CHECKED		