

N.W. 1/4 SW 1/4 Sec 25 T.18 N.R.19
Willis K. Bailes

N.E. 1/4 S.W. 1/4 Sec. 25 T.18 N.R.19
Willis K. Bailes

N.W. 1/4 S.E. 1/4 Sec. 25 T.18 N.R.19
Flora C. Snodgrass

N.E. 1/4 S.E. 1/4 Sec 25 T.18 N.R.19
B. M. Shelton

S. 1/2 N.W. 1/4 Sec. 25 T.18 N.R.19.
Peter Edwards

S. 1/2 N.E. 1/4 Sec 25, T. 18 N. R. 19
G. W. Snodgrass

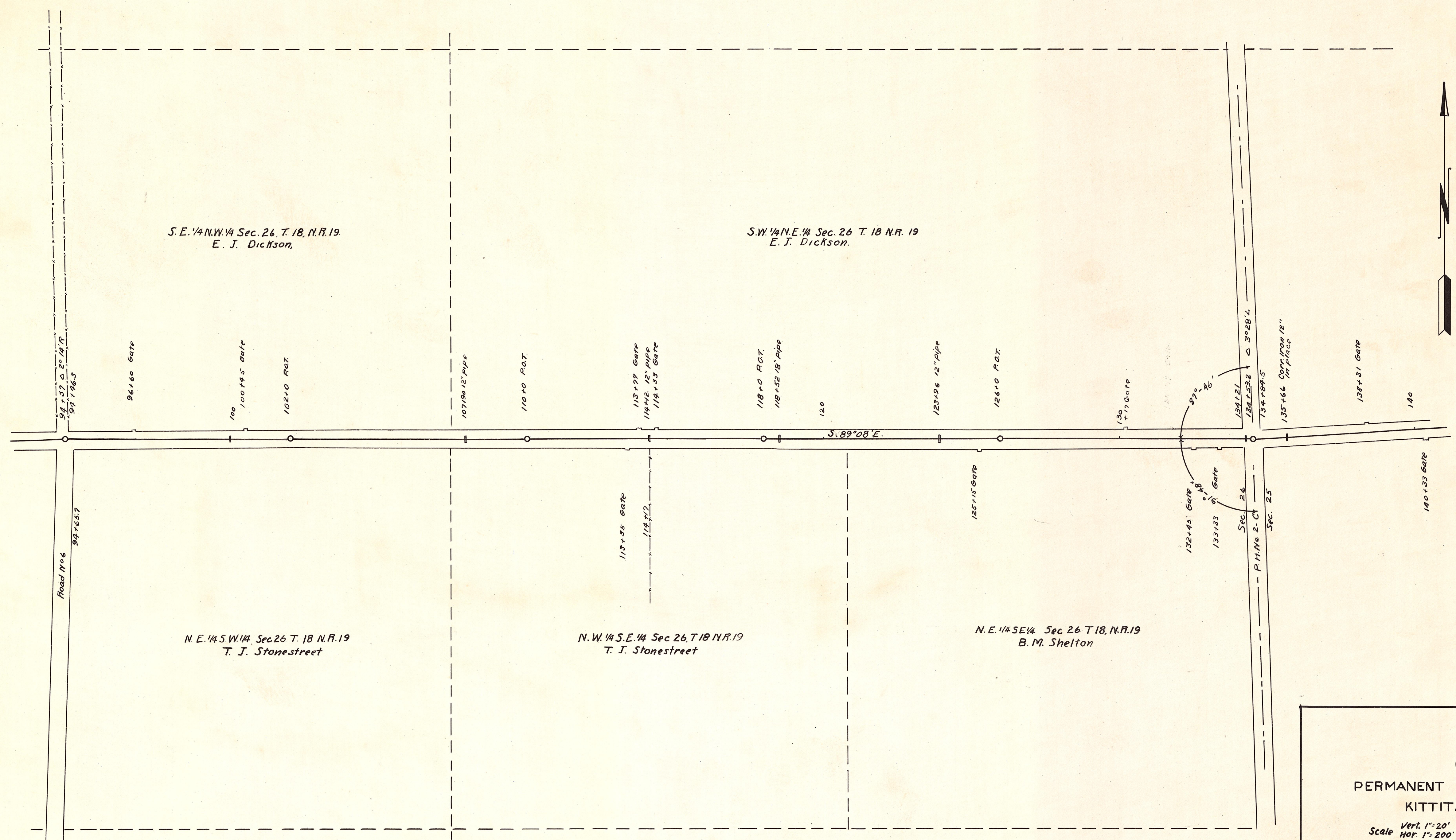
School
No 14

MAP OF
PERMANENT HIGHWAY N°2E
KITITAS COUNTY

Scale: Vert. 1" = 20'
Hor. 1" = 200'
APPROVED: _____
Apr. 1927

HIGHWAY ENGINEER

SHEET 4 OF SHEETS



MAP OF
 PERMANENT HIGHWAY N° 2 'E'
 KITTITAS COUNTY
 Vert. 1" = 20'
 Scale Hor. 1" = 200'
 APPROVED: _____
 HIGHWAY ENGINEER
 SHEET 3 OF 7 SHEETS