

11-6-1

Frank B. Schnebly  
S.E. 1/4 NW 1/4 Sec 27, T. 18, N. R. 19

Flufus C. Schnebly  
SW 1/4 NW 1/4 Sec. 27, T. 18 N. R. 19

T. M. Rollinger  
S. 1/2 N.E. 1/4 Sec. 28, T. 18, N. R. 19

Jean E. Paul  
N.E. 1/4 S.W. 1/4 Sec. 27, T. 18 N. R. 19

Jesse C. Frederick  
N.W. 1/4 SW 1/4 Sec. 27, T. 18, N. R. 19

Joseph Watson  
N. 1/2 S.W. 1/4 Sec. 28, T. 18, N. R. 19

Rd. No. 64  
MAP OF

PERMANENT HIGHWAY N=2-E  
KITTITAS COUNTY

Vert. 1"=20'  
Scale: Hor. 1"=200'  
April 1927  
APPROVED:

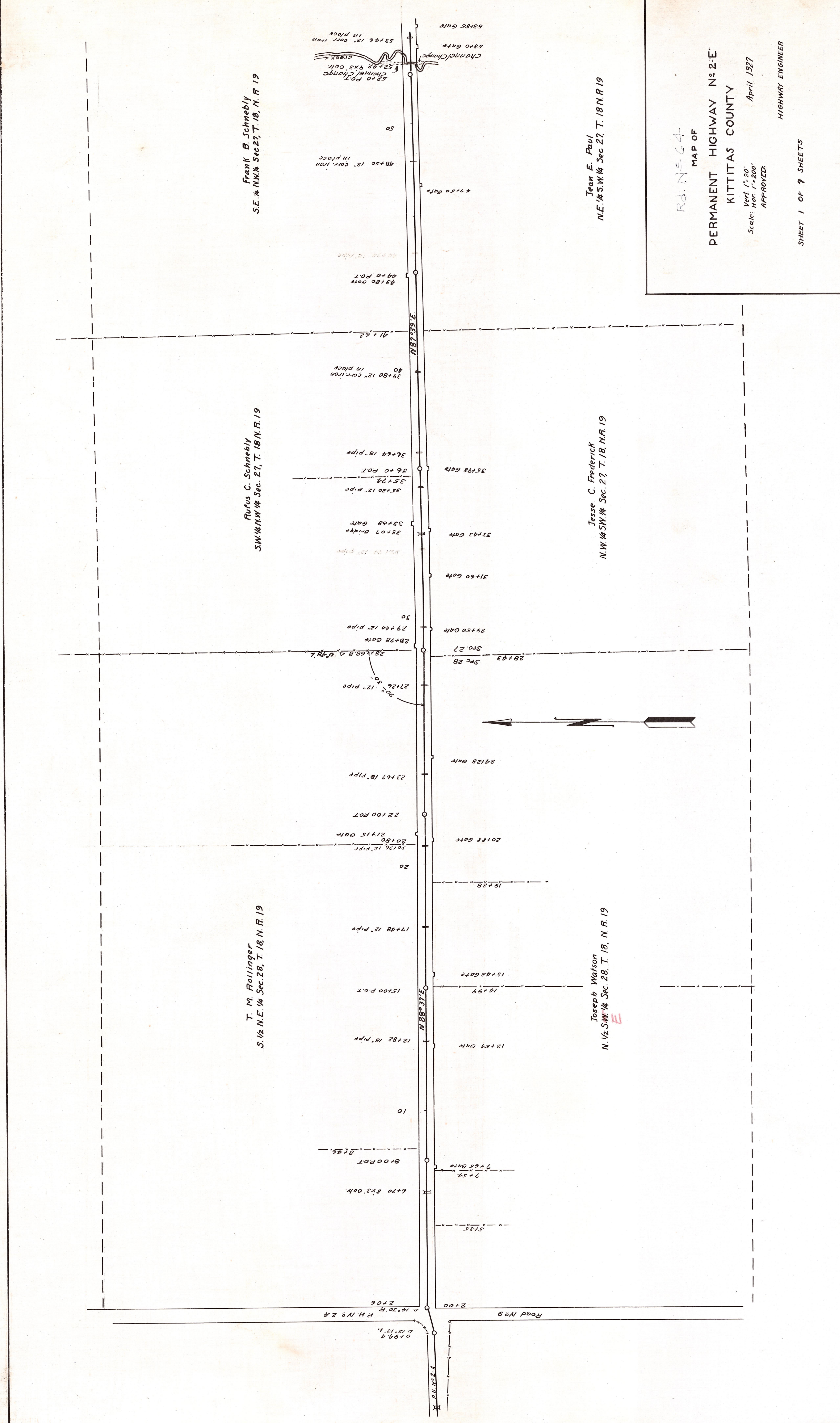
HIGHWAY ENGINEER

SHEET 1 OF 9 SHEETS

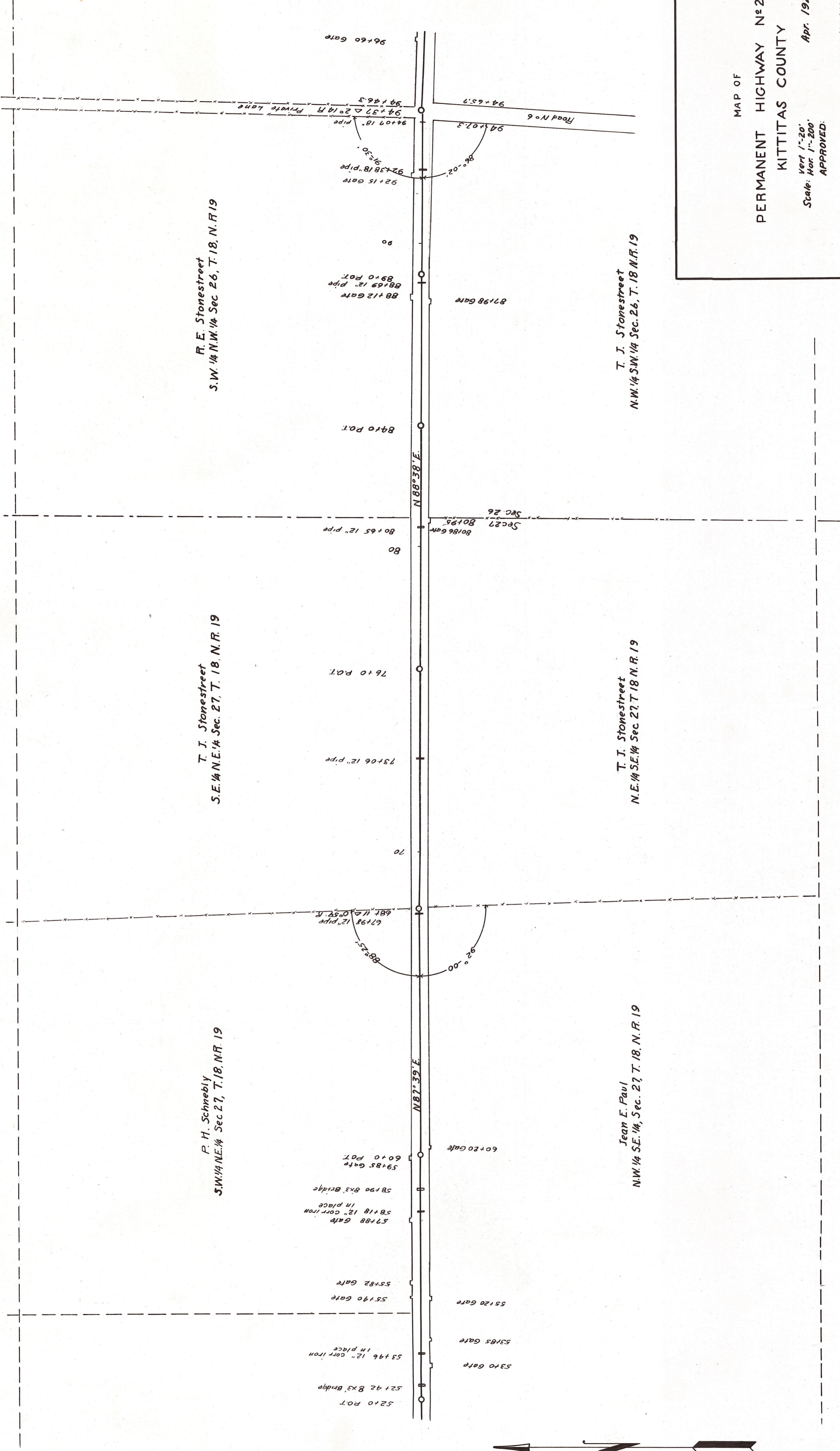
F. SCHNEBLY RD.

21-39

6-15-2



11-25



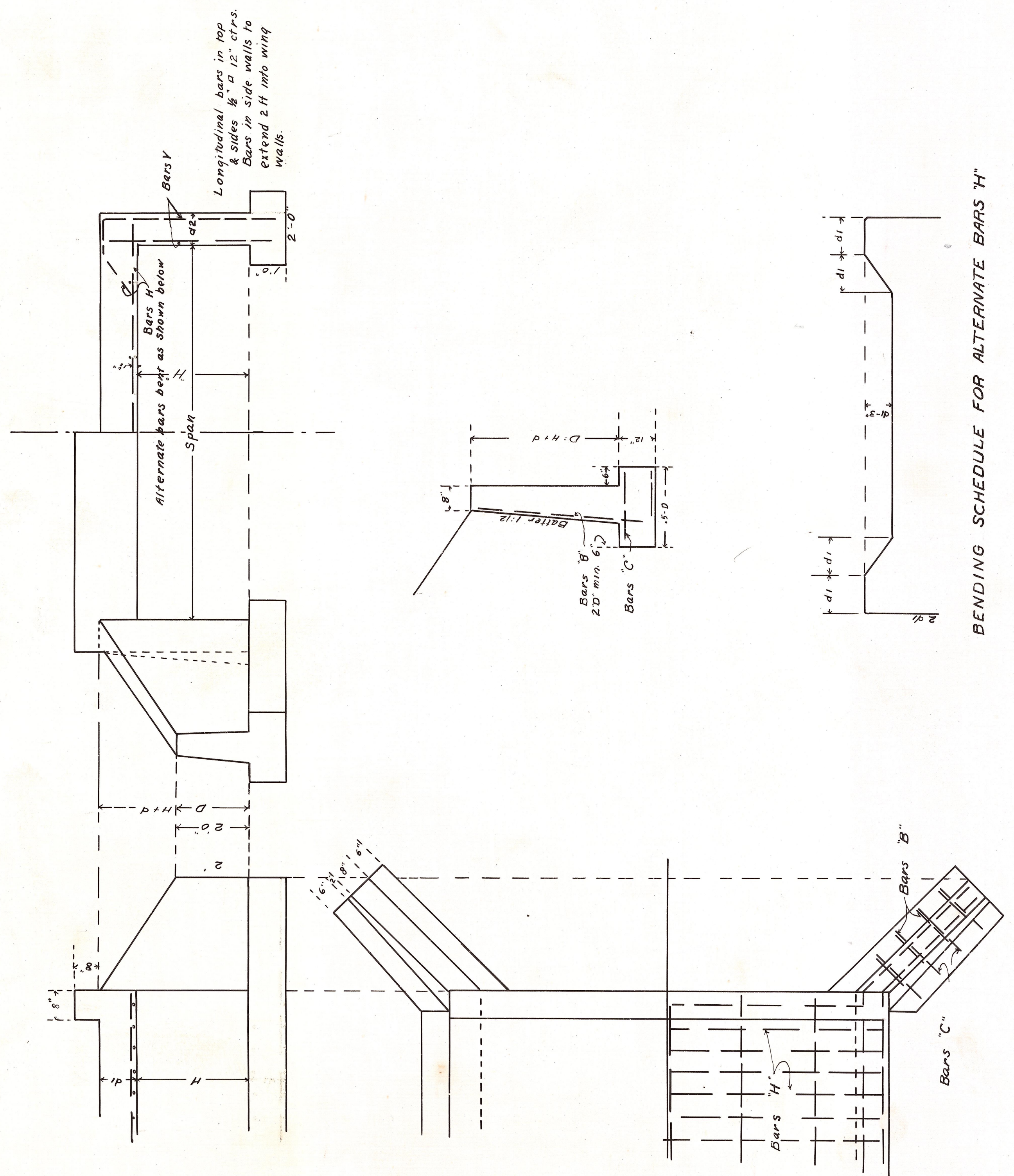
MAP OF  
 PERMANENT HIGHWAY N<sup>o</sup> 2 E  
 KITTITAS COUNTY  
 Vert 1"=20'  
 Scale: Hor 1"=200'  
 APPROVED:  
 Apr. 1927  
 HIGHWAY ENGINEER

SHEET 2 OF 7 SHEETS

F. SCHNEBLY RD. ( LYONS RD. ) 21-39

4-15-2

11-6-1  
E



SPAN	H Height Ft.	Slab Thick in.	REINFORCEMENT			WING WALLS			
			Bars "H" Size	Bars "H" Space in.	Bars "Y" Space in.	Length L	Bars "B" Space in.	Bars "C" Space in.	
8	3	11	3/4"	5	12	3' 11"	4' 1"	10 1/2"	10
10	3	12	3/4"	5 1/2"	12	4' 2 1/2"	4' 8"	10 1/2"	10

NOTE:  
 All concrete to be Class "B".  
 Maximum size of aggregate to be 3".  
 All reinforcing bars to be deformed.  
 Bars to be spaced not less than 2 diameters from center of bar to surface of concrete, with minimum of 1 1/2".

STANDARD PLAN  
 REINFORCED CONCRETE SLAB BRIDGE  
 PERMANENT HIGHWAY N° 2·E·  
 KITTITAS COUNTY  
 Scale 1/2" = 1'  
 APPROVED: Jan. 1927  
 HIGHWAY ENGINEER  
 SHEET 5 OF 7 SHEETS