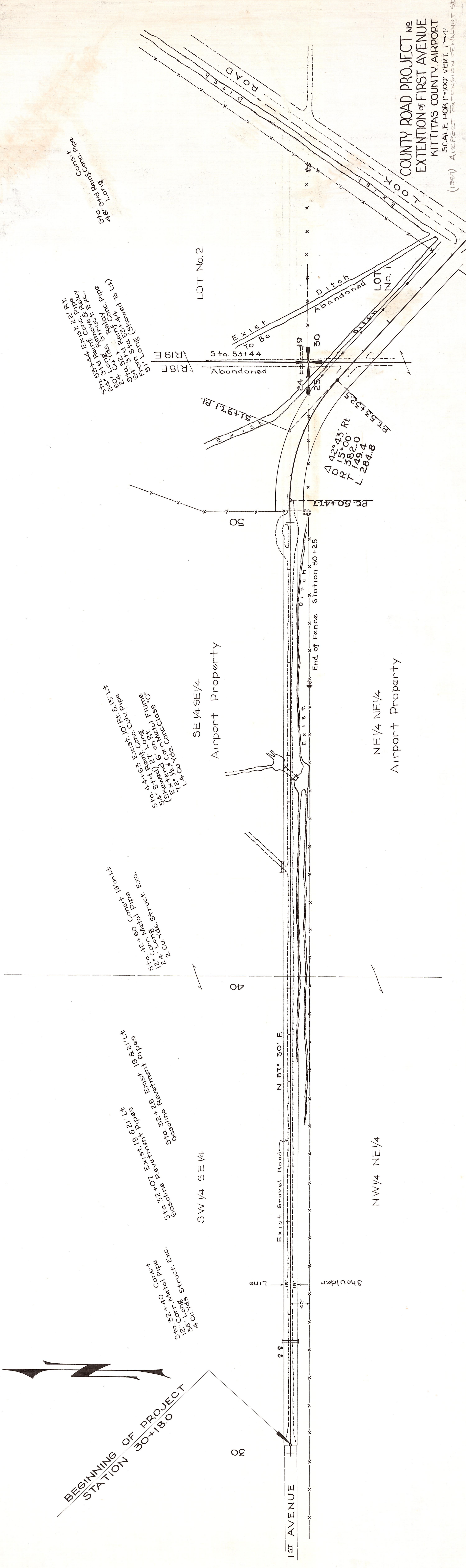


T. 18 N. R. 18 & 19 E. W.M.

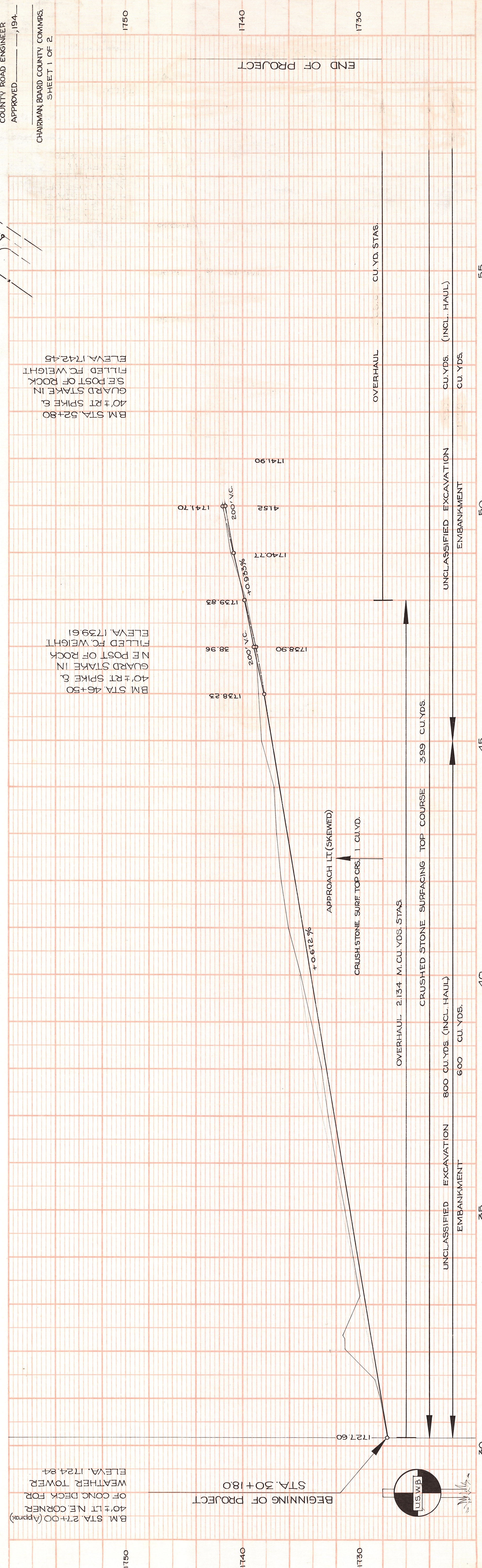
BEGINNING OF PROJECT
STATION 30+180



SE 1/4 SE 1/4
SW 1/4 SE 1/4
NW 1/4 NE 1/4
NE 1/4 NE 1/4
Airport Property

COUNTY ROAD PROJECT No.
EXTENSION OF FIRST AVENUE
KITITIAS COUNTY AIRPORT
SCALE: HORIZ. 1"=100' VERT. 1"=4'
(1957) AIRPORT EXTENSION OF VANUOT ST.

COUNTY ROAD ENGINEER
APPROVED _____, 194____
CHAIRMAN, BOARD COUNTY COMMS.
SHEET 1 OF 2.



B.M. STA. 27+00 (Approx)
40± RT NE CORNER
OF CONC DECK FOR
WEATHER TOWER
ELEV. 1724.84

B.M. STA. 46+50
40± RT SPIKE &
GUARD STAKE IN
NE POST OF ROCK
FILLED FC WEIGHT
ELEV. 1739.61

B.M. STA. 52+80
40± RT SPIKE &
GUARD STAKE IN
SE POST OF ROCK
FILLED FC WEIGHT
ELEV. 1742.45

STATION 30+180
ELEV. 1727.60

STATION 38+96
ELEV. 1738.90

STATION 41.52
ELEV. 1740.77

STATION 45.152
ELEV. 1741.70

STATION 50+25
ELEV. 1741.90

STATION	OVERHAUL	UNCLASSIFIED EXCAVATION	EMBANKMENT	CRUSHED STONE SURFACING TOP COURSE	OVERHAUL	UNCLASSIFIED EXCAVATION	EMBANKMENT	CRUSHED STONE SURFACING TOP COURSE	OVERHAUL	CU. YDS. (INCL. HAUL)	CU. YDS.	CU. YD. STAS.
30-40		800	600	2.134								
40-45												
45-50												
50-55												

DATE	BY	REVISION
10/27/47	R.C. STANTON	DESIGN
11/1/47	C.H. WELBORN	CONSTRUCTION

DATE	BY	REVISION
10/27/47	R.C. STANTON	DESIGN
11/1/47	C.H. WELBORN	CONSTRUCTION