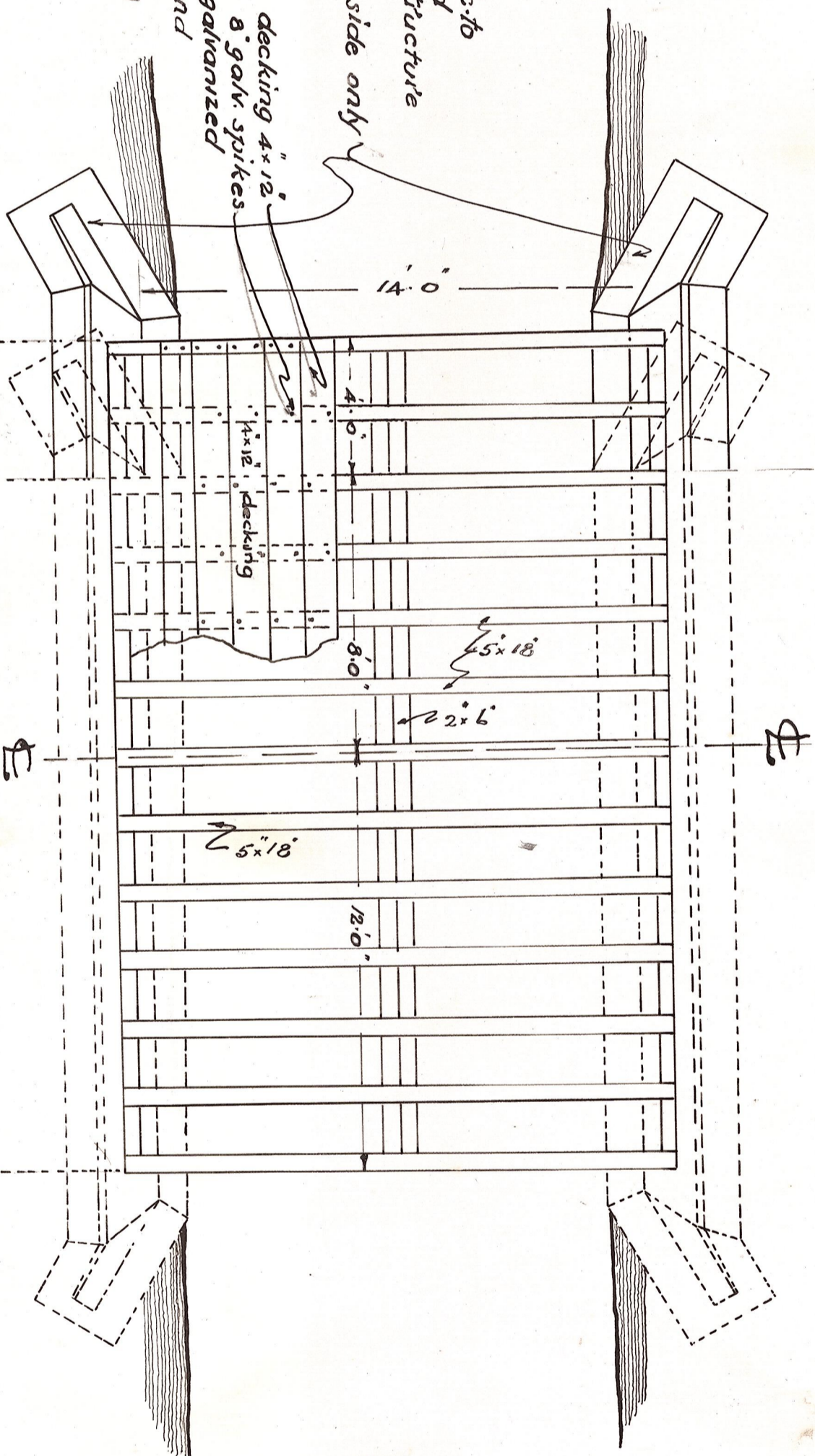
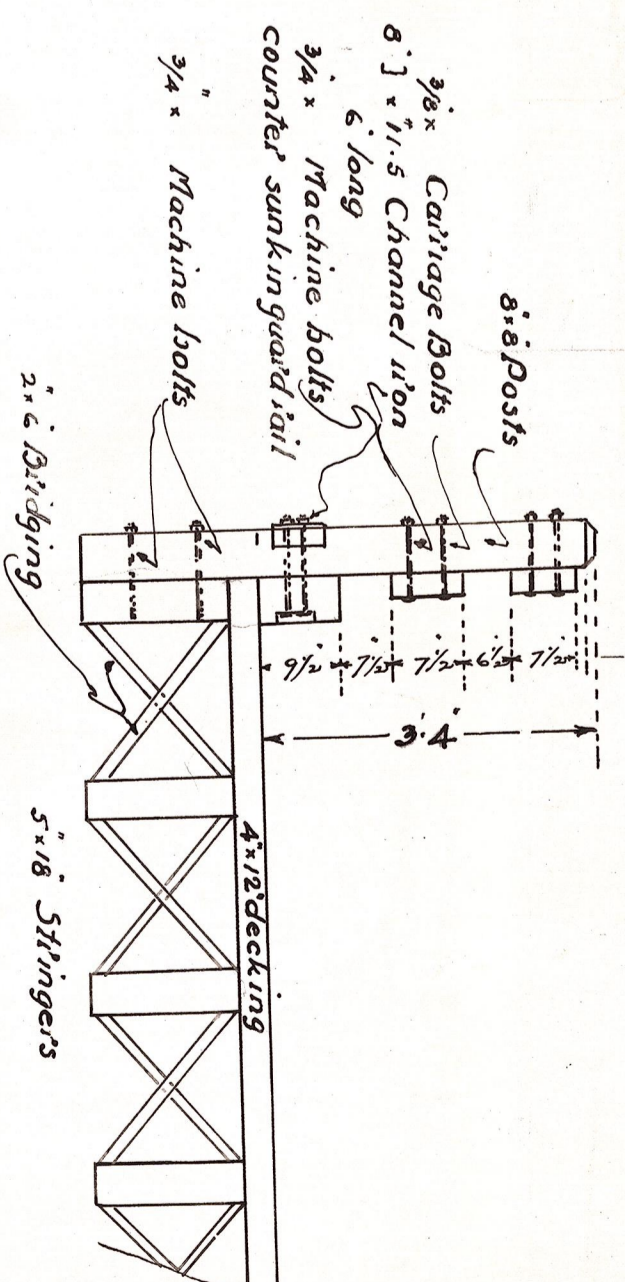


NOTE  
Existing deck, handrail, etc. to be removed and replaced to conform with new structure widening of bridge on left side only

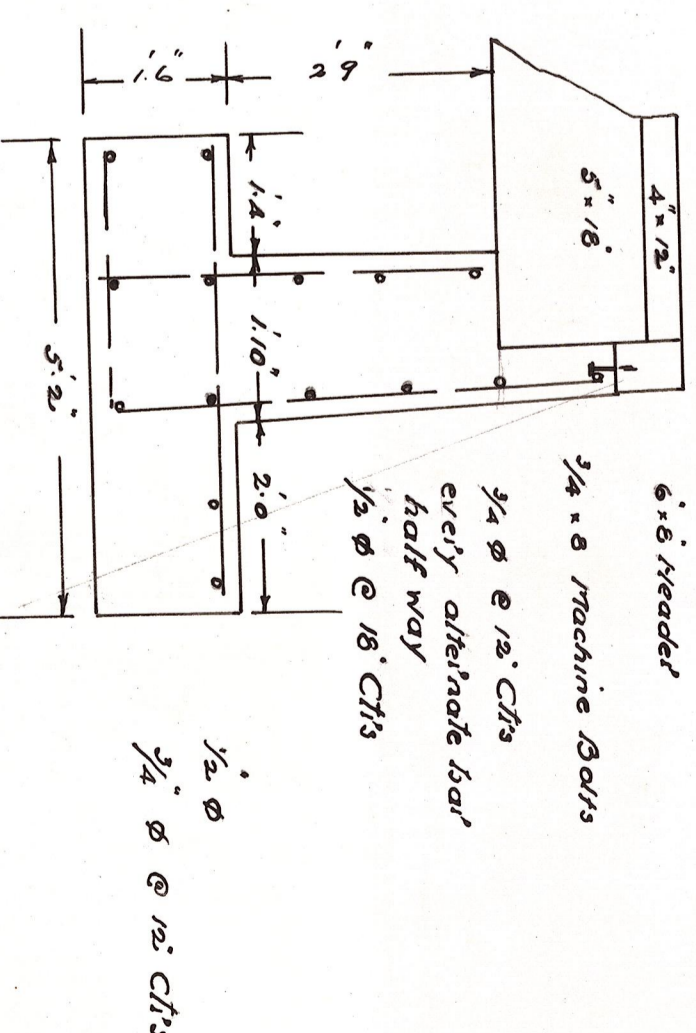
All hardware and nails to be galvanized  
Stringer ends, both edges to be bridged to be cleared  
Brush treated (two coats)  
handrail, posts and wheel guards to have two coats Federal Yellow Paint



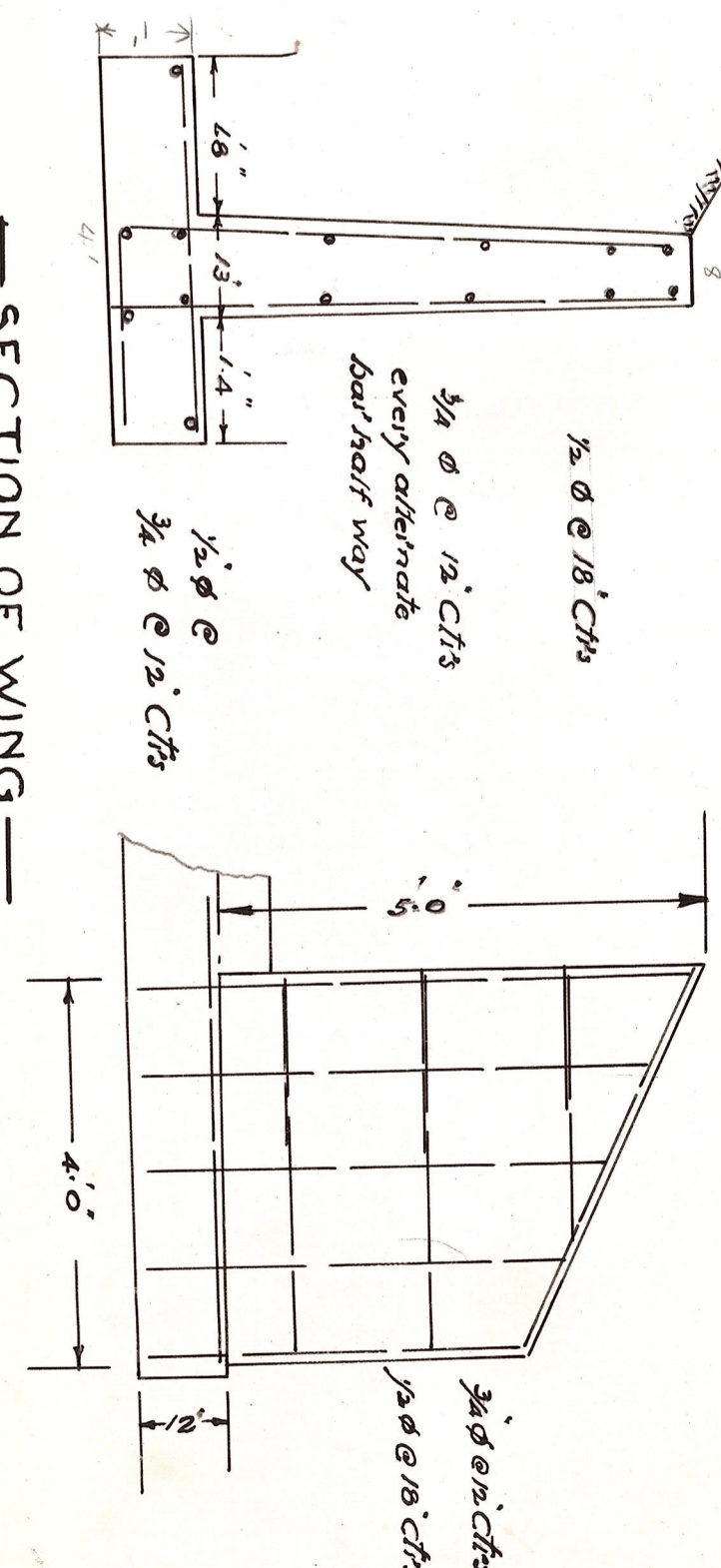
PLAN OF BRIDGE  
— CASCADE CANAL  
Sta. 14.5+09.5 - Sta. 14.5+33.5  
SCALE 1/4\"/>



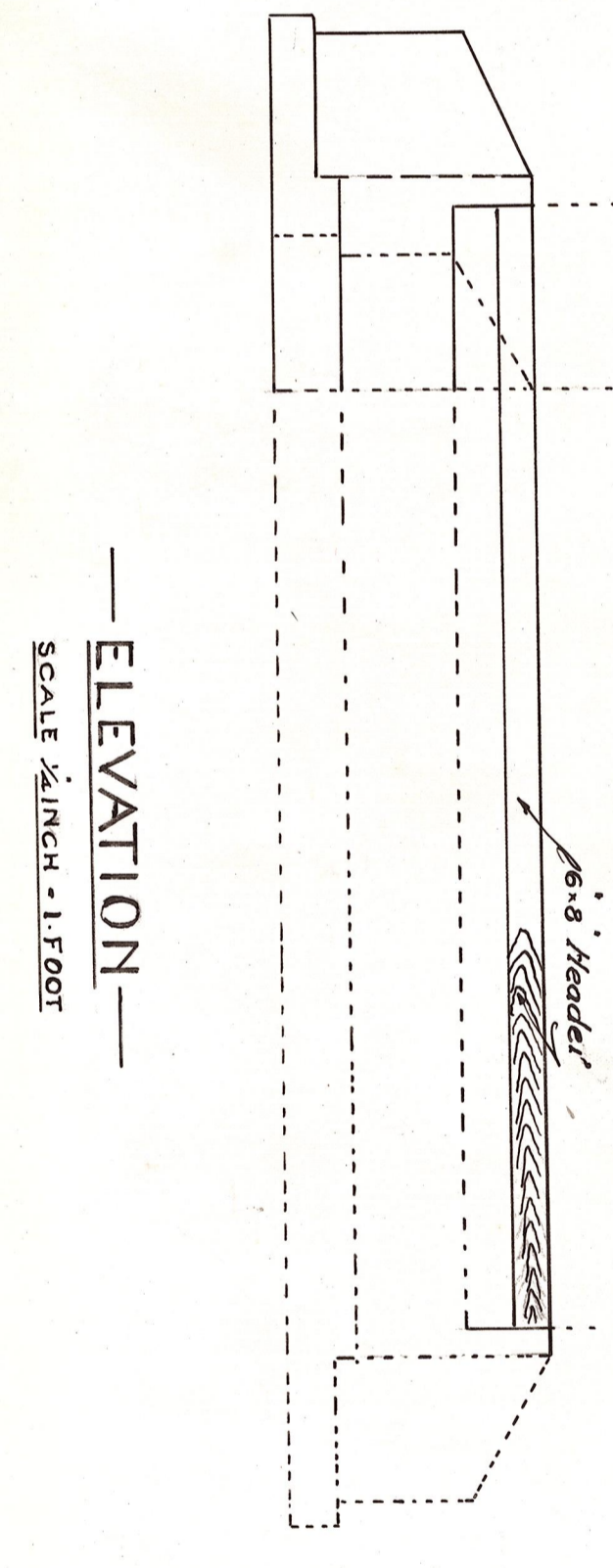
END SECTION  
SCALE 3/8\"/>



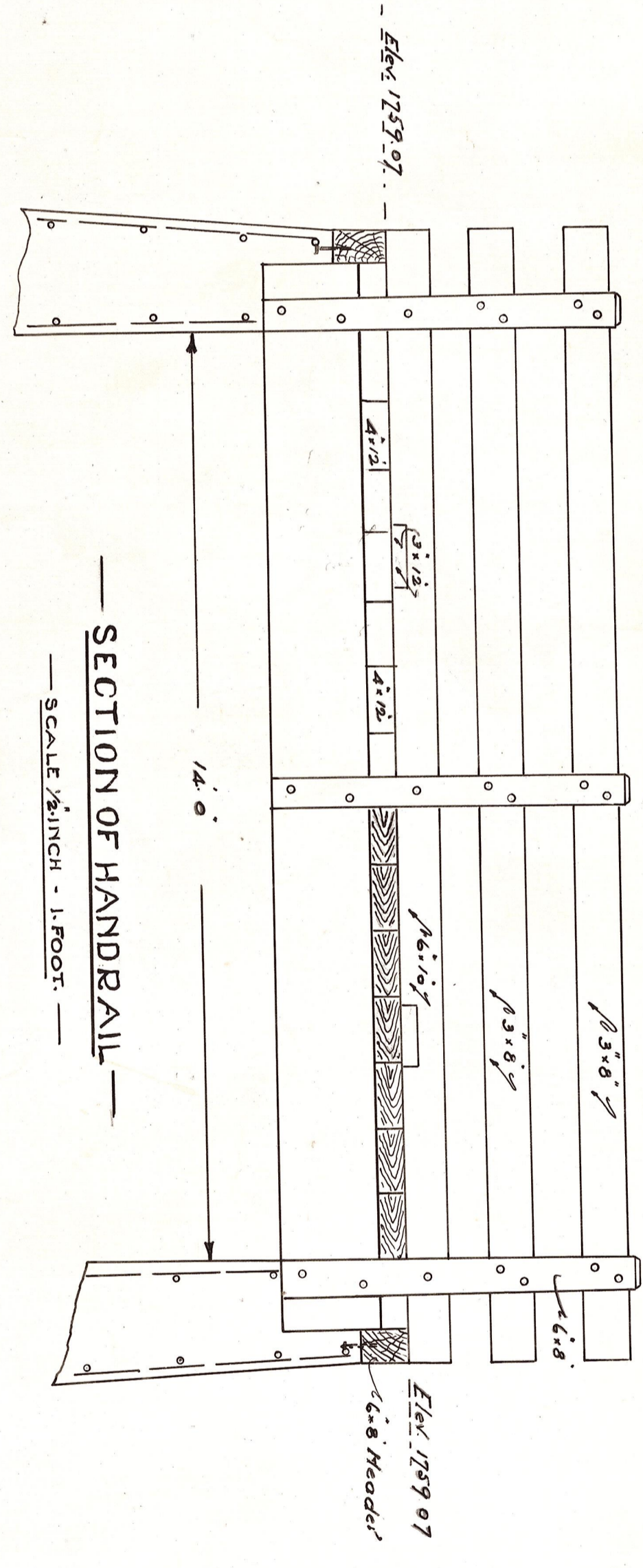
SECTION  
SCALE 1/2\"/>



SECTION OF WING  
SCALE 1/2\"/>



ELEVATION  
SCALE 1/2\"/>



SECTION OF HANDRAIL  
SCALE 1/2\"/>

5376.3 FEET — SUMMARY — 1.018 MILES.

MILE	EXCAVATION		SELECT RDBY BORROW (in Place) Cu.Yds.	HAUL X100 Cu.Yds. Sta.	ROCK 3/4 Minus (in Cu.Yds)	CONCRETE CLASS B Cu.Yds.	REIN. STEEL Lbs.	CONCRETE PIPE			TIMBER AND PLANK M.B.M.	CLEARING AND GRUBBING LUMP SUM	
	CLASS 'A' Cu.Yds.	CLASS 'D' Cu.Yds.						12\"/>					
3(PART)	70	10	81	4030	1740	1200	960	141	51	4.	LUMP SUM		
4(PART)	240	10	80	2170	150	720	100	42	183		LUMP SUM		
TOTALS	310	20	161	6200	150	2460	13.84	1060	183	183	51	4.	LUMP SUM

COUNTY COMMISSIONERS:

CHAIRMAN  
MEMBER  
MEMBER

APPROVED  
COUNTY ROAD ENGR.  
SHEET 1 OF 3 SHEETS

KITTITAS COUNTY  
STATE OF WASHINGTON  
COUNTY ROAD PROJECT NO. 15