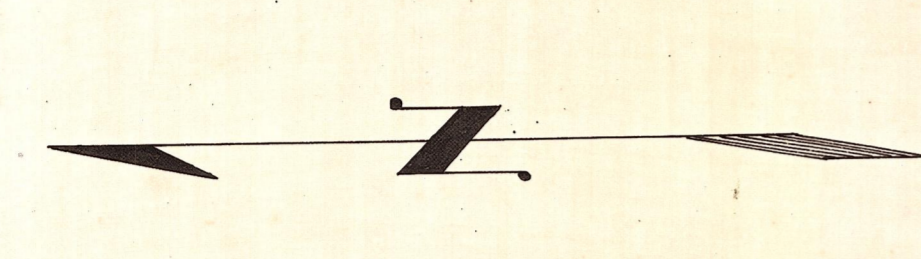
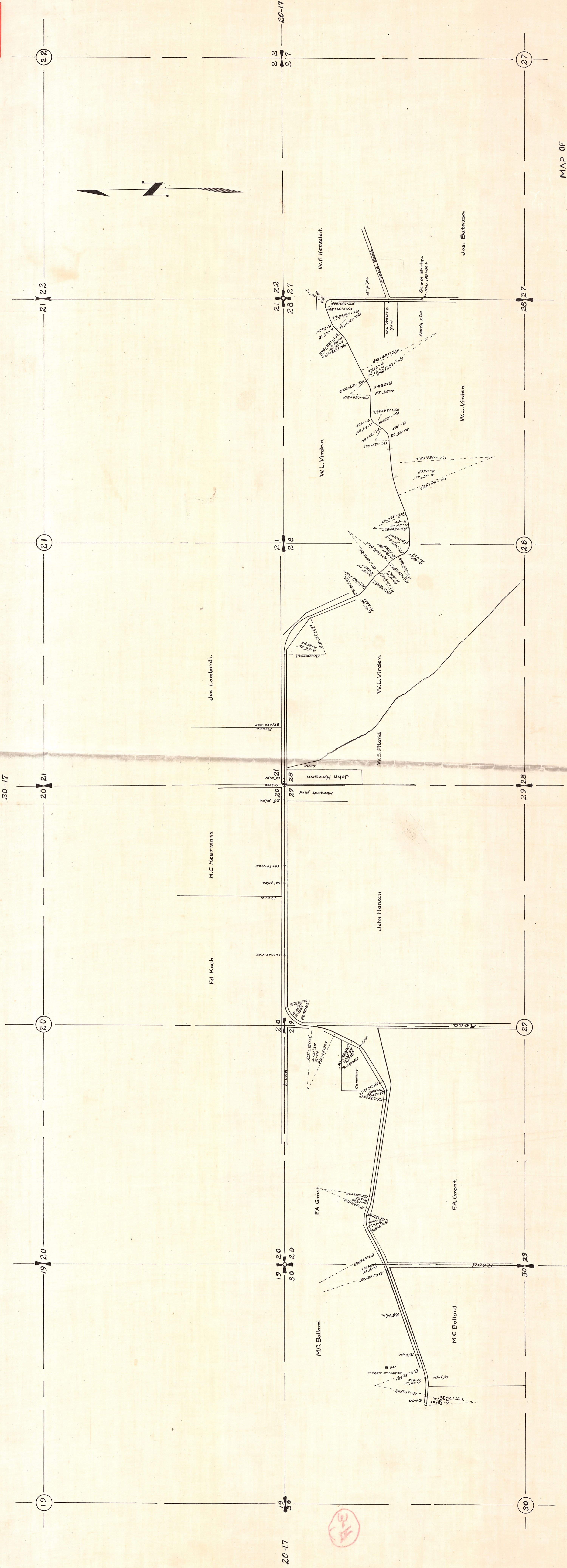


4-11-4
11-6-3



MAP OF
 PERMANENT HIGHWAY NO. 3-A
 KITTITAS COUNTY
 EAST OF CLE ELUM
 Scale 1"=400'
 Approved
J. G. ... 1916
 Highway Commissioner

14-12
 E. W. BALLARD HILL RDS. (LEY RD.)
 2-15-3