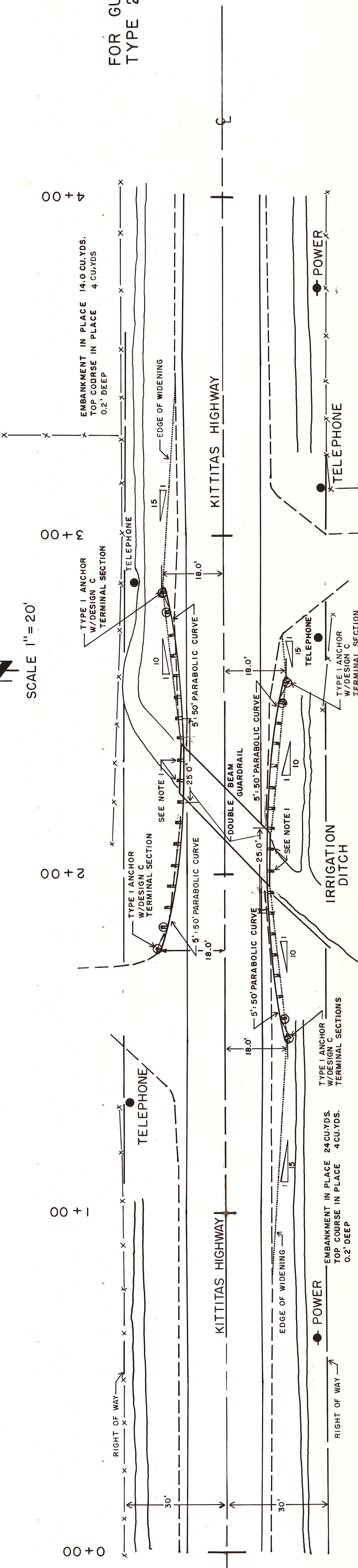


FOR GUARDRAIL POST & BLOCK
 TYPE 2 - SEE SHEET 4 OF 14



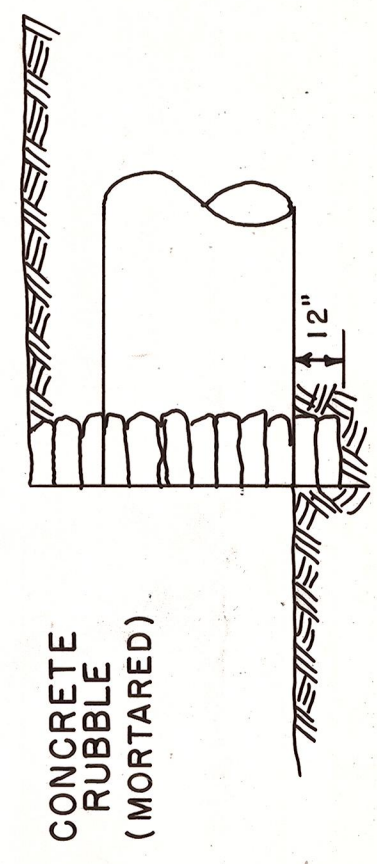
KITTITAS HIGHWAY
 BRIDGE NO. 79052

NOTES

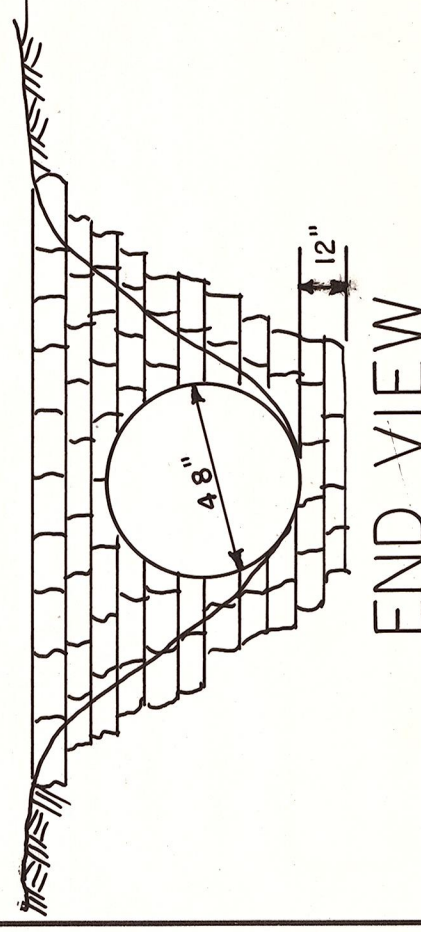
- NOTE 1: INSTALL 4 EACH NEW W6x15 BRIDGE GUARDRAIL POST TYPE 2 SEE PAGE 3/ SPECIAL PROVISIONS. 2 POST PER SIDE, MOUNTED SYMMETRICALLY ABOUT CENTER OF SPAN.
- NOTE: REMOVE EXISTING GUARDRAIL AND POSTS.

QUANTITIES

TYPE I GUARDRAIL INCLUDING TERMINAL SECTIONS	168.5 LINEAL FT.
DOUBLE BEAM GUARDRAIL TYPE I ANCHOR	50. LINEAL FT. 4 EACH
TOP COURSE IN PLACE EMBANKMENT IN PLACE BRIDGE GUARDRAIL POSTS TYPE 2 INSTALLED	12 CUBIC YARDS 54 CUBIC YARDS 4 EACH



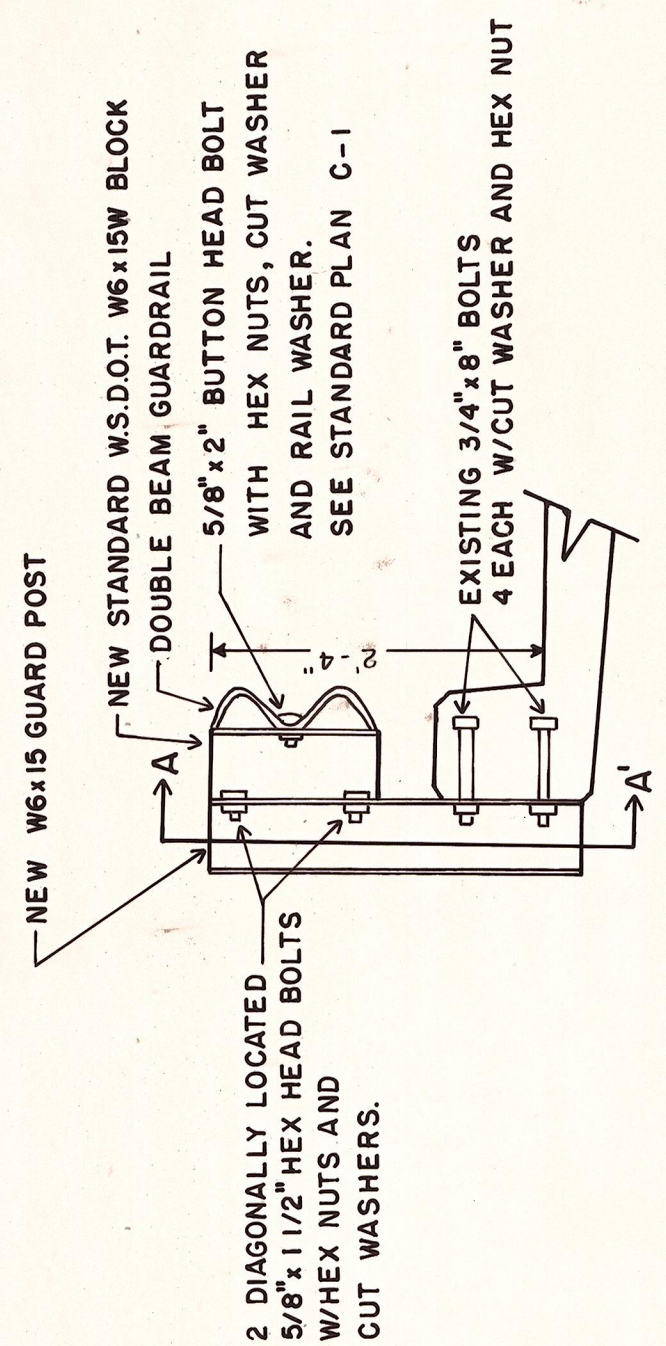
SIDE VIEW



END VIEW

CONCRETE RUBBLE HEADWALL (MORTARED)

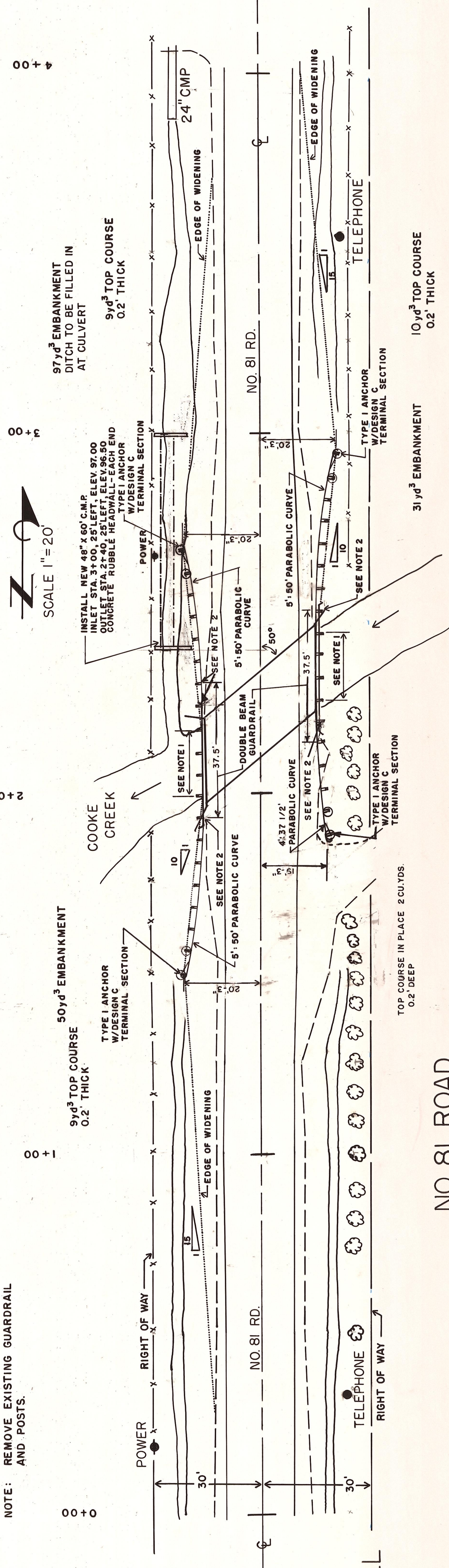
SCALE: 1" = 4"



DETAIL A

BRIDGE GUARDRAIL POST TYPE I

SCALE: 3/4" = 1'-0"



NO. 81 ROAD
 BRIDGE NO. 79011

NOTES

- NOTE 1: INSTALL NEW W6x15 GUARDPOST TYPE I 8 EACH PER DETAIL A.
- NOTE 2: REMOVE EXISTING POST SET IN CONCRETE AND REPLACE WITH 8" x 8" WOOD POST AND STANDARD BLOCK.
- NOTE 3: REMOVE EXISTING GUARDRAIL AND POST

QUANTITIES

TYPE I GUARDRAIL W/TERMINAL SECTION	156 LINEAL FT.
DOUBLE BEAM GUARDRAIL	75 LINEAL FT.
TYPE I ANCHOR EMBANKMENT IN PLACE TOP COURSE	4 EACH 178 yd ³ 30 yd ³
SCHEDULE A 48" PIPE IN PLACE	60 LINEAL FT.
BRIDGE GUARDRAIL POST TYPE I INSTALLED CONCRETE RUBBLE HEADWALL-MORTARED	8 EACH 2 EACH



DEPT OF PUBLIC WORKS
KITTITAS COUNTY
 ELLENSBURG, WASHINGTON
 KITTITAS HIGHWAY BRIDGE ET. AL.
 APPROACH GUARDRAILS

SCALE: 1" = 20'
 CR P 13-80

DRAWN BY DLT DATE SEPT. 1981 SHEET 5 OF 14
 APPROVED: *[Signature]* DATE 4/27/83 DIRECTOR OF PUBLIC WORKS