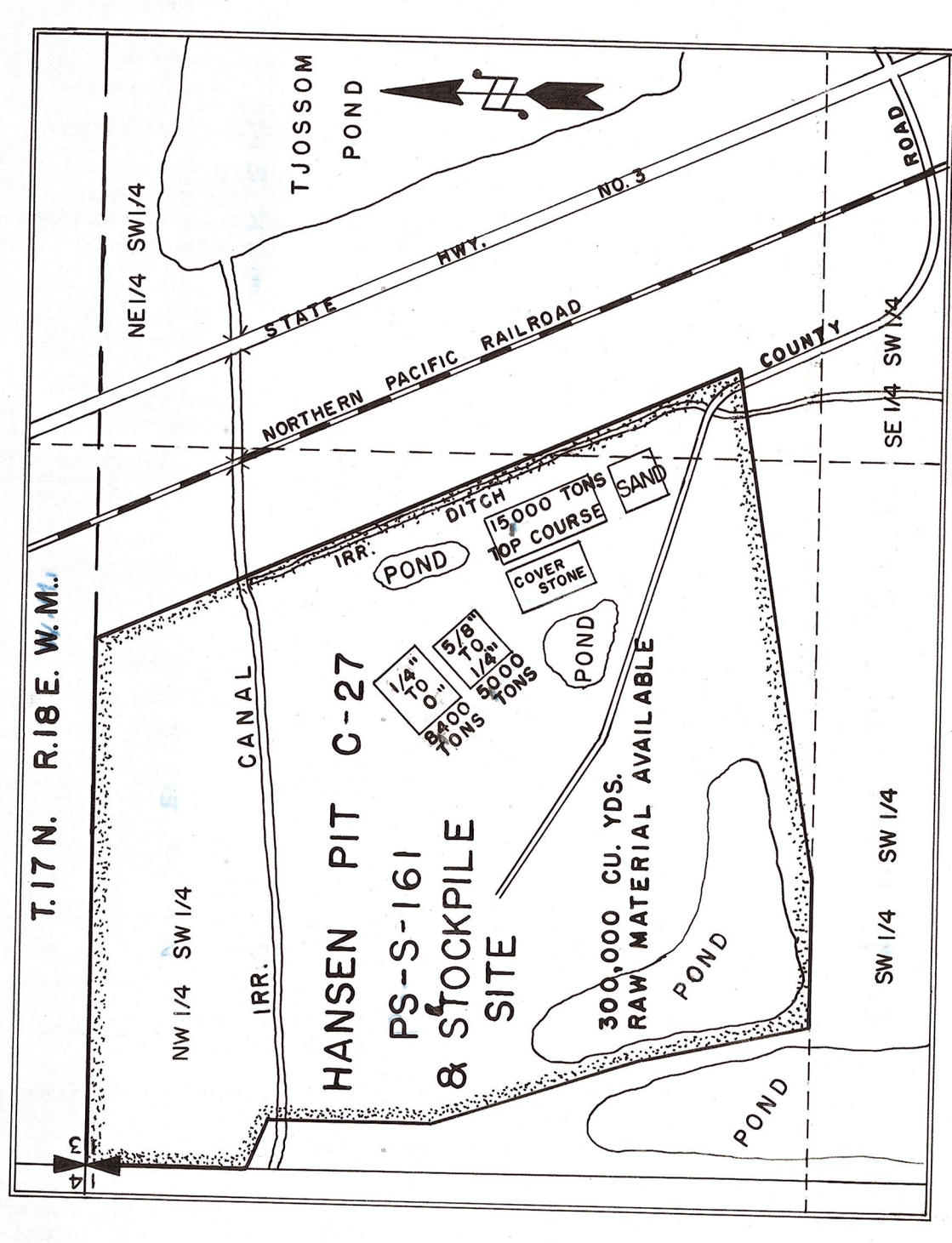
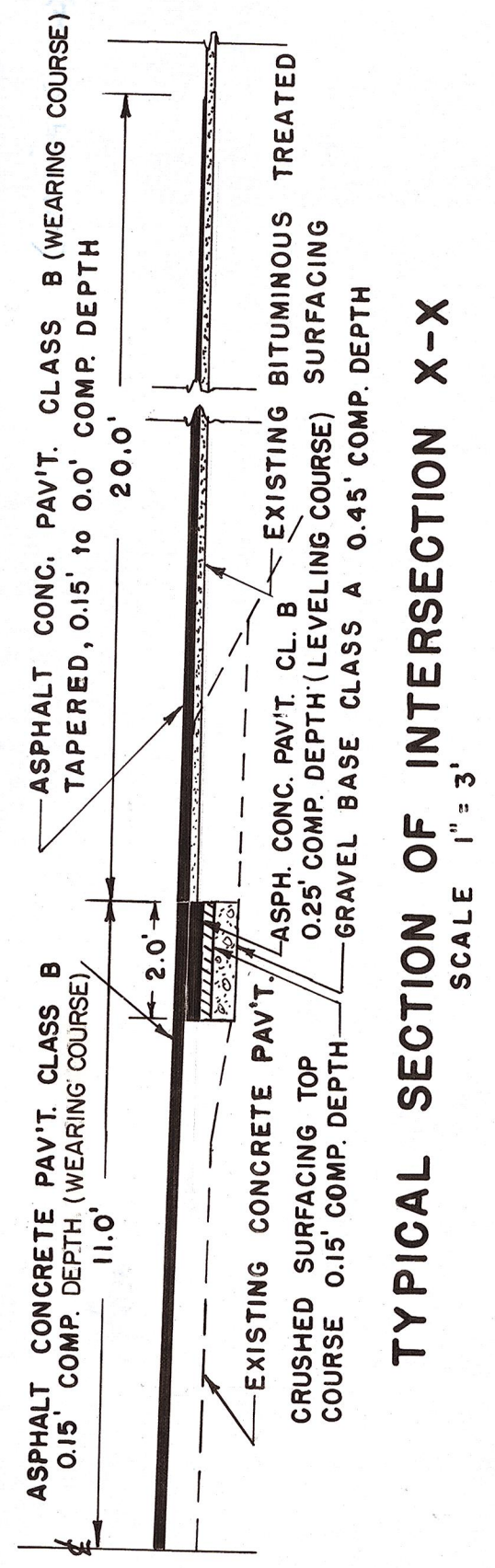


VICINITY MAP
SCALE 1" = 2000'

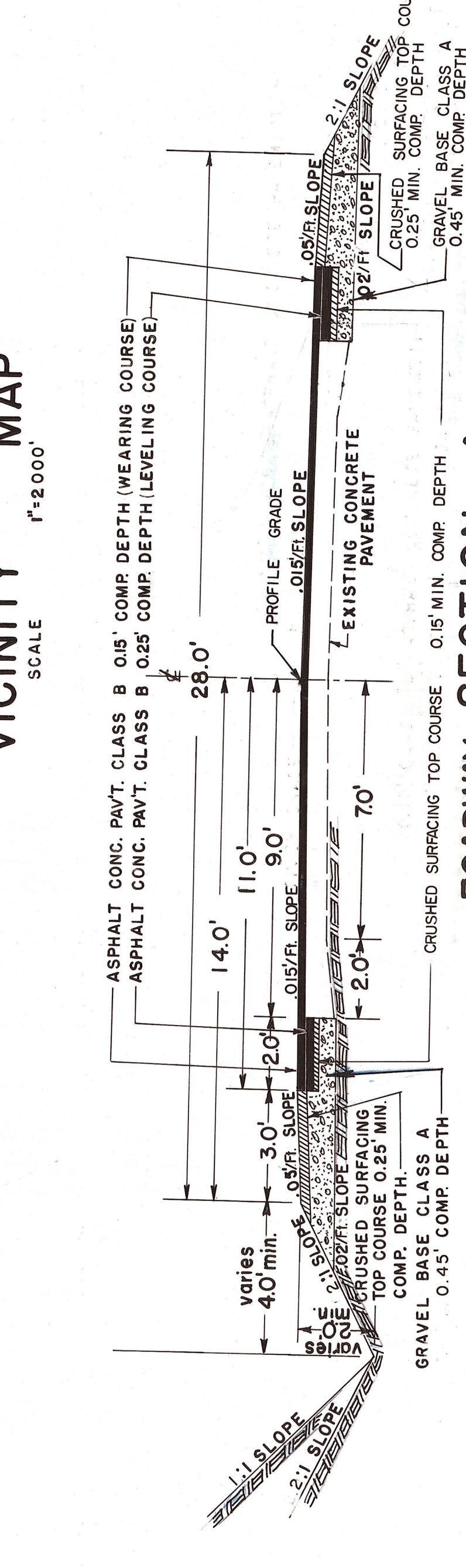


PIT SITE
SCALE 1" = 300'

SOURCE FOR 8 GRAVEL BASE CLASS A CRUSHED SURFACING TOP COURSE. MINERAL AGGREGATE FOR ASPHALT CONCRETE PAV'T. PRIME COATE AGGREGATE.

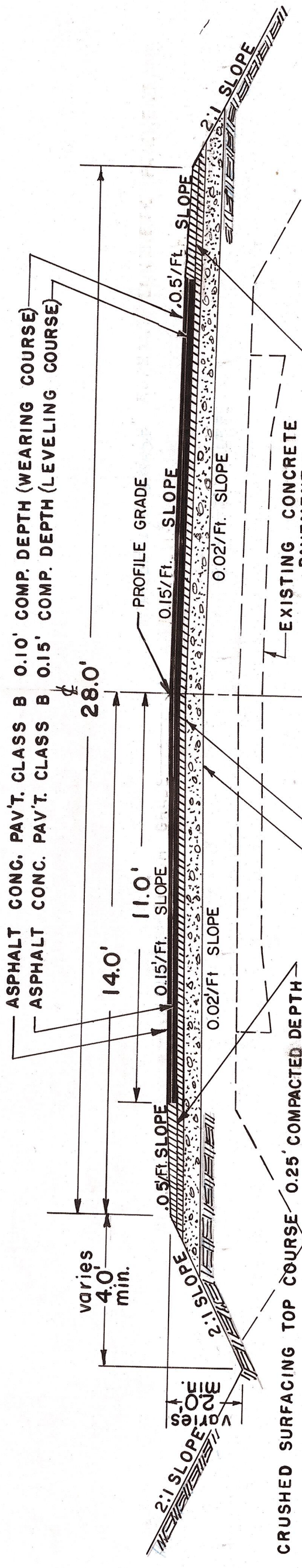


TYPICAL SECTION OF INTERSECTION X-X
SCALE 1" = 3'



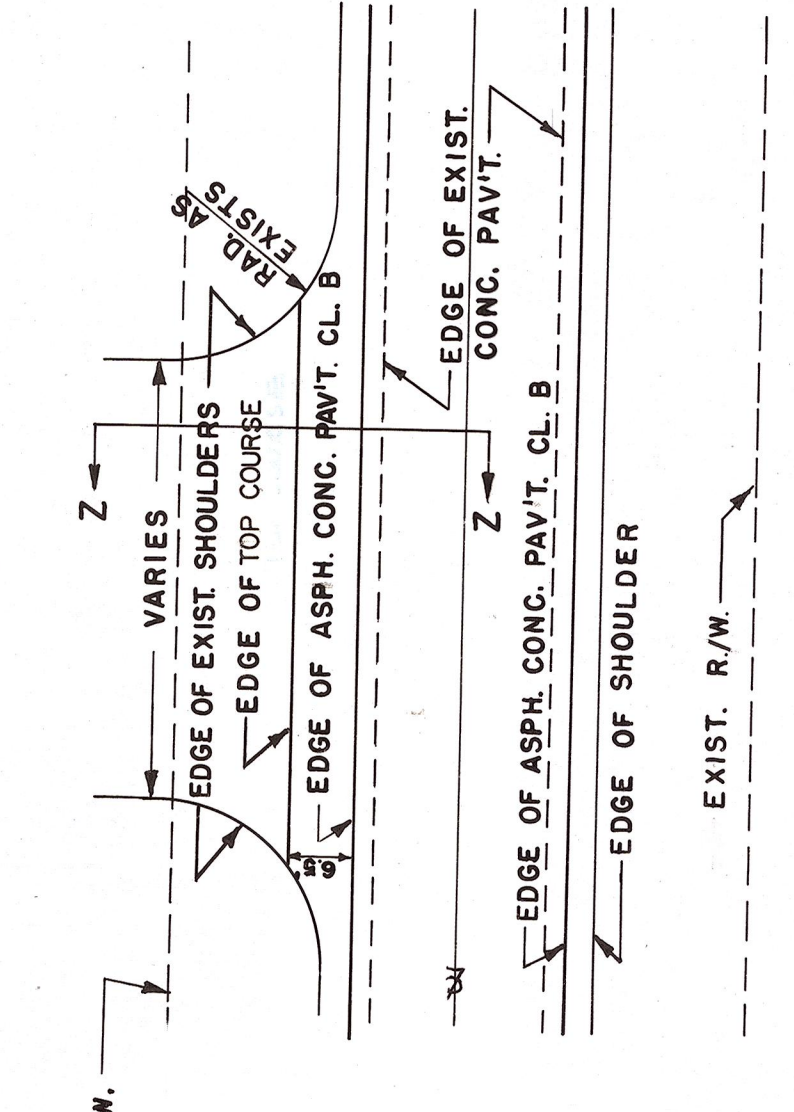
ROADWAY SECTION A
STA. 69+94 TO STA. 277+50 & STA. 289+00 TO STA. 328+50.8
SCALE 1" = 3'

22' ASPHALT CONC. PAV'T. CLASS B

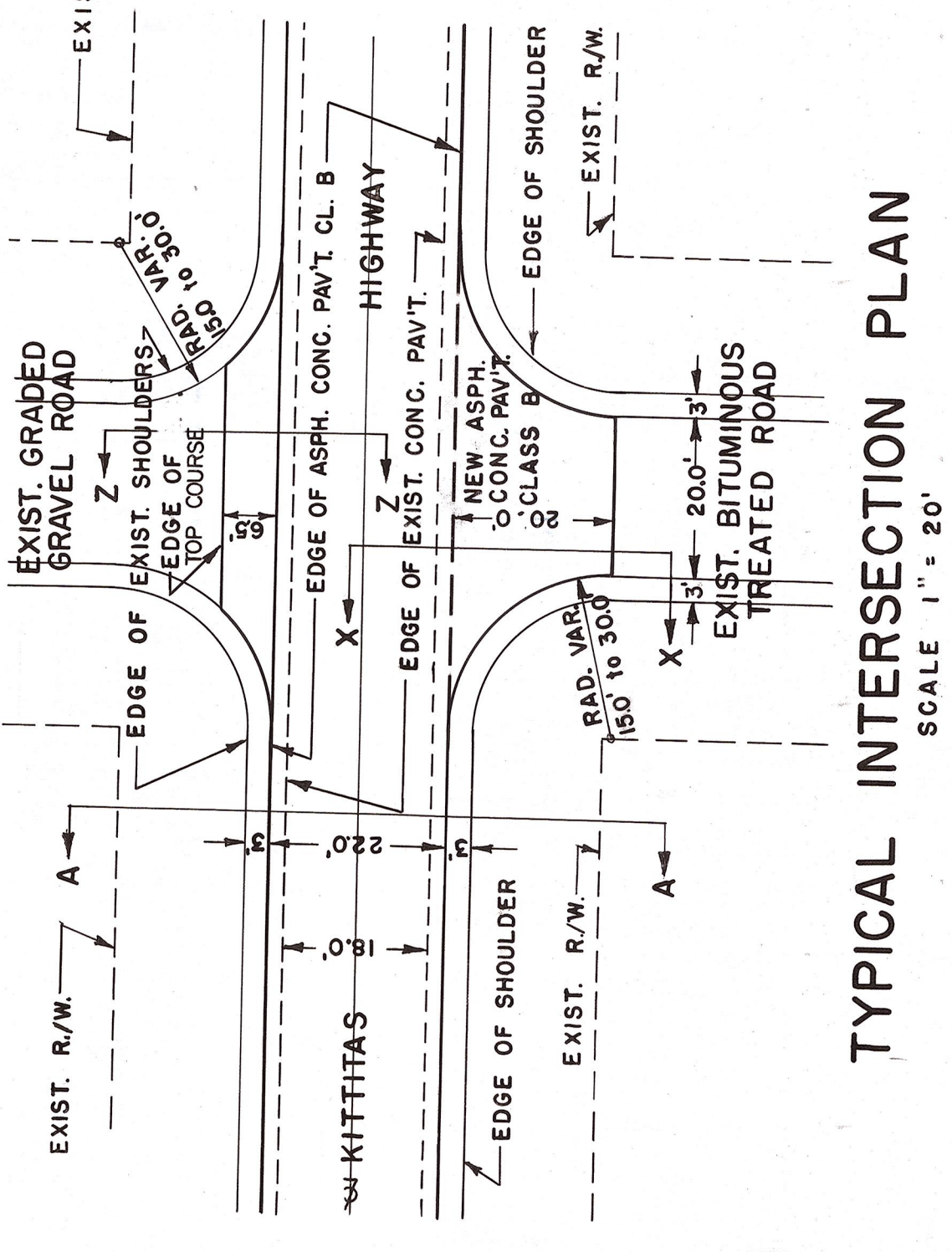


ROADWAY SECTION B
STA. 277+50 TO STA. 282+97.68 & STA. 283+26.32 TO STA. 289+00
SCALE 1" = 3'

22' ASPHALT CONC. PAV'T. CLASS B



TYPICAL APPROACH PLAN
SCALE 1" = 20'



TYPICAL INTERSECTION PLAN
SCALE 1" = 20'

OFFICE OF COUNTY ROAD ENGINEER
CRP 3-63
KITTITAS COUNTY
ELLENSBURG, WASHINGTON
KITTITAS HIGHWAY
S. WILLOW ST. TO W.C.L. KITTITAS
SCALE: H AS SHOWN F.A.S. - 0272(1)
DRAWN BY MFG
APPROVED: June 5, 1963 DATE
COUNTY ROAD ENGINEER
SHEET 2 OF 8

