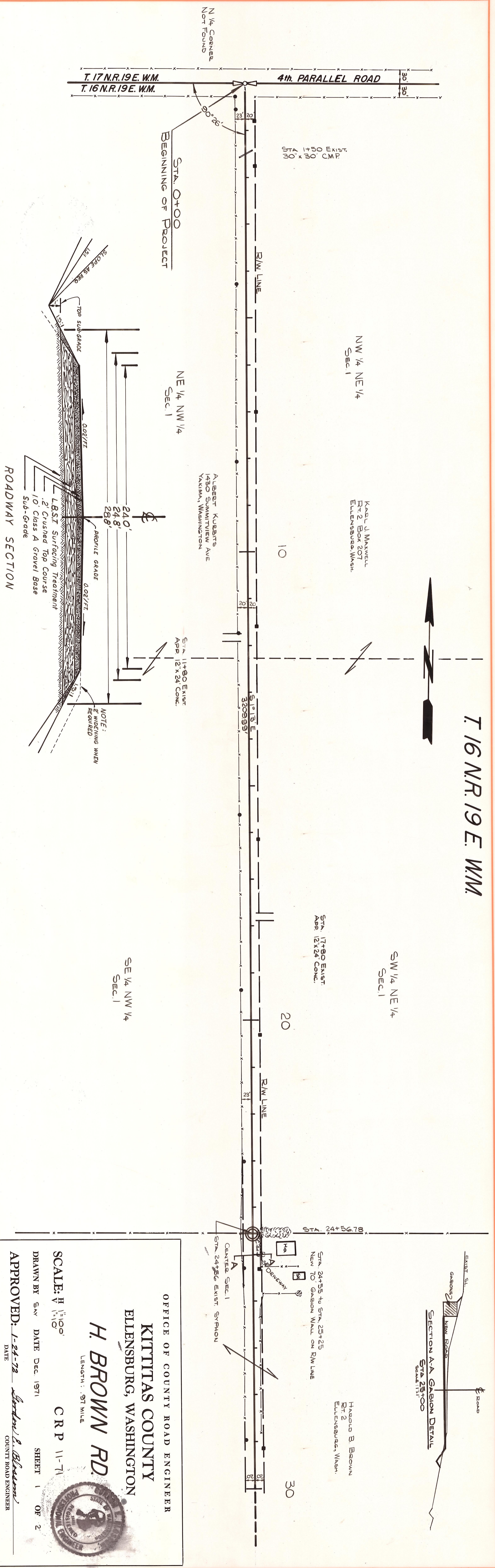
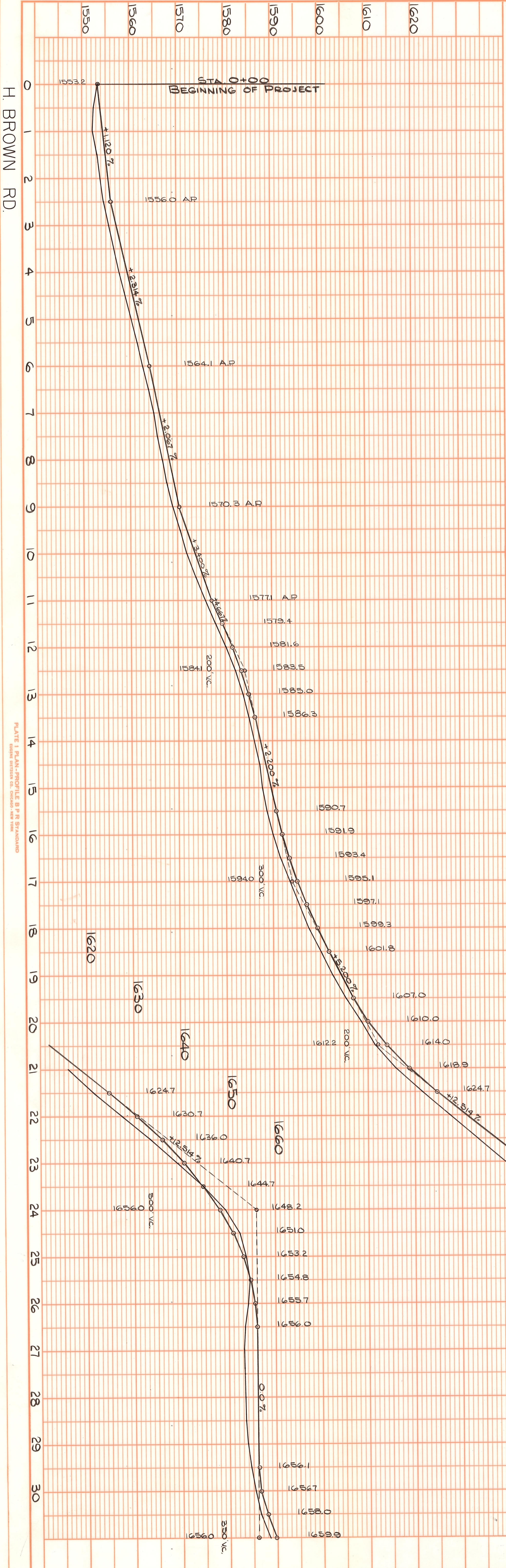


| | | | |
|----------------|-----------------------------|----|------|
| PROFILE | SURVEYED | BY | DATE |
| NOTE BOOK | PLOTTED | | |
| | GRADES CHECKED | | |
| | B. M.'S. NOTED | | |
| | STRUCTURE NOTATIONS CHECKED | | |

| | | | |
|-------------|--------------------|----|------|
| PLAN | SURVEYED | BY | DATE |
| NOTE BOOK | PLOTTED | | |
| | ALIGNMENT CHECKED | | |
| | RT. OF WAY CHECKED | | |



T. 16 N.R. 19 E. W.M.

SECTION A-A GABION DETAIL
STA 25+00
SCALE 1/4" = 1'-0"

OFFICE OF COUNTY ROAD ENGINEER
KITITAS COUNTY
ELENSBURG, WASHINGTON

H. BROWN RD.
LENGTH: .97 MILE

SCALE: H 1/100'
V 1/100'

DRAWN BY S.W. DATE Dec 1971 SHEET 1 OF 2

APPROVED: 1-24-72 *Stanley E. Blawie*
DATE COUNTY ROAD ENGINEER



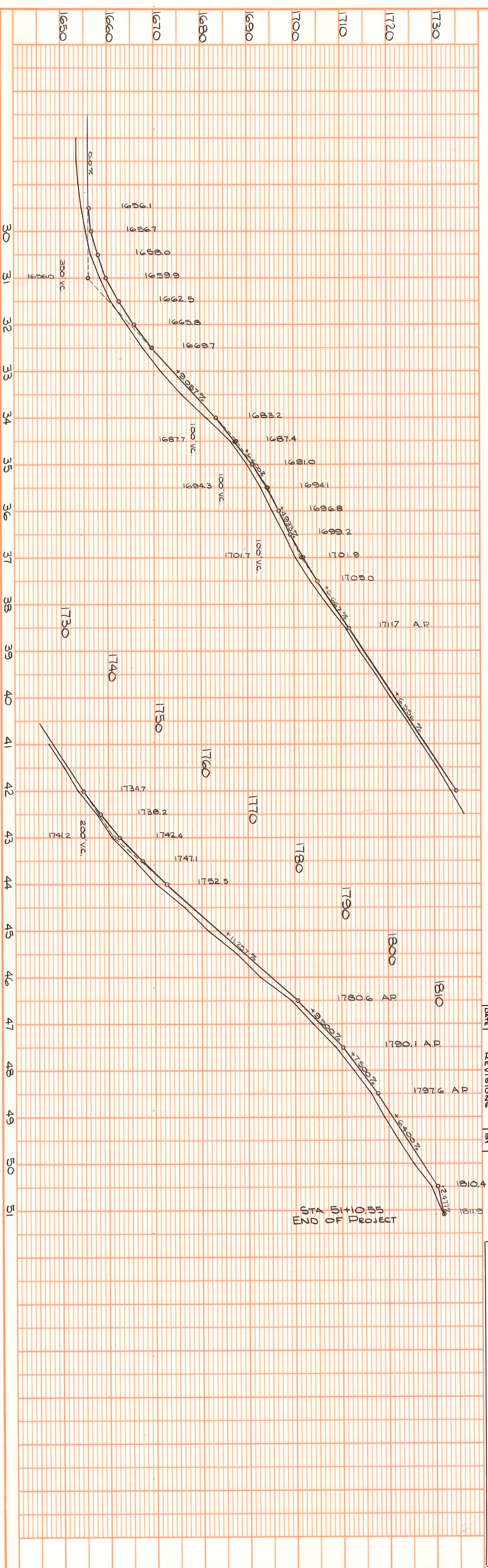
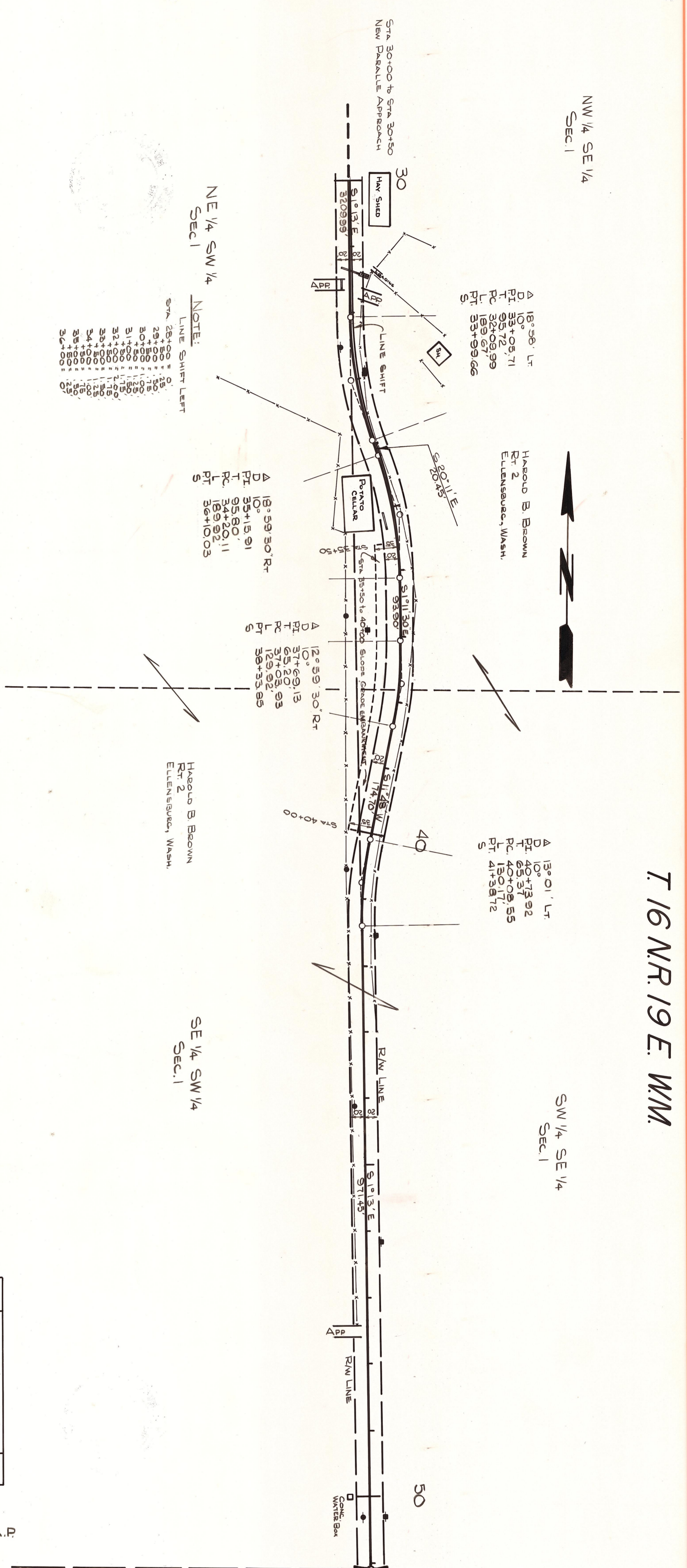
H. BROWN RD.

14-26

PLATE 1 PLAN, PROFILE & P&R STANDARDS
MOUNTED BY THE STATE OF WASHINGTON

| | | | |
|-----------|--------------------|----|------|
| PLAN | SURVEYED | BY | DATE |
| NOTE BOOK | PLOTTED | | |
| No. | ALIGNMENT CHECKED | | |
| | RT. OF WAY CHECKED | | |

| | | | |
|-----------|-----------------------------|----|------|
| PROFILE | SURVEYED | BY | DATE |
| NOTE BOOK | PLOTTED | | |
| No. | GRADES CHECKED | | |
| | S. M.'s NOTED | | |
| | STRUCTURE NOTATIONS CHECKED | | |



| DATE | REVISIONS | BY |
|---------|---------------------------|-----|
| 1-24-72 | LINE SHIFT 25+00 TO 34+00 | SAV |

OFFICE OF COUNTY ROAD ENGINEER
 KITTITAS COUNTY
 ELLENSBURG, WASHINGTON

H. BROWN RD.
 LENGTH: .571 MILE

SCALE: H 1"=100'
 V 1"=10'

DRAWN BY SAV DATE DEC 1971 SHEET 2 OF 2

APPROVED: 1-24-72 *Richard L. Johnson*
 COUNTY ROAD ENGINEER



H. BROWN RD.

14-26A

PLATE 1 PLAN, PROFILE & P & S STANDARD
 DRAWN BY SAV DATE DEC 1971