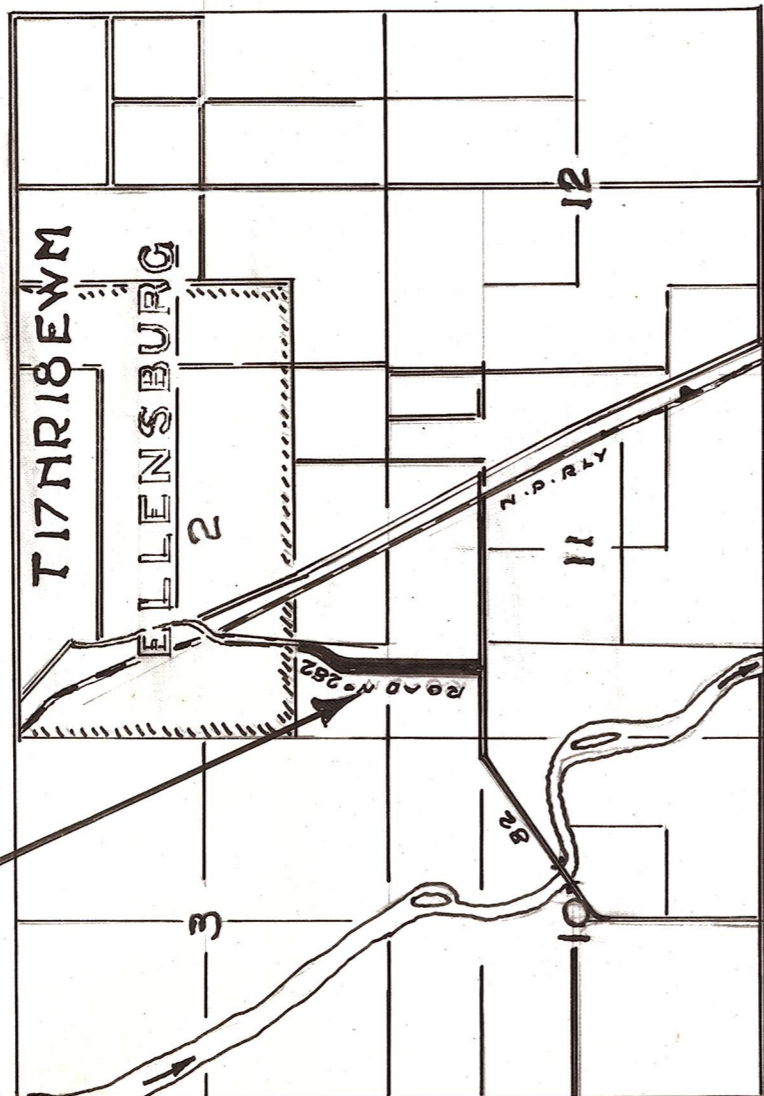
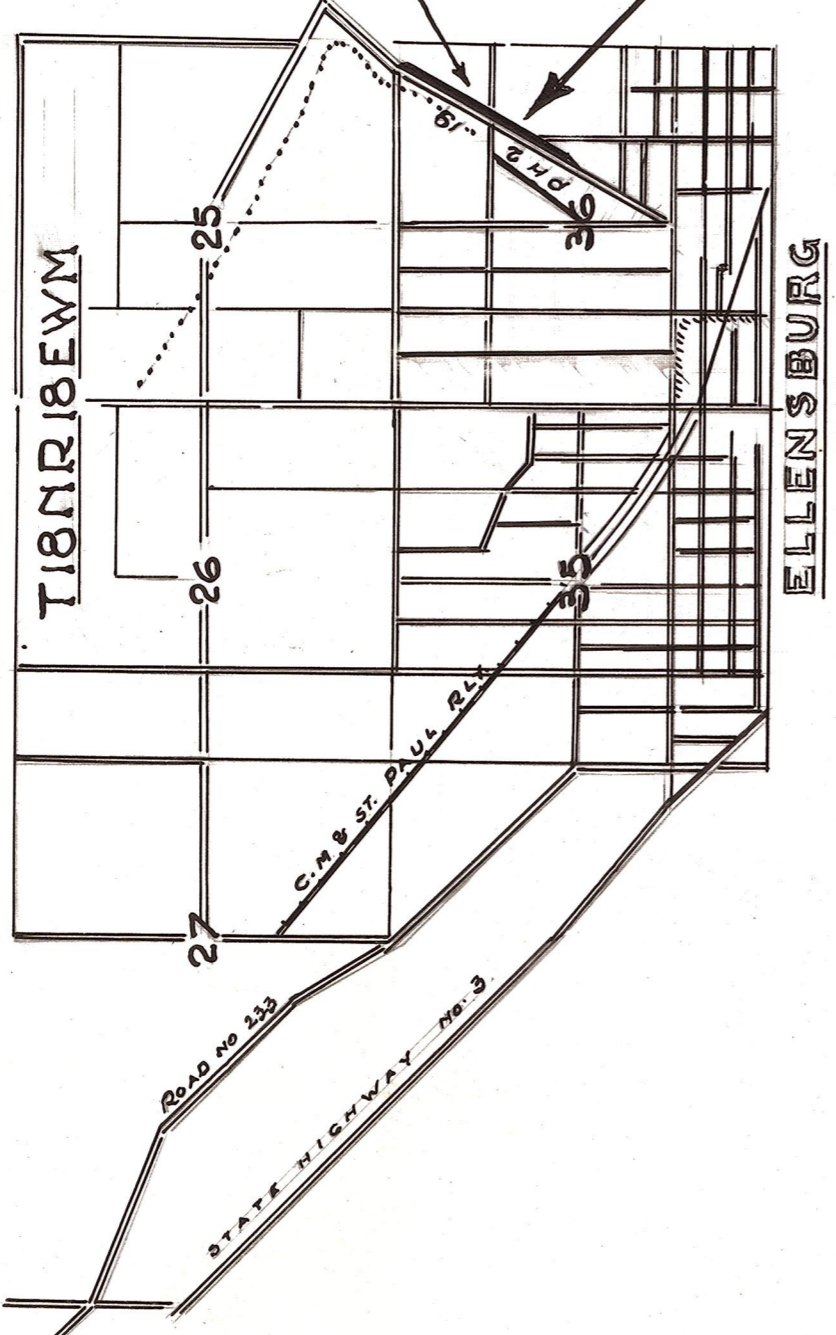


TYPICAL SECTION

SECTION 4 RD. N° 282

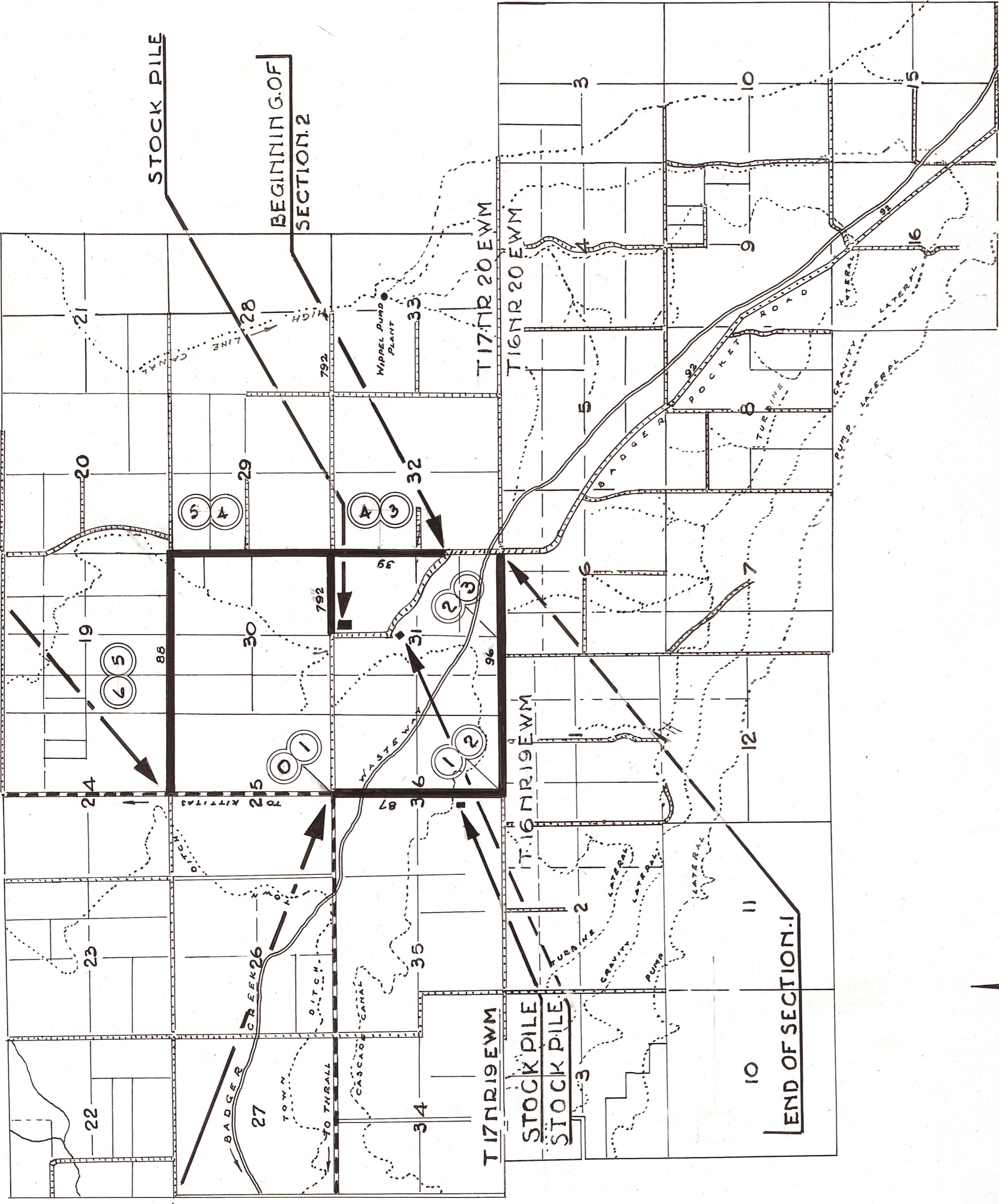


BEGINNING OF PROJECT
MILE POST 0.00
BEGINNING OF SECTION 1



SECTION 3 RD. N° 19

END OF SECTION 2
MILE POST 6.25



SECTION 1, 2, 3 AND 4
7.25 MILES

MILE	PREPARATION AND FINISHING ROADWAY MILES	MINERAL AGGREGATE IN PLACE FROM STOCK PILE CU. YDS.	M.C.2 ROAD OIL TONS	WATER IN PLACE M. GAL.
1	1.00	600	35.00	40.00
2	1.00	600	35.00	40.00
3	1.00	600	35.00	40.00
4	1.00	600	35.00	40.00
5	1.00	600	35.00	40.00
6	1.00	600	35.00	40.00
7 PART	.25	150	8.75	10.00
P.H.2	.50	150	8.75	20.00
RN° 282	.50	300	18.50	20.00
TOTALS	7.25	4200	246.00	290.00

FURNISHED BY W.P.A. 225 TONS M.C.2 ROAD OIL

KITTITAS COUNTY
STATE OF WASHINGTON
COUNTY ROAD PROJECT N° 2-8-A

SCALE TWO INCHES = 1 MILE

APPROVED *[Signature]* COUNTY ROAD ENGR.

COUNTY COMMISSIONERS

SHEET OF SHEETS