

5-2-91  
~~4-1-21~~

Scottish Northern States Land  
and Development Co.

MAP SHOWING  
PROPOSED CHANGE IN HIGHWAY  
IN

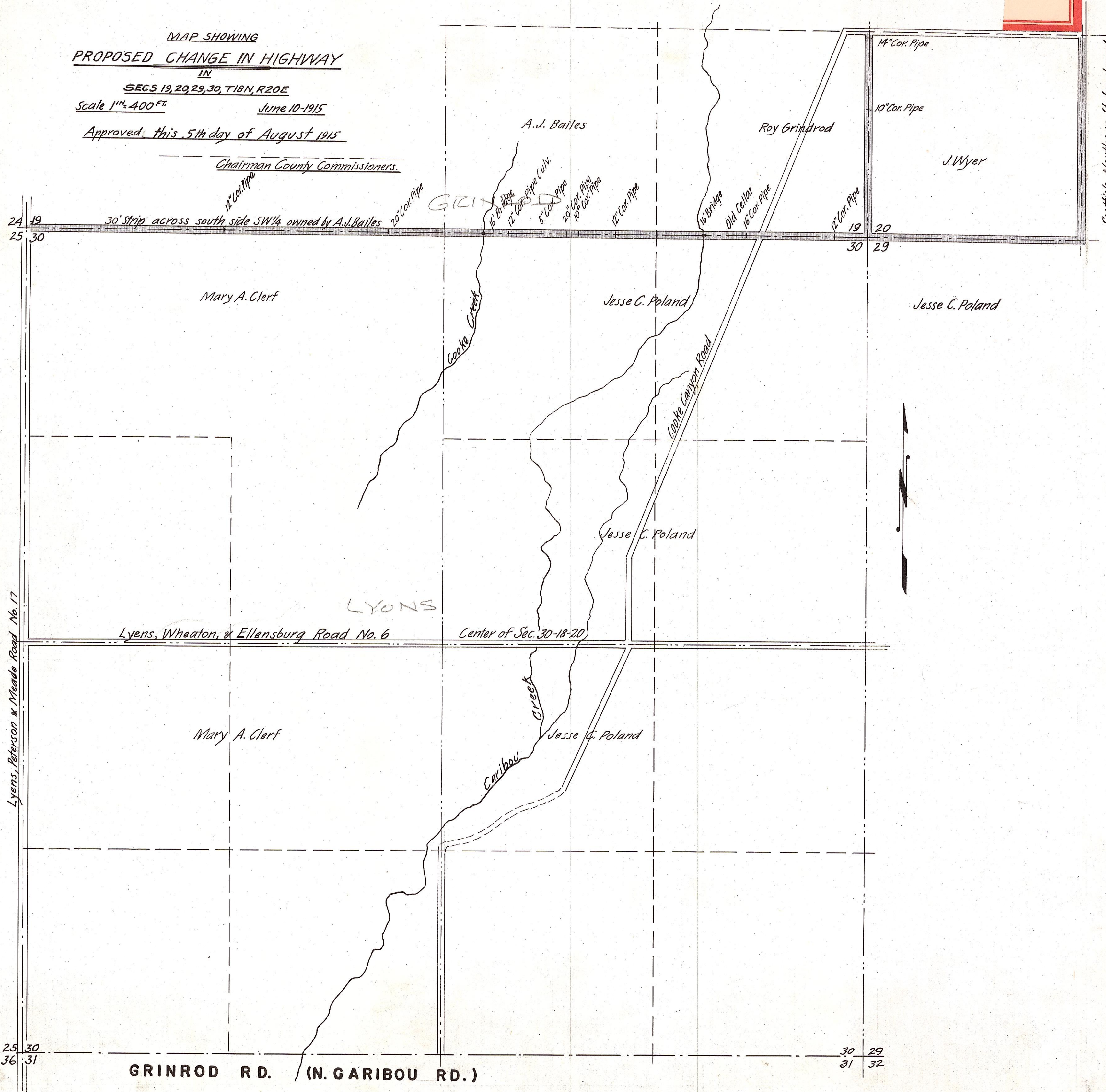
SECS 19, 20, 29, 30, T18N, R20E

Scale 1" = 400 FT.

June 10-1915

Approved this 5th day of August 1915

Chairman County Commissioners.



GRINROD RD. (N. GARIBOU RD.)

Lyens, Peterson & Meade Road No. 17

Lyens, Wheaton, & Ellensburg Road No. 6  
Center of Sec. 30-18-20

LYONS

17-20

3-8-1