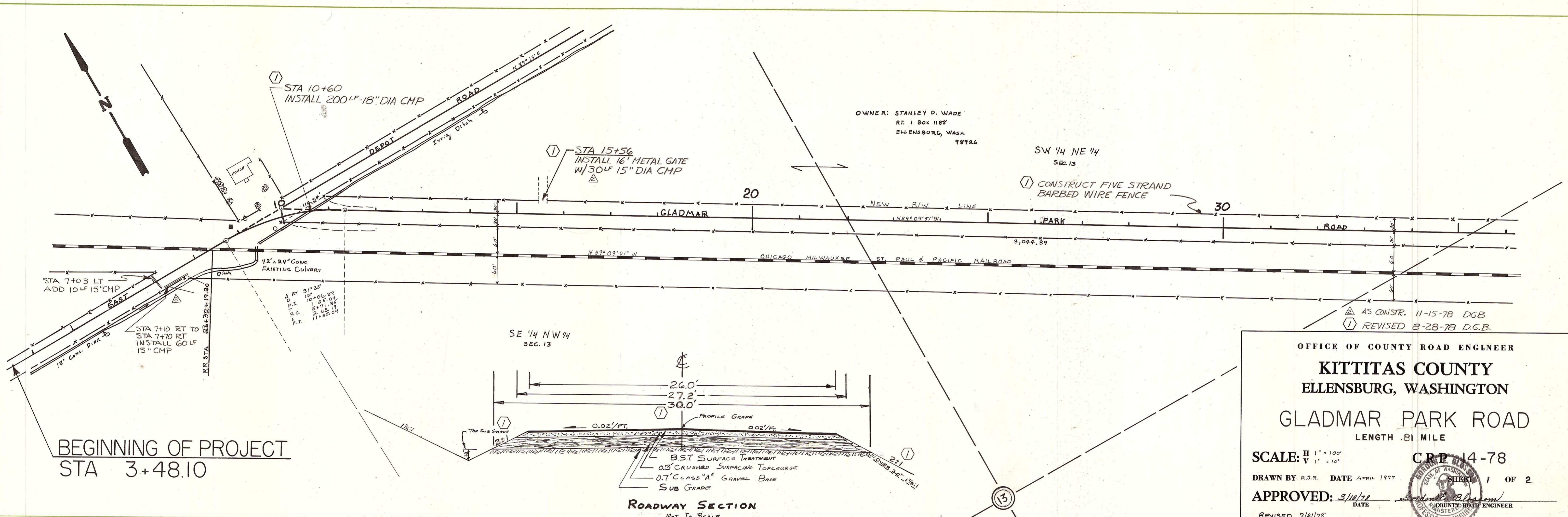
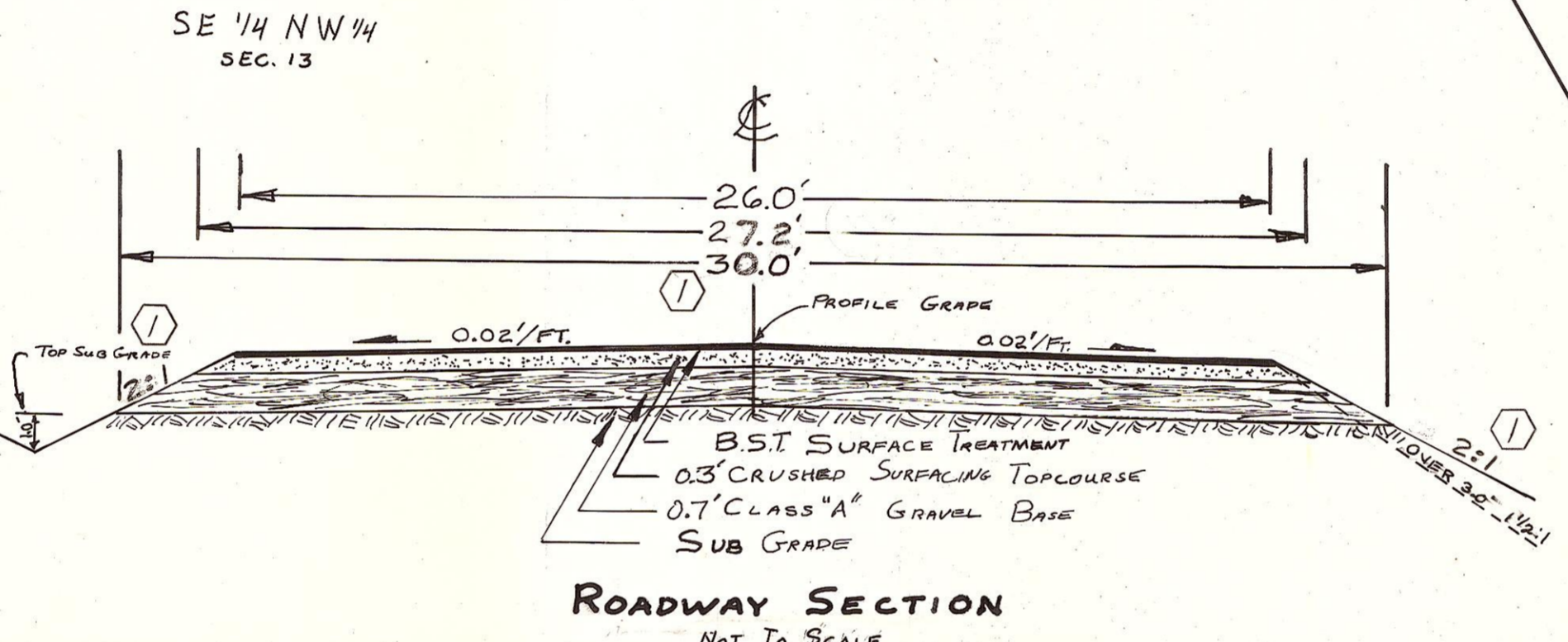


DATE  
BY  
SURVIVED  
PLOTTED  
NOTE BOOK  
NO.

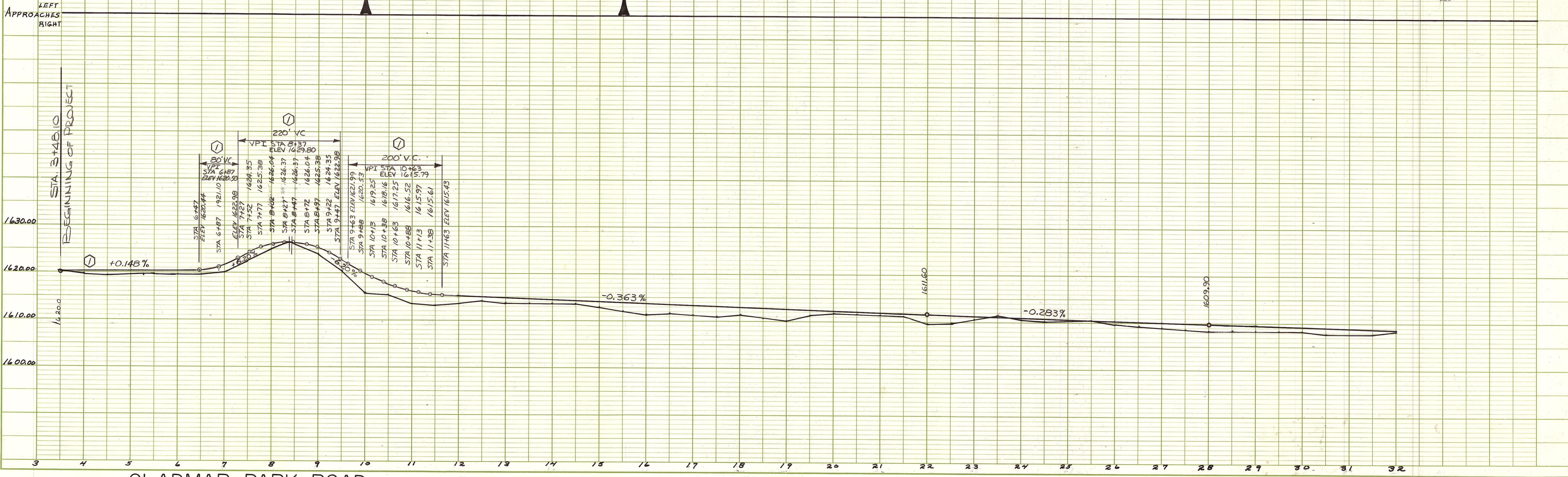
DATE  
BY  
SURVIVED  
PLOTTED  
NOTE BOOK  
NO.



BEGINNING OF PROJECT  
STA 3+48.10



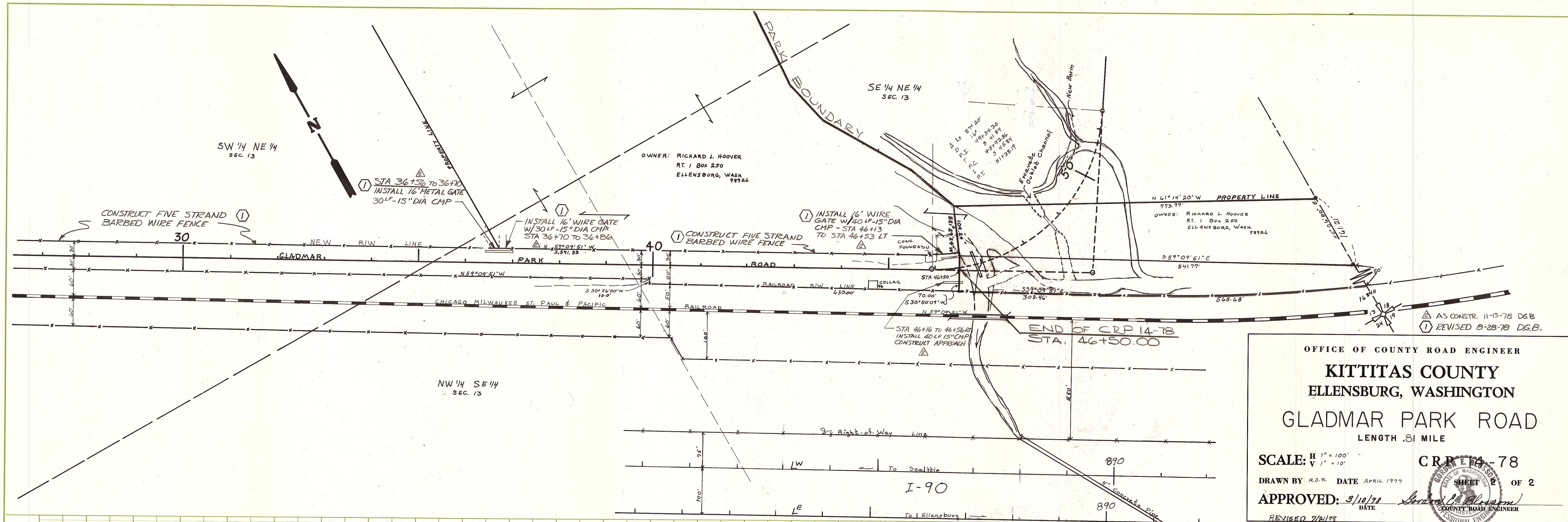
OFFICE OF COUNTY ROAD ENGINEER  
**KITTITAS COUNTY**  
 ELLENSBURG, WASHINGTON  
**GLADMAR PARK ROAD**  
 LENGTH .81 MILE  
 SCALE:  $\frac{H}{V} = \frac{1''}{100'}$   
 DRAWN BY R.S.R. DATE APRIL 1977  
 APPROVED: *[Signature]* DATE  
 REVISED 7/11/78  
 CRP 14-78  
 SHEET 1 OF 2  
 COUNTY ROAD ENGINEER



GLADMAR PARK ROAD

DATE  
BY  
SURVEYED  
NOTED  
NOTE BOOK  
ALIGNED CHECKED  
REVISIONS CHECKED  
No.

DATE  
BY  
SURVEYED  
NOTED  
NOTE BOOK  
E. & S. NOTES  
REVISIONS CHECKED  
No.



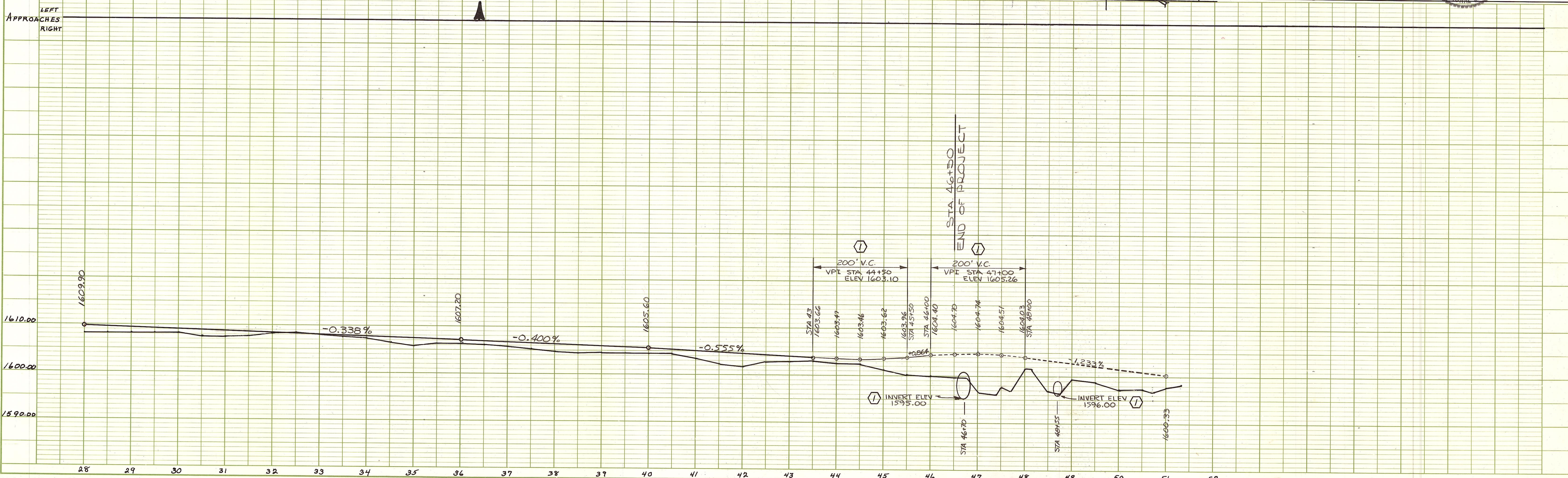
OFFICE OF COUNTY ROAD ENGINEER  
**KITTITAS COUNTY**  
 ELLENSBURG, WASHINGTON  
**GLADMAR PARK ROAD**  
 LENGTH .81 MILE

SCALE: H 1" = 100'  
 V 1" = 10'

DRAWN BY R.S.R. DATE APRIL 1977  
 APPROVED: 3/10/78 DATE  
 REVISED 7/2/78

CR RE 64-78  
 SHEET 2 OF 2

AS CONSTR. 11-15-78 D.G.B.  
 REVISED 8-28-78 D.G.B.



GLADMAR PARK ROAD