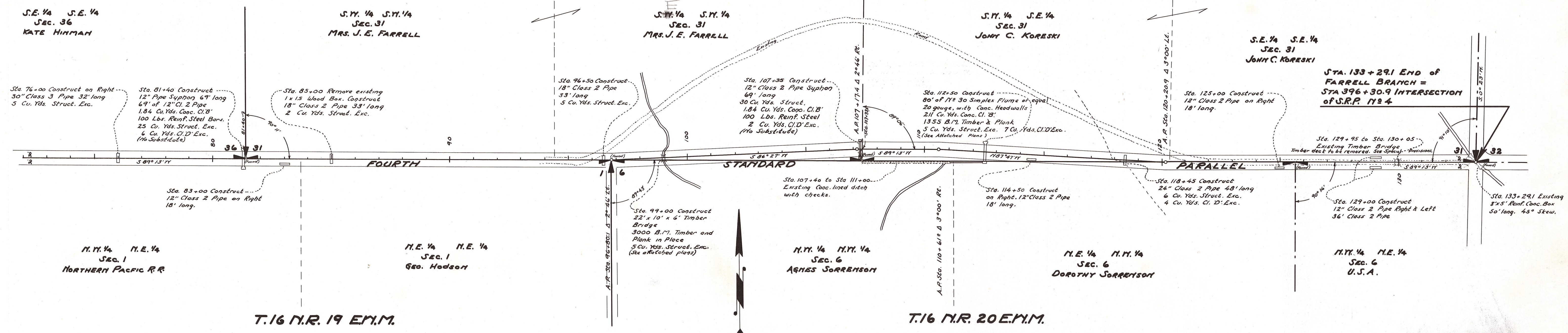


T. 17 N.R. 19 E.W.M.

T. 17 N.R. 19 E.W.M.



STA. 133+29.1 END OF FARRELL BRANCH = STA. 396+30.9 INTERSECTION OF S.R.R. 1734

MAP AND PROFILE

SECONDARY ROAD PROJECT 1734  
KITITAS COUNTY

APPROVED:  
SCALE: HORIZ. ONE IN. = 200 FT. VERT. ONE IN. = 50 FT.  
SHEET 4 OF 6 SHEETS

