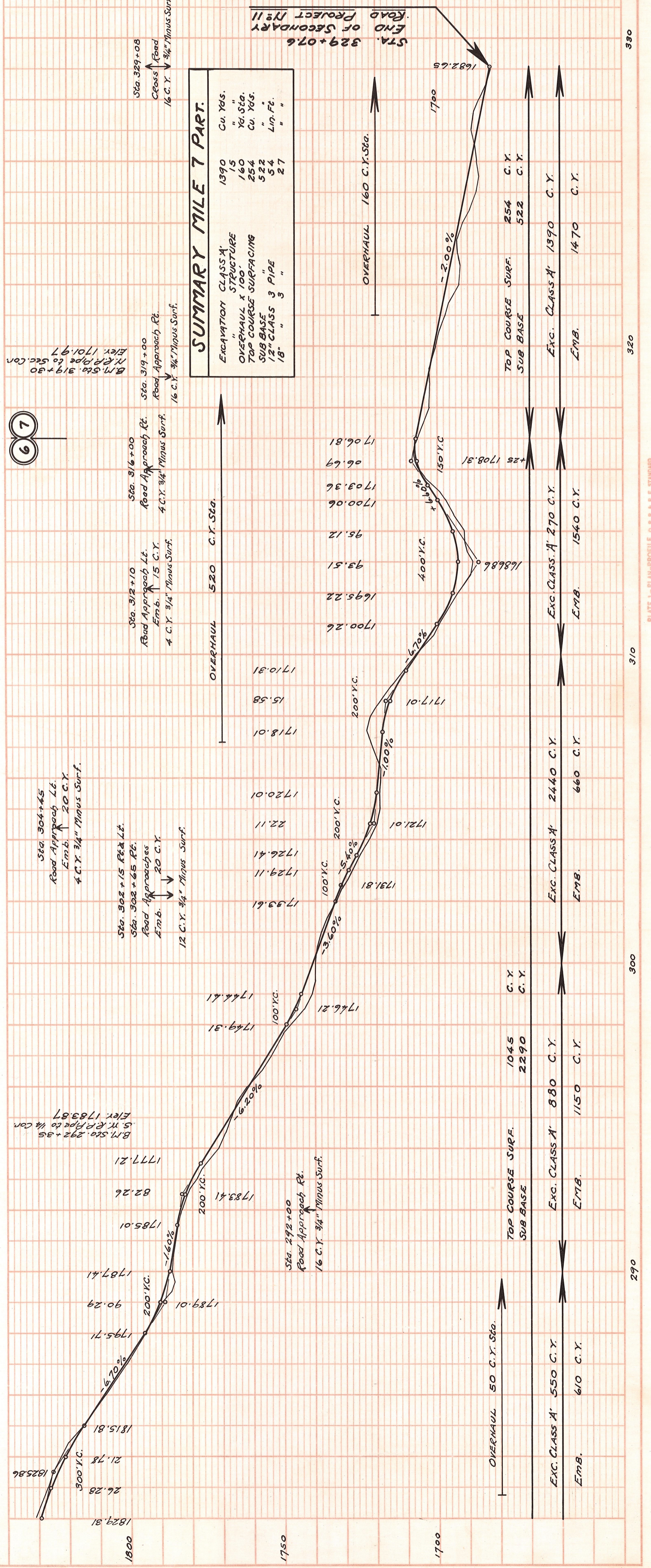
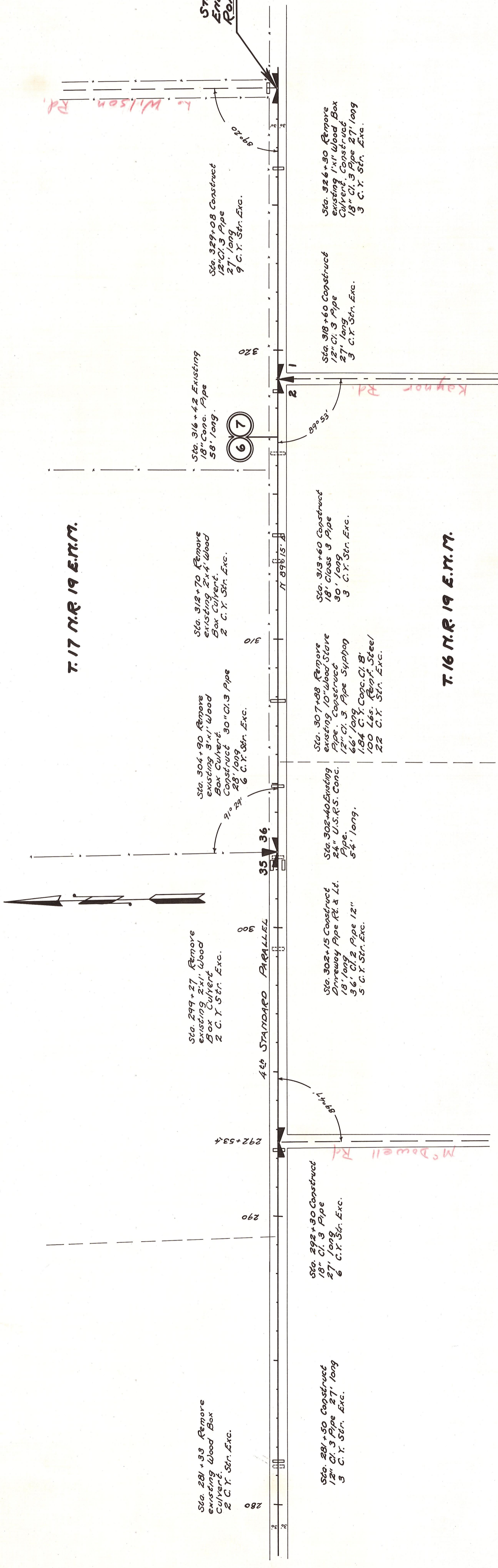


T. 17 N. R. 19 E. N. 11.

T. 16 N. R. 19 E. N. 11.

MAP AND PROFILE  
SECONDARY ROAD PROJECT No. 11  
KITITITAS COUNTY

APPROVED:  
SCALE: HORIZ. ONE IN. = 200 FT. VERT. ONE IN. = 10 FT.  
SHEET 3 OF 3 SHEETS



PLAN SURVEYED BY DATE  
PLOTTED BY DATE  
NOTE BOOK ALIGNED CHECKED BY DATE  
NOTE BOOK CHECKED BY DATE

PROFILE SURVEYED BY DATE  
PLOTTED BY DATE  
STRUCTURE NOTED BY DATE