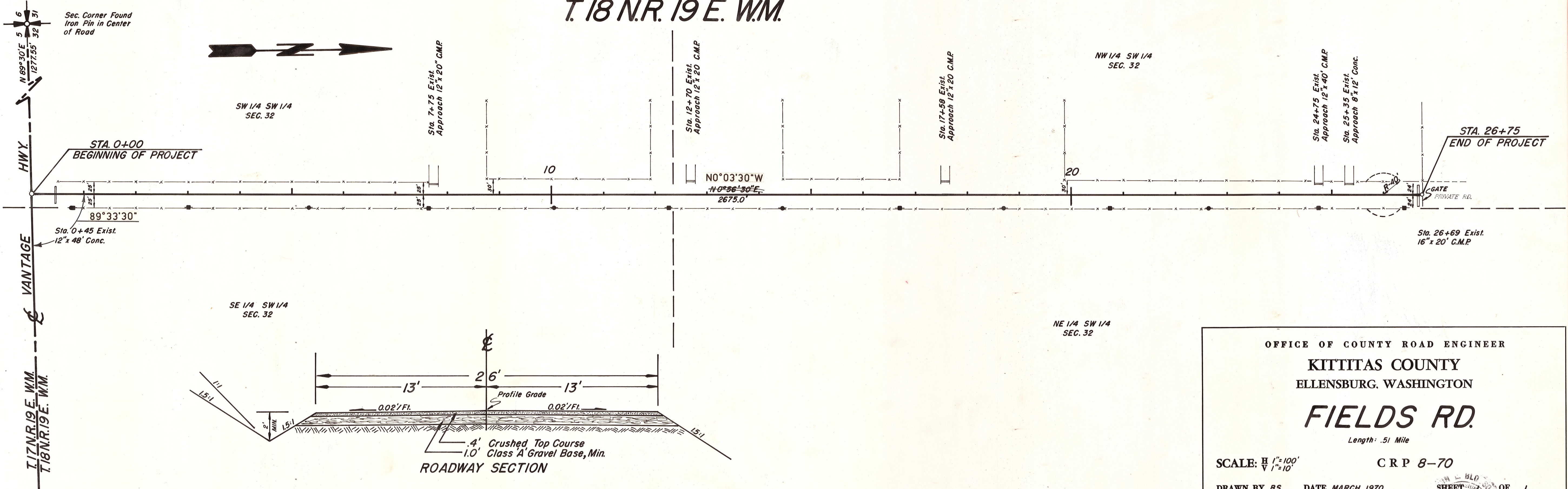


T. 18 N.R. 19 E. W.M.



OFFICE OF COUNTY ROAD ENGINEER
 KITTITAS COUNTY
 ELLENSBURG, WASHINGTON

FIELDS RD.

Length: .51 Mile

SCALE: $\frac{H}{V} = \frac{1''}{100'}$
 $\frac{V}{V} = \frac{1''}{10'}$

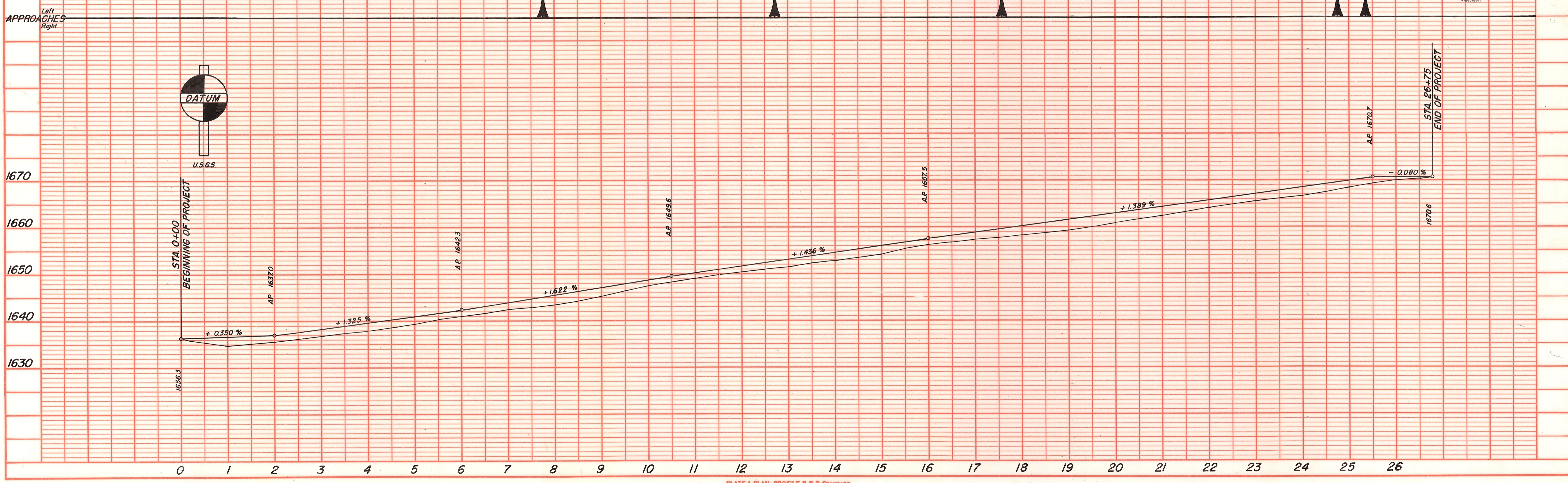
CRP 8-70

DRAWN BY BS. DATE MARCH, 1970

APPROVED: 4-23-70
 DATE

SHEET 1 OF 1
 COUNTY ROAD ENGINEER
 REGISTERED PROFESSIONAL ENGINEER

10/86	Added angle and changed bearing on Fields Rd.	Say
DATE	REVISION	BY



PLAN

DATE	
BY	
DESIGNED	
PLOTTED	
CHECKED	
NOTE BOOK	
NO.	

PROFILE

DATE	
BY	
DESIGNED	
PLOTTED	
CHECKED	
NOTE BOOK	
NO.	