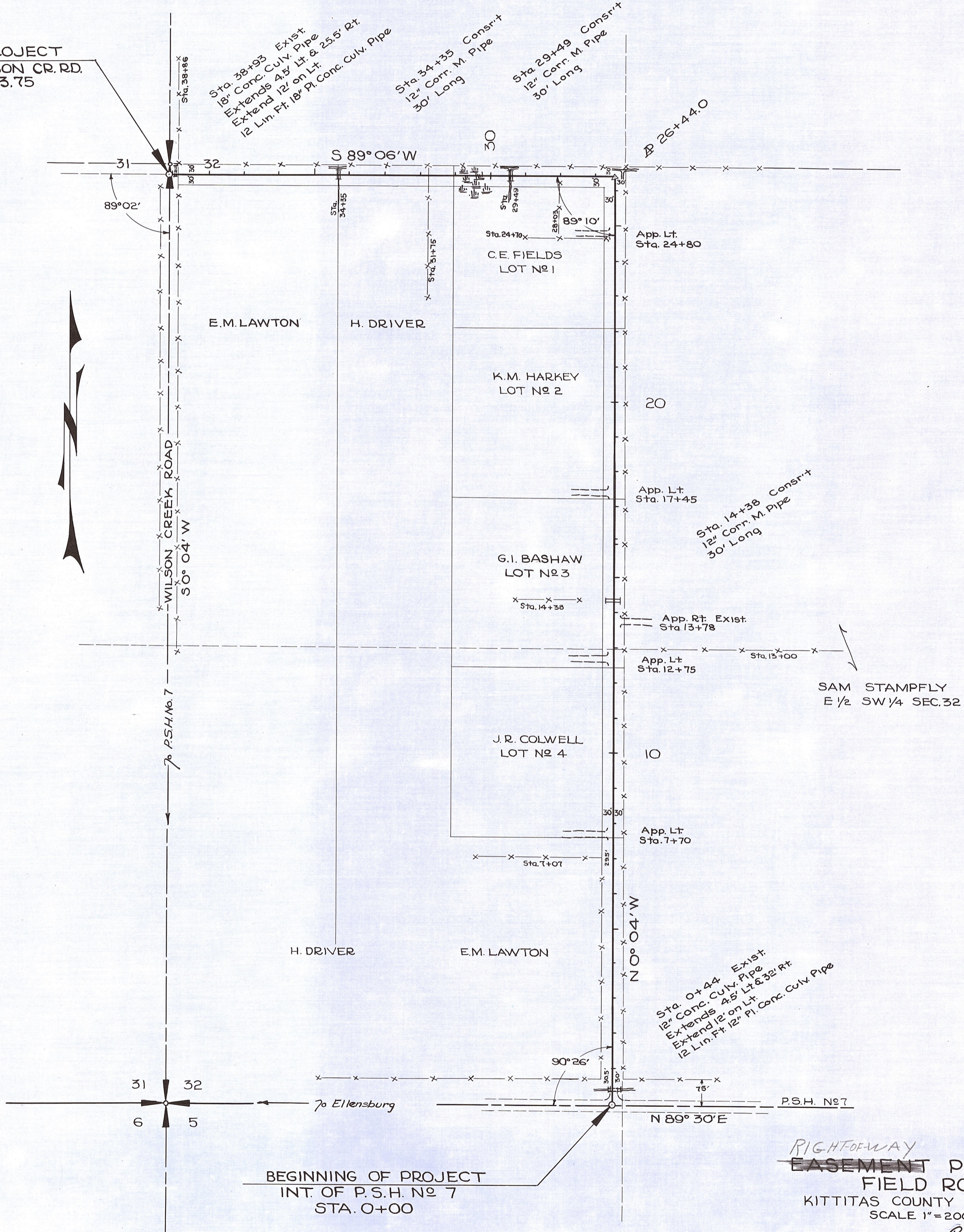


2-2-91
K. J. J.

T. 18 N. R. 19 E. W.M.

END OF PROJECT
INT. OF WILSON CR. RD.
STA. 39+13.75



BEGINNING OF PROJECT
INT. OF P.S.H. No 7
STA. 0+00

RIGHT-OF-WAY
EASEMENT PLAT FOR
FIELD ROAD
KITITAS COUNTY HIWAY DEPT
SCALE 1" = 200'

Rowland M. Jones
COUNTY ROAD ENGINEER

APPROVED *oct 12*, 1948

Fields Road
11-16-48
CHAIRMAN, BOARD OF COUNTY COMM'S